

03-07-2025 LETTING ITEM 185

**INDEX OF SHEETS**

- 1 COVER SHEET
- 2 LIST OF STANDARDS, GENERAL NOTES & LEGEND
- 3 SUMMARY OF QUANTITIES
- 4-5 TYPICAL SECTIONS
- 6 SUPERELEVATION DETAILS
- 7 SCHEDULES OF QUANTITIES
- 8 TIE POINTS
- 9 PLAN & PROFILES
- 10 RIGHT OF WAY PLAT
- 11 EROSION CONTROL PLANS
- 12 PAVEMENT MARKING PLAN
- 13 SPECIAL DETAILS
- 14-17 CROSS SECTIONS

**ELECTRIC**

COMMONWEALTH EDISON  
KURT ARMSTRONG  
3 LINCOLN CENTER  
OAKBROOK TERRACE, IL 60181  
(779) 231-3174

**TELEPHONE**

FRONTIER COMMUNICATION  
PAULO JAVIER  
112 WEST ELM STREET  
SYCAMORE, IL 60178

STATE OF ILLINOIS  
DEPARTMENT OF TRANSPORTATION  
**PLANS FOR PROPOSED  
FEDERAL AID HIGHWAY**

INTERSECTION SAFETY IMPROVEMENT  
HSIP (FY24)

CH 5 / FAS 95 (GLIDDEN ROAD) & TR 61 (BASE LINE ROAD)

SECTION 20-00272-00-SP

PROJECT 4WAK(615)

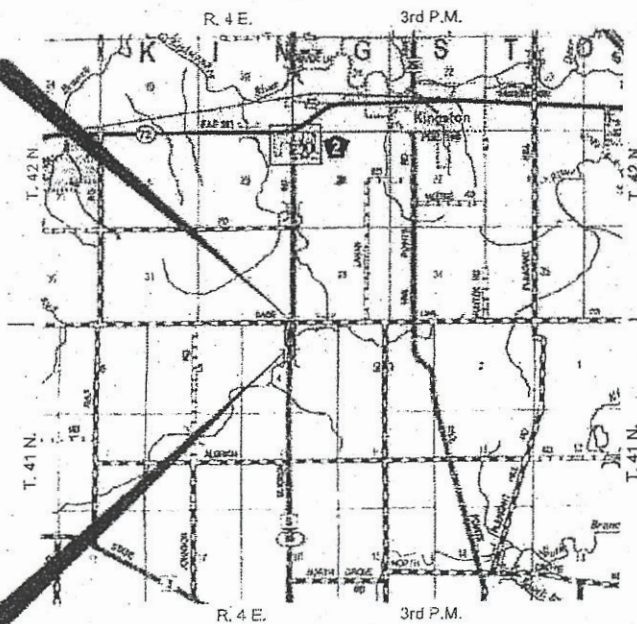
DEKALB COUNTY

C-93-110-24

ROUTE NO.	SECTION	COUNTY	TOTAL SHEETS	SHEET NO.
CH 5	20-00272-00-SP	DEKALB	17	1
FED. ROAD DIST. NO. 7		ILLINOIS	CONTRACT NO. 87866	

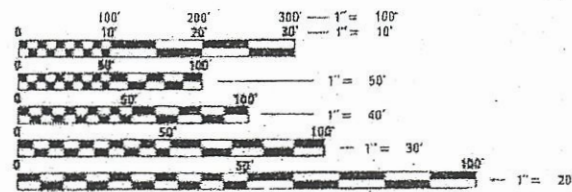


END IMPROVEMENT  
CH 5 (GLIDDEN RD)  
STA 100 + 35.00



BEGIN IMPROVEMENT  
CH 5 (GLIDDEN RD)  
STA 93 + 20.03

CH 5 (GLIDDEN RD) GROSS LENGTH = 714.97 FT = 0.135 MILES  
CH 5 (GLIDDEN RD) NET LENGTH = 655.60 FT = 0.124 MILES



FULL SIZE PLANS HAVE BEEN PREPARED USING STANDARD ENGINEERING SCALES. REDUCED SIZED PLANS WILL NOT CONFORM TO STANDARD SCALES. IN MAKING MEASUREMENTS ON REDUCED PLANS, THE ABOVE SCALES MAY BE USED.

J.U.L.I.E.  
JOINT UTILITY LOCATION INFORMATION FOR EXCAVATION  
1-800-892-0123  
OR 811

LOCATION MAP  
NOT TO SCALE

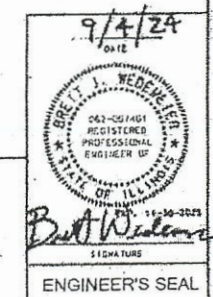
DESIGN CLASSIFICATION:  
CH 5 (GLIDDEN RD) - MAJOR COLLECTOR  
CURRENT ADT:  
CH 5 (GLIDDEN RD) - 3,550 (2021)  
DESIGN ADT:  
CH 5 (GLIDDEN RD) - 4,800 (2043)  
DESIGN SPEED:  
CH 5 (GLIDDEN RD) - 55 MPH

APPROVED *September 4, 2024*  
DEKALB COUNTY ENGINEER

PASSED *September 6, 2024*  
DISTRICT THREE ENGINEER OF LOCAL ROADS & STREETS

RELEASED FOR BID BASED ON LIMITED REVIEW *September 6, 2024*  
*Julia Thompson*

PRINTED BY THE AUTHORITY OF THE STATE OF ILLINOIS



CONTRACT NO. 87866

**GENERAL NOTES**

THE SCALE SHOWN ON THE DRAWINGS APPLIES ONLY TO FULL SIZE PLANS AND NOT TO THE REDUCED SIZE PLANS.

ALL ELEVATIONS REFER TO U.S.G.S. MEAN SEA LEVEL DATUM.

THE LOCATIONS OF KNOWN UTILITIES AS SHOWN ON THE PLANS ARE APPROXIMATE AND DOES NOT GUARANTEE THEIR ACCURACY. THE CONTRACTOR SHALL VERIFY THE LOCATION OF THESE UTILITIES AND THE EXISTENCE AND LOCATION OF ANY UTILITY NOT SHOWN ON THE PLANS.

THE CONTRACTOR SHALL NOTIFY THE UTILITIES AT LEAST TEN (10) DAYS PRIOR TO ANY CONSTRUCTION IN THE AREA AND SHALL COMPLY WITH ALL RESTRICTIONS FOR EQUIPMENT MOVEMENTS AND CLEARANCES AS REGARDS TO THEIR FACILITIES.

BEFORE STARTING ANY EXCAVATION, THE CONTRACTOR MUST CALL J.U.L.I.E. AT 1-800-892-0123 FOR FIELD LOCATIONS OF BURIED ELECTRICAL, TELEPHONE, GAS FACILITIES, AND ALL PUBLIC UTILITIES. A 48 HOUR NOTIFICATION IS REQUIRED.

MEMBERS OF J.U.L.I.E. KNOWN TO BE WITHIN THE LIMITS OF THE IMPROVEMENT ARE:  
 1. COMED  
 2. FRONTIER COMMUNICATION

THE CONTRACTOR SHALL USE ALL NECESSARY PRECAUTIONS AND PROTECTIVE MEASURES REQUIRED TO MAINTAIN EXISTING UTILITIES, SEWER AND APPURTENANCES THAT MUST BE KEPT IN OPERATION. IN PARTICULAR, THE CONTRACTOR WILL TAKE ADEQUATE MEASURES TO PREVENT THE UNDERMINING OF UTILITIES AND SEWERS WHICH ARE STILL IN SERVICE.

IT IS THE CONTRACTOR'S RESPONSIBILITY TO VERIFY ALL DIMENSIONS AND CONDITIONS EXISTING IN THE FIELD PRIOR TO CONSTRUCTION AND ORDERING MATERIALS.

THE CONTRACTOR SHALL BE REQUIRED TO PROVIDE ACCESS TO ABUTTING PROPERTIES AT ALL TIMES DURING CONSTRUCTION OF THE PROJECT.

IF ANY LOOSE MATERIAL IS DEPOSITED DURING CONSTRUCTION OPERATIONS IN THE FLOW LINE OF DITCHES, GUTTERS OR DRAINAGE STRUCTURES SO THAT IT RESTRICTS THE NATURAL FLOW OF WATER, IT SHALL BE REMOVED AT THE CLOSE OF EACH WORKING DAY. AT THE CONCLUSION OF CONSTRUCTION OPERATIONS, ALL DRAINAGE STRUCTURES SO AFFECTED SHALL BE FREE FROM ALL DEBRIS. THIS WORK SHALL BE CONSIDERED INCLUDED IN THE COST OF THIS CONTRACT.

ALL FRAMES, GRATES, SIGNS, FENCES AND DELINEATORS, NEW OR EXISTING, DAMAGED BY THE CONTRACTOR DURING CONSTRUCTION SHALL BE REPLACED BY THE CONTRACTOR AT HIS EXPENSE.

EXISTING PAVEMENT, SIDEWALK, DRIVEWAY PAVEMENT, CURB AND GUTTER AND EXISTING DRAINAGE STRUCTURES NOT INCLUDED IN THE PLANS FOR REMOVAL, BUT DAMAGED DUE TO THE CONTRACTOR'S OPERATIONS SHALL BE REPLACED AT THE EXPENSE OF THE CONTRACTOR.

TRAFFIC SIGNS REMOVED MUST BE RESET AT THEIR PERMANENT LOCATIONS IN A WORKMANLIKE MANNER AND BE VISIBLE TO TRAFFIC ON THE ROADWAY AS DIRECTED BY THE ENGINEER. THESE SIGNS SHALL BE RESET BEFORE THE ROADWAY IS OPEN TO TRAFFIC. COST OF SUCH WORK SHALL BE CONSIDERED INCLUDED IN THE COST OF THE CONTRACT.

NO WORK SHALL COMMENCE UNTIL TRAFFIC CONTROL REQUIREMENTS ARE MET.

THE THICKNESS OF HOT-MIX ASPHALT SHOWN ON THE PLANS IS THE NOMINAL THICKNESS. DEVIATIONS FROM THE NOMINAL THICKNESS WILL BE PERMITTED WHEN SUCH DEVIATIONS OCCUR DUE TO IRREGULARITIES IN THE EXISTING SURFACE OR BASE ON WHICH THE HOT-MIX ASPHALT IS PLACED.

ALL EMBANKMENTS AND SUB-GRADE SHALL BE COMPACTED TO THE SATISFACTION OF THE ENGINEER PRIOR TO PLACING AGGREGATE SUBGRADE MATERIAL.

ONLY THOSE TREES DESIGNATED BY THE ENGINEER OR LISTED IN THE TREE REMOVAL SCHEDULE SHALL BE REMOVED. TREES NOT MARKED FOR REMOVAL SHALL BE CONSIDERED AS DESIGNATED TO BE SAVED AND SHALL BE PROTECTED UNDER THE PROVISIONS OF ARTICLE 201.05.

EXCEPT AS NOTED ON THE PLANS, PAVEMENT GRADES SHOWN ARE AT THE TOP OF PAVEMENT SURFACES.

THE ENGINEER WILL BE THE SOLE JUDGE CONCERNING CURING TIME FOR THE VARIOUS HOT-MIX ASPHALT LIFTS.

FOR STABILIZATION, ALL TYPE III BARRICADES SHALL REQUIRE A MINIMUM OF FOUR SAND BAGS PER BARRICADE.

SEEDING SHALL NOT BE PERMITTED AT ANY TIME WHEN THE GROUND IS FROZEN, WET, OR IN AN UNTILLABLE CONDITION. LOCATIONS TO BE SEEDED WILL BE DETERMINED BY THE ENGINEER.

ANY REFERENCE TO A STANDARD IN THESE PLANS SHALL BE INTERPRETED TO MEAN IDOT HIGHWAY STANDARD AS INDICATED BY THE VERSION SHOWN IN THE LIST OF STANDARDS ON THE COPY INCLUDED IN THESE PLANS.

THE FOLLOWING RATES OF APPLICATION HAVE BEEN ASSUMED IN CALCULATING PLAN QUANTITIES:

GRANULAR MATERIALS .....	2.05 TONS/CU YD
BITUMINOUS MATERIALS PRIME COAT .....	0.05 LBS/SQ FT OR
	0.025 LBS/SQ FT
HOT-MIX ASPHALT SURFACE COURSE .....	112 LBS/SQ YD/INCH
HOT-MIX ASPHALT BINDER COURSE .....	112 LBS/SQ YD/INCH
NITROGEN FERTILIZER NUTRIENT .....	60 LBS/ACRE (SODDING) 90 LBS/ACRE (SEEDING)
PHOSPHORUS FERTILIZER NUTRIENT .....	60 LBS/ACRE (SODDING) 90 LBS/ACRE (SEEDING)
POTASSIUM FERTILIZER NUTRIENT .....	60 LBS/ACRE (SODDING) 90 LBS/ACRE (SEEDING)

**LIST OF STANDARDS**

000001-08	STANDARD SYMBOLS, ABBREVIATIONS AND PATTERNS
280001-07	TEMPORARY EROSION CONTROL SYSTEMS
442201-03	CLASS C AND D PATCHES
482001-02	HOT-MIX SHOULDER ADJACENT TO FLEXIBLE PAVEMENT
542301-03	PRECAST REINFORCED CONCRETE FLARED END SECTION
542401-04	METAL FLARED END SECTION FOR PIPE CULVERTS
701001-02	OFF-RD OPERATIONS, 2L, 2W, MORE THAN 15' (4.5 m) AWAY
701006-05	OFF-RD OPERATIONS, 2L, 2W, 15' (4.5 m) TO 24" (600 mm) FROM PAVEMENT EDGE
701011-04	OFF-RD MOVING OPERATIONS, 2L, 2W, DAY ONLY
701201-05	LANE CLOSURE, 2L, 2W, DAY ONLY, FOR SPEEDS ≥ 45 MPH
701301-04	LANE CLOSURE, 2L, 2W, SHORT TIME OPERATIONS
701306-04	LANE CLOSURE, 2L, 2W, SLOW MOVING OPERATIONS DAY ONLY, FOR SPEEDS ≥ 45 MPH
701311-03	LANE CLOSURE, 2L, 2W, MOVING OPERATIONS - DAY ONLY
701901-10	TRAFFIC CONTROL DEVICES
B.L.R. 17-4	TRAFFIC CONTROL DEVICES - DAY LABOR CONSTRUCTION
B.L.R. 21-9	TYPICAL APPLICATION OF TRAFFIC CONTROL DEVICES FOR CONSTRUCTION ON RURAL LOCAL HIGHWAYS

MODEL: general notes sheet  
 FILE NAME: V:\431803 - Glidden and Baseline design\CADD Sheets\4318\_01\_sah-hgennote.dgn



USER NAME = BWedemeier	DESIGNED -	REVISED -
	DRAWN -	REVISED -
PLOT SCALE = \$SCALE\$	CHECKED -	REVISED -
PLOT DATE = 10/28/2024	DATE -	REVISED -

**DEKALB COUNTY  
 HIGHWAY DEPARTMENT**

**CH 5 (GLIDDEN RD)  
 HIGHWAY STANDARDS, GENERAL NOTES & LEGEND**

SCALE: N/A SHEET 1 OF 1 SHEETS STA. N/A TO STA. N/A

RT. NO.	SECTION	COUNTY	TOTAL SHEETS	SHEET NO.
CH 5	20-00272-00-5P	DEKALB	17	2
			CONTRACT NO. 87866	
		ILLINOIS	FED. AID PROJECT	

**SUMMARY OF QUANTITIES**

CODE NO.	ITEM	UNIT	CONSTRUCTION CODE
			SAFETY 0004 RURAL
20200100	EARTH EXCAVATION	CU YD	3418
20800150	TRENCH BACKFILL	CU YD	16
25000210	SEEDING, CLASS 2A	ACRE	0.75
25000400	NITROGEN FERTILIZER NUTRIENT	POUND	69
25000500	PHOSPHORUS FERTILIZER NUTRIENT	POUND	69
25000600	POTASSIUM FERTILIZER NUTRIENT	POUND	69
25100630	EROSION CONTROL BLANKET	SQ YD	3657
28000250	TEMPORARY EROSION CONTROL SEEDING	POUND	75
28000305	TEMPORARY DITCH CHECKS	FOOT	180
28000400	PERI METER EROSION BARRIER	FOOT	648
28000500	INLET AND PIPE PROTECTION	EACH	2
30300118	AGGREGATE SUBGRADE IMPROVEMENT, 18"	SQ YD	1975
35101800	AGGREGATE BASE COURSE, TYPE B 6"	SQ YD	1290
40600290	BITUMINOUS MATERIALS (TACK COAT)	POUND	638
40600370	LONGITUDINAL JOINT SEALANT	FOOT	656
40603080	HOT-MIX ASPHALT BINDER COURSE, IL-19.0, N50	TON	1089
40604050	HOT-MIX ASPHALT SURFACE COURSE, IL-9.5, MIX "C", N50	TON	198
44000100	PAVEMENT REMOVAL	SQ YD	1780
44000155	HOT-MIX ASPHALT SURFACE REMOVAL, 1 1/2"	SQ YD	495
44201771	CLASS D PATCHES, TYPE IV, 10 INCH	SQ YD	68
48101600	AGGREGATE SHOULDERS, TYPE B 8"	SQ YD	564
48203029	HOT-MIX ASPHALT SHOULDERS, 8"	SQ YD	580
50104400	CONCRETE HEADWALL REMOVAL	EACH	3
50105220	PIPE CULVERT REMOVAL	FOOT	49
54001001	BOX CULVERT END SECTIONS, CULVERT NO. 1	EACH	2
54010402	PRECAST CONCRETE BOX CULVERTS 4' X 2'	FOOT	78
542D0229	PIPE CULVERTS, CLASS D, TYPE 1 24"	FOOT	51
67100100	MOBILIZATION	L SUM	1
* 78001110	PAINT PAVEMENT MARKING - LINE 4"	FOOT	5180
X1200050	BOX CULVERT REMOVAL	FOOT	78
X7010216	TRAFFIC CONTROL AND PROTECTION, (SPECIAL)	L SUM	1
Z0013798	CONSTRUCTION LAYOUT	L SUM	1
Z0030850	TEMPORARY INFORMATION SIGNING	SQ FT	42

\* = SPECIALTY ITEM

MODEL: 500 Sheet 1  
FILE NAME: V:\0118101 - Glidden and Baseline.dwg\0118101-SP-S00.dgn



USER NAME = BWedemeler  
PLOT SCALE = 0.18666633" / in.  
PLOT DATE = 3/21/2024

DESIGNED -  
DRAWN -  
CHECKED -  
DATE -

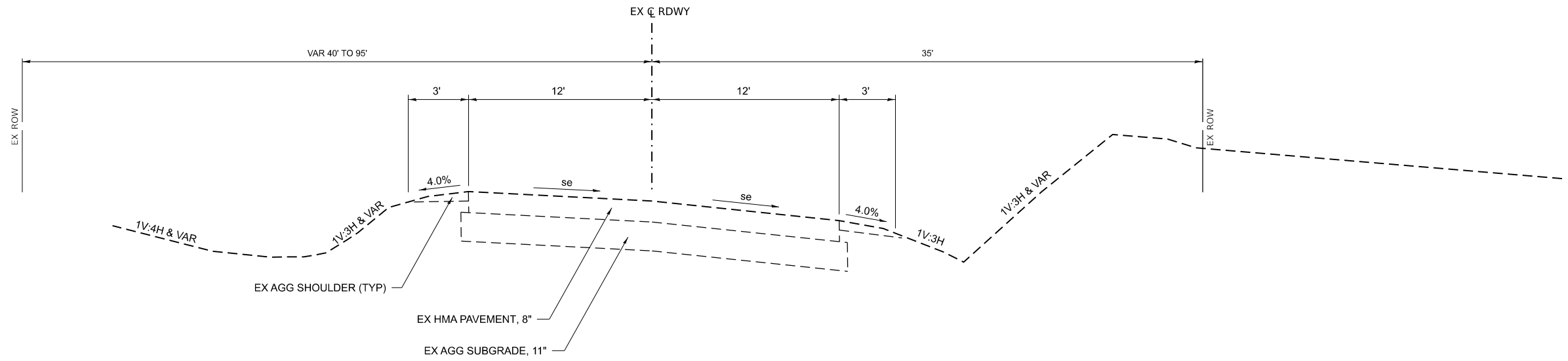
REVISED -  
REVISED -  
REVISED -  
REVISED -

**DEKALB COUNTY  
HIGHWAY DEPARTMENT**

**CH 5 (GLIDDEN RD)  
SUMMARY OF QUANTITIES**

SCALE: N/A SHEET 1 OF 1 SHEETS STA. N/A TO STA. N/A

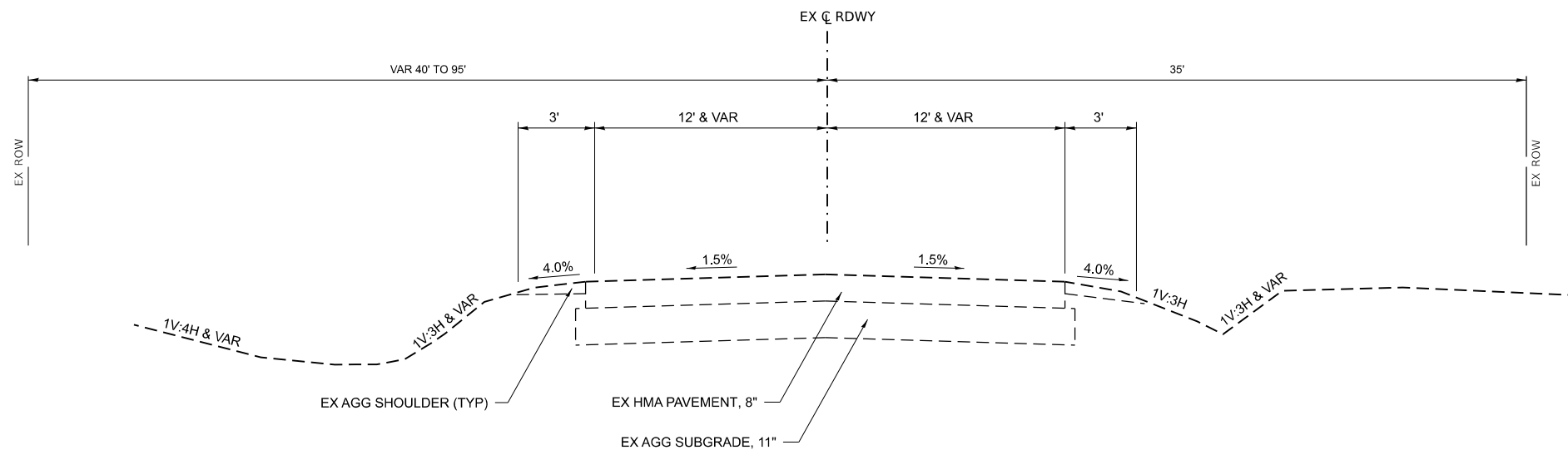
RTE. NO.	SECTION	COUNTY	TOTAL SHEETS	SHEET NO.
CH 5	20-00272-00-SP	DEKALB	17	3
CONTRACT NO. 87866				
ILLINOIS   FED. AID PROJECT				



**EXISTING TYPICAL SECTION**

**C.H. 5 (GLIDDEN RD.)**

STA 90+68.00 TO STA 99+57.00



**EXISTING TYPICAL SECTION**

**C.H. 5 (GLIDDEN RD.)**

STA 99+57.00 TO STA 99+75.63

MODEL: Existing Typical.dwg  
FILE NAME: Y:\21303 - Glidden and Baseline design\CADD Sheets\018\_01-Typical.dwg



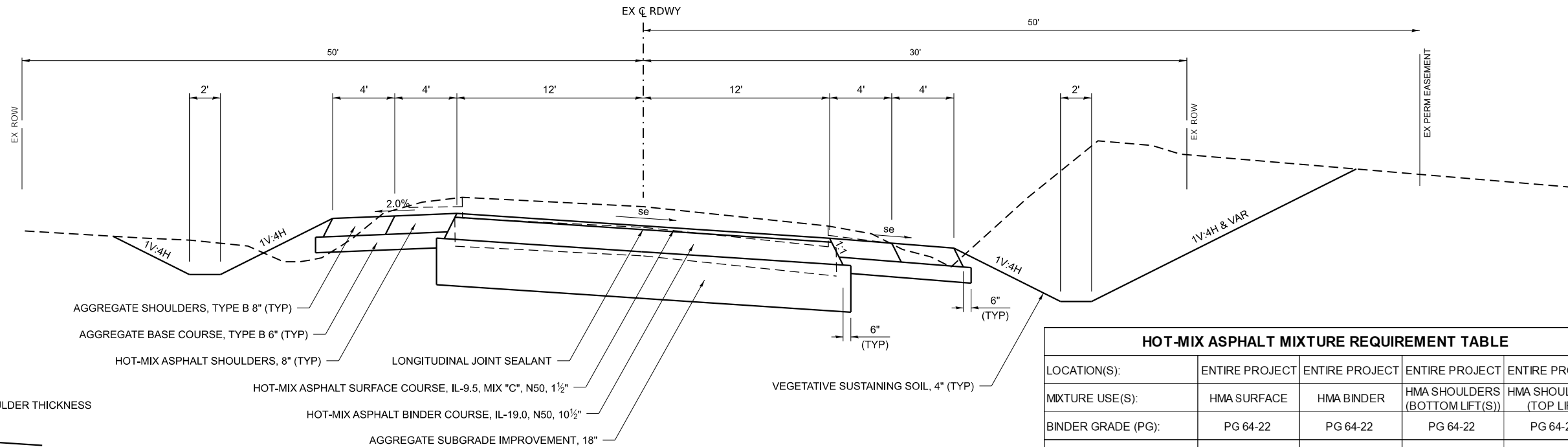
USER NAME = BWedemeier	DESIGNED -	REVISED -
	DRAWN -	REVISED -
PLOT SCALE = 0.1667' / in.	CHECKED -	REVISED -
PLOT DATE = 3/21/2024	DATE -	REVISED -

**DEKALB COUNTY  
HIGHWAY DEPARTMENT**

<b>CH 5 (GLIDDEN RD)</b>		<b>EXISTING TYPICAL SECTIONS</b>	
SCALE: N/A	SHEET 1 OF 1 SHEETS	STA. N/A	TO STA. N/A

RT. NO.	SECTION	COUNTY	TOTAL SHEETS	SHEET NO.
CH 5	20-00272-00-5P	DEKALB	17	4
CONTRACT NO. 87866				
ILLINOIS FED. AID PROJECT				

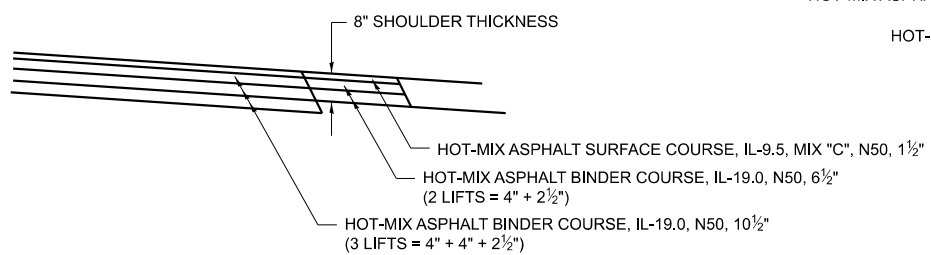




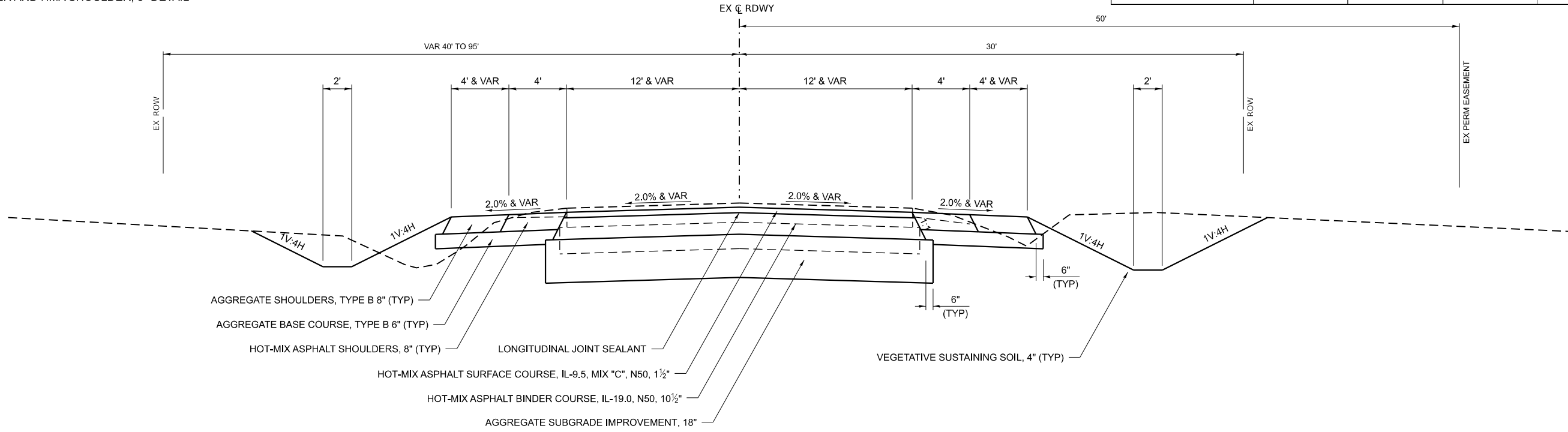
AGGREGATE SHOULDERS, TYPE B 8" (TYP)  
 AGGREGATE BASE COURSE, TYPE B 6" (TYP)  
 HOT-MIX ASPHALT SHOULDERS, 8" (TYP)  
 LONGITUDINAL JOINT SEALANT  
 HOT-MIX ASPHALT SURFACE COURSE, IL-9.5, MIX "C", N50, 1½"  
 HOT-MIX ASPHALT BINDER COURSE, IL-19.0, N50, 10½"  
 AGGREGATE SUBGRADE IMPROVEMENT, 18"  
 VEGETATIVE SUSTAINING SOIL, 4" (TYP)

HOT-MIX ASPHALT MIXTURE REQUIREMENT TABLE				
LOCATION(S):	ENTIRE PROJECT	ENTIRE PROJECT	ENTIRE PROJECT	ENTIRE PROJECT
MIXTURE USE(S):	HMA SURFACE	HMA BINDER	HMA SHOULDERS (BOTTOM LIFT(S))	HMA SHOULDERS (TOP LIFT)
BINDER GRADE (PG):	PG 64-22	PG 64-22	PG 64-22	PG 64-22
DESIGN AIR VOIDS:	4.0% @ N50	4.0% @ N50	4.0% @ N50	4.0% @ N50
MIXTURE COMPOSITION:	IL 9.5	IL 19.0	IL 19.0	IL 9.5
FRICTION AGGREGATE:	MIXTURE C			MIXTURE C
MIXTURE WEIGHT:	112 #/SY/IN	112 #/SY/IN	112 #/SY/IN	112 #/SY/IN
QUALITY MANAGEMENT PROGRAM:	QCQA	QCQA	QCQA	QCQA
DENSITY TEST METHOD:	CORES/NUCLEAR	CORES/NUCLEAR	CORES/NUCLEAR	CORES/NUCLEAR

**PROPOSED TYPICAL SECTION**  
**C.H. 5 (GLIDDEN RD.)**  
 STA 93+20.03 TO STA 99+60.16



**DETAIL A**  
 HMA BINDER AND HMA SHOULDER, 8" DETAIL



AGGREGATE SHOULDERS, TYPE B 8" (TYP)  
 AGGREGATE BASE COURSE, TYPE B 6" (TYP)  
 HOT-MIX ASPHALT SHOULDERS, 8" (TYP)  
 LONGITUDINAL JOINT SEALANT  
 HOT-MIX ASPHALT SURFACE COURSE, IL-9.5, MIX "C", N50, 1½"  
 HOT-MIX ASPHALT BINDER COURSE, IL-19.0, N50, 10½"  
 AGGREGATE SUBGRADE IMPROVEMENT, 18"  
 VEGETATIVE SUSTAINING SOIL, 4" (TYP)

**PROPOSED TYPICAL SECTION**  
**C.H. 5 (GLIDDEN RD.)**  
 STA 99+60.16 TO STA 99+75.63

MODEL: Proposed Typical 1  
 FILE NAME: \\04938303 - Glidden and Baseline design\CADD Sheets\0918\_01-typical.dgn

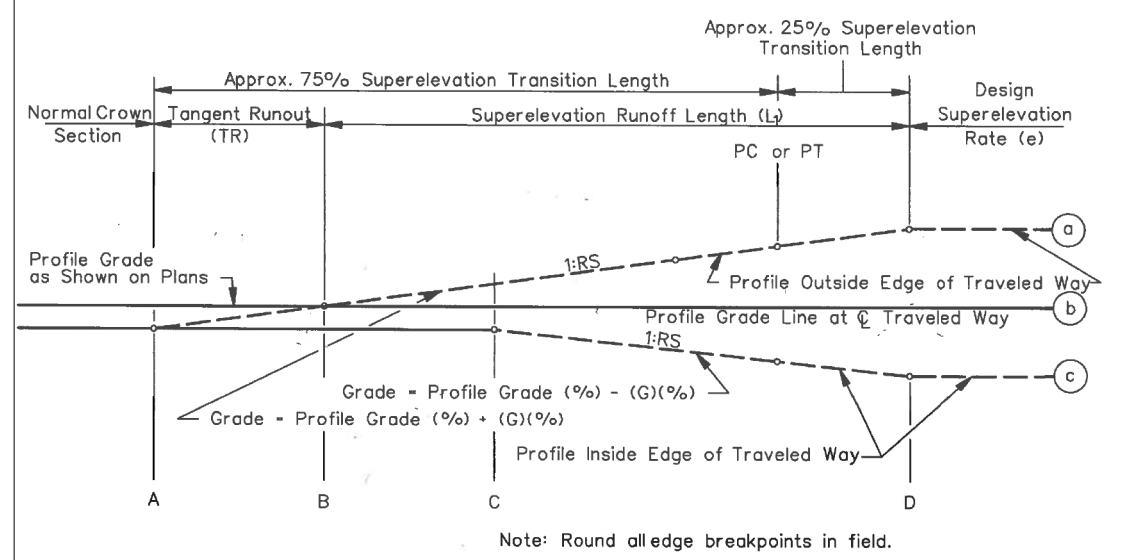


USER NAME = BWedemeier	DESIGNED -	REVISED -
	DRAWN -	REVISED -
PLOT SCALE = 0.1667' / in.	CHECKED -	REVISED -
PLOT DATE = 3/21/2024	DATE -	REVISED -

**DEKALB COUNTY**  
**HIGHWAY DEPARTMENT**

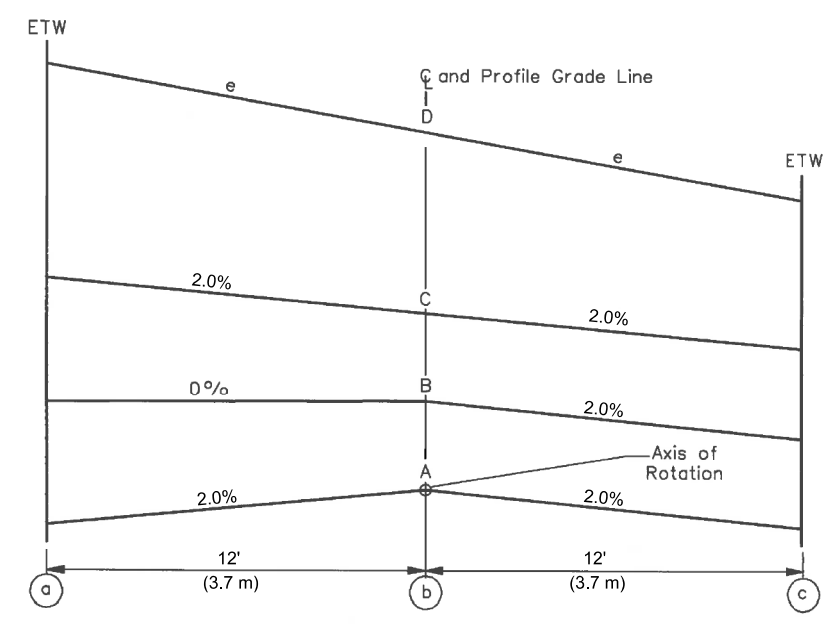
<b>CH 5 (GLIDDEN RD)</b>		SCALE: N/A	SHEET 1 OF 1 SHEETS	STA. N/A	TO STA. N/A
<b>PROPOSED TYPICAL SECTIONS</b>					

RT. NO.	SECTION	COUNTY	TOTAL SHEETS	SHEET NO.
CH 5	20-00272-00-5P	DEKALB	17	5
ILLINOIS FED. AID PROJECT			CONTRACT NO. 87866	



**PROPOSED SUPERELEVATION TABLE**  
CH 5 (GLIDDEN ROAD)

SECTIONS	CHAIN	STA	LEFT		PROFILE GRADE	RIGHT	
			EOP Elev.	e		EOP Elev.	e
D	CH 5	93+50.00	842.28	3.80%	841.82	841.37	-3.80%
D	CH 5	98+06.00	851.31	3.80%	850.86	850.40	-3.80%
PT	CH 5	98+39.01	851.34	2.56%	851.03	850.73	-2.56%
C	CH 5	98+53.84	851.33	2.00%	851.09	850.85	-2.00%
B	CH 5	99+07.00	851.19	0.00%	851.19	850.95	-2.00%
A	CH 5	99+60.16	850.89	2.00%	851.13	850.89	-2.00%



**AXIS OF ROTATION ABOUT CENTERLINE**  
**(Two-Lane Highway)**  
**Figure 29-3E**

NOTE: REFER TO THE TABLE FOR HIGH AND LOW SIDE OF THE SUPERELEVATION

MODEL: Detail Sheet 1  
FILE NAME: V:\2023\03 - Glidden and Baseline design\CADD Sheets\0918\_01\_shtdetail-superelevation.dgn



USER NAME = BWedemeier	DESIGNED -	REVISED -
PLOT SCALE = 0.16666633' / in.	DRAWN -	REVISED -
PLOT DATE = 3/21/2024	CHECKED -	REVISED -
	DATE -	REVISED -

**DEKALB COUNTY**  
**HIGHWAY DEPARTMENT**

**CH 5 (GLIDDEN RD)**  
**SUPERELEVATION TABLE & DETAILS**

SCALE: N/A SHEET 1 OF 1 SHEETS STA. N/A TO STA. N/A

RTE. NO.	SECTION	COUNTY	TOTAL SHEETS	SHEET NO.
CH 5	20-00272-00-5P	DEKALB	17	6
CONTRACT NO. 87866				
ILLINOIS FED. AID PROJECT				

EARTHWORK						
1		2	3	4	5	
STATION	TO	STATION	EARTH EXCAVATION	SUITABLE EXCAVATION ADJUSTED FOR SHRINKAGE	EMBANKMENT	EARTHWORK BALANCE WASTE(+) OR SHORTAGE(-)
CU YD						
CH 5 (GLIDDEN RD)						
93+20	TO	99+75.6	3418	2564	135	2429
TOTAL			3418	2564	135	2429

SHRINKAGE FACTOR: 25%  
EARTH EXCAVATION:  
COLUMN 1, 2, & 4 - LOCATION AND QUANTITIES FROM CROSS SECTIONS  
CUT = EARTH EXCAVATION AND FILL = EMBANKMENT  
COLUMN 3 = (COLUMN 2) x (1 - EARTH EXCAVATION SHRINKAGE FACTOR)  
COLUMN 5 = COLUMN 3 - COLUMN 4

PAY ITEMS:  
COLUMN 2 IS EARTH EXCAVATION = 3418 CU YD

NOTES:  
1. THE TOP 4" OF EMBANKMENT SHALL CONSIST OF VEGETATION SUSTAINING SOIL.

PAVEMENT REMOVAL			
LOCATION			AREA
STATION	TO	STATION	SQ YD
CH 5 (GLIDDEN RD)			
93+20.0	TO	99+75.6	1780
TOTAL			1780

CONCRETE HEADWALL REMOVAL			
STATION +/-	SIDE	EACH	
CH 5 (GLIDDEN RD)			
99+62	LT	1	
100+15	LT	1	
100+28	RT	1	
TOTAL			3

PAINT PAVEMENT MARKING					
LOCATION		LINE 4"			
		SOLID WHITE LANE	SKIP DASH YELLOW LANE	SOLID YELLOW LANE	DOUBLE YELLOW LANE
STATION	TO	STATION	FOOT	FOOT	FOOT
CH 5 (GLIDDEN RD)					
93+20	TO	96+22	604	80	302
96+22	TO	99+75	733		706
99+75	TO	100+35	137		28
SUB-TOTAL			1474	80	302
TOTAL			2590		
2 APPLICATIONS			5180		

BOX CULVERT REMOVAL			
STATION +/-	SIDE	36" x 30" PCC FOOT	
CH 5 (GLIDDEN RD)			
100+22	XRD	78	
TOTAL			78

PAVEMENT										
LOCATION		BITUMINOUS MATERIALS (TACK COAT)	AGGREGATE SUBGRADE IMPROVEMENT, 18"	AGGREGATE BASE COURSE, TYPE B 6"	HOT-MIX ASPHALT BINDER COURSE, IL-19.0, N50	HOT-MIX ASPHALT SURFACE COURSE, IL-9.5, MIX "C", N50	AGGREGATE SHOULDERS, TYPE B 8"	HOT-MIX ASPHALT SHOULDERS, 8"	LONGITUDINAL JOINT SEALANT	
STATION	TO	STATION	POUND	SQ YD	SQ YD	TON	TON	SQ YD	SQ YD	FOOT
CH 5 (GLIDDEN RD)										
93+20.0	TO	99+75.6	416	1975	1290	1089	155	540	580	656
99+75.6	TO	100+35.0	222				43	24		
TOTAL			638	1975	1290	1089	198	564	580	656

NOTE: LONGITUDINAL JOINT SEALANT TO BE PLACED UNDER HMA SURFACE COURSE LIFT. SEE SPECIAL PROVISIONS FOR MORE INFORMATION.

INLET AND PIPE PROTECTION		
STATION	OFFSET	EACH
CH 5 (GLIDDEN RD)		
99+62	38' LT	1
100+16	39' LT	1
TOTAL		2

PIPE CULVERT REMOVAL			
STATION +/-	SIDE	24" CMP FOOT	
CH 5 (GLIDDEN RD)			
99+85	LT	49	
TOTAL			49

CLASS D PATCHES			
LOCATION	SIDE	TYPE IV 10 INCH SQ YD	
CH 5 (GLIDDEN RD)			
99+87	X-RD PIPE	27	
100+23	X-RD BOX	41	
TOTAL			68

HOT-MIX ASPHALT SURFACE REMOVAL, 1 1/2"				
LOCATION		AREA		
STATION	TO	STATION	SQ YD	
CH 5 (GLIDDEN RD)				
99+76	TO	100+35	495	
TOTAL				495

NOTE: TOTAL QUANTITY INCLUDES REMOVAL OF PORTIONS SHOWN FOR BASE LINE ROAD

PIPE CULVERTS			
STATION	SIDE	PIPE CULVERTS	TRENCH BACKFILL
		CLASS D TYPE 1 24" FOOT	
CH 5 (GLIDDEN RD)			
99+87.8	LT	51	16
TOTAL		51	16

NOTE: PIPE SHALL BE ALUMINIZED. SEE SPECIAL PROVISIONS.

TEMPORARY DITCH CHECKS (ROLLED EXCELSIOR)					
LOCATION		LENGTH	LOCATION		LENGTH
STATION	OFFSET	FOOT	STATION	OFFSET	FOOT
CH 5 (GLIDDEN RD)					
LT SIDE			RT SIDE		
93+34	LT	12	95+57	RT	12
93+63	LT	12	96+03	RT	12
94+04	LT	12	96+58	RT	12
94+45	LT	12	97+19	RT	12
94+86	LT	12	99+00	RT	12
95+27	LT	12			
95+71	LT	12			
96+26	LT	12			
96+95	LT	12			
99+00	LT	12			
LT SIDE TOTAL		120	RT SIDE TOTAL		60
TOTAL			180		

SEEDING, EROSION CONTROL BLANKET & NUTRIENTS									
LOCATION				SEEDING, CLASS 2A	NITROGEN FERTILIZER NUTRIENT	PHOSPHORUS FERTILIZER NUTRIENT	POTASSIUM FERTILIZER NUTRIENT	EROSION CONTROL BLANKET	TEMPORARY EROSION CONTROL SEEDING
STATION +/-	TO	STATION +/-	SIDE	ACRE	POUND	POUND	POUND	SQ YD	POUND
CH 5 (GLIDDEN ROAD)									
93+20	TO	100+40	RT	0.29	27	27	27	1420	29
93+20	TO	100+36	LT	0.46	42	42	42	2237	46
TOTAL				0.75	69	69	69	3657	75

SEEDING NUTRIENTS RATE OF APPLICATION: 90 LBS/ACRE  
USE 100 POUNDS PER ACRE FOR TEMPORARY EROSION CONTROL SEEDING.

PERIMETER EROSION BARRIER				
STATION	TO	STATION	SIDE	LENGTH FOOT
CH 5 (GLIDDEN RD)				
93+20	TO	99+75	RT	648
TOTAL				648

NOTES:  
1. PERIMETER EROSION BARRIER IS SILT FENCE.

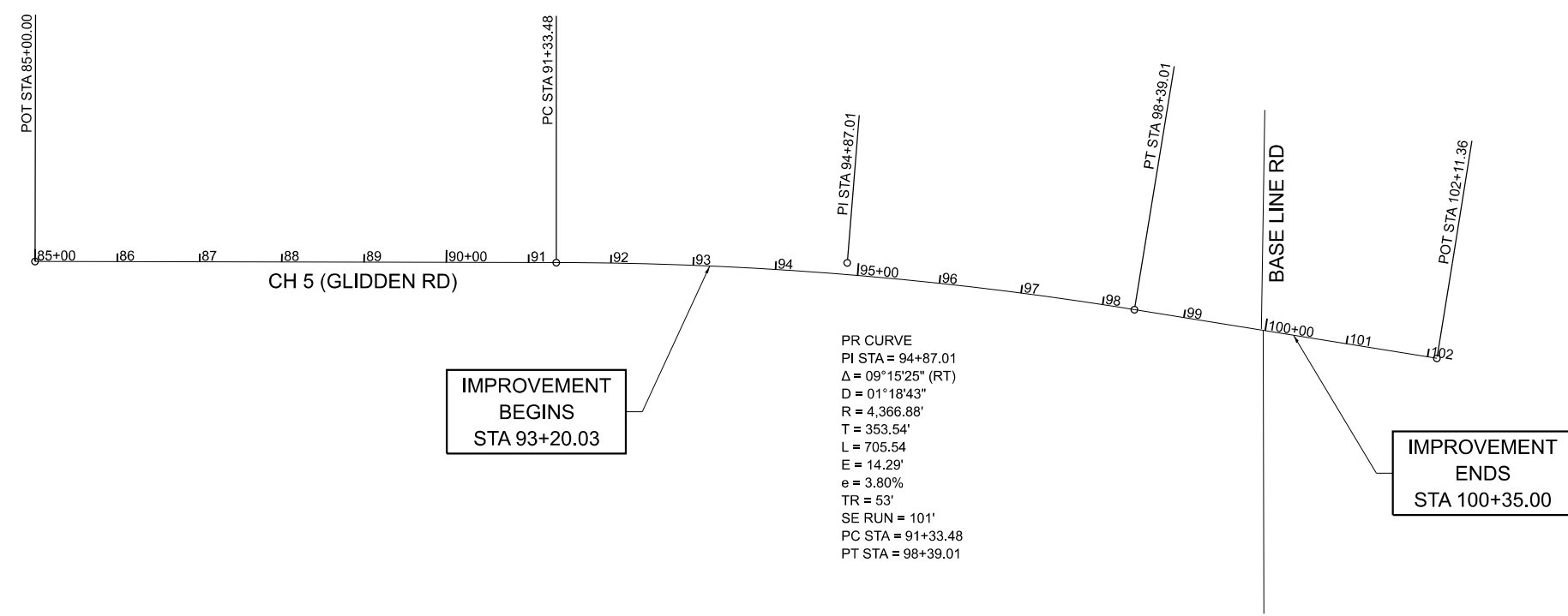
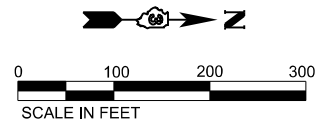
MODEL: schedule sheet 1  
FILE NAME: V0493803 - Glidden and Baseline design\CADD Streets\0918\_01-schedule.dgn



USER NAME = BWedemeier	DESIGNED -	REVISED -
PLOT SCALE = 0.16666633 ' / in.	DRAWN -	REVISED -
PLOT DATE = 3/21/2024	CHECKED -	REVISED -
	DATE -	REVISED -

DEKALB COUNTY  
HIGHWAY DEPARTMENT

CH 5 (GLIDDEN RD) SCHEDULE OF QUANTITIES				SCALE: N/A	SHEET 1 OF 1 SHEETS	STA. N/A TO STA. N/A	RT. NO.	SECTION	COUNTY	TOTAL SHEETS	SHEET NO.
							CH 5	20-00272-00-5P	DEKALB	17	7
							CONTRACT NO. 87866				
							ILLINOIS FED. AID PROJECT				



IMPROVEMENT  
BEGINS  
STA 93+20.03

PR CURVE  
PI STA = 94+87.01  
Δ = 09°15'25" (RT)  
D = 01°18'43"  
R = 4,366.88'  
T = 353.54'  
L = 705.54'  
E = 14.29'  
e = 3.80%  
TR = 53'  
SE RUN = 101'  
PC STA = 91+33.48  
PT STA = 98+39.01

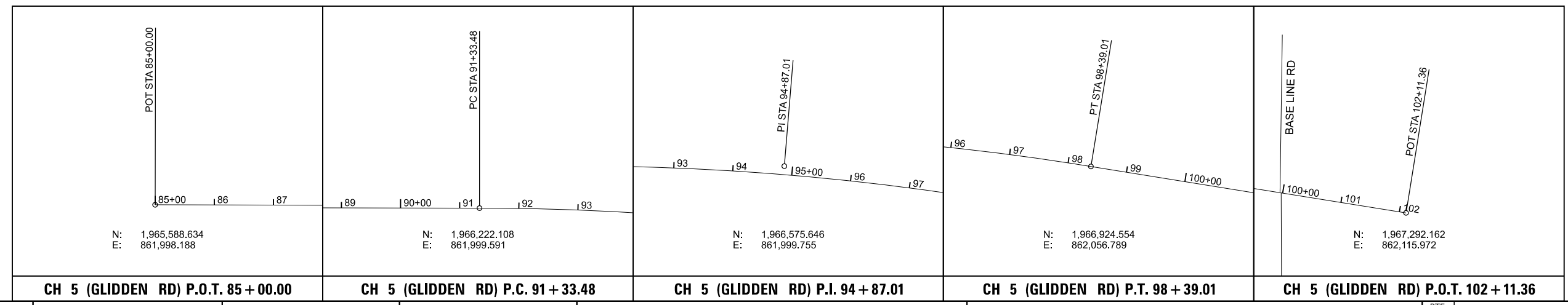
IMPROVEMENT  
ENDS  
STA 100+35.00

**BENCHMARK LIST**

- B.M. 1 = RR SPIKE SET IN POWER POLE,  
GLIDDEN RD., STA 91+10 RT., ELEV. = 831.34
- B.M. 2 = RR SPIKE SET IN POWER POLE,  
NE QUAD OF GLIDDEN / BASE LINE RD,  
ELEV. = 846.86

**CONTROL POINT LIST**

- C.P. 1 N: 1,967,041.381  
E: 862,113.323  
ELEV: 848.21
- C.P. 2 N: 1,966,504.267  
E: 861,962.780  
ELEV: 846.56



MODEL: ATB Sheet  
FILE NAME: \\04318.01 - Glidden and Baseline design\CADD Sheets\04318.01-sht-ATB.dgn



USER NAME = BWedemeier	DESIGNED -	REVISED -
PLOT SCALE = 0.16666633' / in.	DRAWN -	REVISED -
PLOT DATE = 3/21/2024	CHECKED -	REVISED -
	DATE -	REVISED -

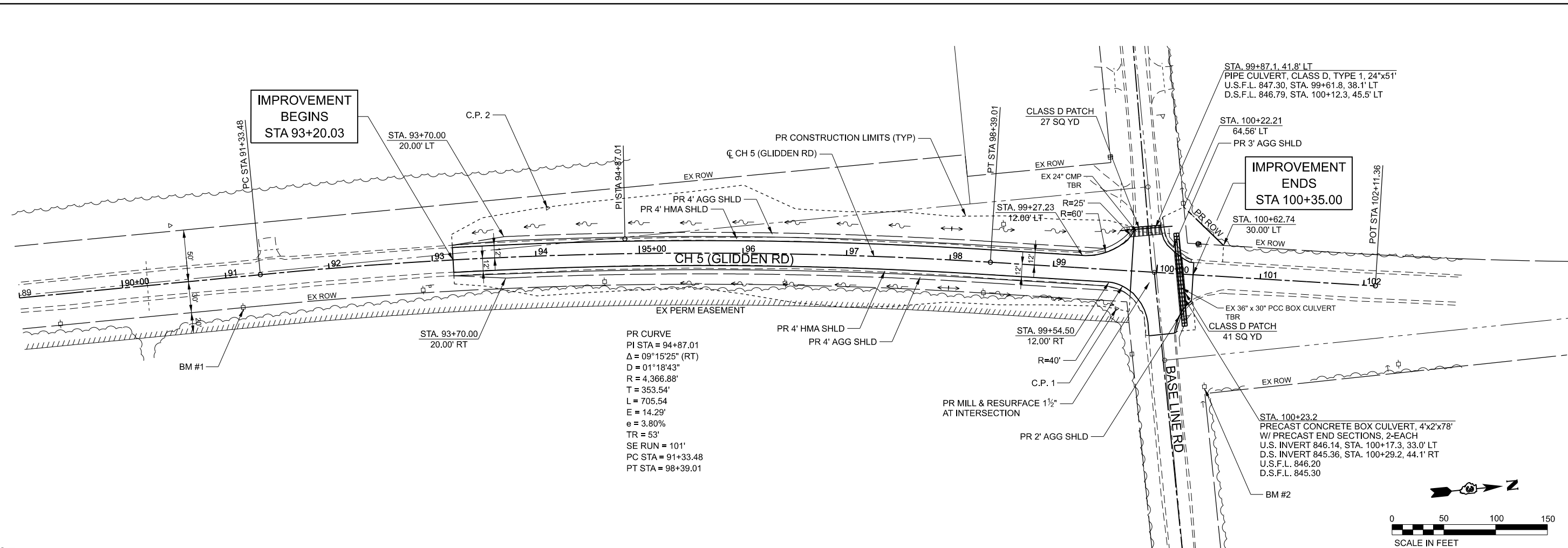
**DEKALB COUNTY  
HIGHWAY DEPARTMENT**

<b>CH 5 (GLIDDEN RD) ALIGNMENT &amp; BENCHMARKS</b>			
SCALE: 1"=100'	SHEET 1	OF 1 SHEETS	STA. N/A TO STA. N/A

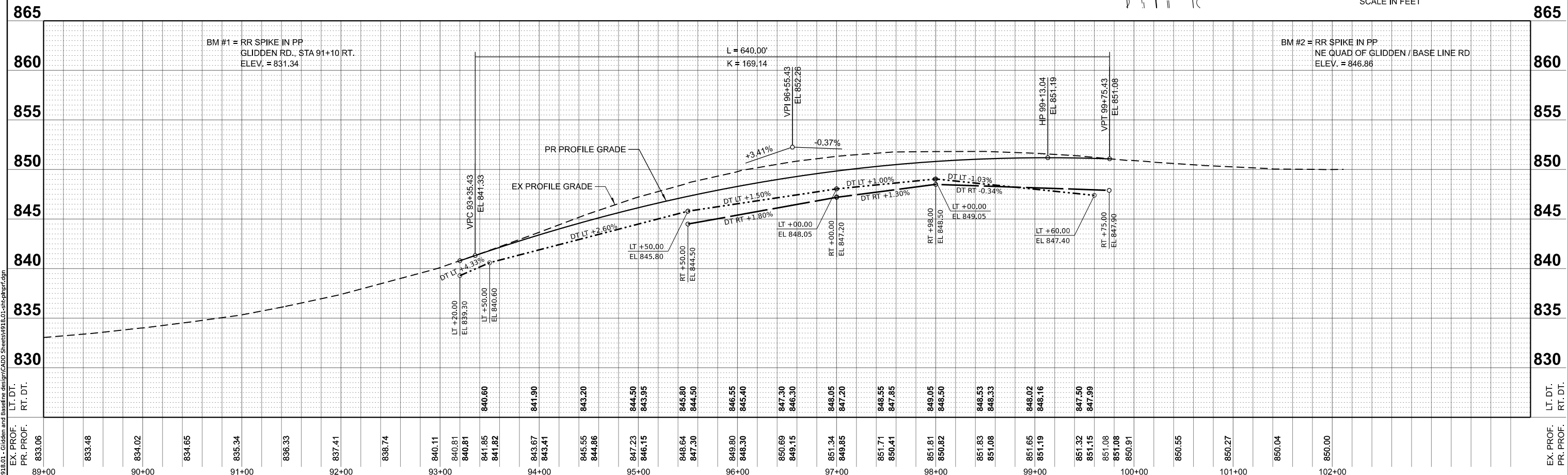
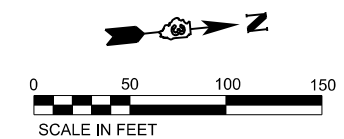
RT. NO.	SECTION	COUNTY	TOTAL SHEETS	SHEET NO.
	20-00272-00-5P	DEKALB	17	8
CONTRACT NO. 87866			ILLINOIS FED. AID PROJECT	



MODEL: R:\p\ch5\ch5 - Plan 1 (Sheet)  
 FILE NAME: V:\212101 - Glidden Baseline design\CADD Sheets\1918\_01-sht-pprpf.dwg



PR CURVE  
 PI STA = 94+87.01  
 $\Delta = 09^{\circ}15'25''$  (RT)  
 $D = 01^{\circ}18'43''$   
 $R = 4,366.88'$   
 $T = 353.54'$   
 $L = 705.54'$   
 $E = 14.29'$   
 $e = 3.80\%$   
 $TR = 53'$   
 $SE RUN = 101'$   
 PC STA = 91+33.48  
 PT STA = 98+39.01



STATION	EX. PROF.	PR. PROF.	STATION	EX. PROF.	PR. PROF.
89+00	833.06	833.06	94+00	843.41	843.41
89+50	833.48	833.48	94+50	843.86	843.86
90+00	834.02	834.02	95+00	844.15	844.15
90+50	834.65	834.65	95+50	844.50	844.50
91+00	835.34	835.34	96+00	845.40	845.40
91+50	836.33	836.33	96+50	846.30	846.30
92+00	837.41	837.41	97+00	847.20	847.20
92+50	838.74	838.74	97+50	848.55	848.55
93+00	840.11	840.11	98+00	849.85	849.85
93+50	840.81	840.81	98+50	851.71	851.71
94+00	841.85	841.85	99+00	851.85	851.85
94+50	843.67	843.67	99+50	851.81	851.81
95+00	845.55	845.55	100+00	851.65	851.65
95+50	847.23	847.23	100+50	851.32	851.32
96+00	848.64	848.64	101+00	851.15	851.15
96+50	849.80	849.80	101+50	851.08	851.08
97+00	850.69	850.69	102+00	850.91	850.91
97+50	851.34	851.34			
98+00	851.71	851.71			
98+50	851.81	851.81			
99+00	851.85	851.85			
99+50	851.81	851.81			
100+00	851.65	851.65			
100+50	851.32	851.32			
101+00	851.15	851.15			
101+50	851.08	851.08			
102+00	850.91	850.91			

	USER NAME = BWedemeyer	DESIGNED -	REVISED -	<b>DEKALB COUNTY</b> <b>HIGHWAY DEPARTMENT</b>	<b>CH 5 (GLIDDEN RD)</b> <b>PLAN &amp; PROFILE</b>	SECTION	COUNTY	TOTAL SHEETS	SHEET NO.
	PLOT SCALE = 0.16666633' / in.	CHECKED -	REVISED -			CH 5	DEKALB	17	9
	PLOT DATE = 3/21/2024	DATE -	REVISED -			CONTRACT NO. 87866			
						SCALE: H=50 V=5		SHEET 1 OF 1 SHEETS STA. 89+00.00 TO STA. 102+00.00	

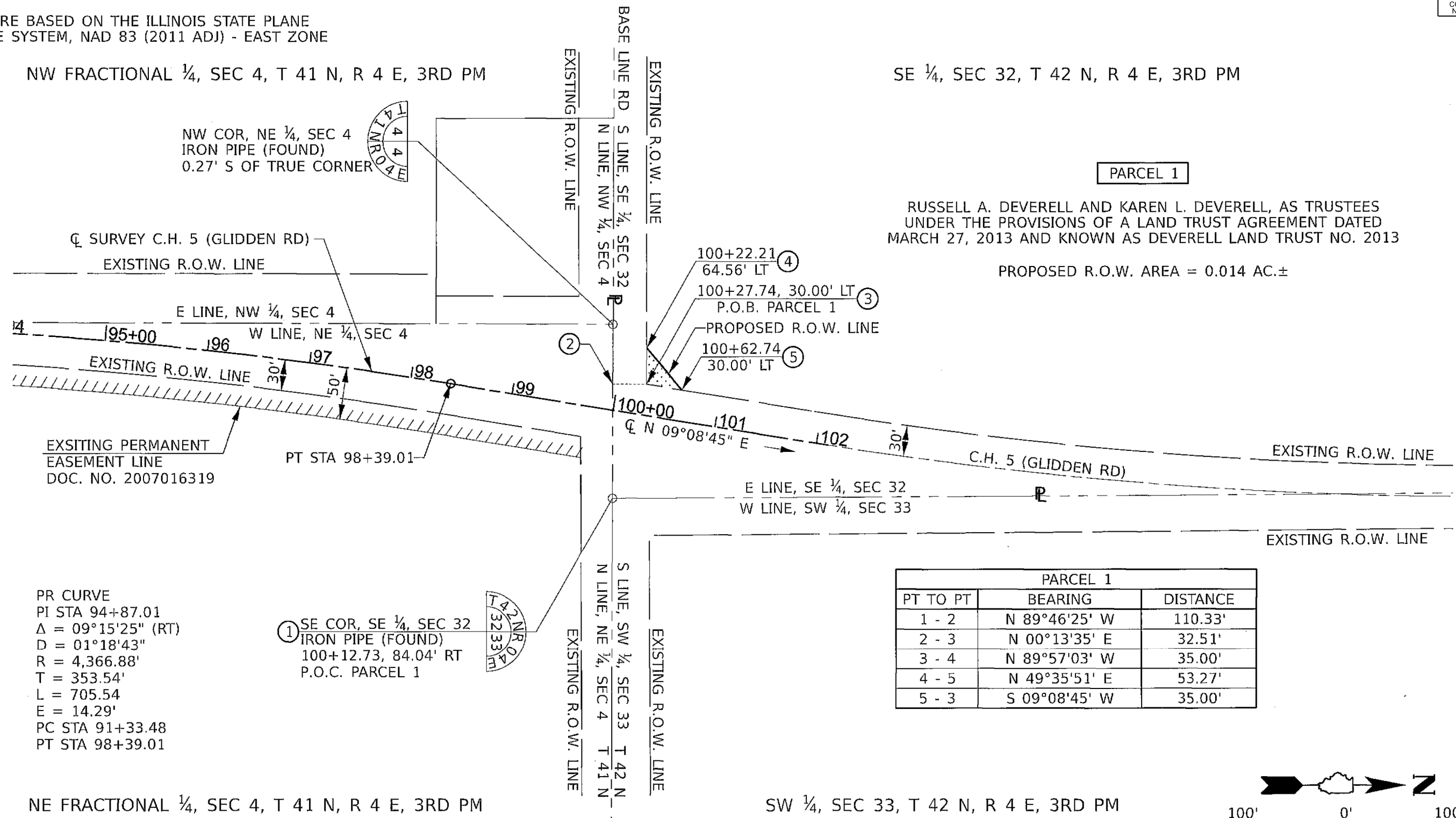
ILLINOIS FED. AID PROJECT

NOTES:

BEARINGS ARE BASED ON THE ILLINOIS STATE PLANE COORDINATE SYSTEM, NAD 83 (2011 ADJ) - EAST ZONE

NW FRACTIONAL 1/4, SEC 4, T 41 N, R 4 E, 3RD PM

SE 1/4, SEC 32, T 42 N, R 4 E, 3RD PM



PARCEL 1

RUSSELL A. DEVERELL AND KAREN L. DEVERELL, AS TRUSTEES UNDER THE PROVISIONS OF A LAND TRUST AGREEMENT DATED MARCH 27, 2013 AND KNOWN AS DEVERELL LAND TRUST NO. 2013

PROPOSED R.O.W. AREA = 0.014 AC.±

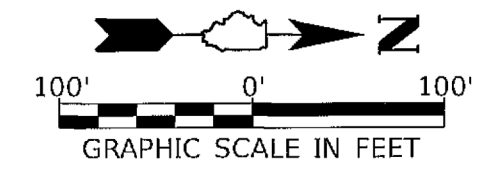
PR CURVE  
 PI STA 94+87.01  
 $\Delta = 09^{\circ}15'25''$  (RT)  
 $D = 01^{\circ}18'43''$   
 $R = 4,366.88'$   
 $T = 353.54'$   
 $L = 705.54'$   
 $E = 14.29'$   
 PC STA 91+33.48  
 PT STA 98+39.01

① SE COR, SE 1/4, SEC 32  
 IRON PIPE (FOUND)  
 100+12.73, 84.04' RT  
 P.O.C. PARCEL 1

PARCEL 1		
PT TO PT	BEARING	DISTANCE
1 - 2	N 89°46'25" W	110.33'
2 - 3	N 00°13'35" E	32.51'
3 - 4	N 89°57'03" W	35.00'
4 - 5	N 49°35'51" E	53.27'
5 - 3	S 09°08'45" W	35.00'

NE FRACTIONAL 1/4, SEC 4, T 41 N, R 4 E, 3RD PM

SW 1/4, SEC 33, T 42 N, R 4 E, 3RD PM



I, TIMOTHY C. QUIGG, A PROFESSIONAL LAND SURVEYOR IN THE STATE OF ILLINOIS DO HEREBY CERTIFY THAT THE PLAT AND DESCRIPTION HEREON IS A TRUE AND CORRECT REPRESENTATION OF THE SURVEY MADE UNDER MY SUPERVISION. THIS PROFESSIONAL SERVICE CONFORMS TO THE CURRENT ILLINOIS MINIMUM STANDARDS FOR A BOUNDARY SURVEY.



*Timothy C. Quigg* 3/25/24  
 TIMOTHY C. QUIGG  
 PROFESSIONAL LAND SURVEYOR NO. 3063

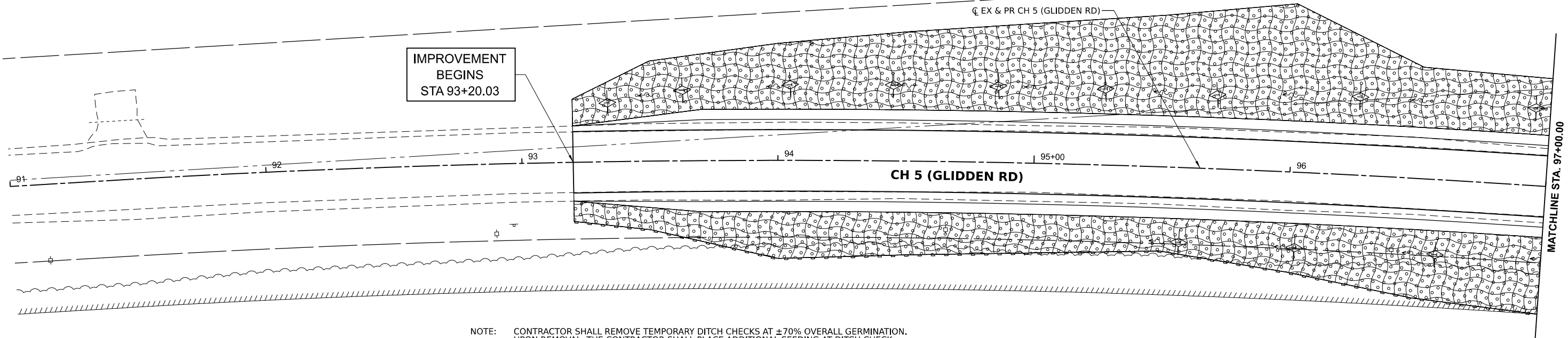
EXPIRES: 11/30/2024

- LEGEND
- = PROPERTY LINE
  - - - = PROPOSED R.O.W. LINE
  - = SECTION LINE
  - - - = EXISTING R.O.W. LINE
  - ▨ = REQUIRED R.O.W.

HUTCHISON ENGINEERING, INC  
 1801 W LAFAYETTE AVE  
 PO BOX 820  
 JACKSONVILLE, IL 62650  
 ILLINOIS PROFESSIONAL DESIGN  
 FIRM NO. 184-000825

RIGHT OF WAY PLAT

PARCEL 1  
 ROUTE C.H. 5 (GLIDDEN RD)  
 SECTION 20-00272-00-SP  
 STATION 100+22.21 TO 100+62.74  
 COUNTY DEKALB  
 SCALE 1"=100'  
 SHEET NO. 1 OF 1

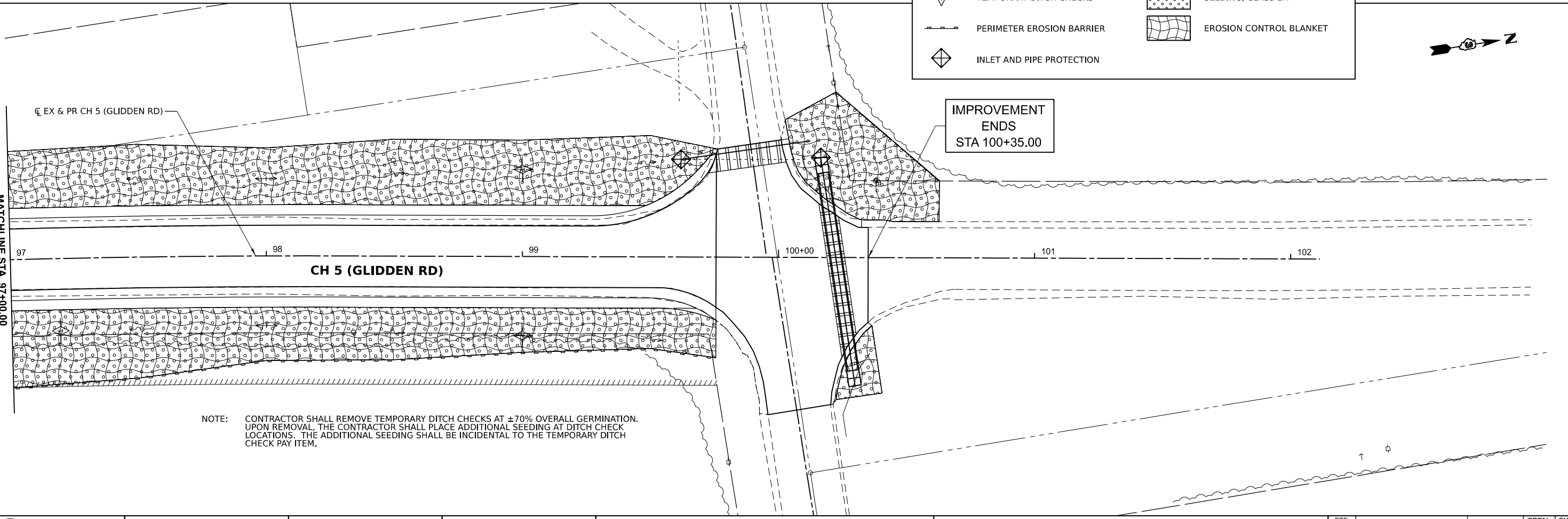


MATCHLINE STA. 97+00.00

NOTE: CONTRACTOR SHALL REMOVE TEMPORARY DITCH CHECKS AT ±70% OVERALL GERMINATION. UPON REMOVAL, THE CONTRACTOR SHALL PLACE ADDITIONAL SEEDING AT DITCH CHECK LOCATIONS. THE ADDITIONAL SEEDING SHALL BE INCIDENTAL TO THE TEMPORARY DITCH CHECK PAY ITEM.

**LEGEND**

	TEMPORARY DITCH CHECKS		SEEDING, CLASS 2A
	PERIMETER EROSION BARRIER		EROSION CONTROL BLANKET
	INLET AND PIPE PROTECTION		



MATCHLINE STA. 97+00.00

NOTE: CONTRACTOR SHALL REMOVE TEMPORARY DITCH CHECKS AT ±70% OVERALL GERMINATION. UPON REMOVAL, THE CONTRACTOR SHALL PLACE ADDITIONAL SEEDING AT DITCH CHECK LOCATIONS. THE ADDITIONAL SEEDING SHALL BE INCIDENTAL TO THE TEMPORARY DITCH CHECK PAY ITEM.

MODEL: P:\Glidden\_Altier - Plan 1 (Sheet)  
FILE NAME: Y:\4918031 - Glidden and Baseline design\CADD Sheets\4918\_01-eh-erosion.dgn



USER NAME = BWedemeier	DESIGNED -	REVISED -
PLOT SCALE = 0.16666633' / in.	DRAWN -	REVISED -
PLOT DATE = 3/21/2024	CHECKED -	REVISED -
	DATE -	REVISED -

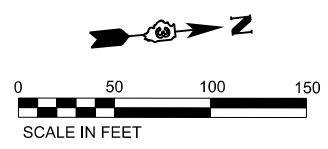
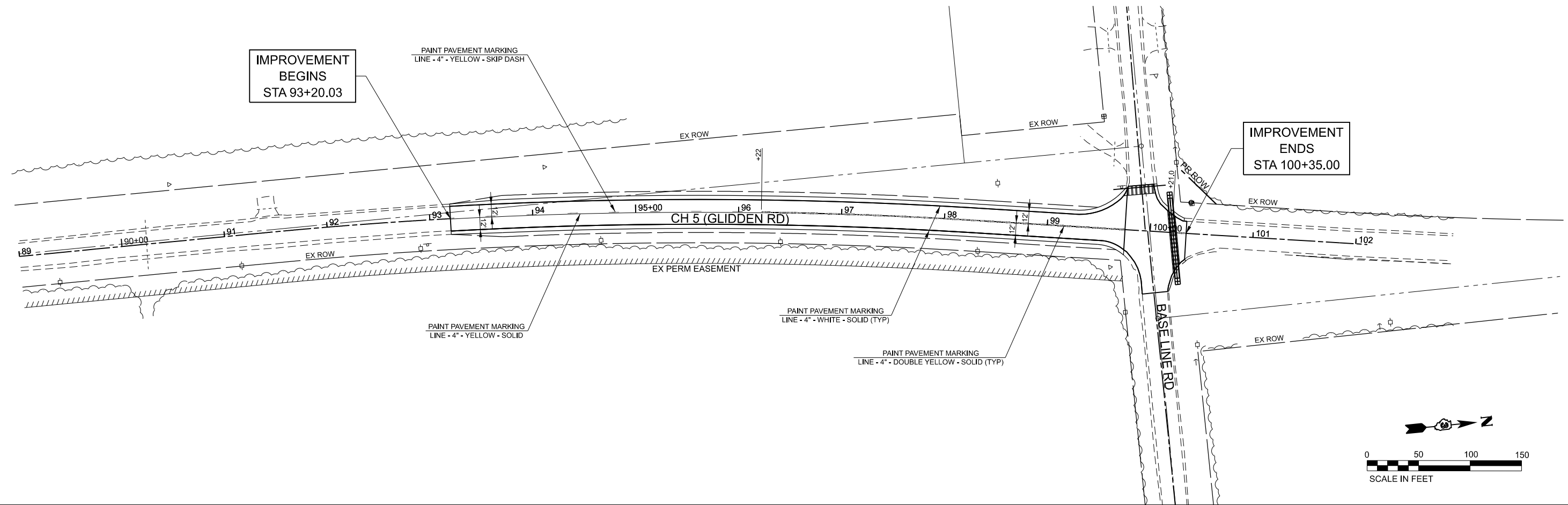
**DEKALB COUNTY  
HIGHWAY DEPARTMENT**

**CH 5 (GLIDDEN RD)  
EROSION CONTROL PLAN**

SCALE: 1"=20'      SHEET 1      OF 1      SHEETS      STA. 91+00.00      TO STA. 102+00.00

ROUTE NO.	SECTION	COUNTY	TOTAL SHEETS	SHEET NO.
CH 5	20-00272-00-5P	DEKALB	17	11
CONTRACT NO. 87866			ILLINOIS FED. AID PROJECT	

MODEL: R:\p\ch5 - Plan 1 (Sheet)  
 FILE NAME: V:\23101 - Glidden and Baseline design\CADD Streets\918\_01-sht1p1mk.dgn

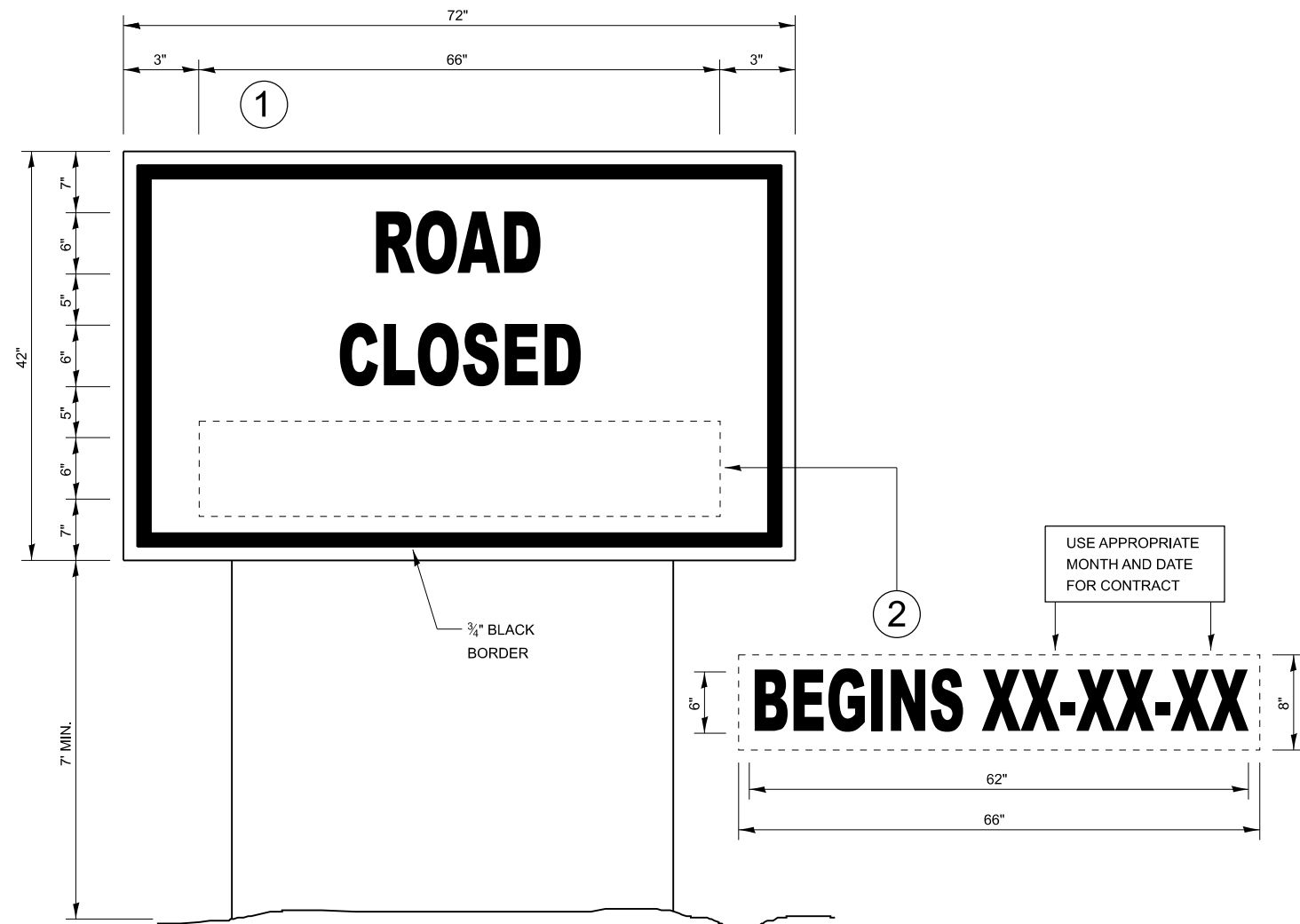


USER NAME = BWedemeier	DESIGNED -	REVISED -
PLOT SCALE = 0.16666633' / in.	DRAWN -	REVISED -
PLOT DATE = 3/21/2024	CHECKED -	REVISED -
	DATE -	REVISED -

**DEKALB COUNTY  
 HIGHWAY DEPARTMENT**

<b>CH 5 (GLIDDEN RD)    PAVEMENT MARKING PLAN</b>			
SCALE: H=50 V=5	SHEET 1	OF 1 SHEETS	STA. 89+00.00 TO STA. 102+00.00

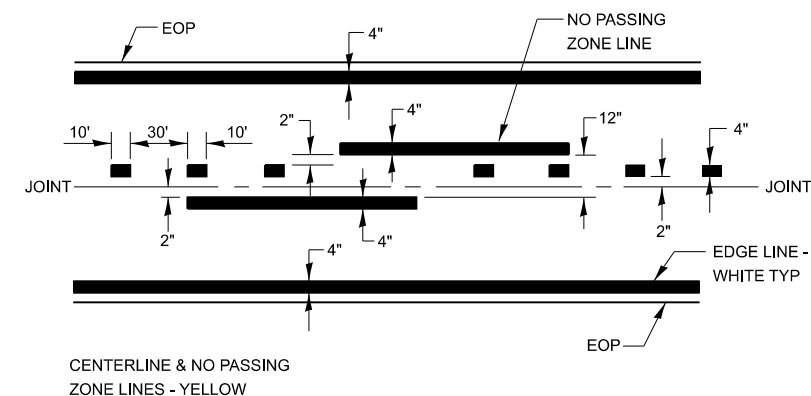
RT. NO.	SECTION	COUNTY	TOTAL SHEETS	SHEET NO.
CH 5	20-00272-00-5P	DEKALB	17	12
CONTRACT NO. 87866				
ILLINOIS FED. AID PROJECT				



## TEMPORARY INFORMATION SIGNING

### NOTES:

1. USE 6" D BLACK LETTERING ON FLUORESCENT ORANGE BACKGROUND.
2. ERECT SIGNS AT LOCATIONS IN ADVANCE OF THE "ROAD CONSTRUCTION AHEAD" SIGNS AS DIRECTED BY THE ENGINEER.
3. ERECT SIGN ① WITH INSTALLED PANEL ② A MINIMUM OF ONE WEEK PRIOR TO THE START OF THE ROAD CLOSURE.
4. REMOVE PANEL ② ON THAT DATE.
5. SEE SPECIAL PROVISION "TEMPORARY INFORMATION SIGNING" FOR ADDITIONAL INFORMATION.
6. WILL BE PAID FOR PER SQ FT AS "TEMPORARY INFORMATION SIGNING". EACH SIGN = 21 SQ FT AND THE DATE PANEL ② WILL NOT BE MEASURED SEPARATELY FOR PAYMENT.



## PAVEMENT MARKING

MODEL: Detail Sheet 1  
FILE NAME: V:\421801 - Glidden and Baseline design\CADD Sheets\0918\_01-sht-details.dgn



USER NAME = BWedemeier	DESIGNED -	REVISED -
PLOT SCALE = 0.16666633' / in.	DRAWN -	REVISED -
PLOT DATE = 3/21/2024	CHECKED -	REVISED -
	DATE -	REVISED -

DEKALB COUNTY  
HIGHWAY DEPARTMENT

CH 5 (GLIDDEN RD)  
SPECIAL DETAILS

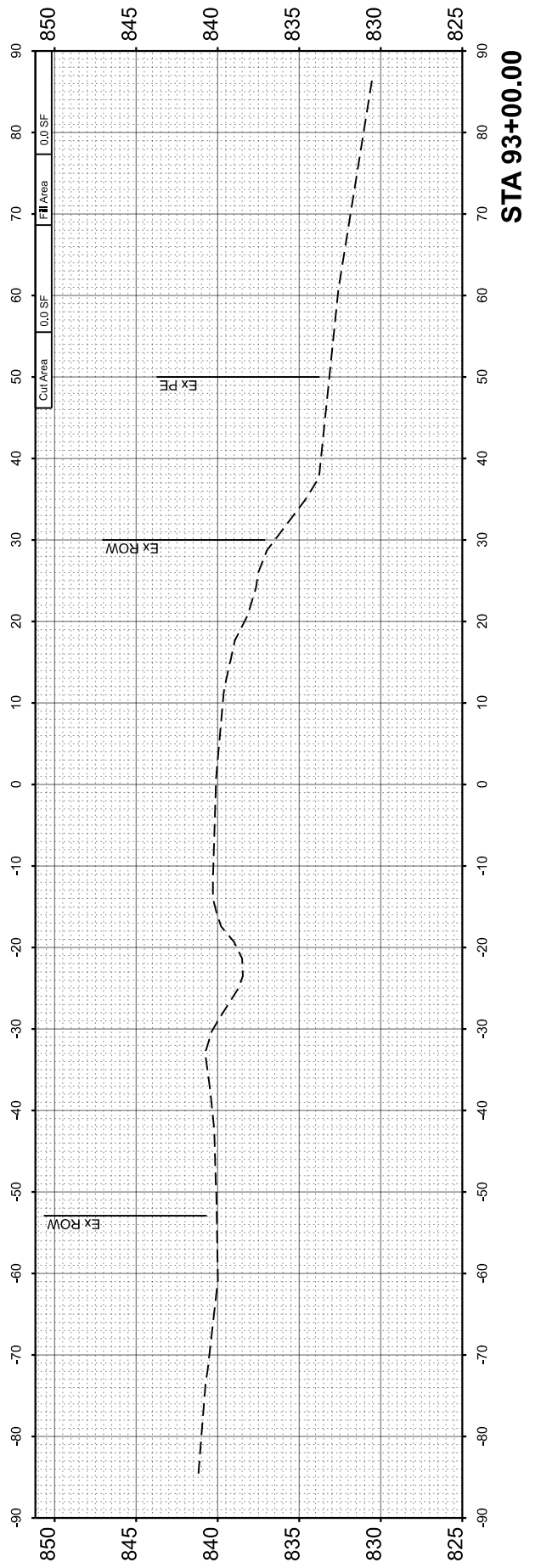
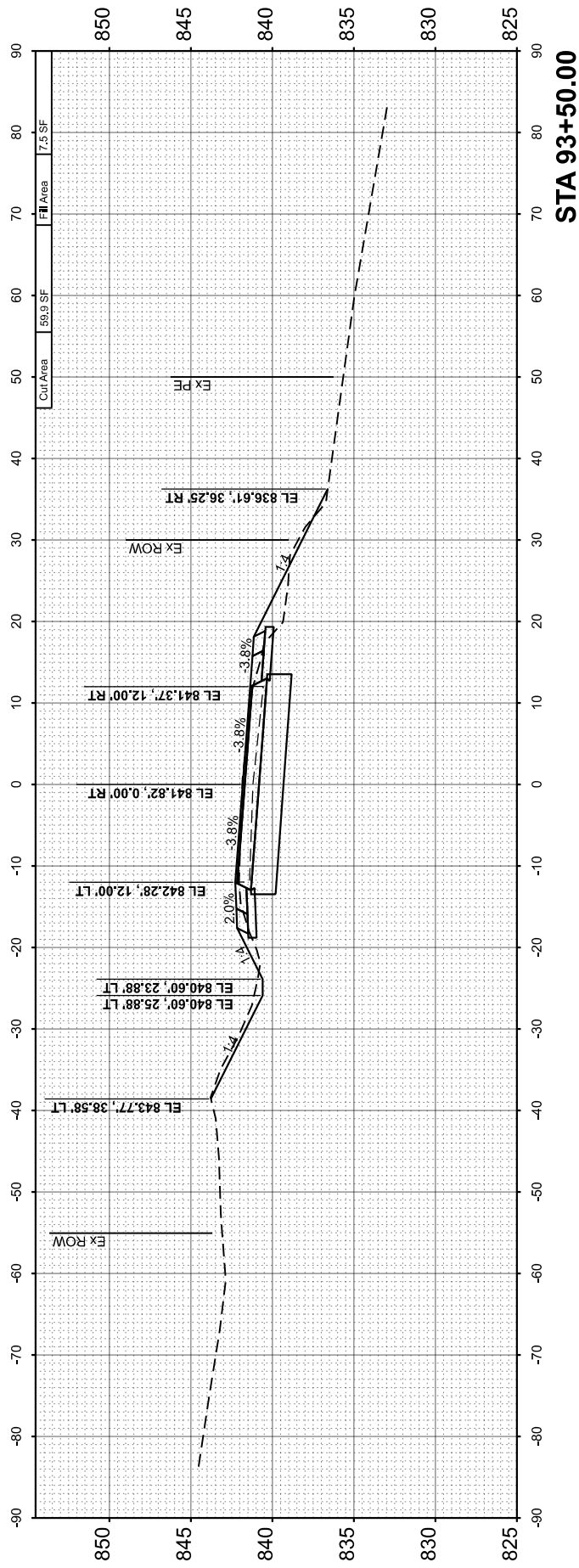
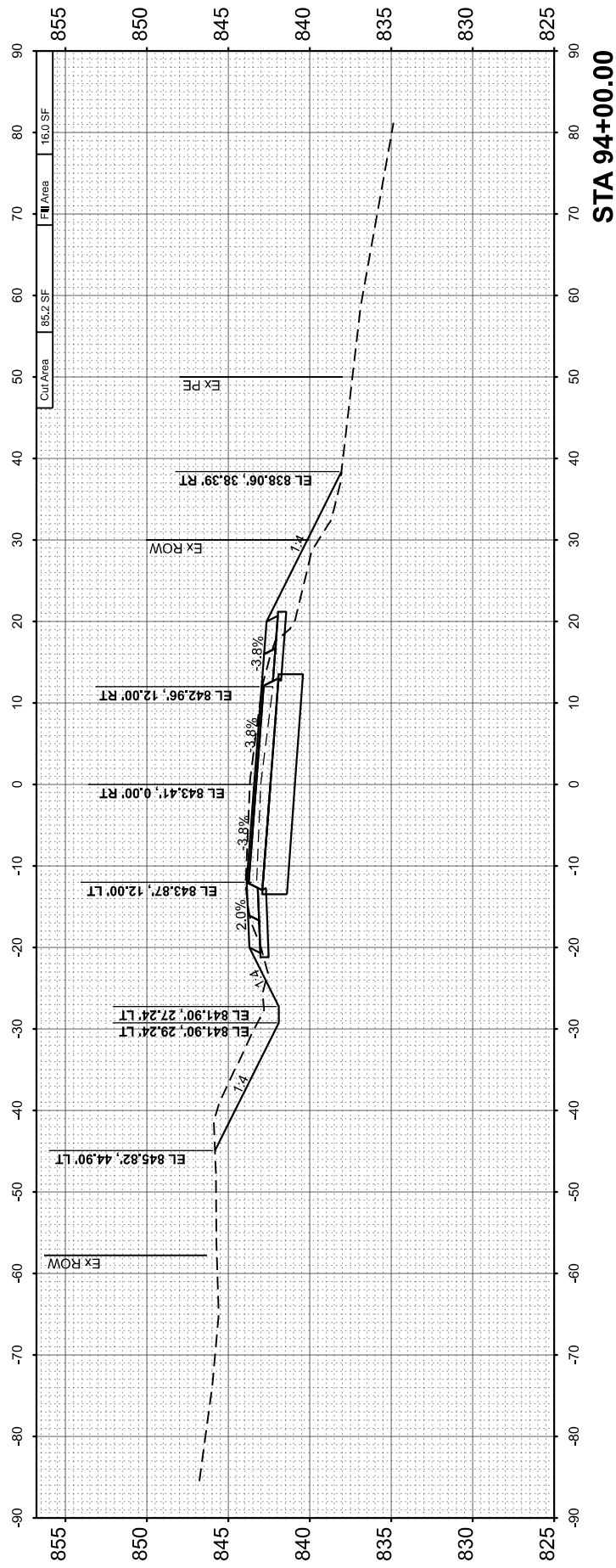
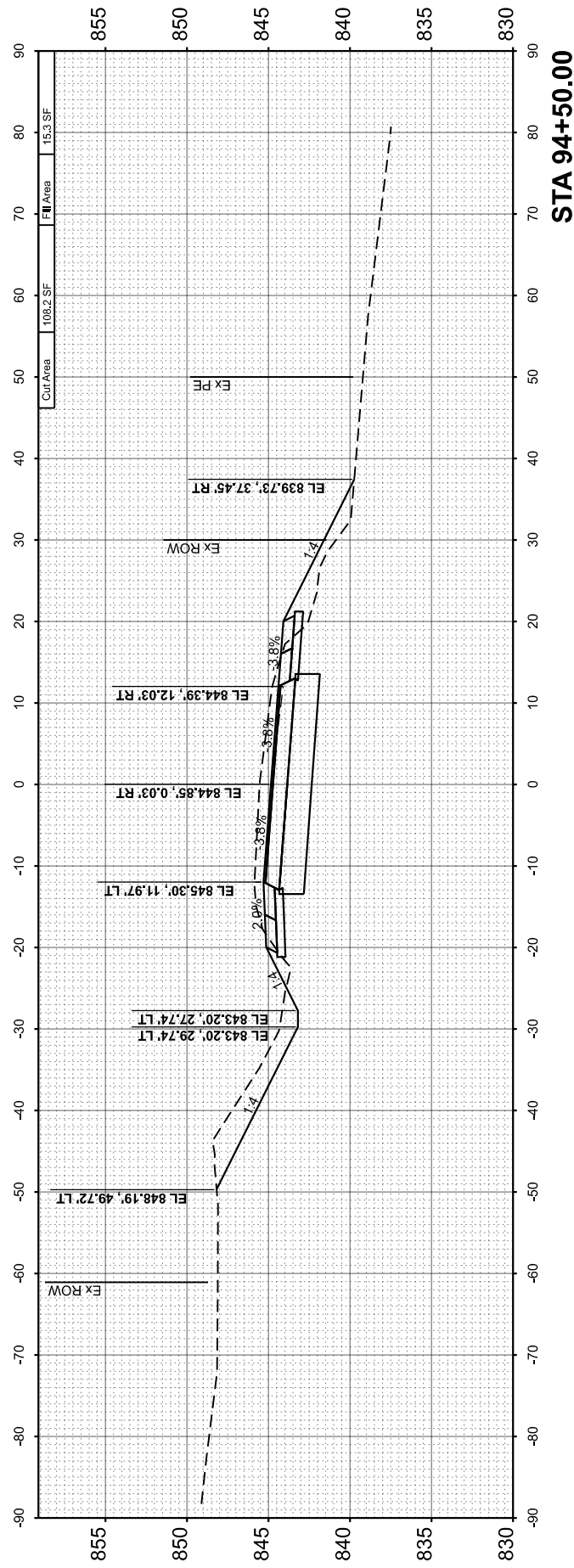
SCALE: N/A SHEET 1 OF 1 SHEETS STA. TO STA.

RT. NO.	SECTION	COUNTY	TOTAL SHEETS	SHEET NO.
CH 5	20-00272-00-5P	DEKALB	17	13
ILLINOIS FED. AID PROJECT			CONTRACT NO. 87866	

FINL SURVEY	SURVEYED	BY	DATE
NOTE BOOK	PLOTTED		
NO.	TEMPLATE		
	AREAS CHECKED		
	AREAS CHECKED		

ORIGINAL SURVEY	SURVEYED	BY	DATE
NOTE BOOK	PLOTTED		
NO.	TEMPLATE		
	AREAS CHECKED		
	AREAS CHECKED		

MODEL: P:\Glidden\_Altim - 93+00.00 (Sheet)  
 FILE NAME: V:\93+00 - Glidden and Baseline design\CADD Sheets\93+00.00.ctb



USER NAME	= BWedemeyer
DESIGNED	-
DRAWN	-
CHECKED	-
DATE	-
PLOT SCALE	= 0.16666633 / in.
PLOT DATE	= 3/21/2024

DESIGNED	-
DRAWN	-
CHECKED	-
DATE	-

REVISED	-
REVISED	-
REVISED	-
REVISED	-

**DEKALB COUNTY  
HIGHWAY DEPARTMENT**

**CH 5 (GLIDDEN RD)  
CROSS SECTIONS**

SCALE: H=10 V=5    SHEET 1    OF 4    SHEETS    STA. 93+00.00    TO STA. 94+50.00

RT. NO.	SECTION	COUNTY	TOTAL SHEETS	SHEET NO.
CH 5	20-00272-00-5P	DEKALB	17	14
CONTRACT NO. 87866				
ILLINOIS		FED. AID PROJECT		



FINL SURVEY	SURVEYED	BY	DATE
NOTE BOOK	PLOTTED		
NO.	TEMPLATE		
	AREAS CHECKED		
	AREAS CHECKED		

ORIGINAL SURVEY	SURVEYED	BY	DATE
NOTE BOOK	PLOTTED		
NO.	TEMPLATE		
	AREAS CHECKED		
	AREAS CHECKED		

MODEL: P:\Glidden\_Alt19 - 95+00.00 (Sheet)  
 FILE NAME: V:\391\CD - Glidden and Baseline design\CADD Sheets\95+00.00\cscx5.dgn



USER NAME = BWedemeyer  
 PLOT SCALE = 0.166666833' / in.  
 PLOT DATE = 3/21/2024

DESIGNED -  
 DRAWN -  
 CHECKED -  
 DATE -

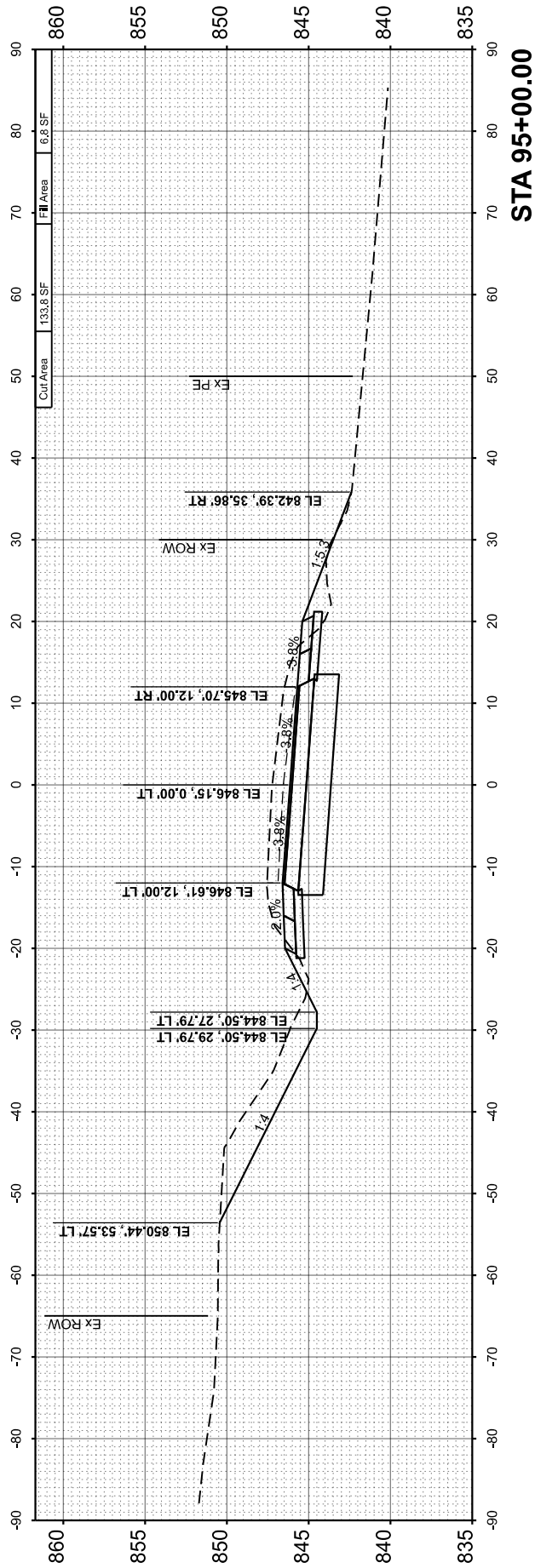
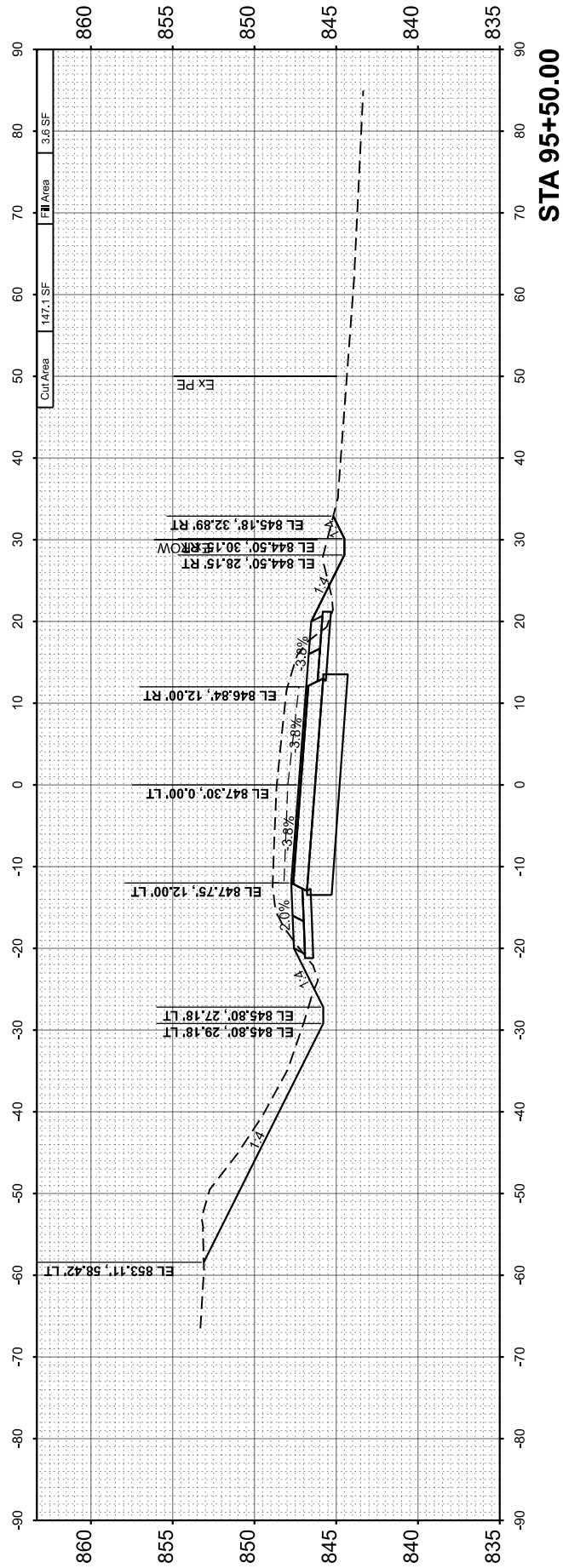
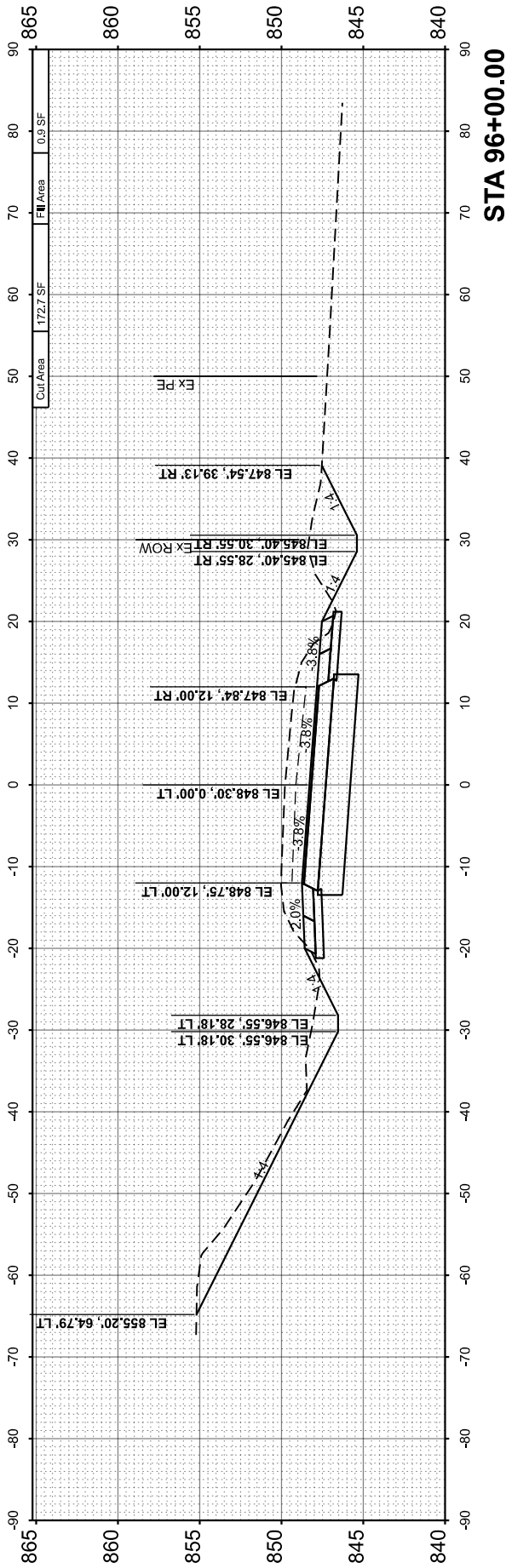
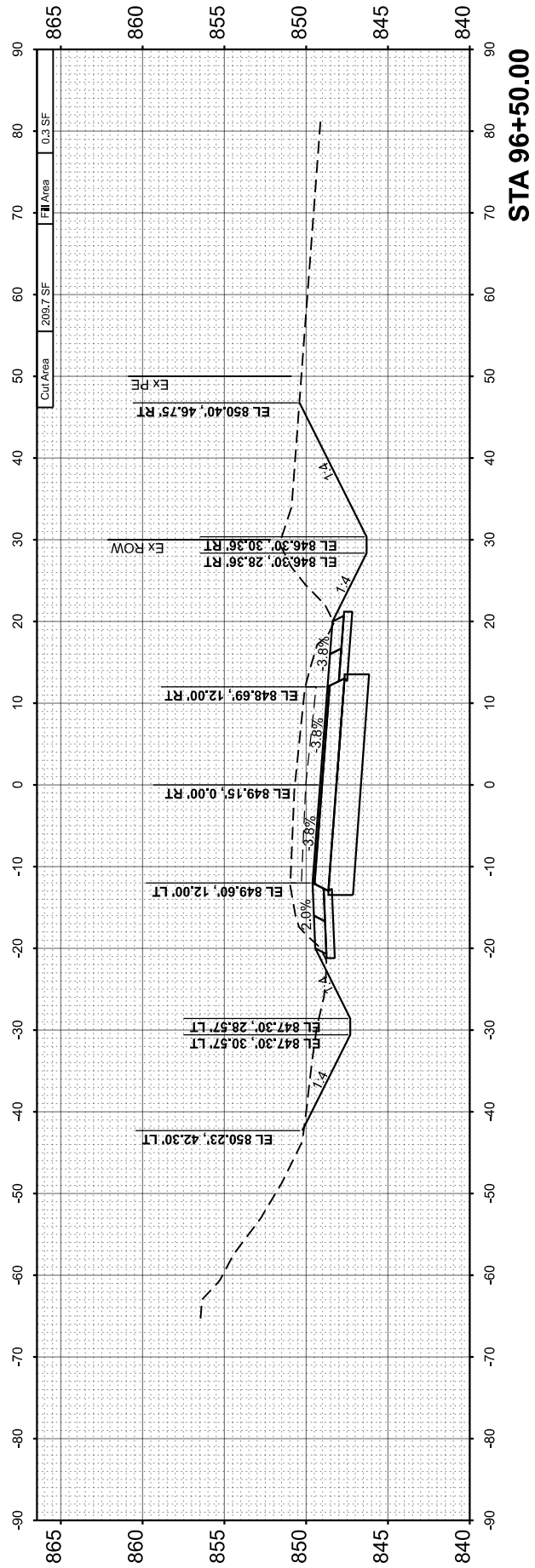
REVISED -  
 REVISED -  
 REVISED -  
 REVISED -

**DEKALB COUNTY  
 HIGHWAY DEPARTMENT**

**CH 5 (GLIDDEN RD)  
 CROSS SECTIONS**

SCALE: H=10 V=5    SHEET 2    OF 4    SHEETS    STA. 95+00.00    TO STA. 96+50.00

RT. NO.	SECTION	COUNTY	TOTAL SHEETS	SHEET NO.
CH 5	20-00272-00-5P	DEKALB	17	15
			CONTRACT NO. 87866	
			ILLINOIS   FED. AID PROJECT	



FINISH SURVEY	SURVEYED	BY	DATE
NOTE BOOK	PLOTTED		
NO.	AREAS CHECKED		
	AREAS CHECKED		

ORIGINAL SURVEY	SURVEYED	BY	DATE
NOTE BOOK	PLOTTED		
NO.	AREAS CHECKED		
	AREAS CHECKED		

MODEL: P:\Glidden\_Alt19 - 97+00.00 (Sheet)  
 FILE NAME: V:\321001 - Glidden and Baseline design\CADD Sheets\97+00.00.ctb



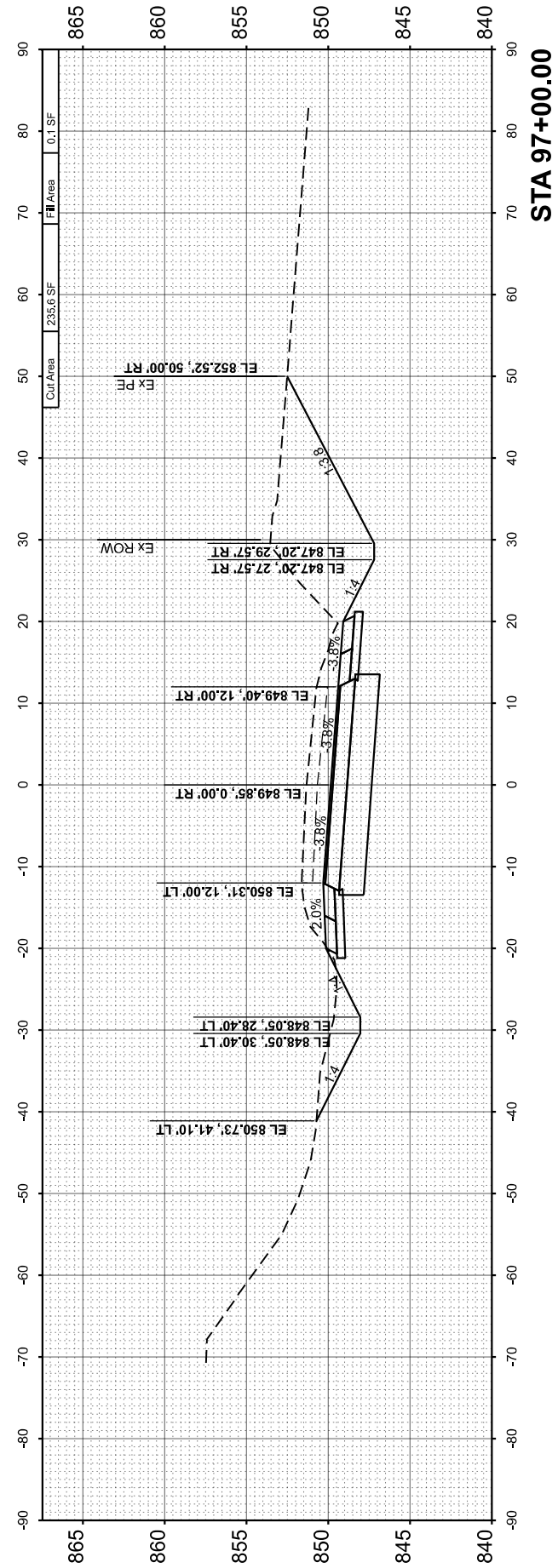
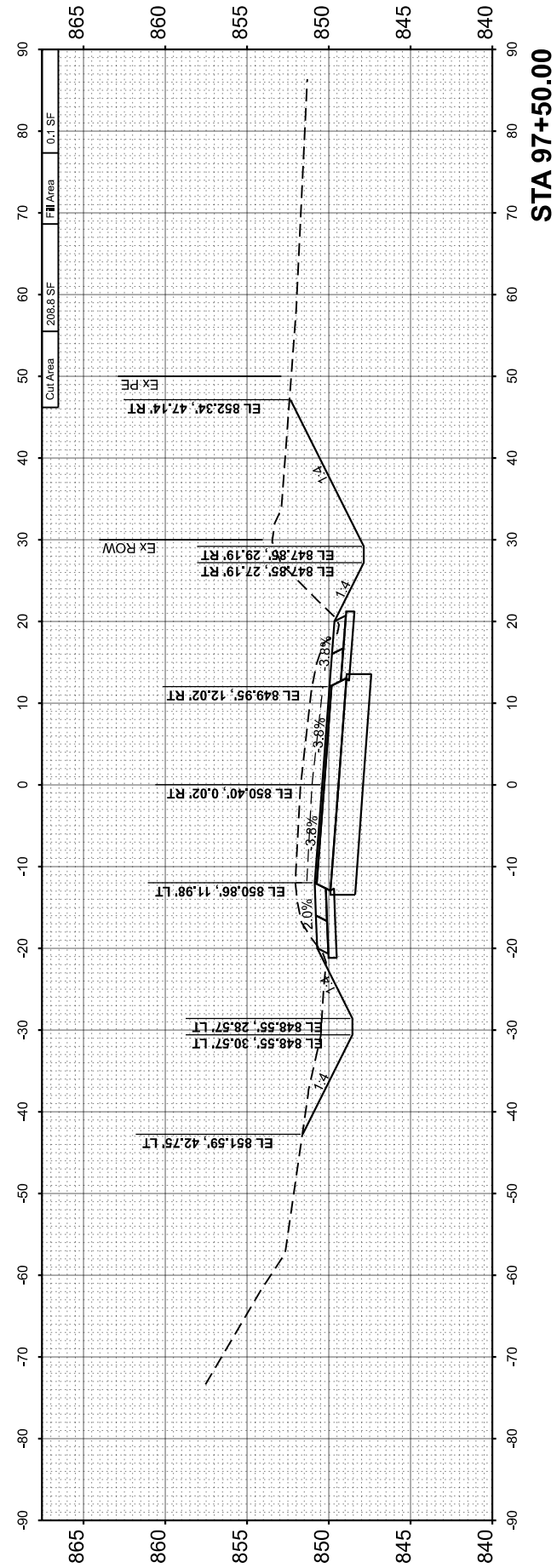
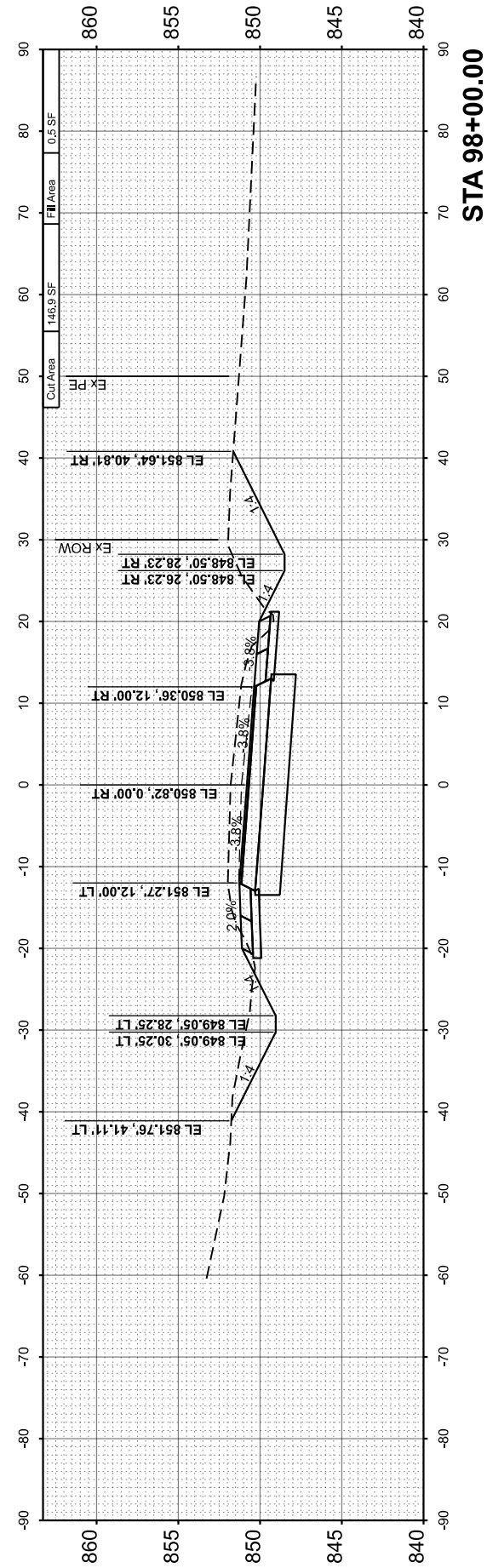
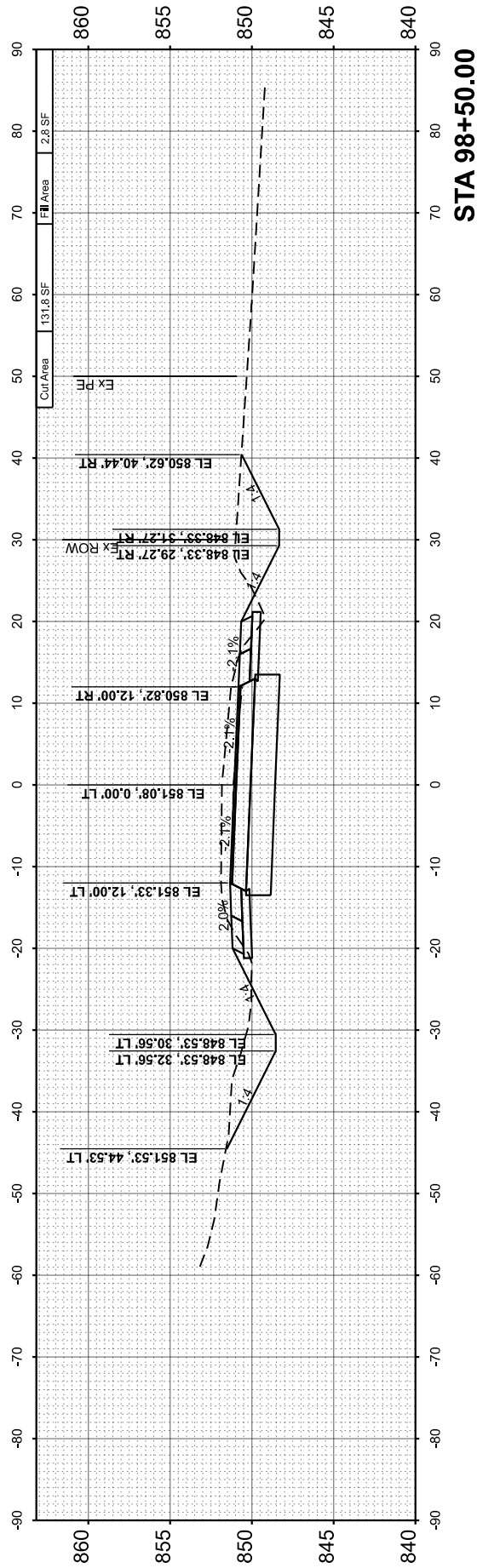
USER NAME = BWedemeyer	DESIGNED -	REVISED -
PLOT SCALE = 0.16666633' / in.	DRAWN -	REVISED -
PLOT DATE = 3/21/2024	CHECKED -	REVISED -
	DATE -	REVISED -

**DEKALB COUNTY  
HIGHWAY DEPARTMENT**

**CH 5 (GLIDDEN RD)  
CROSS SECTIONS**

SCALE: H=10 V=5    SHEET 3    OF 4    SHEETS    STA. 97+00.00    TO STA. 98+50.00

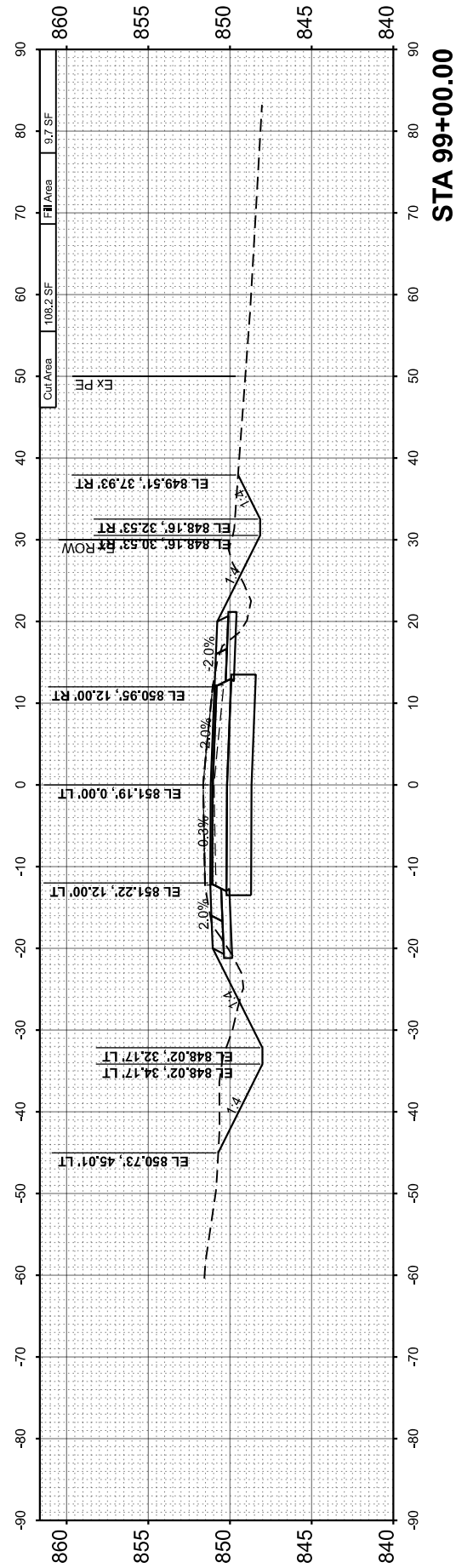
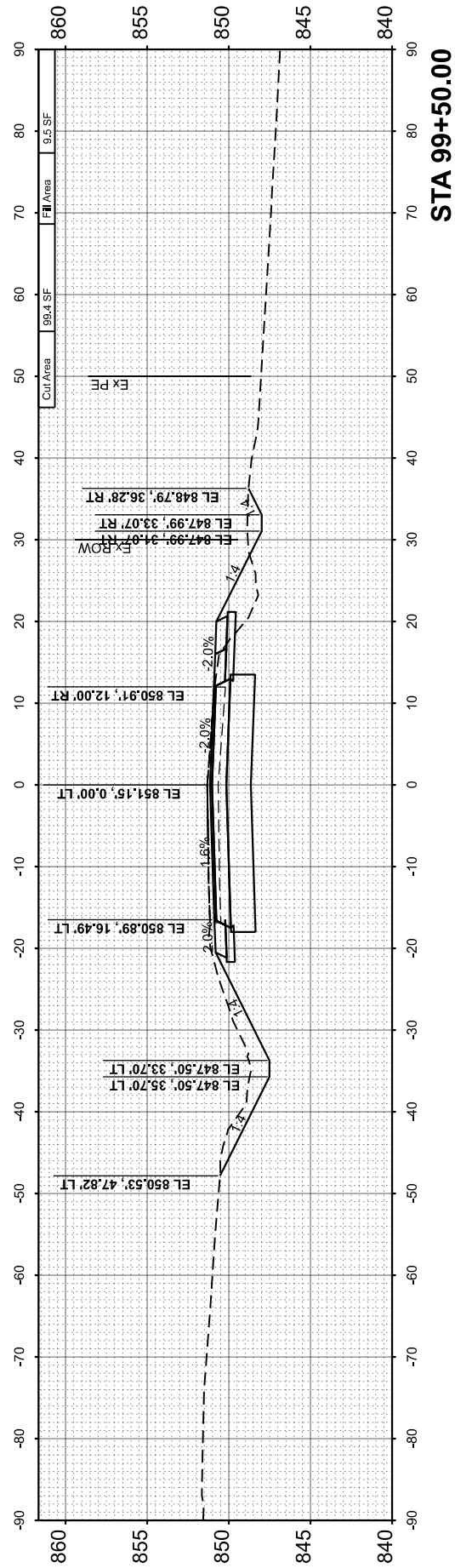
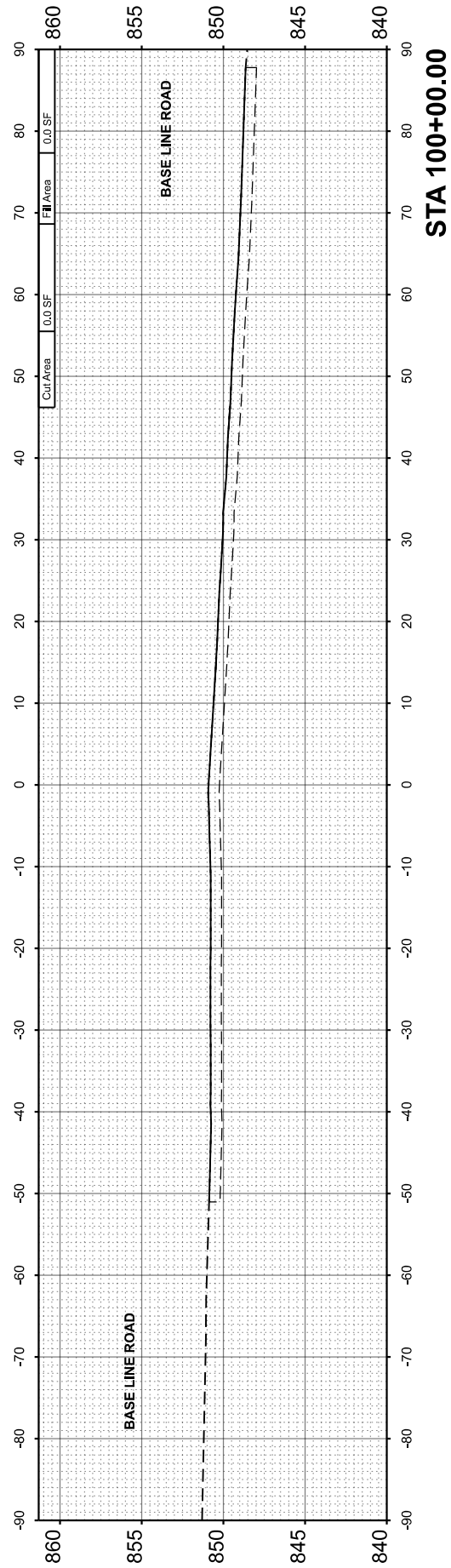
RT. NO.	SECTION	COUNTY	TOTAL SHEETS	SHEET NO.
CH 5	20-00272-00-5P	DEKALB	17	16
CONTRACT NO. 87866			ILLINOIS   FED. AID PROJECT	



FINISH SURVEY NO.	SURVEYED PLOTTED AREAS CHECKED	BY	DATE
NOTE BOOK	TEMPLATE		

ORIGINAL SURVEY NO.	SURVEYED PLOTTED AREAS CHECKED	BY	DATE
NOTE BOOK	TEMPLATE		

MODEL: P:\Glidden\_Alt\99+00.00 (Sheet)  
 FILE NAME: V:\321\001 - Glidden and Baseline design\CADD Sheets\99+00.00 sheet.dgn



USER NAME = BWedemeyer	DESIGNED -	REVISED -
PLOT SCALE = 0.16666633' / in.	DRAWN -	REVISED -
PLOT DATE = 3/21/2024	CHECKED -	REVISED -
	DATE -	REVISED -

**DEKALB COUNTY  
HIGHWAY DEPARTMENT**

**CH 5 (GLIDDEN RD)  
CROSS SECTIONS**

SCALE: H=10 V=5 SHEET 4 OF 4 SHEETS STA. 99+00.00 TO STA. 100+00.00

ROUTE NO. CH 5	SECTION 20-00272-00-5P	COUNTY DEKALB	TOTAL SHEETS 17	SHEET NO. 17
CONTRACT NO. 87866			ILLINOIS FED. AID PROJECT	