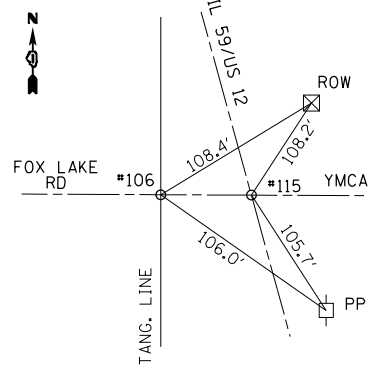
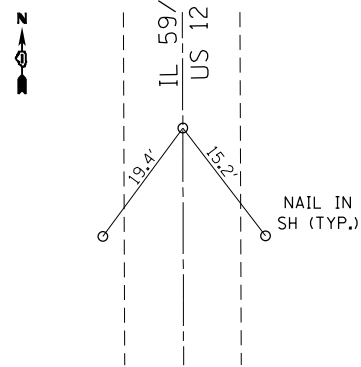


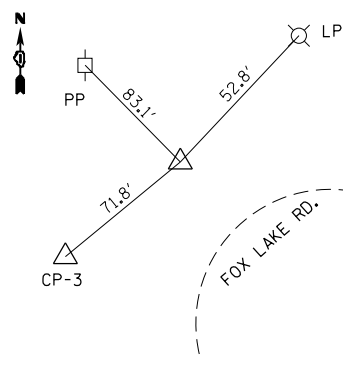
PT #103
STA. 477+07.27



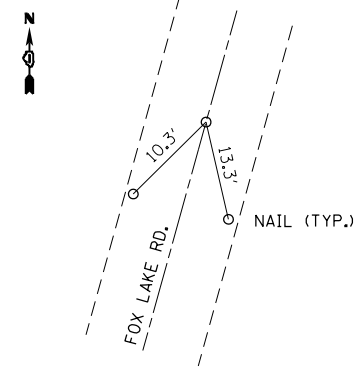
PT #106
&
PT #115



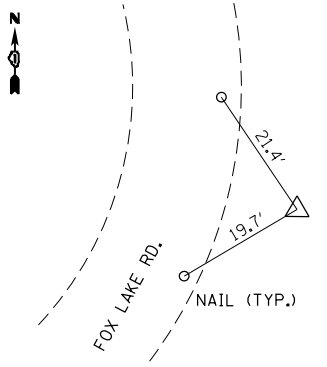
PT #100
STA. 521+97.40



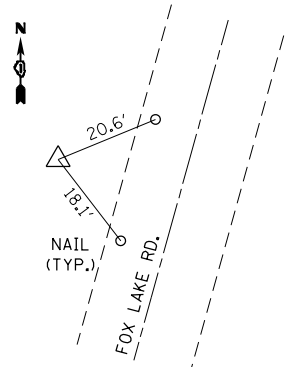
PT #108
P.I.



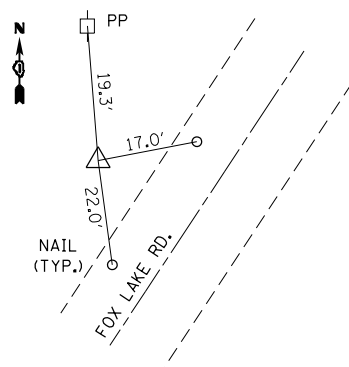
PT #112
STA. 180+64.65



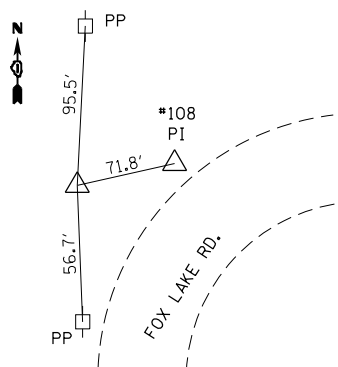
PT #109
PI



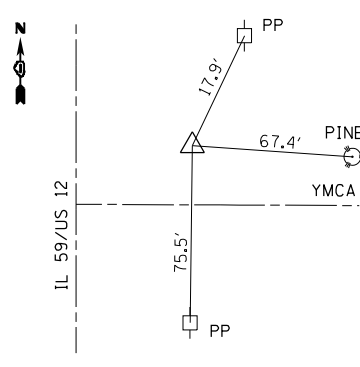
CP-1



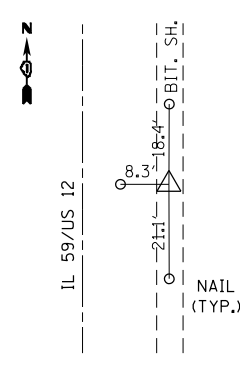
CP-2



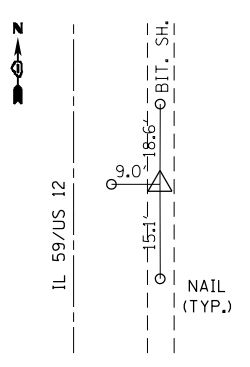
CP-3



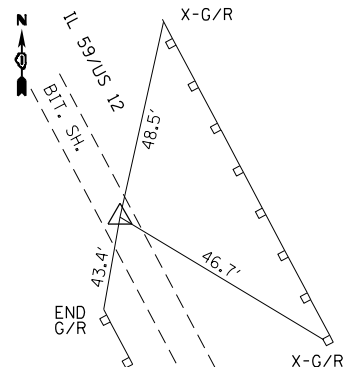
CP-4



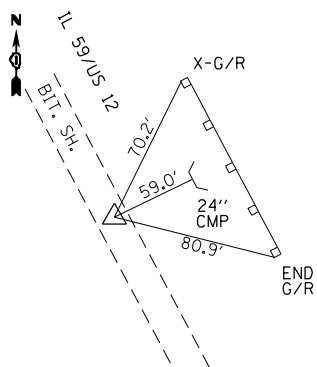
CP-5



CP-6



CP-7



CP-8

FILE NAME =	USER NAME = windot	DESIGNED -	REVISED -
c:\pwork\work\windot\windot\d0172386\p169000\sh-ATB.dgn		DRAWN -	REVISED -
	PLOT SCALE = 200.0000' / in.	CHECKED -	REVISED -
\$MODELNAME\$	PLOT DATE = 10/19/2012	DATE -	REVISED -

**STATE OF ILLINOIS
DEPARTMENT OF TRANSPORTATION**

**ALIGNMENT, TIES AND BENCHMARKS
IL. RTE. 59/U.S. RTE. 12 AT FOX LAKE RD.**

SCALE: 1"=100' SHEET 2 OF 2 SHEETS STA. TO STA.

F.A.P. RTE.	SECTION	COUNTY	TOTAL SHEETS	SHEET NO.
334	106N-1	LAKE	39	10
CONTRACT NO. 60T50				
ILLINOIS FED. AID PROJECT				