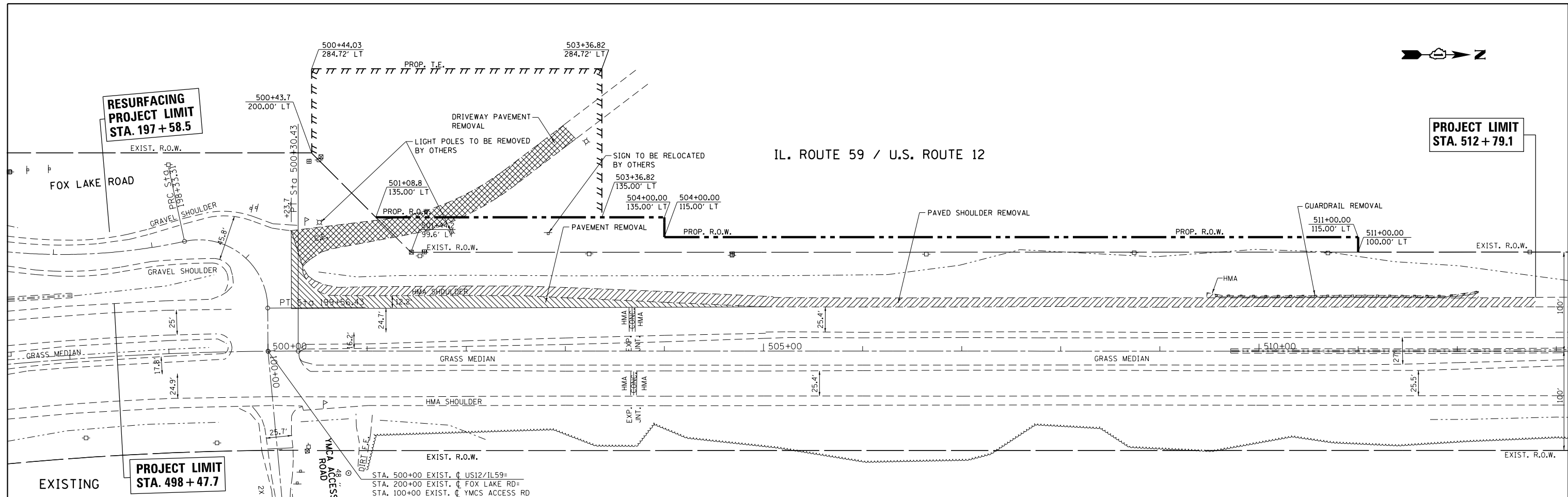


IL. ROUTE 59 / U.S. ROUTE 12

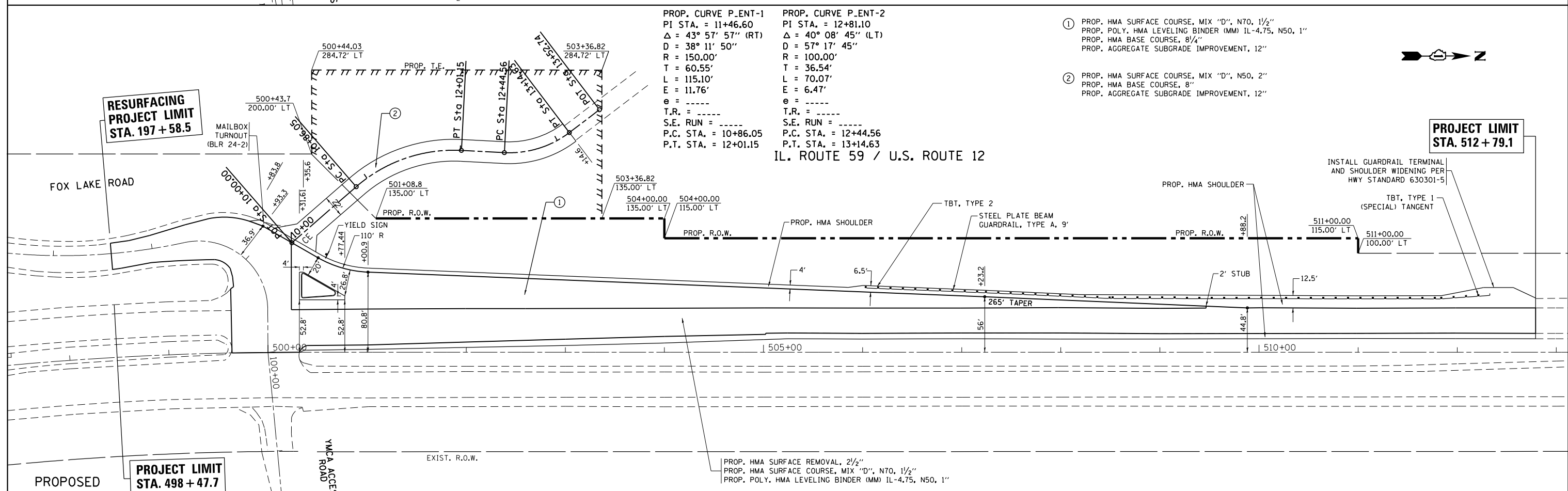


PROP. CURVE P-ENT-1  
 PI STA. = 11+46.60  
 $\Delta = 43^\circ 57' 57''$  (RT)  
 D = 38° 11' 50"  
 R = 150.00'  
 T = 60.55'  
 L = 115.10'  
 E = 11.76'  
 $\theta = \dots$   
 T.R. = \dots  
 S.E. RUN = \dots  
 P.C. STA. = 10+86.05  
 P.T. STA. = 12+01.15

PROP. CURVE P-ENT-2  
 PI STA. = 12+81.10  
 $\Delta = 40^\circ 08' 45''$  (LT)  
 D = 57° 17' 45"  
 R = 100.00'  
 T = 36.54'  
 L = 70.07'  
 E = 6.47'  
 $\theta = \dots$   
 T.R. = \dots  
 S.E. RUN = \dots  
 P.C. STA. = 12+44.56  
 P.T. STA. = 13+14.63

- ① PROP. HMA SURFACE COURSE, MIX "D", N70, 1 1/2"  
 PROP. POLY. HMA LEVELING BINDER (MM) IL-4.75, N50, 1"  
 PROP. HMA BASE COURSE, 8 1/4"  
 PROP. AGGREGATE SUBGRADE IMPROVEMENT, 12"
- ② PROP. HMA SURFACE COURSE, MIX "D", N50, 2"  
 PROP. HMA BASE COURSE, 8"  
 PROP. AGGREGATE SUBGRADE IMPROVEMENT, 12"

IL. ROUTE 59 / U.S. ROUTE 12



PROP. HMA SURFACE REMOVAL, 2 1/2"  
 PROP. HMA SURFACE COURSE, MIX "D", N70, 1 1/2"  
 PROP. POLY. HMA LEVELING BINDER (MM) IL-4.75, N50, 1"

FILE NAME =  
 USER NAME = windet  
 DRAWN -  
 PLOT SCALE = 100.0000' / in.  
 PLOT DATE = 10/19/2012

DESIGNED -  
 DRAWN -  
 CHECKED -  
 DATE -

REVISED -  
 REVISED -  
 REVISED -  
 REVISED -

STATE OF ILLINOIS  
 DEPARTMENT OF TRANSPORTATION

ROADWAY PLAN  
 U.S ROUTE 12 /IL. ROUTE 59 AT FOX LAKE RD.  
 SCALE: 1"=50'  
 SHEET OF SHEETS STA. TO STA.

F.A.P. RTE.	SECTION	COUNTY	TOTAL SHEETS	SHEET NO.
334	106N-1	LAKE	39	11
CONTRACT NO. 60T50				
ILLINOIS FED. AID PROJECT				