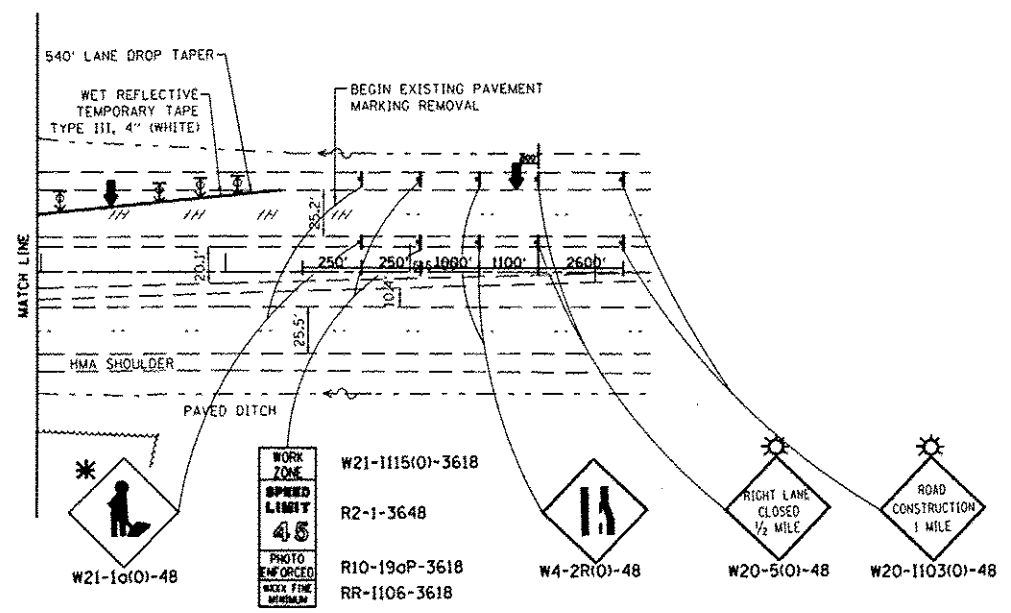


- LEGEND**
- ⊕ TYPE III BARRICADE WITH TWO (2) FLASHING LIGHTS
 - ↑ SIGN
 - ○ ○ DRUMS WITH STEADY BURN MONODIRECTIONAL LIGHT
50' C-C TANGENTS
25' C-C LANE SHIFTS & TAPERS
10' C-C RADI (TYP)
 - FLASHING ARROW BOARD
 - ↑ DIRECTION INDICATOR BARRICADE WITH STEADY BURN MONODIRECTIONAL LIGHT
 - ▨ WORK AREA



- G20-1103(O)-3660 END WORK ZONE SPEED LIMIT
- M6-1(O)-2115 ROAD CONSTRUCTION AHEAD
- W20-1103(O)-48 ROAD CONSTRUCTION AHEAD
- W20-1103(O)-36 ROAD CONSTRUCTION AHEAD
- R3-8 ONLY

- * MUST BE REMOVED WHEN WORKERS ARE NOT PRESENT
- W21-1(O)-48 WORK ZONE SPEED LIMIT 45
- W21-1115(O)-3618
- R2-1-3648
- R10-19OP-3618
- RR-1106-3618
- W4-2R(O)-48
- W20-5(O)-48
- W20-1103(O)-48

FILE NAME :	USER NAME : midyja	DESIGNED -	REVISED -	STATE OF ILLINOIS DEPARTMENT OF TRANSPORTATION	SUGGESTED STAGING AND TRAFFIC CONTROL STAGE II US 12/IL 59 AT FOX LAKE RD			P.A.P. R.T.E.	SECTION	COUNTY	TOTAL SHEETS	SHEET NO.	
Default	Plot SCALE = 1/8" = 100'	DRAWN -	REVISED -		SCALE:	SHEET	OF	SHEETS	STA.	TO STA.	LAKE	39	15
	PLOT DATE = 11/27/2012	CHECKED -	REVISED -										
		DATE -	REVISED -										

Rev. Sheet 1-3-13