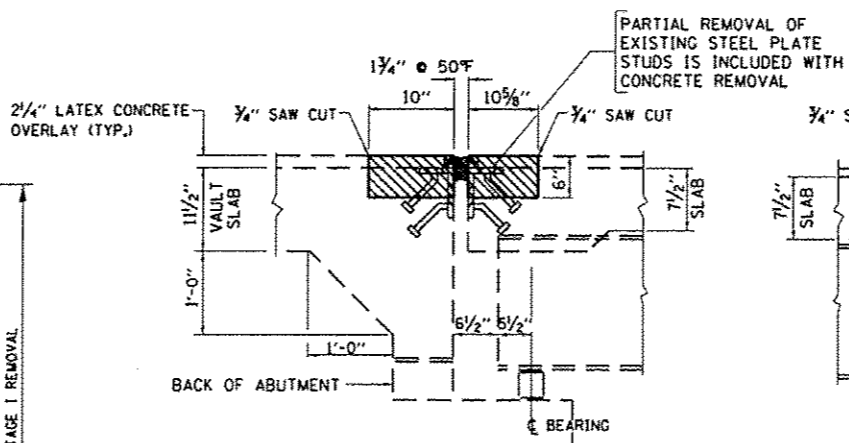
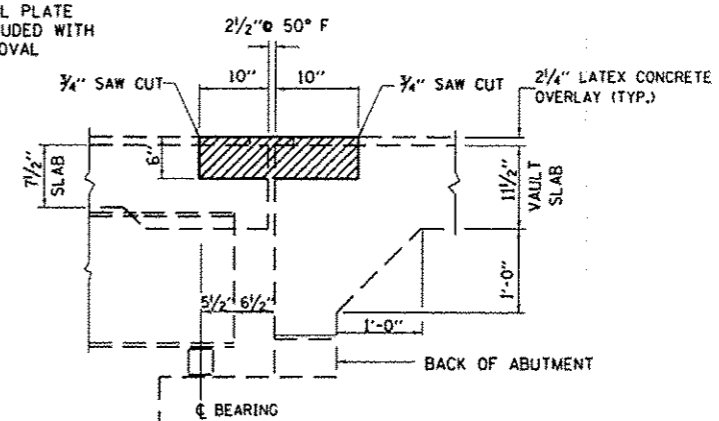


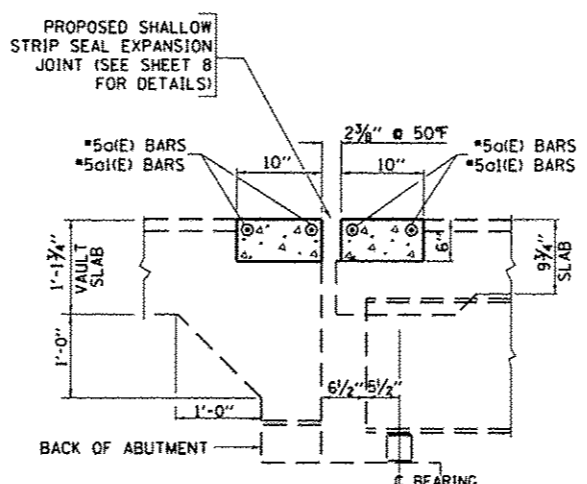
PLAN
SOUTH ABUTMENT
(NORTH ABUTMENT SLAB SIMILAR)



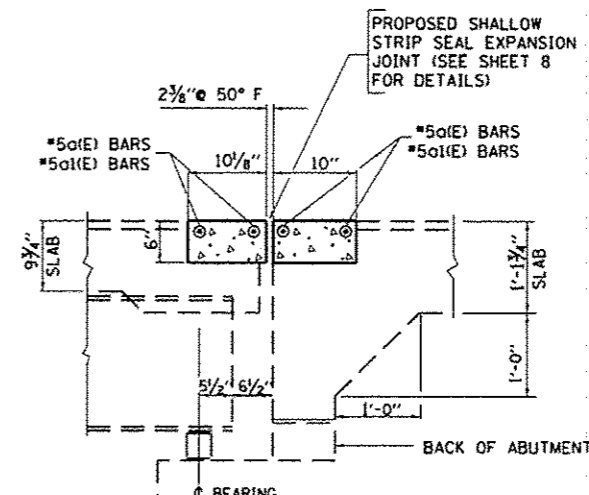
EXISTING EXPANSION JOINT AT SOUTH ABUTMENT



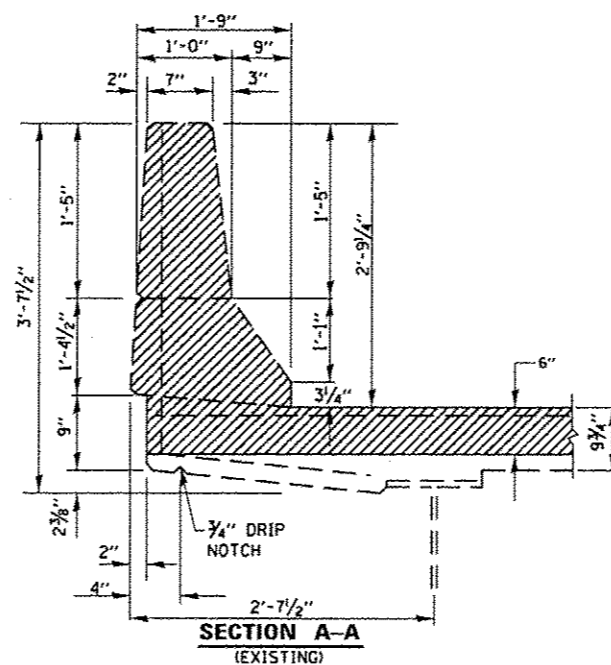
EXISTING EXPANSION JOINT AT NORTH ABUTMENT



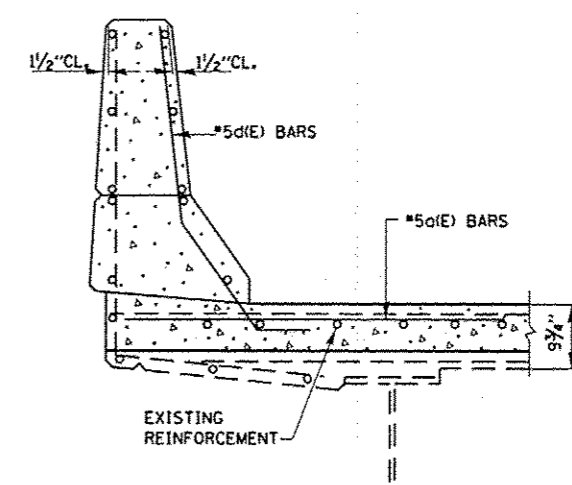
PROPOSED EXPANSION JOINT AT SOUTH ABUTMENT



PROPOSED EXPANSION JOINT AT NORTH ABUTMENT



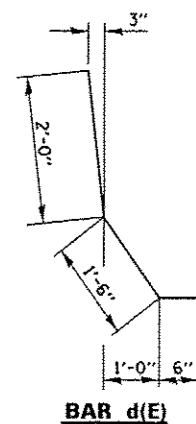
SECTION A-A
(EXISTING)



SECTION A-A
(PROPOSED)

BILL OF MATERIALS

BAR	NO.	SIZE	LENGTH	SHAPE	
d(E)	16	#5	19'-10"		
d(E)	16	#5	15'-4"		
d(E)	32	#5	4'-0"		
REINFORCEMENT BARS (EPOXY COATED)				POUND	727
CONCRETE REMOVAL				CU.YD.	6.0
CONCRETE SUPERSTRUCTURE				CU.YD.	6.0
BAR SPLICERS				EACH	16



BAR d(E)

LEGEND:

CONCRETE REMOVAL

FILE NAME: a:\pr-work\p\dot\przanowski\0318665	USER NAME: przanowskirb	DESIGNED: -	REVISED: -
0141412-shl.p2n.dgn	0141412-shl.p2n.dgn	DRAWN: -	REVISED: -
PLOT SCALE: 99.9998 / in.		CHECKED: -	REVISED: -
PLOT DATE: 1/28/2013		DATE: -	REVISED: -

STATE OF ILLINOIS
DEPARTMENT OF TRANSPORTATION

U.S. 41 OVER DEERPATH ROAD
TRANSVERSE EXPANSION JOINT DETAILS
S.N. 049-0033

F.A.P. RTE. 346	SECTION 1305-(112)	COUNTY LAKE	TOTAL SHEETS 15	SHEET NO. 6
SCALE: SHEET OF SHEETS STA. TO STA.				CONTRACT NO. 60T65
ILLINOIS FED. AID PROJECT				