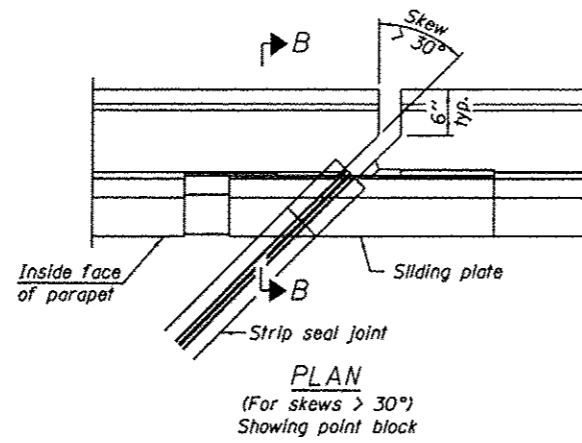
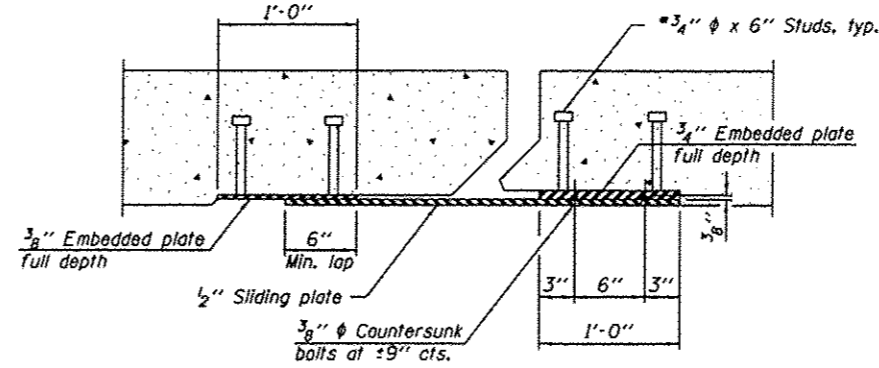


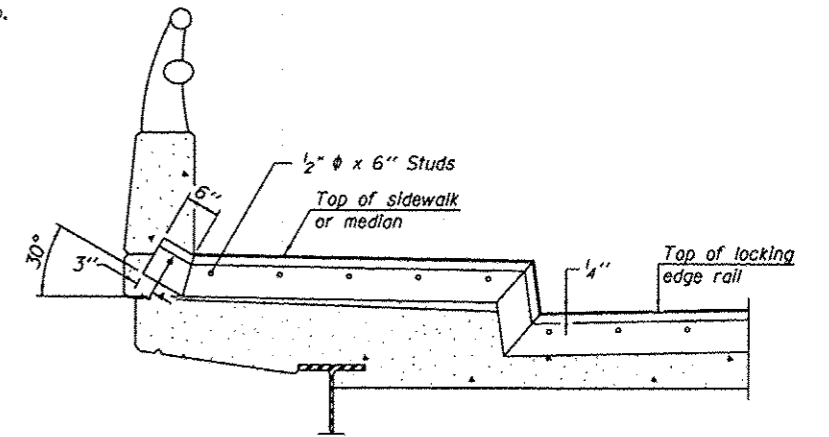
PLAN  
(For skews  $\leq 30^\circ$ )



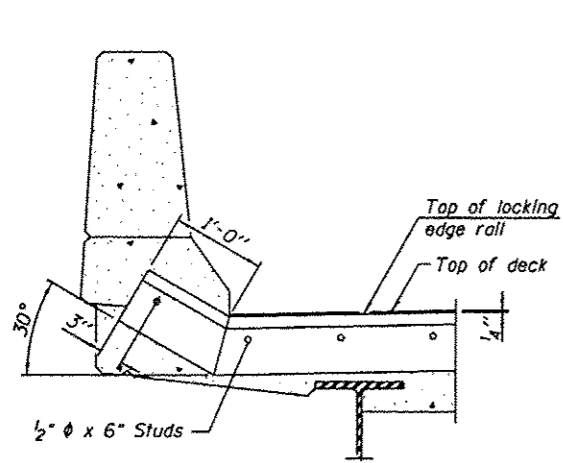
PLAN  
(For skews  $> 30^\circ$ )  
Showing point block



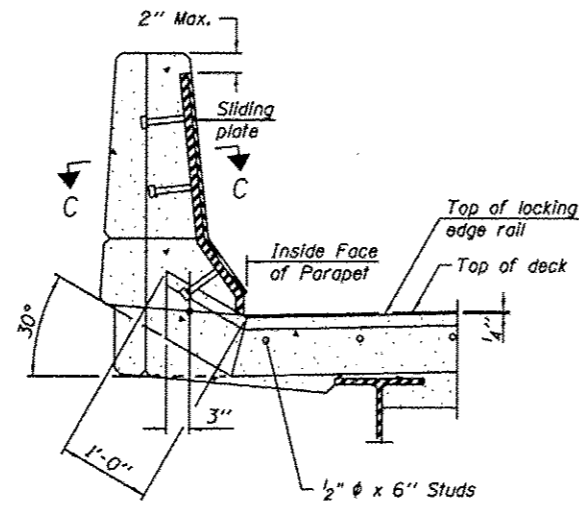
SECTION C-C



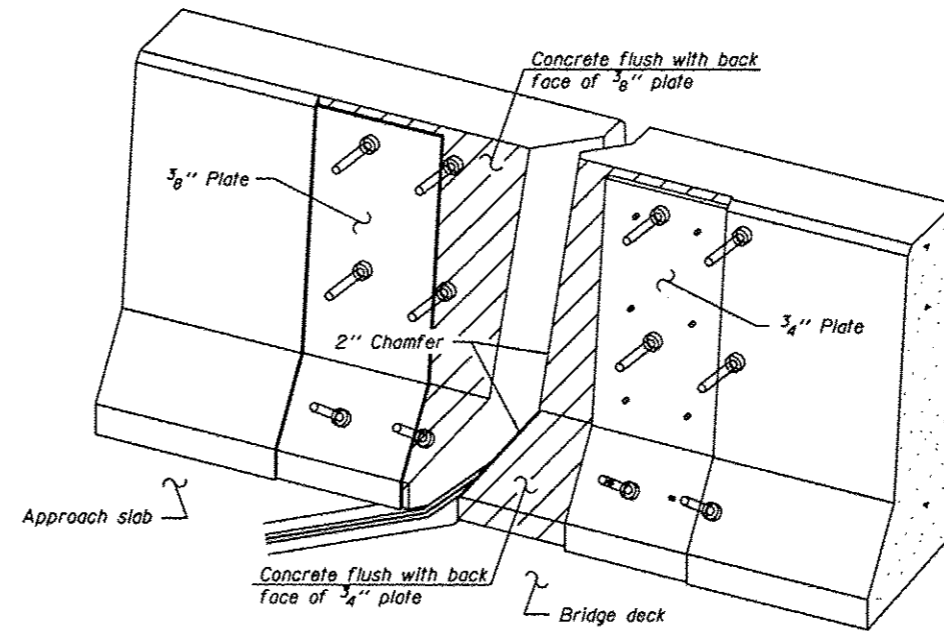
TYPICAL END TREATMENT  
AT SIDEWALK OR MEDIAN  
Shorter plates with a single row of studs at 12" cts. may be necessary on medians which are shallower than 9". See manufacturer's recommendation.



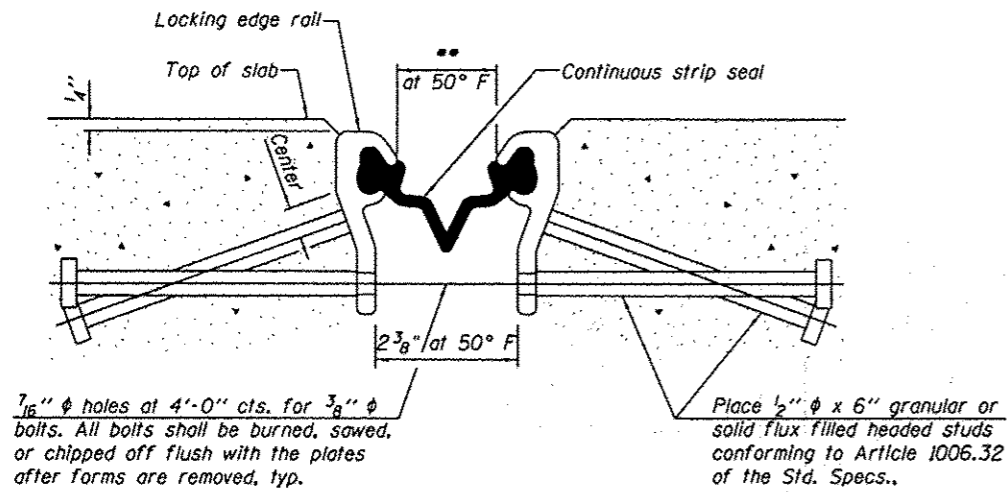
SECTION A-A



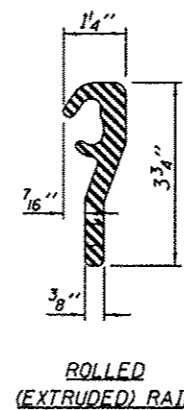
SECTION B-B



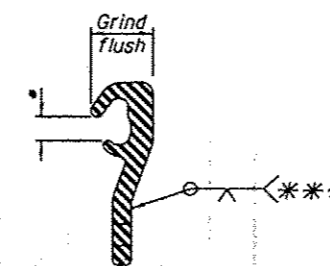
TRIMETRIC VIEW  
(Showing back plates only)



SECTION THRU STRIP SEAL JOINT  
FOR OVERLAY OVER DECK BEAMS



LOCKING EDGE RAIL



LOCKING EDGE RAIL SPLICE

NOTES:

The strip seal shall be made continuous and shall have a minimum thickness of  $1/4$ ". The configuration of the strip seal shall match the configuration of the Locking Edge Rails. Open or "Welded" strip seal gland configurations are not permitted. The gland shall be sized for maximum rated movement of 4 inches.

The height and thickness of the Locking Edge Rails shown are minimum dimensions. The actual configuration of the Locking Edge Rails and matching strip seal may vary from manufacturer to manufacturer. Flanged edge rails will not be allowed.

The inside of the Locking Edge Rail groove shall be free of weld residue. Locking Edge Rails may be spliced at slope discontinuities and stage construction joints.

The manufacturer's recommended installation methods shall be followed. All steel components shall be galvanized after fabrication according to Article 520.03 of the Standard Specifications.

Maximum space between rail segments at stage lines shall be  $3/16$ ", sealed with a suitable sealant. joints in Rails within 10 Ft. of curbs shall be welded.

BILL OF MATERIAL

Item	Unit	Total
Preformed Joint Strip Seal	Foot	276

- \* Omit weld at seal opening.
- \*\* The minimum dimension shall be  $1/2$ " for installation purposes.
- \*\*\* Back gouge not required if complete joint penetration is verified by mock-up.

FILE NAME :	USER NAME : pyrzanawskib	DESIGNED - MVT	REVISED -	STATE OF ILLINOIS DEPARTMENT OF TRANSPORTATION	U.S. 41 OVER DEERPATH ROAD PREFORMED JOINT STRIP SEAL S.N. 049-0033	F.A.P. RTE. 346	SECTION 1305-1(12)	COUNTY LAKE	TOTAL SHEETS 15	SHEET NO. 8		
0:\pwork\pedit\pyrzanawskib\08318685	D:\41412-sht\plan.dgn	DRAWN - MVT	REVISED -			SCALE:	SHEET NO. OF SHEETS	STA. TO STA.	CONTRACT NO. 60T65			
	PLOT SCALE = 100.0000' / in.	CHECKED -	REVISED -						ILLINOIS FED. AID PROJECT			
	PLOT DATE = 1/28/2013	DATE - 12-20-2011	REVISED -									