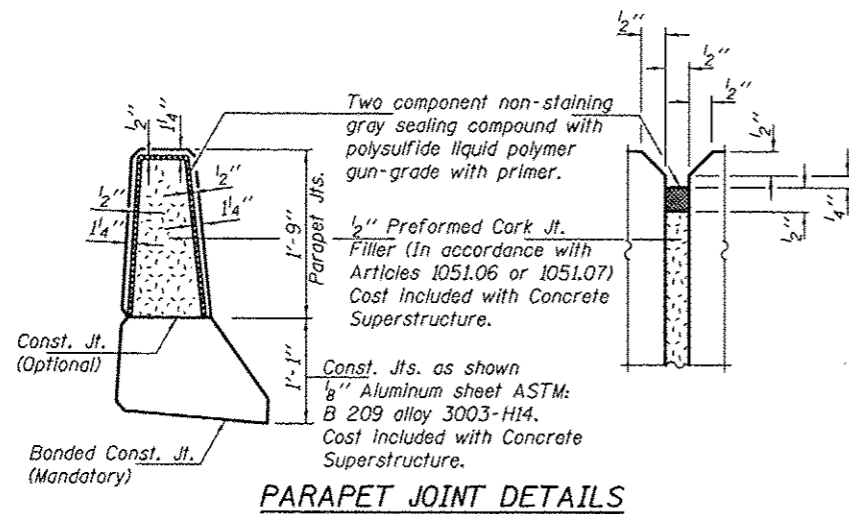
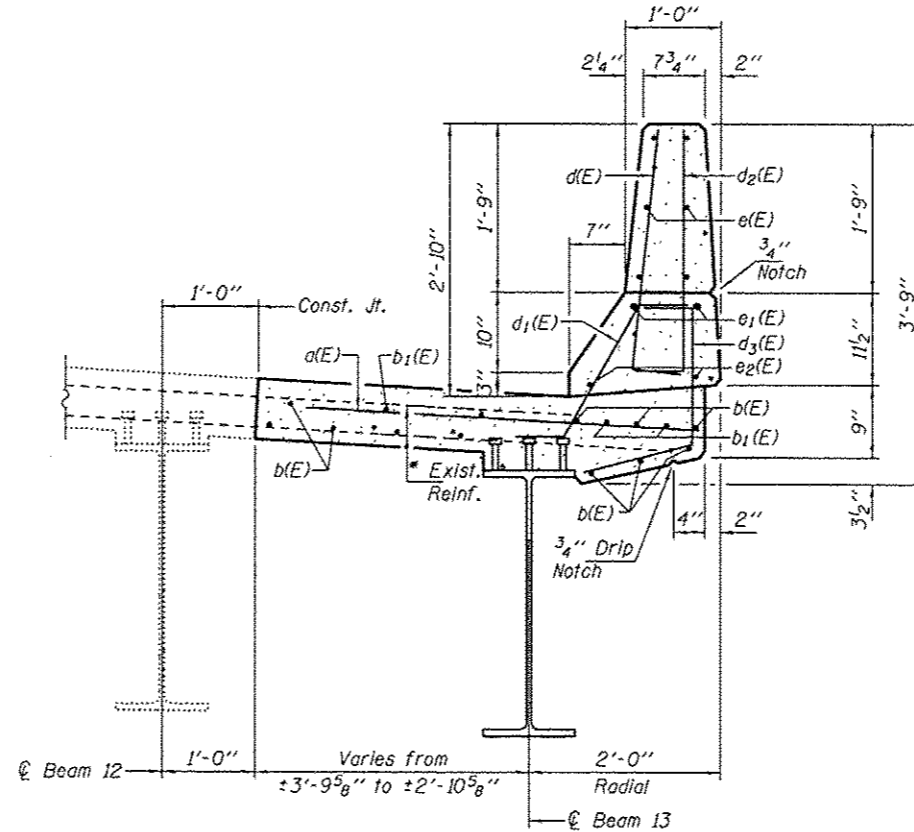


**INSIDE ELEVATION OF PARAPET**  
(Looking North)



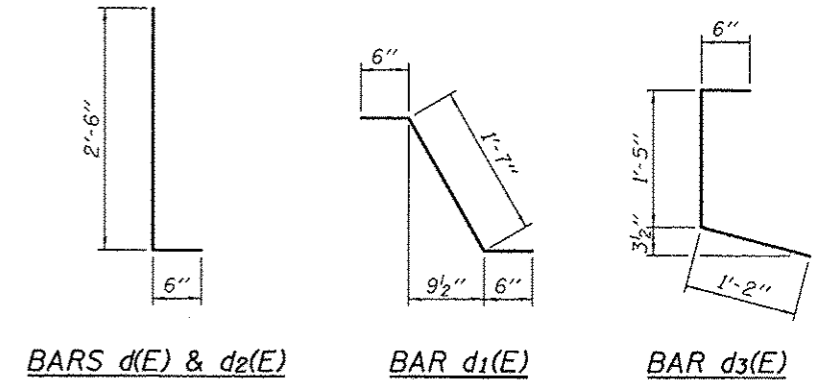
**PARAPET JOINT DETAILS**



**SECTION A-A**  
(Looking West)

Match existing cross slope.

\* Existing reinforcement extending into the removal area shall be cleaned, straightened and incorporated into the new construction. Any reinforcement bars that are damaged during concrete removal shall be replaced with an approved bar splicer or anchorage system. Cost shall be included with Concrete Removal.



**MIN. BAR LAPS**  
(Parapet)

- #4 bar = 2'-1"
- #5 bar = 2'-7"
- #8 bar = 5'-5"

**BILL OF MATERIAL**

Bar	No.	Size	Length	Shape	
d(E)	56	#6	4'-0"	┌	
b(E)	28	#5	28'-9"	┌	
b1(E)	12	#6	6'-0"	┌	
d(E)	61	#5	3'-0"	┌	
d1(E)	61	#5	2'-7"	┌	
d2(E)	56	#4	3'-0"	┌	
d3(E)	56	#4	3'-1"	┌	
e(E)	12	#4	28'-7"	┌	
e1(E)	4	#8	30'-2"	┌	
e2(E)	4	#5	28'-9"	┌	
Concrete Removal				Cu. Yd.	10.5
Concrete Superstructure				Cu. Yd.	10.5
Mechanical Splicers				Each	40
Reinforcement Bars, Epoxy Coated				Pound	2540

Bars indicated thus 3 x 2-#4 etc. indicates 3 lines of bars with 2 lengths per line.