

F.A.I. RTE.	SECTION	COUNTY	TOTAL SHEETS	SHEET NO.
94	2012-0641	COOK	18	1
ILLINOIS			CONTRACT NO. 60V77	

STATE OF ILLINOIS  
DEPARTMENT OF TRANSPORTATION  
DIVISION OF HIGHWAYS

**PROPOSED  
HIGHWAY PLANS**

F.A.I. ROUTE 94: I-94 (BISHOP FORD EXPY)  
130th ST TO US 6 (159th ST)  
SECTION: 2012-0641  
CRACK AND JOINT SEALING  
PROJECT: *ESP-094-3(417)072*  
COOK COUNTY  
C-91-355-07

FOR INDEX OF SHEETS, SEE SHEET NO. 2

PROJECT LOCATED IN CALUMET CITY  
AND THE VILLAGES OF  
DOLTON AND SOUTH HOLLAND

PROJECT ENDS  
STA 255+52 W.B.  
STA 255+76 E.B.

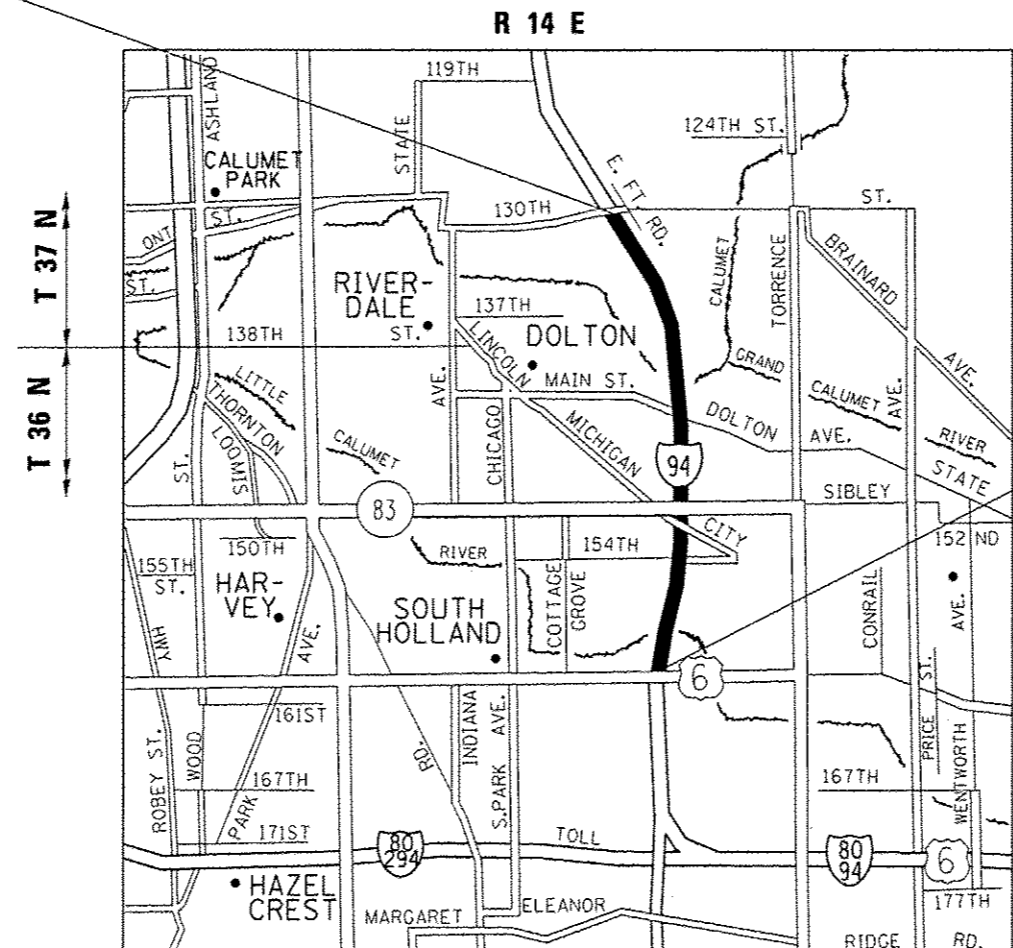
**TRAFFIC DATA:**

2010 ADT = 156000  
POSTED SPEED LIMIT = 55 MPH

J.U.L.I.E.  
JOINT UTILITY LOCATION INFORMATION FOR EXCAVATION  
1-800-892-0123  
OR 811

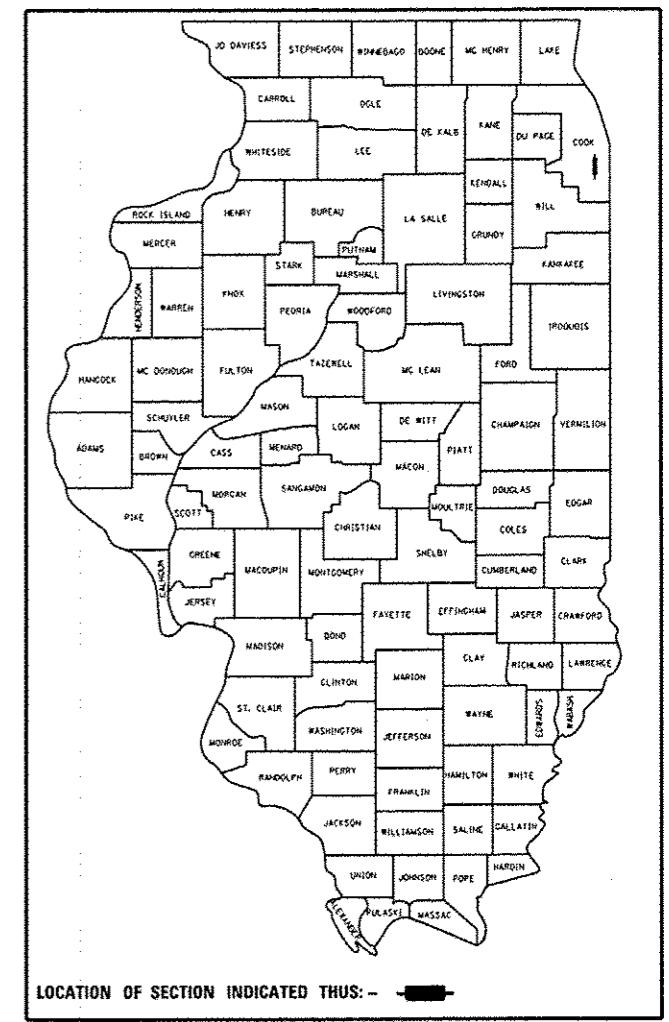
PROJECT ENGINEER ROBERT BORO (847) 705-4237  
PROJECT MANAGER ISSAM RAYYAN (847) 705-4178

CONTRACT NO. 60V77



PROJECT BEGINS  
STA 30+66 W.B.  
STA 30+66 E.B.

D-91-067-13



LOCATION OF SECTION INDICATED THUS: - [black rectangle] -

STATE OF ILLINOIS  
DEPARTMENT OF TRANSPORTATION  
DIVISION OF HIGHWAYS  
SUBMITTED December 12, 2012  
*[Signature]*  
DEPUTY DIRECTOR OF HIGHWAYS, REGION ENGINEER  
Feb 1 2013  
*John D. Baranzoli P.E. I.E.*  
ENGINEER OF DESIGN AND ENVIRONMENT  
Feb 1 2013  
*Omer Osman P.E. I.E.*  
DIRECTOR OF HIGHWAYS, CHIEF ENGINEER

PRINTED BY THE AUTHORITY  
OF THE STATE OF ILLINOIS

GROSS LENGTH = 22510 FT. = 4.26 MILE

HYDE PARK AND THORNTON TOWNSHIP

**INDEX OF SHEETS**

SHEET NO.	DESCRIPTION
1	TITLE SHEET
2	INDEX OF SHEETS, STATE STANDARDS AND GENERAL NOTES
3	SUMMARY OF QUANTITIES
4-12	PROPOSED PLANS AND PAVEMENT MARKING PLANS
13	CRACK & JOINT SEALING DETAIL
14	FREEWAY ENTRANCE AND EXIT RAMP (TC-08)
15	TRAFFIC CONTROL DETAILS FOR FREEWAY SINGLE & MULTI-LANE WEAVE (TC-09)
16-17	MULTI-LANE FREEWAY PAVEMENT MARKING DETAILS (TC-12)
18	TRAFFIC CONTROL DETAILS FOR FREEWAY SHOULDER CLOSURES AND PARTIAL RAMP CLOSURES (TC-17)

**STANDARDS**

701400-06	APPROACH TO LANE CLOSURE, FREEWAY/EXPRESSWAY
701401-07	LANE CLOSURE, FREEWAY/EXPRESSWAY
701411-08	LANE CLOSURE, MULTILANE AT ENTRANCE OR EXIT RAMP, FOR SPEEDS > 45 MPH
701426-05	LANE CLOSURE, MULTILANE, INTERMITTENT OR MOVING OPERATION, FOR SPEEDS > 45 MPH
701446-04	TWO LANE CLOSURE FREEWAY/EXPRESSWAY
701901-02	TRAFFIC CONTROL DEVICES

**GENERAL NOTES**

BEFORE STARTING ANY EXCAVATION, THE CONTRACTOR SHALL CALL "JULIE" AT (800) 892-0123 OR 811 FOR FIELD LOCATIONS OF BURIED ELECTRIC, TELEPHONE AND GAS UTILITIES. (48 HOUR NOTIFICATION IS REQUIRED).

THE CONTRACT SHALL COORDINATE CONSTRUCTION ACTIVITIES WITH UTILITY COMPANIES OF CALUMET CITY AND THE VILLAGES OF DOLTON AND SOUTH HOLLAND.

THE CONTRACTOR WILL NOT BE ALLOWED TO SET UP A YARD OR FIELD OFFICE ON STATE PROPERTY WITHOUT WRITTEN PERMISSION FROM THE DEPARTMENT.

IT SHALL BE THE CONTRACTOR'S RESPONSIBILITY TO VERIFY ALL DIMENSIONS AND CONDITIONS EXISTING IN THE FIELD PRIOR TO CONSTRUCTION AND ORDERING OF MATERIALS.

THE CONTRACTOR SHALL CONTACT THE DISTRICT ONE TRAFFIC CONTROL SUPERVISOR AT (847) 705-4151 A MINIMUM OF 72 HOURS IN ADVANCE OF BEGINNING WORK.

THE ENGINEER SHALL CONTACT PATRICE HARRIS, AREA TRAFFIC FIELD ENGINEER, AT (708) 597-9800 A MINIMUM OF TWO (2) WEEKS PRIOR TO THE PLACEMENT OF PERMANENT PAVEMENT MARKINGS.

ALL CRACK ROUTING & CRACK SEALING LOCATIONS WILL BE DETERMINED IN THE FIELD BY THE ENGINEER. CRACK ROUTING SHALL BE OMITTED WHERE VEHICLE DETECTOR LOOPS & RAISED REFLECTIVE PAVEMENT MARKERS ARE PRESENT IN THE PAVEMENT.

MATERIALS RESULTING FROM THE ROUTING OF CRACKS IN THE EXISTING PAVEMENT MAY BE PLACED, SHAPED AND COMPACTED TO THE SATISFACTION OF THE ENGINEER ALONG EXISTING AGGREGATE SHOULDERS ADJACENT TO THE PAVEMENT. ALL MATERIALS RESULTING FROM THE ROUTING OF CRACKS IN PAVEMENTS WITHOUT AGGREGATE SHOULDERS AND SURPLUS MATERIALS RESULTING FROM THE ROUTING OF CRACKS IN PAVEMENTS WITH AGGREGATE SHOULDERS, WHERE ALL MATERIALS ARE NOT PLACED ALONG EXISTING AGGREGATE SHOULDERS, SHALL BE DISPOSED OF AS SPECIFIED IN ARTICLE 202.03 OF THE STANDARD SPECIFICATIONS. OLD SEALANTS REMOVED PRIOR TO ROUTING SHALL BE DISPOSED OF AS SPECIFIED IN ARTICLE 202.03. THIS WORK WILL NOT BE PAID FOR SEPARATELY, BUT THE COST SHALL BE CONSIDERED AS INCLUDED IN THE CONTRACT UNIT PRICE FOR THE CONSTRUCTION ITEMS INVOLVED, AND NO ADDITIONAL COMPENSATION WILL BE ALLOWED.

DO NOT SCALE PLANS FOR CONSTRUCTION DIMENSIONS.

CONTACT IDOT ELECTRICAL MAINTENANCE CONTRACTOR AT (773) 287-7600 TO LOCATE ANY ELECTRICAL CABLES WITHIN STATE R.O.W.

FILE NAME *	USER NAME * gorngautab	DESIGNED -	REVISED -	<b>STATE OF ILLINOIS DEPARTMENT OF TRANSPORTATION</b>	<b>INDEX OF SHEETS, STATE STANDARDS AND GENERAL NOTES</b>	F.A.I. RTE.	SECTION	COUNTY	TOTAL SHEETS	SHEET NO.	
c:\pwork\pedit\gorngautab\d0318599\106713-sht-plan.dgn		DRAWN -	REVISED -			94	2012-0641	COOK	18	2	
#MODELNAME*	PLOT SCALE * 100.0000 * 1/ in.	CHECKED -	REVISED -			<b>CONTRACT NO. 60V77</b>					
	PLOT DATE * 1/25/2013	DATE -	REVISED -			ILLINOIS FED. AID PROJECT					
						SCALE:	SHEET	OF	SHEETS	STA. TO STA.	

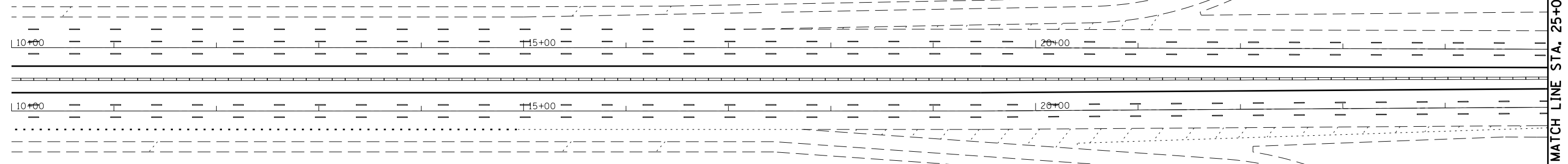
SUMMARY OF QUANTITIES				CONSTRUCTION TYPE CODE 0005					SUMMARY OF QUANTITIES				CONSTRUCTION TYPE CODE				
CODE NO	ITEM	UNIT	TOTAL QUANTITIES						CODE NO	ITEM	UNIT	TOTAL QUANTITIES					
45100100	CRACK ROUTING (PAVEMENT)	FOOT	139961	139961													
45100200	CRACK FILLING	POUND	87440	87440													
67100100	MOBILIZATION	L SUM	1	1													
70200100	NIGHTTIME WORK ZONE LIGHTING	L SUM	1	1													
X7011015	TRAFFIC CONTROL AND PROTECTION (EXPRESSWAYS)	L SUM	1	1													
* X7800815	HOT SPRAY THERMOPLASTIC PAVEMENT MARKING LINE - 4 INCH	FOOT	76844	76844													
* X7800825	HOT SPRAY THERMOPLASTIC PAVEMENT MARKING LINE - 5 INCH	FOOT	22707	22707													
* X7800845	HOT SPRAY THERMOPLASTIC PAVEMENT MARKING LINE - 8 INCH	FOOT	15078	15078													
Z0076600	TRAINEES	HOOR															

URBAN  
100%  
FED.

FILE NAME :	USER NAME : goren00100	DESIGNED -	REVISED -	STATE OF ILLINOIS DEPARTMENT OF TRANSPORTATION	I-94 (BISHOP FORD EXPY) (130th ST TO US (159th ST)) SUMMARY OF QUANTITIES	F.A. RTE. :	SECTION :	COUNTY :	TOTAL SHEETS :	SHEET NO. :	
c:\p\work\p\101\goren00100\10318599-006713-011-p01.dgn		DRAWN -	REVISED -			94	2012-0641	COOK	18	3	
		CHECKED -	REVISED -			CONTRACT NO. 60V77					
		DATE -	REVISED -			FED. ROAD DIST. NO. 1 ILLINOIS FED. AID PROJECT					



I-94

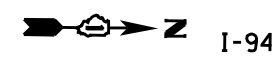


MATCH LINE STA. 25+00

**PROJECT BEGINS  
STA 30+66 W. BOUND  
STA 30+66 E. BOUND**

159TH ST.

PROPOSED HOT SPRAY THERMOPLASTIC  
PAVEMENT MARKING 4" WHITE  
SKIP DASH (2' DASH - 6' SKIP)  
TYP.



I-94

PROPOSED HOT SPRAY THERMOPLASTIC  
PAVEMENT MARKING 8" WHITE EDGE LINE  
TYP.

PROPOSED CRACK ROUTING  
PROPOSED CRACK FILLING

PROPOSED HOT SPRAY THERMOPLASTIC  
PAVEMENT MARKING 5" WHITE  
SKIP DASH (10' DASH - 30' SKIP)  
TYP.

MATCH LINE STA. 25+00

25+00  
30+00  
35+00

30+00  
35+00

35+00

EAST BOUND I-94

WEST BOUND I-94

MATCH LINE STA. 39+00

MATCH LINE STA. 39+00

PROPOSED HOT SPRAY THERMOPLASTIC  
PAVEMENT MARKING 4" YELLOW EDGE LINE  
TYP.

LIMITS OF IMPROVEMENT  
TYP.

PROPOSED HOT SPRAY THERMOPLASTIC  
PAVEMENT MARKING 4" WHITE EDGE LINE  
TYP.

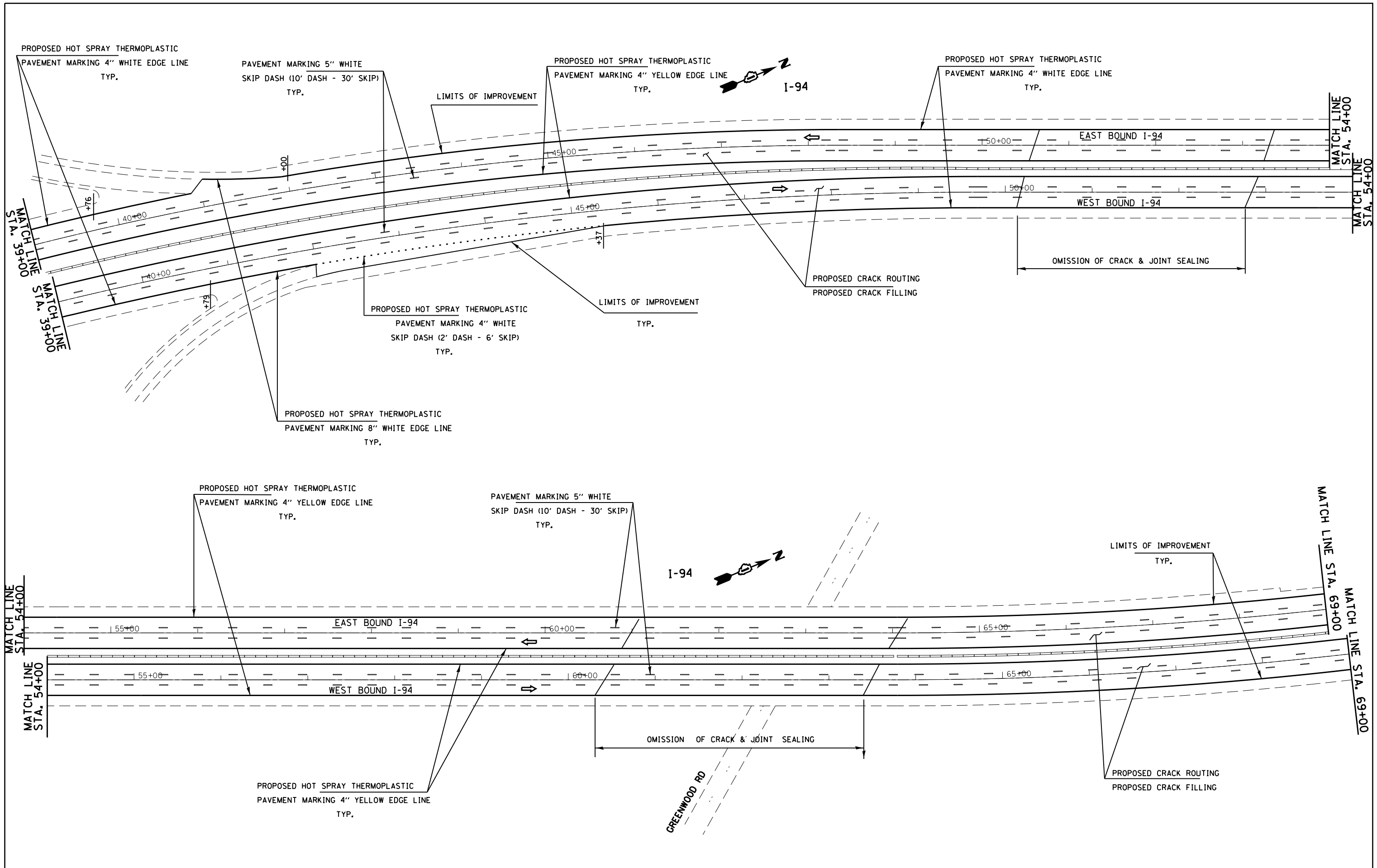
FILE NAME =	USER NAME = gorengautab	DESIGNED -	REVISED -
ct:\pw\work\p\dot\gorengautab\d0318599\106713-sht-plan.dgn	106713-sht-plan.dgn	DRAWN -	REVISED -
\$MODELNAME\$	PLOT SCALE = 100.0000' / in.	CHECKED -	REVISED -
	PLOT DATE = 12/13/2012	DATE -	REVISED -

**STATE OF ILLINOIS  
DEPARTMENT OF TRANSPORTATION**

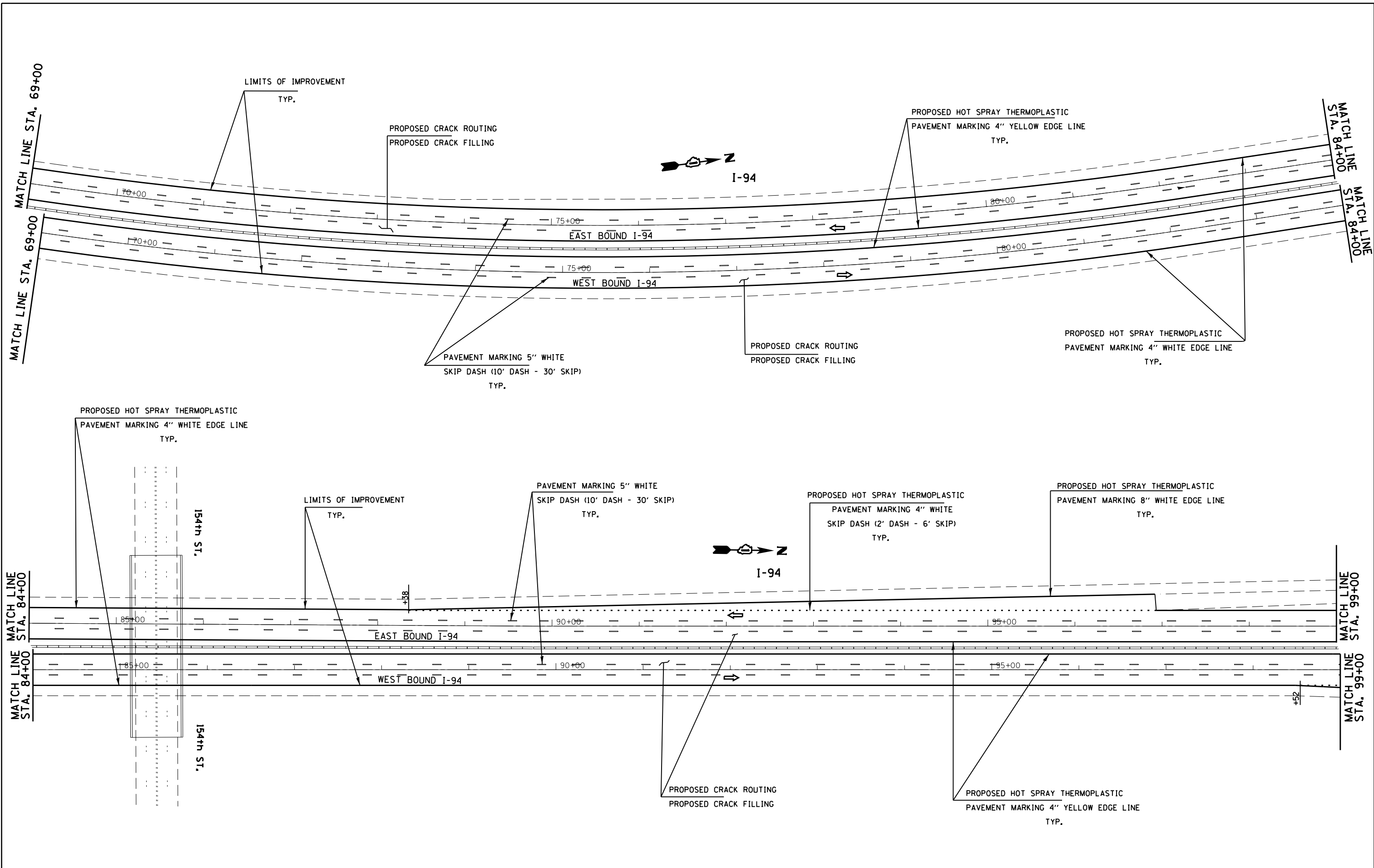
**I-94 (BISHOP FORD EXPY) (130th ST TO US (159th ST))  
PROPOSED PLANS AND PAVEMENT MARKING**

SCALE: SHEET OF SHEETS STA. TO STA.

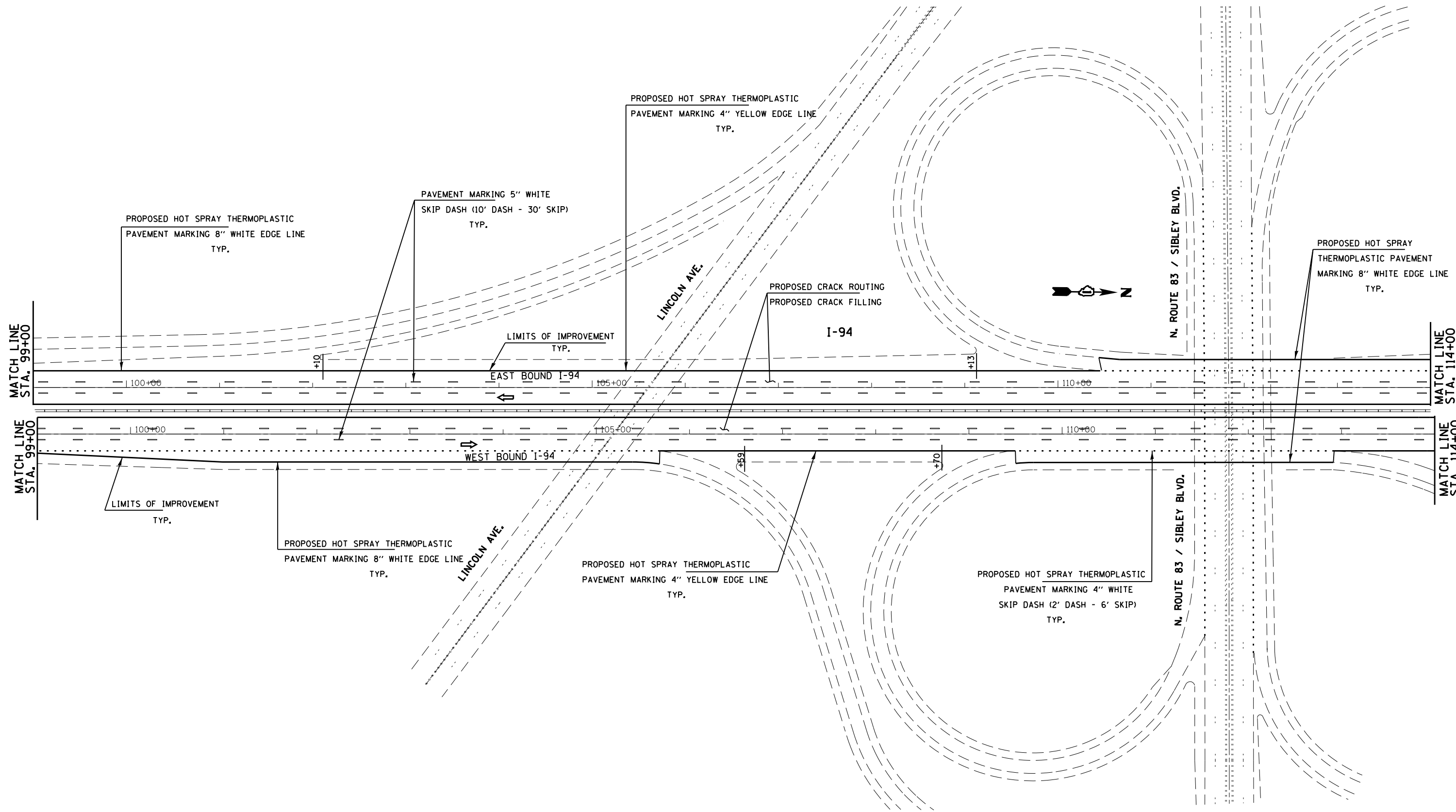
F.A.I. RTE. 94	SECTION 2012-0641	COUNTY COOK	TOTAL SHEETS 18	SHEET NO. 4
CONTRACT NO. 60V77			ILLINOIS FED. AID PROJECT	



FILE NAME =	USER NAME = gorengautab	DESIGNED -	REVISED -	<b>STATE OF ILLINOIS DEPARTMENT OF TRANSPORTATION</b>	<b>I-94 (BISHOP FORD EXPY) (130th ST TO US (159th ST)) PROPOSED PLANS AND PAVEMENT MARKING</b>	F.A.I. RTE.	SECTION	COUNTY	TOTAL SHEETS	SHEET NO.	
ce:\pwwork\pwwork\gorengautab\d0318599\106713-sht-plan.dgn	PLOT SCALE = 100.0000' / in.	DRAWN -	REVISED -			94	2012-064I	COOK	18	5	
\$MODELNAME\$	PLOT DATE = 12/13/2012	CHECKED -	REVISED -			CONTRACT NO.60V77					
		DATE -	REVISED -			ILLINOIS FED. AID PROJECT					



FILE NAME =	USER NAME = gorengautab	DESIGNED -	REVISED -	<b>STATE OF ILLINOIS DEPARTMENT OF TRANSPORTATION</b>	<b>I-94 (BISHOP FORD EXPY) (130th ST TO US (159th ST)) PROPOSED PLANS AND PAVEMENT MARKING</b>	F.A.I. RTE. =	SECTION	COUNTY	TOTAL SHEETS	SHEET NO.	
ci:\pwork\pwork\gorengautab\d0318599\106713-sht-plan.dgn	DRAWN -	REVISED -	94			2012-0641	COOK	18	6		
\$MODELNAME\$	PLOT SCALE = 100.0000' / 1" =	CHECKED -	REVISED -			<b>CONTRACT NO. 60V77</b>					
	PLOT DATE = 12/13/2012	DATE -	REVISED -			ILLINOIS FED. AID PROJECT					



FILE NAME =	USER NAME = gorengautab	DESIGNED -	REVISED -
ct:\pw\work\p1dot\gorengautab\d0318599\106713-sht-plan.dgn		DRAWN -	REVISED -
\$MODELNAME\$	PLOT SCALE = 100.0000' / in.	CHECKED -	REVISED -
	PLOT DATE = 12/13/2012	DATE -	REVISED -

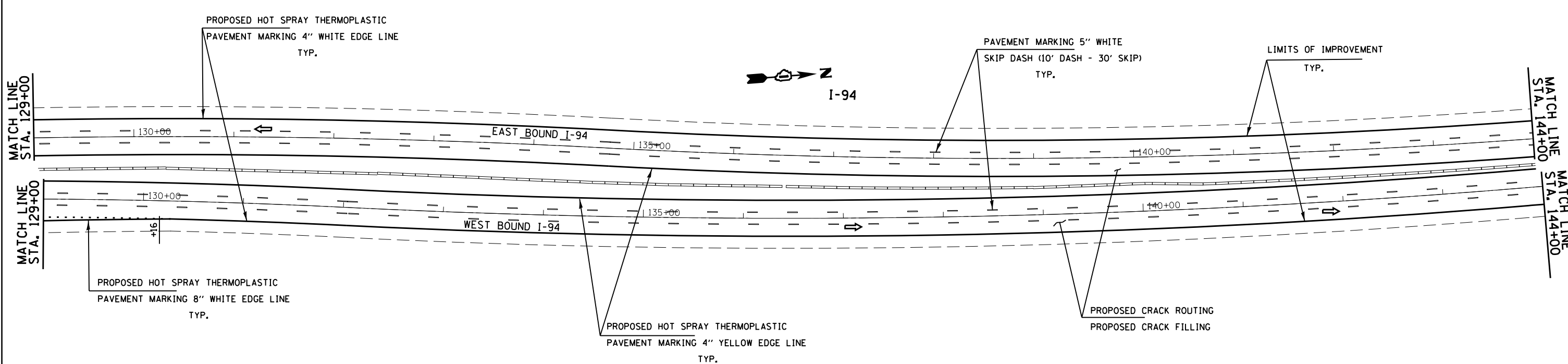
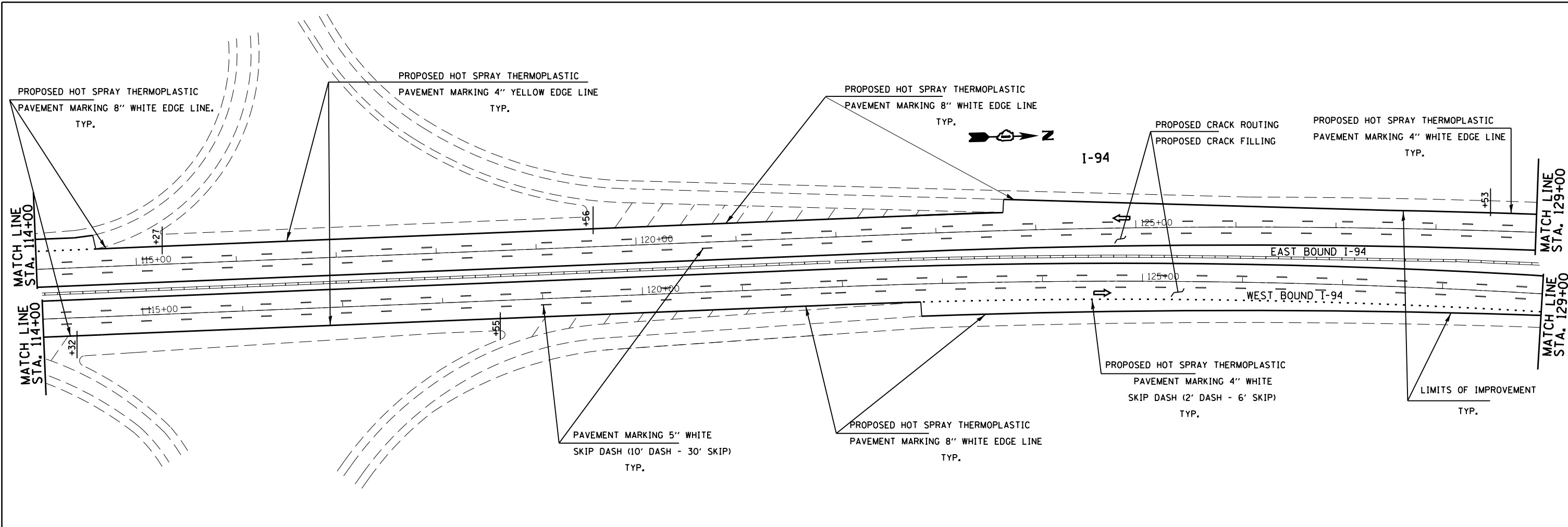
**STATE OF ILLINOIS  
DEPARTMENT OF TRANSPORTATION**

**I-94 (BISHOP FORD EXPY) (130th ST TO US (159th ST))  
PROPOSED PLANS AND PAVEMENT MARKING**

SCALE: SHEET OF SHEETS STA. TO STA.

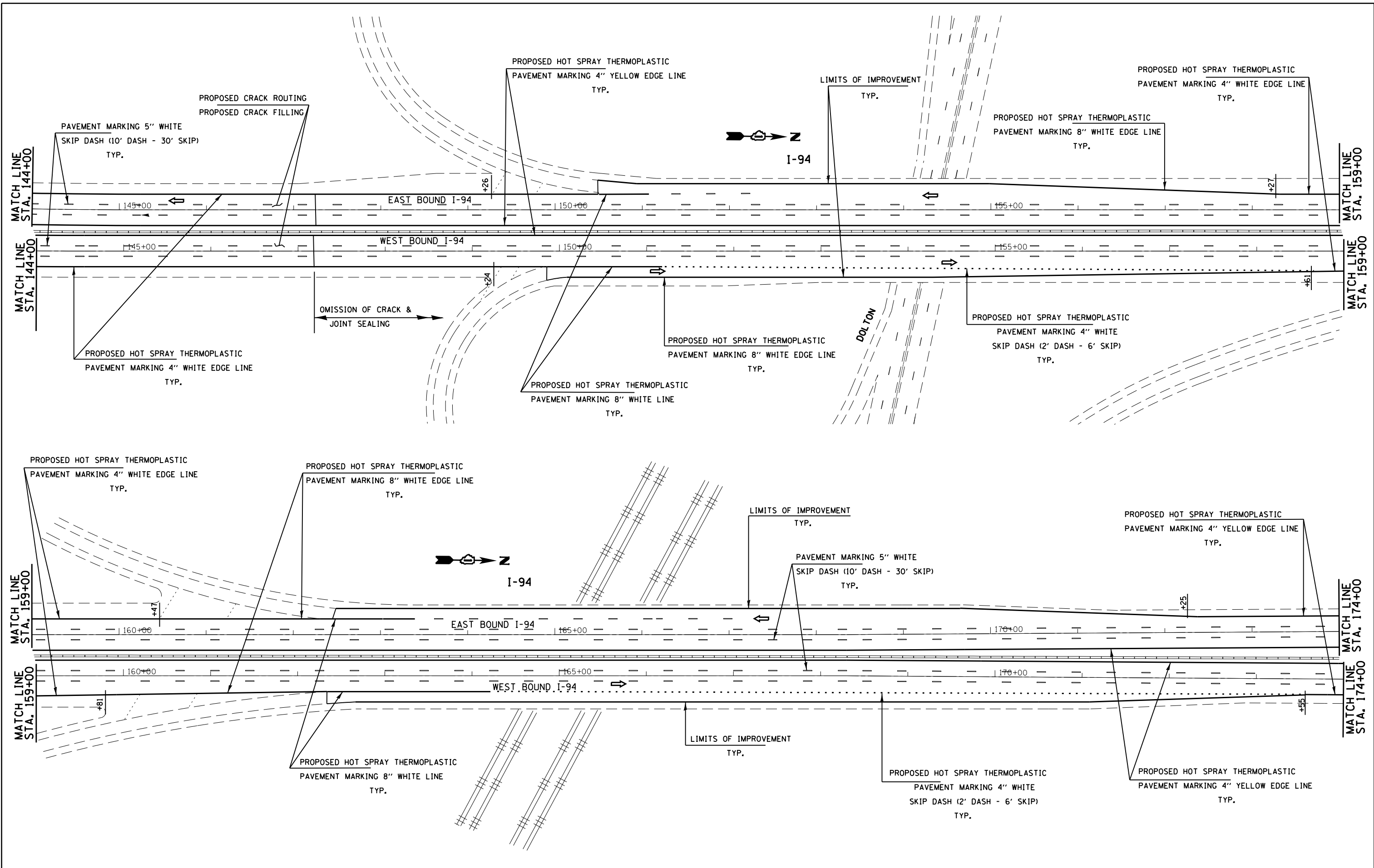
F.A.I. RTE. 94	SECTION 2012-064I	COUNTY COOK	TOTAL SHEETS 18	SHEET NO. 7
CONTRACT NO. 60V77				

ILLINOIS FED. AID PROJECT

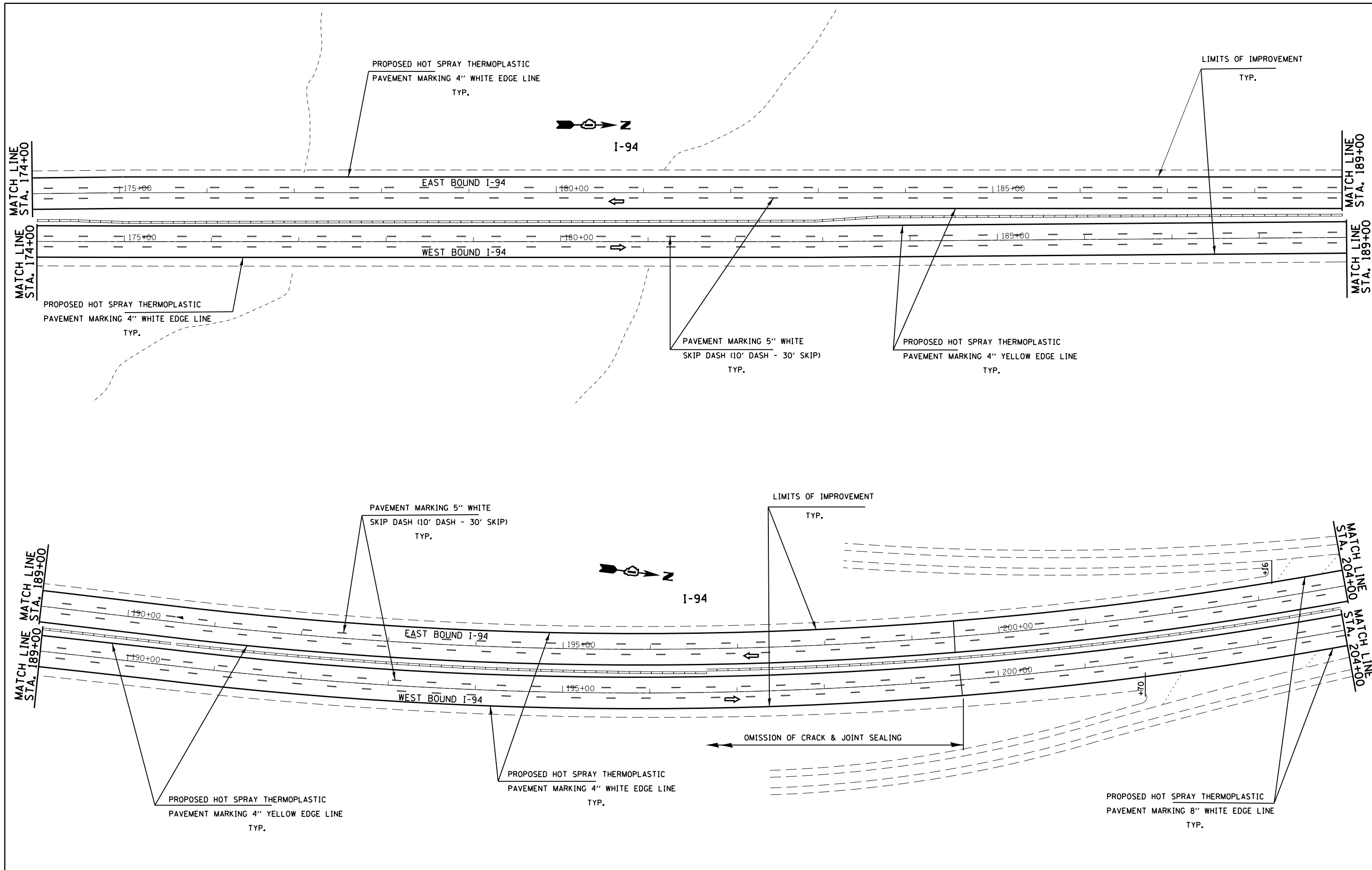


FILE NAME =	USER NAME = gorengautab	DESIGNED -	REVISED -	<b>STATE OF ILLINOIS DEPARTMENT OF TRANSPORTATION</b>	<b>I-94 (BISHOP FORD EXPY) (130th ST TO US (159th ST)) PROPOSED PLANS AND PAVEMENT MARKING</b>	F.A.I. RTÉ.	SECTION	COUNTY	TOTAL SHEETS	SHEET NO.	
ci:\pwwork\pwwork\gorengautab\d0318599\106713-sht-plan.dgn	PLOT SCALE = 100.0000' / in.	DRAWN -	REVISED -			94	2012-064I	COOK	18	8	
\$MODELNAME\$	PLOT DATE = 12/13/2012	CHECKED -	REVISED -			<b>CONTRACT NO. 60V77</b>					
		DATE -	REVISED -			ILLINOIS FED. AID PROJECT					





FILE NAME =	USER NAME = gorengautab	DESIGNED -	REVISED -	<b>STATE OF ILLINOIS DEPARTMENT OF TRANSPORTATION</b>	<b>I-94 (BISHOP FORD EXPY) (130th ST TO US (159th ST)) PROPOSED PLANS AND PAVEMENT MARKING</b>	F.A.I. RTE.	SECTION	COUNTY	TOTAL SHEETS	SHEET NO.	
ce:\pwwork\pwwork\gorengautab\d0318599\106713-sht-plan.dgn	PLOT SCALE = 100.0000' / in.	DRAWN -	REVISED -			94	2012-064I	COOK	18	9	
\$MODELNAME\$	PLOT DATE = 12/13/2012	CHECKED -	REVISED -			CONTRACT NO. 60V77					
		DATE -	REVISED -			ILLINOIS FED. AID PROJECT					



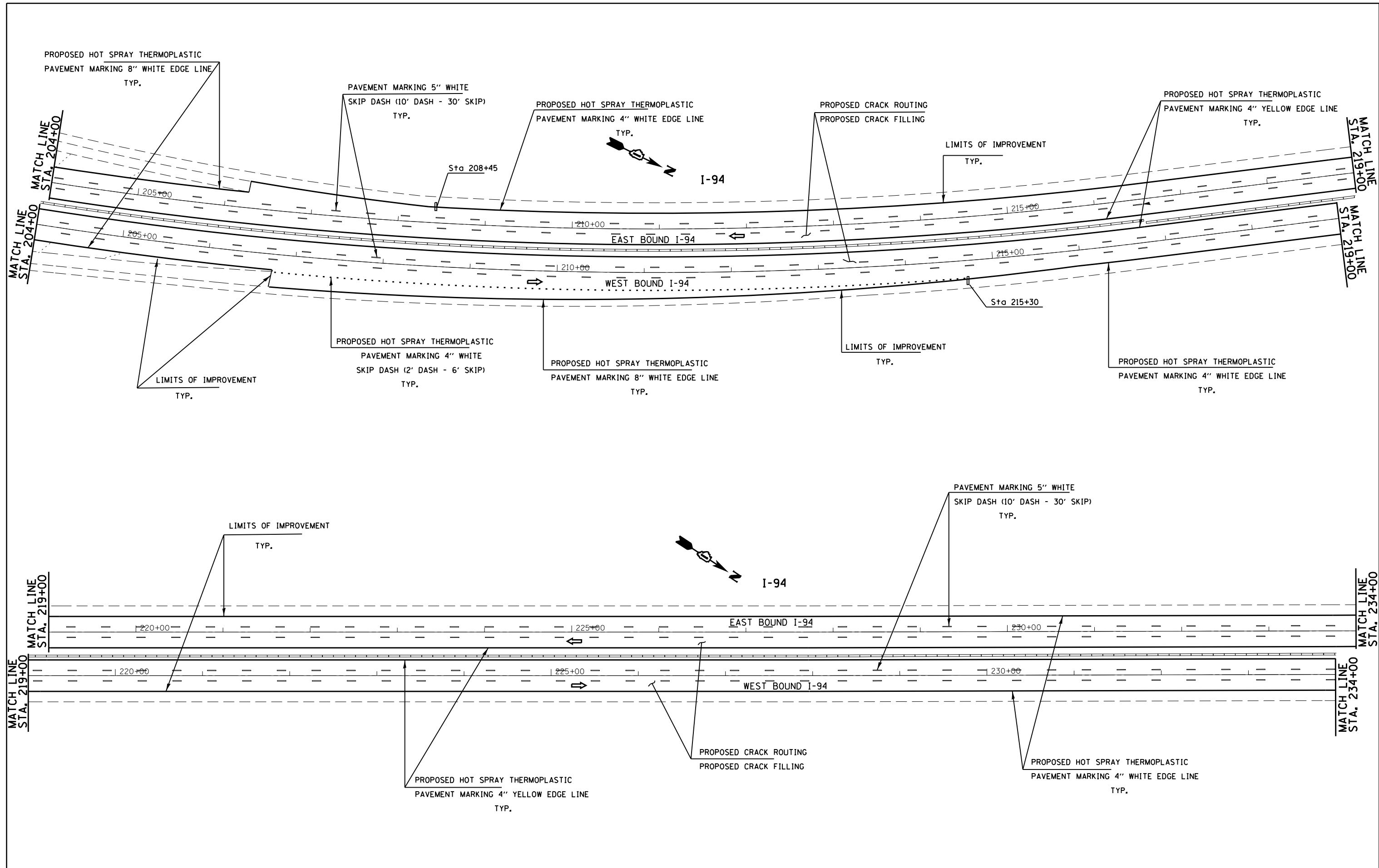
FILE NAME =	USER NAME = gorengautab	DESIGNED -	REVISED -
ei:\pwwork\pwwork\gorengautab\d0318599\106713-sht-plan.dgn	106713-sht-plan.dgn	DRAWN -	REVISED -
\$MODELNAME\$	PLOT SCALE = 100.0000' / in.	CHECKED -	REVISED -
	PLOT DATE = 12/13/2012	DATE -	REVISED -

**STATE OF ILLINOIS  
DEPARTMENT OF TRANSPORTATION**

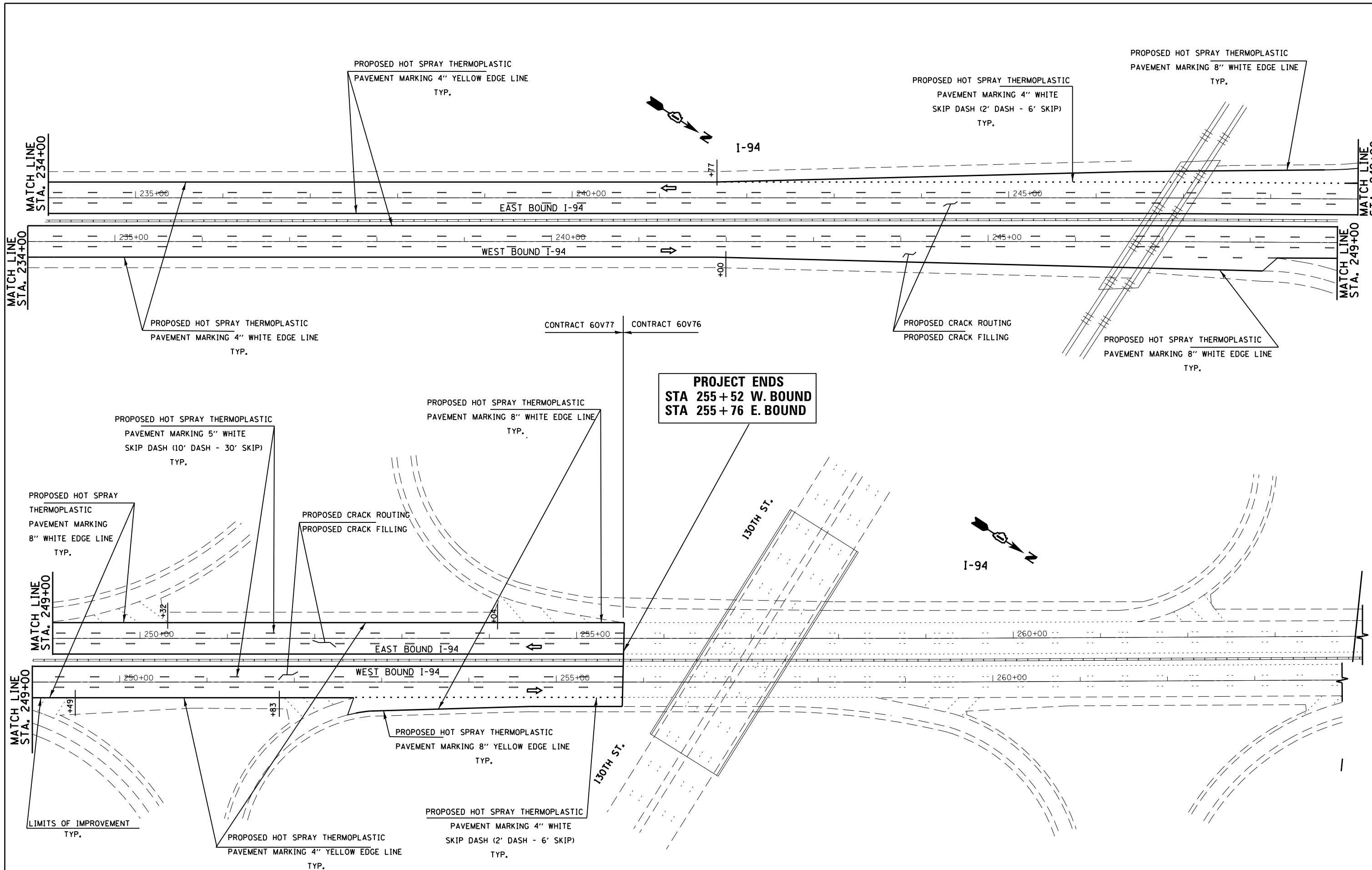
**I-94 (BISHOP FORD EXPY) (130th ST TO US (159th ST))  
PROPOSED PLANS AND PAVEMENT MARKING**

SCALE: SHEET OF SHEETS STA. TO STA.

F.A.I. RTE. 94	SECTION 2012-064I	COUNTY COOK	TOTAL SHEETS 18	SHEET NO. 10
CONTRACT NO. 60V77				
ILLINOIS FED. AID PROJECT				



FILE NAME =	USER NAME = gorengautab	DESIGNED -	REVISED -	<b>STATE OF ILLINOIS DEPARTMENT OF TRANSPORTATION</b>	<b>I-94 (BISHOP FORD EXPY) (130th ST TO US (159th ST)) PROPOSED PLANS AND PAVEMENT MARKING</b>	F.A.I. RTÉ.	SECTION	COUNTY	TOTAL SHEETS	SHEET NO.	
ei:\pwwork\pwwork\gorengautab\d0318599\106713-sht-plan.dgn	PLOT SCALE = 100.0000' / in.	DRAWN -	REVISED -			94	2012-064I	COOK	18	11	
\$MODELNAME\$	PLOT DATE = 12/13/2012	CHECKED -	REVISED -			CONTRACT NO. 60V77					
		DATE -	REVISED -			ILLINOIS FED. AID PROJECT					



**PROJECT ENDS**  
**STA 255 + 52 W. BOUND**  
**STA 255 + 76 E. BOUND**

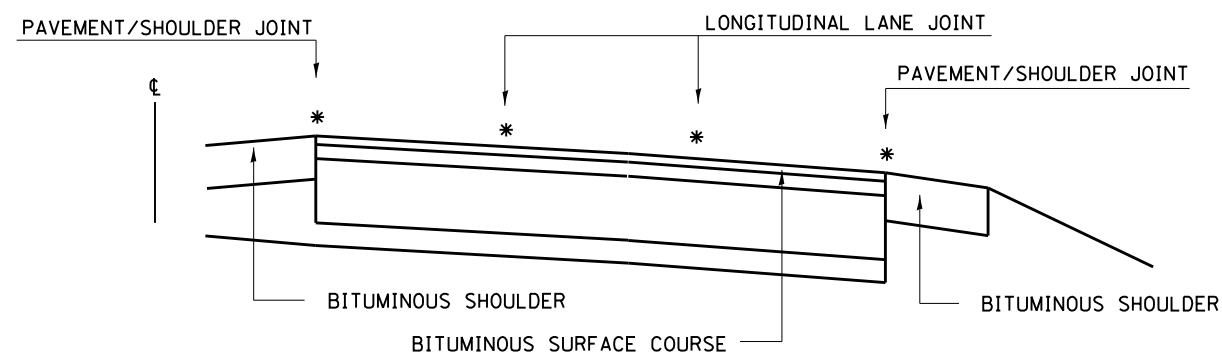
FILE NAME =	USER NAME = gorengautab	DESIGNED -	REVISED -
ca:\pwwork\pwwork\gorengautab\d0318599\106713-sht-plan.dgn		DRAWN -	REVISED -
\$MODELNAME\$	PLOT SCALE = 100.0000' / 1in.	CHECKED -	REVISED -
	PLOT DATE = 12/13/2012	DATE -	REVISED -

**STATE OF ILLINOIS**  
**DEPARTMENT OF TRANSPORTATION**

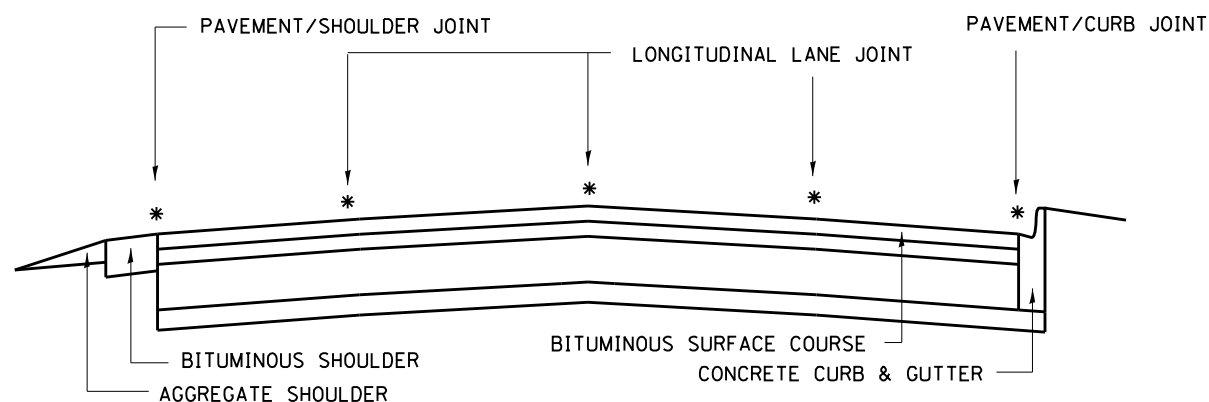
**I-94 (BISHOP FORD EXPY) (130th ST TO US (159th ST))**  
**PROPOSED PLANS AND PAVEMENT MARKING**

SCALE: SHEET OF SHEETS STA. TO STA.

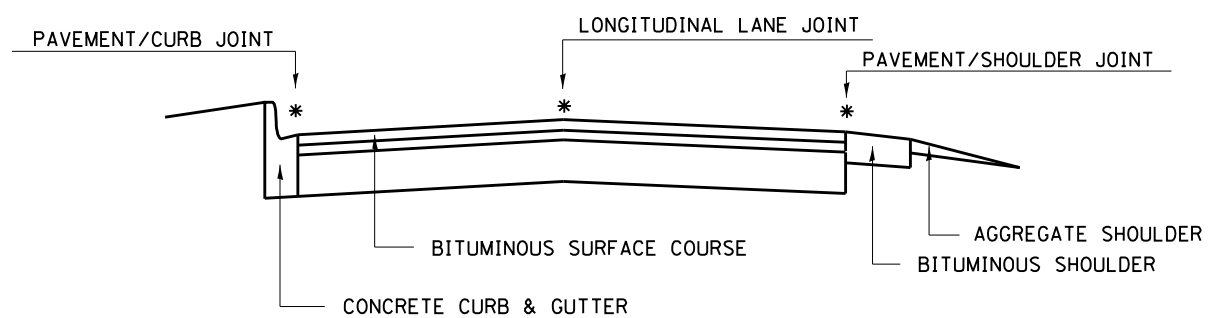
F.A.I. RTE.	SECTION	COUNTY	TOTAL SHEETS	SHEET NO.
94	2012-0641	COOK	18	12
CONTRACT NO. 60V77				
ILLINOIS FED. AID PROJECT				



MULTI-LANE DIVIDED PAVEMENT



MULTI-LANE UNDIVIDED PAVEMENT

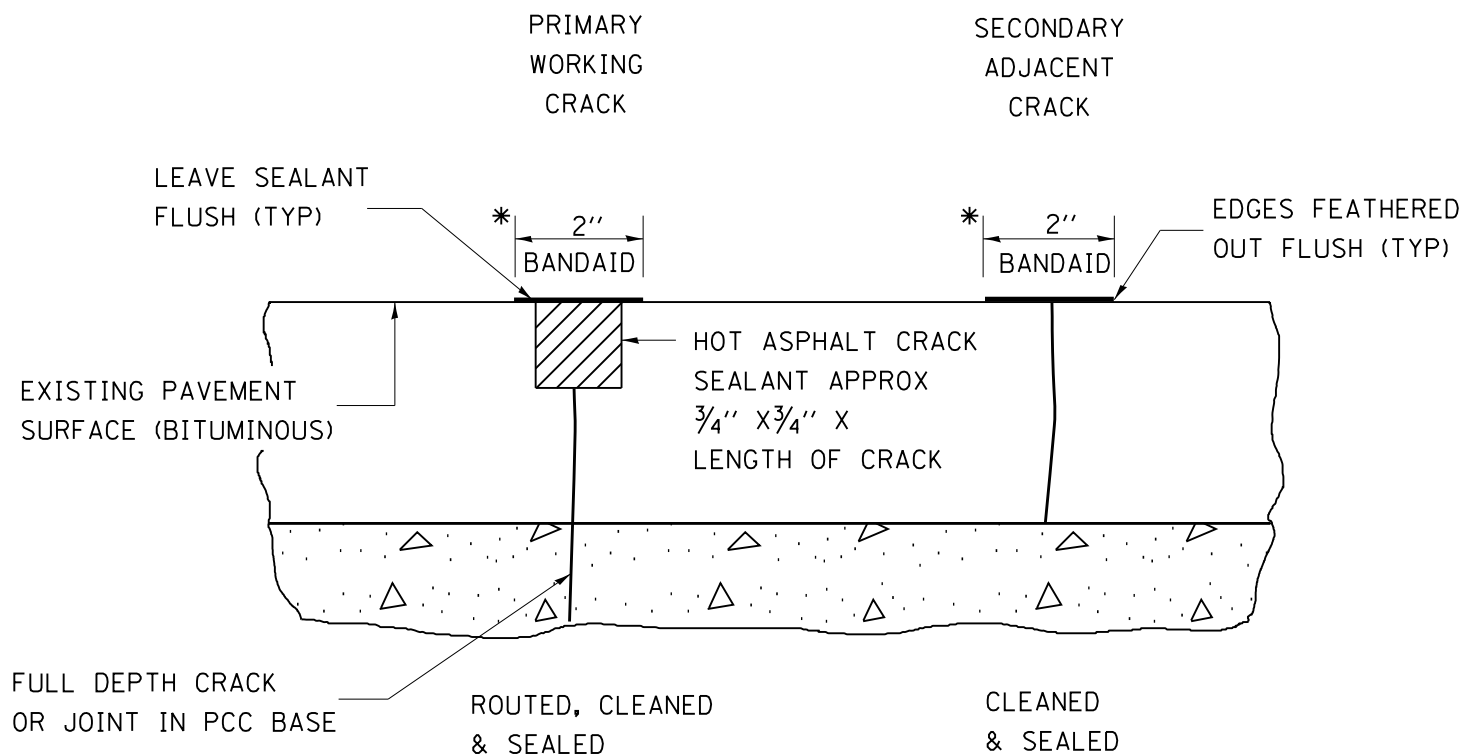


TWO-LANE PAVEMENT

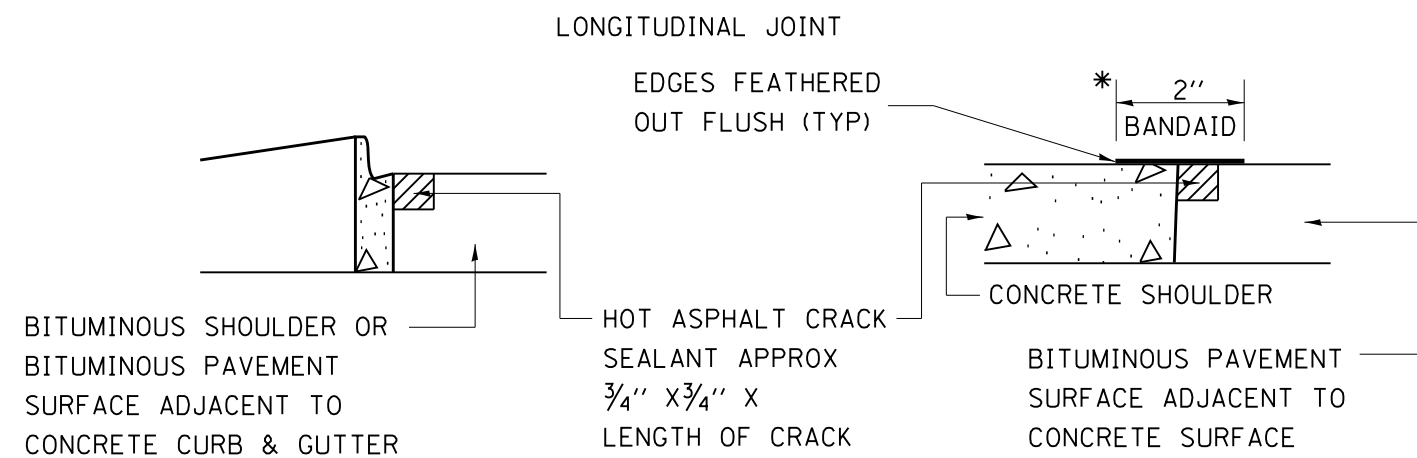
PROPOSED TRANSVERSE CRACK ROUTING (PAVEMENT) & CRACK FILLING LOCATIONS NOT SHOWN

\* PROPOSED LONGITUDINAL CRACK ROUTING (PAVEMENT) & CRACK FILLING LOCATIONS

GENERAL EXISTING TYPICAL SECTIONS



\* IN ALL LOCATIONS WHERE THE LONGITUDINAL CRACK CONFLICTS WITH EXISTING PAVEMENT MARKINGS (EITHER EDGE LINE OR LANE LINE) THE CRACK SHALL BE ROUTED & THE RESULTING RESERVOIR FILLED WITH SEALANT. HOWEVER, THE 2" BANDAID SEALANT STRIP SHALL BE DELETED TO PREVENT UNNECESSARY DAMAGE TO THE EXISTING PAVEMENT MARKINGS. ALL DAMAGES TO EXISTING RAISED REFLECTIVE PAVEMENT MARKERS SHALL BE REPLACED AT THE EXPENSE OF THE CONTRACTOR. ALL EXISTING PAVEMENT MARKINGS WITHIN THE PROJECT LIMITS SHALL BE RESTORED WITH HOT SPRAY THERMOPLASTIC PAVEMENT MARKINGS.



CRACK & JOINT SEALING DETAIL

FILE NAME = D106713-sht-plan.dgn	USER NAME = gorengautab	DESIGNED - DRAWN -	REVISED - REVISED -
PLOT SCALE = 100.0000' / in.	CHECKED -	REVISED -	REVISED -
PLOT DATE = 12/13/2012	DATE -	REVISED -	REVISED -

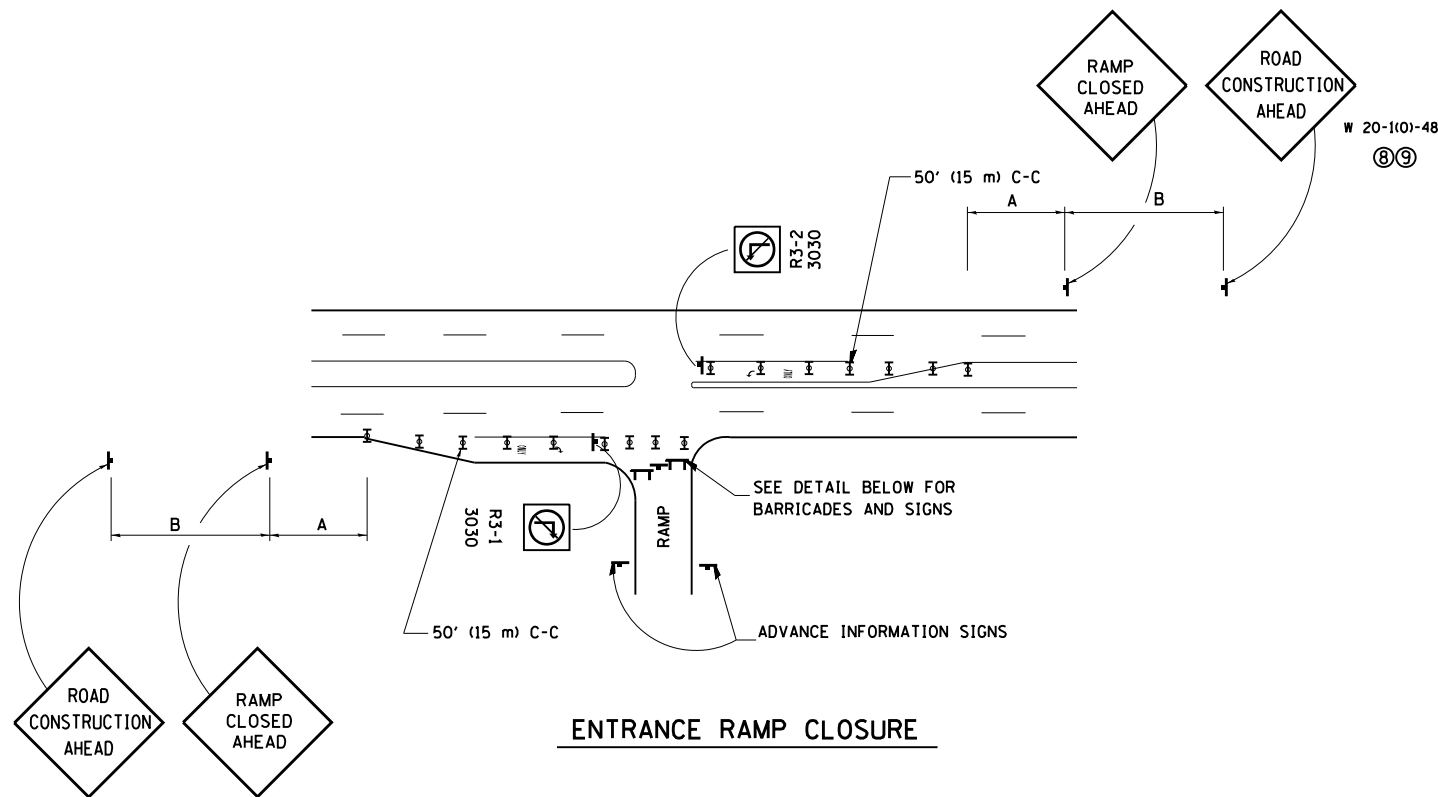
STATE OF ILLINOIS  
DEPARTMENT OF TRANSPORTATION

I-94 (BISHOP FORD EXPY) (130th ST TO US (159th ST))  
CRACK & JOINT SEALING DETAIL

SCALE: SHEET NO. OF SHEETS STA. TO STA.

F.A.I. RTE. 94	SECTION 2012-0641	COUNTY COOK	TOTAL SHEETS 18	SHEET NO. 13
CONTRACT NO. 60V77				

ILLINOIS FED. AID PROJECT



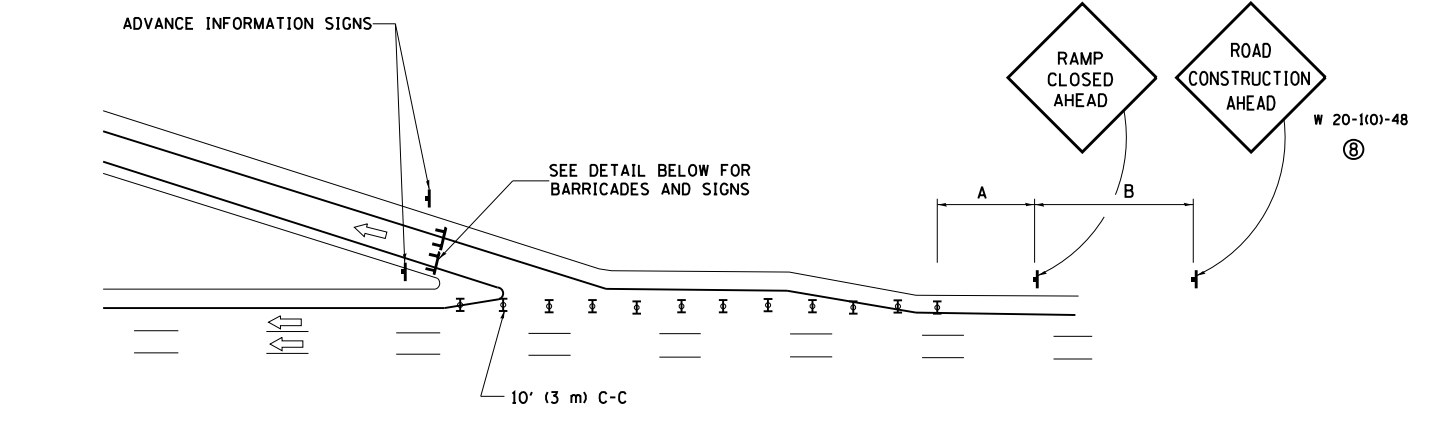
**ENTRANCE RAMP CLOSURE**

**SIGN SPACING TABLE**

FACILITY	DISTANCE BETWEEN SIGNS	
	A	B
EXPRESSWAY >24 HOURS	1000' (300 m)	1500' (450 m)
EXPRESSWAY <24 HOURS	500' (150 m)	500' (150 m)
ARTERIAL >45 MPH	350' (100 m)	350' (100 m)
ARTERIAL <45 MPH	150' (45 m)	150' (45 m)

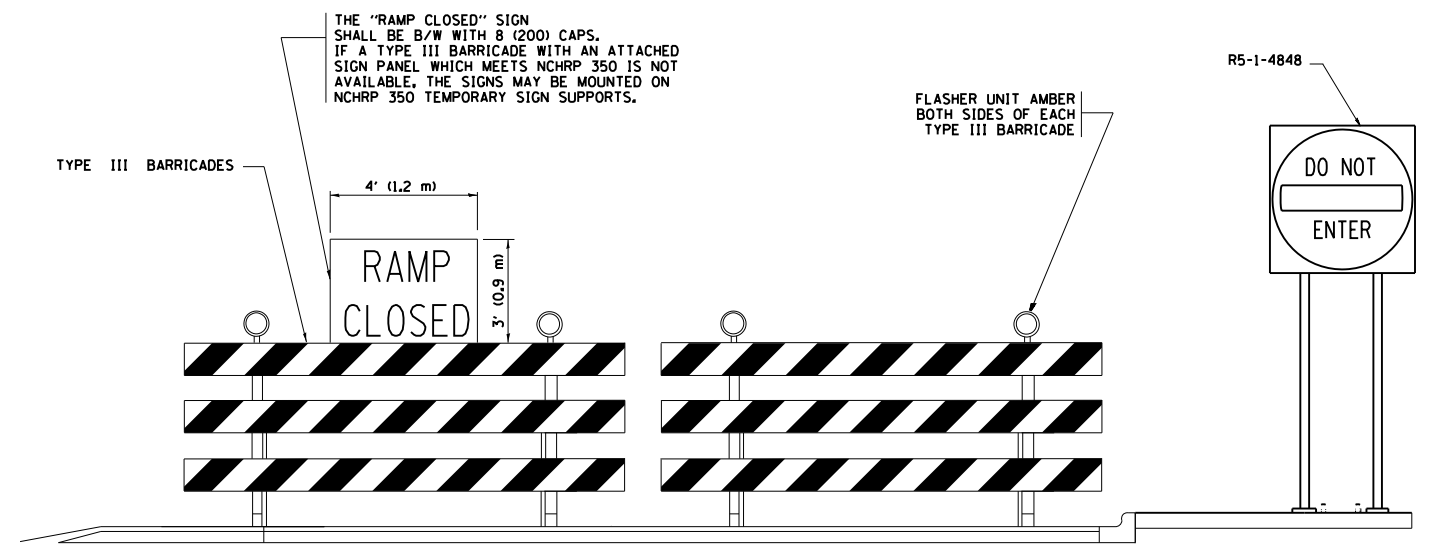
DISTANCES MAY BE SHORTENED DEPENDING UPON THE PROXIMITY OF ADJACENT RAMPS OR INTERSECTIONS.

W 20-1(0)-48  
⑧⑨

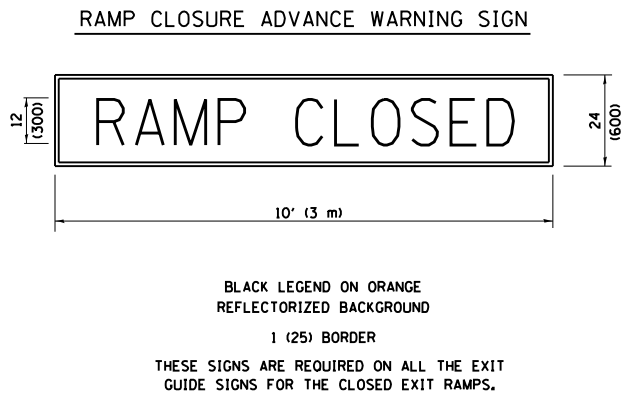


**EXIT RAMP CLOSURE**

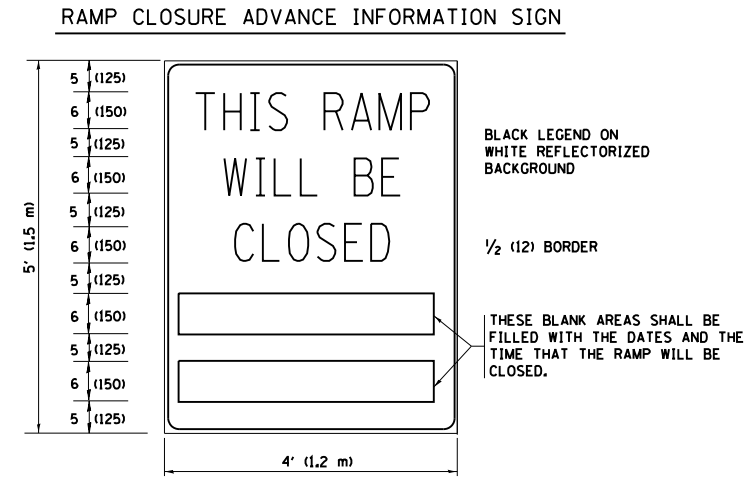
- SYMBOLS**
- ⌚ TYPE II BARRICADE, DRUM OR VERTICAL BARRICADE WITH STEADY BURN MONO-DIRECTIONAL LIGHT
  - ⌚ TYPE III BARRICADE WITH FLASHING LIGHT



**DETAIL FOR REQUIRED BARRICADES & SIGNS**



BLACK LEGEND ON ORANGE REFLECTORIZED BACKGROUND  
1 (25) BORDER  
THESE SIGNS ARE REQUIRED ON ALL THE EXIT GUIDE SIGNS FOR THE CLOSED EXIT RAMPS.



THESE SIGNS ARE REQUIRED ON BOTH SIDES OF THE RAMP, MINIMUM OF 1 WEEK IN ADVANCE OF THE CLOSURE.

**GENERAL NOTES:**

- ① CONES MAY BE SUBSTITUTED FOR DRUMS OR TYPE II BARRICADES DURING DAY OPERATIONS. CONES SHALL BE A MINIMUM OF 28 (700) HIGH.
- ② STEADY BURN LIGHTS WILL NOT BE REQUIRED FOR DAY OPERATIONS.
- ③ A FLAGGER SHALL BE POSITIONED AT EACH CLOSED RAMP THAT IS OPEN TO CONSTRUCTION VEHICLES.
- ④ ALL ROUTE MARKERS AND TRAILBLAZER ASSEMBLIES WHICH DIRECT MOTORISTS TO A CLOSED ENTRANCE RAMP SHALL BE COVERED.
- ⑤ THE SIGNING AND BARRICADING WHICH IS REQUIRED BY THIS DETAIL SHALL BE INCLUDED IN THE COST OF TRAFFIC CONTROL AND PROTECTION (EXPRESSWAYS).
- ⑥ AUTHORIZATION FROM THE DISTRICT'S BUREAU OF TRAFFIC IS REQUIRED FOR ALL RAMP CLOSURES.
- ⑦ THE RAMP CLOSURE ADVANCE INFORMATION SIGNS SHALL BE ERECTED IF THE CLOSURE TIME EXCEEDS TWENTY-FOUR (24) HOURS. ADDITIONAL ADVANCE WARNING SIGNS ON EXIT GUIDE SIGNING WILL BE REQUIRED FOR EXIT RAMP CLOSURES THAT EXCEED TWENTY-FOUR (24) HOURS IN LENGTH.
- ⑧ ROAD CONSTRUCTION AHEAD SIGNS MAY BE OMITTED WHEN THIS DETAIL IS USED IN CONJUNCTION WITH OTHER TRAFFIC CONTROL THAT ALREADY INCLUDES A ROAD CONSTRUCTION AHEAD SIGN.
- ⑨ ARTERIAL ROAD CONSTRUCTION AHEAD SIGNS MAY BE OMITTED ON CLOSURES LESS THAN 24 HOURS IN DURATION.

ALL DIMENSIONS ARE IN INCHES (MILLIMETERS) UNLESS OTHERWISE SHOWN.

FILE NAME =	USER NAME = gorengautab	DESIGNED - DWS	REVISED - DWS/JAF 12-02
ca:\pwork\pwork\gorengautab\d0318599\106713-sht-plan.dgn		DRAWN -	REVISED - JAF 02-06
	PLOT SCALE = 100.0000' / 1"	CHECKED -	REVISED - SPB 01-07
	PLOT DATE = 12/13/2012	DATE - 02-83	REVISED - SPB 12-09

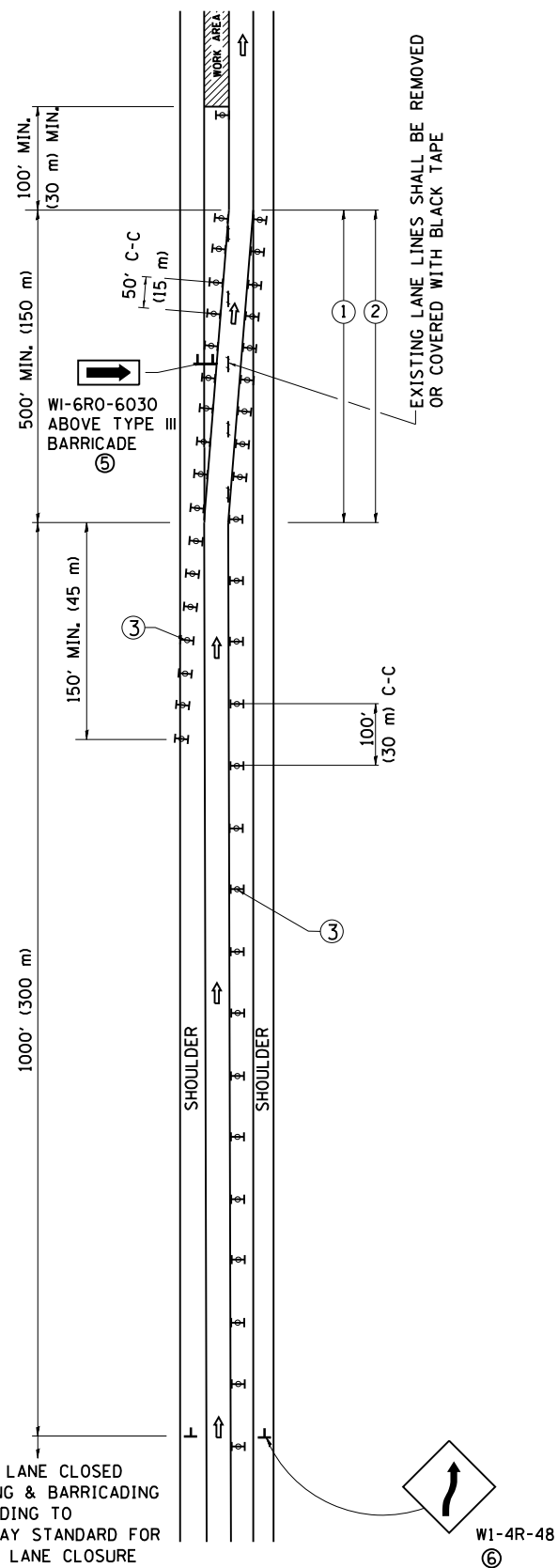
**STATE OF ILLINOIS  
DEPARTMENT OF TRANSPORTATION**

**FREEWAY ENTRANCE AND EXIT RAMP  
CLOSURE DETAILS**

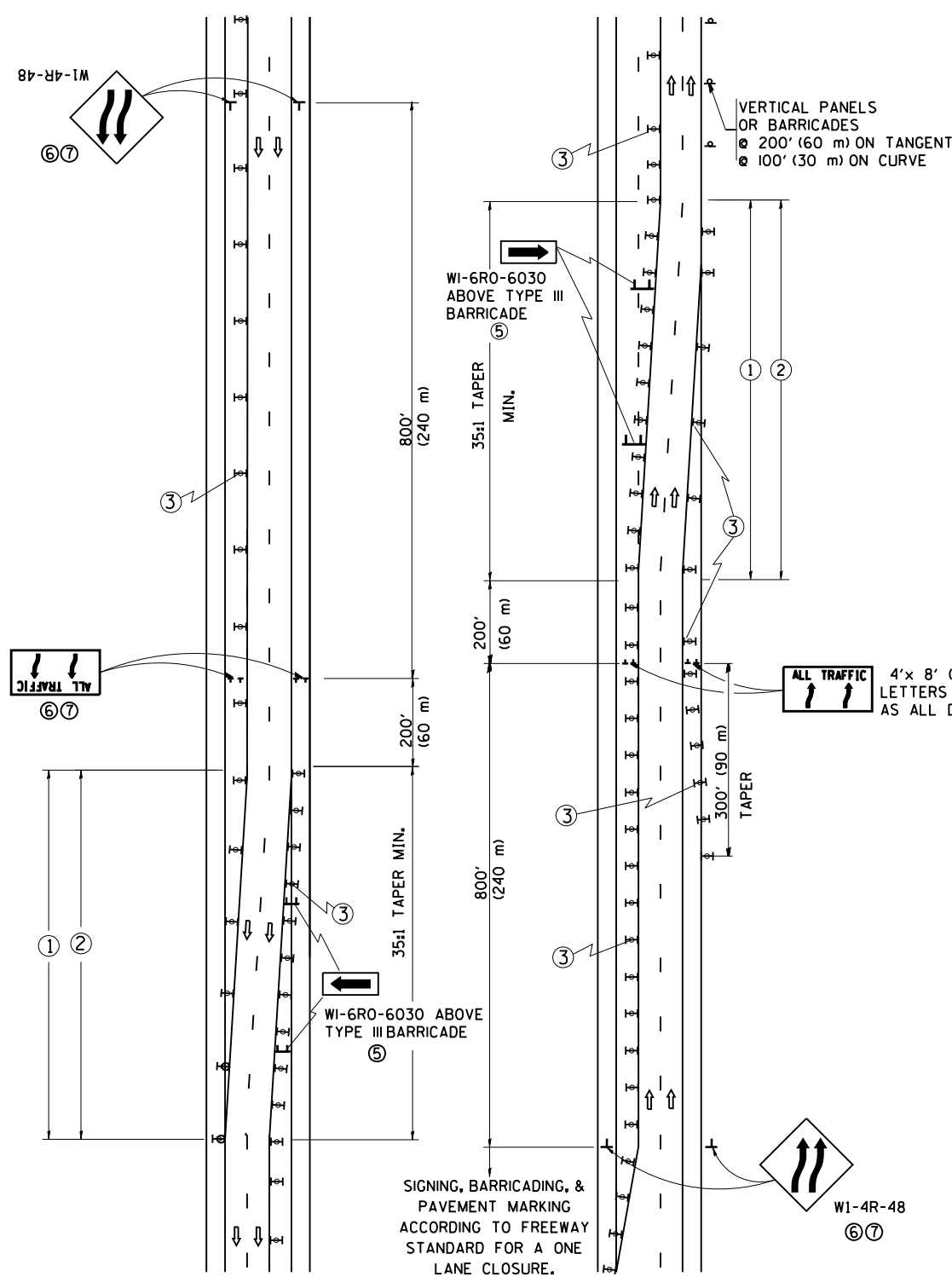
SCALE: NONE SHEET NO. 1 OF 1 SHEETS STA. TO STA.

F.A.I. RTE.	SECTION	COUNTY	TOTAL SHEETS	SHEET NO.
94	2012-0641	COOK	18	14
TC-08		CONTRACT NO. 60V77		
FED. ROAD DIST. NO. 1 ILLINOIS FED. AID PROJECT				

# SINGLE LANE WEAVE



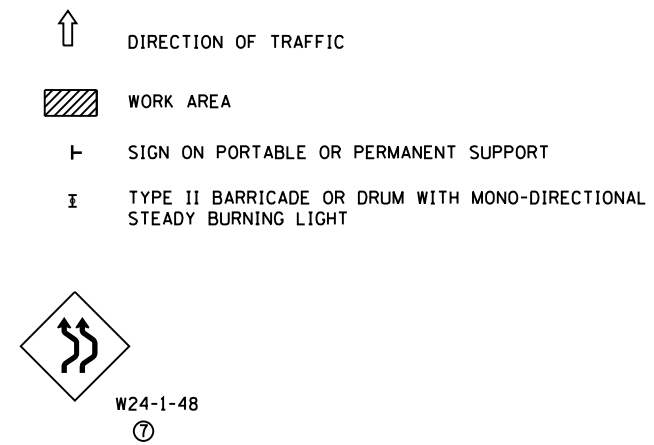
# MULTI-LANE WEAVE



### GENERAL NOTES

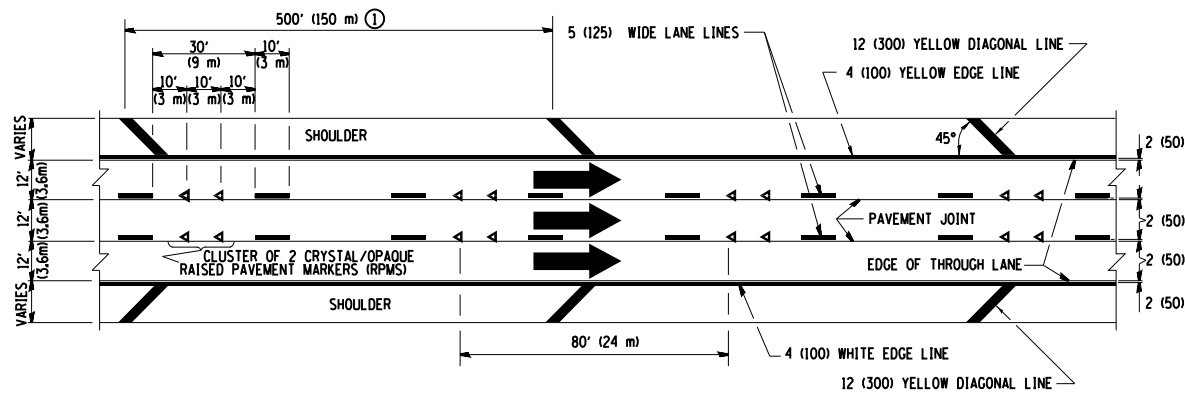
- ① EXISTING CONFLICTING PAVEMENT MARKING LINES SHALL BE REMOVED. PAVEMENT MARKING REMOVAL SHALL NOT BE REQUIRED FOR SINGLE LANE WEAVES UNDER 24 HOURS IN DURATION.
- ② CONTINUOUS REFLECTIVE TEMPORARY PAVEMENT MARKING TAPE SHALL BE PLACED THROUGHOUT THE TAPER AND FOR 300' (90 m) ALONG SIDE THE WORK AREA WHERE THE CLOSURE TIME IS GREATER THAN FOURTEEN DAYS. THE LEFT EDGE LINE SHALL BE YELLOW AND THE RIGHT EDGE LINE SHALL BE WHITE. FOR MULTI-LANE WEAVES LANE LINES SHALL BE 5 INCH, 10'-30' (3 m-9 m) SKIP DASH, WHITE.
- ③ PLASTIC DRUMS WITH STEADY BURN LIGHTS AT 50' (15 m) C-C SPACING IN TAPERS AND 100' (30 m) C-C SPACING IN TANGENTS.
- ④ ALL SIGNS SHALL BE POST MOUNTED IF THE CLOSURE TIME EXCEEDS FOUR DAYS.
- ⑤ IF A TYPE III BARRICADE WITH AN ATTACHED SIGN PANEL WHICH MEETS NCHRP 350 IS NOT AVAILABLE, THE SIGNS MAY BE MOUNTED ON NCHRP 350 TEMPORARY SIGN SUPPORTS. TYPE III BARRICADES MAY BE OMITTED FOR SINGLE-LANE WEAVES UNDER 24-HOURS IN DURATION. WI-6 SIGNS WILL STILL BE REQUIRED. IF THE WIDTH OF OFFSET IS LESS THAN 6' THEN THE TYPE III BARRICADE WITH ATTACHED ARROW SIGN PANEL CAN BE ELIMINATED IN THE TAPER AREAS.
- ⑥ WHEN THE LENGTH OF THE SHIFTED SEGMENT (DISTANCE BETWEEN WEAVE POINTS) IS LESS THAN 1500', DOUBLE REVERSE CURVE SIGNS (W24-1) SHOULD BE USED INSTEAD OF THE REVERSE CURVE (W1-4) SIGNS. ARROWS ON THE 4'X8' "ALL TRAFFIC" SIGNS SHALL BE THE SAME SHAPE.
- ⑦ THE NUMBER OF ARROWS ON THESE SIGNS SHALL MATCH THE NUMBER OF LANES OPEN TO TRAFFIC.

### SYMBOLS



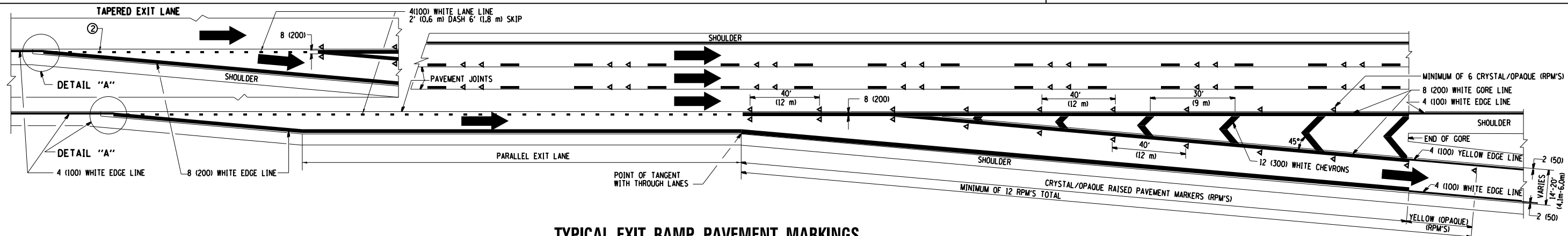
ALL DIMENSIONS ARE IN INCHES (MILLIMETERS) UNLESS OTHERWISE SHOWN

FILE NAME =	USER NAME = gorengautab	DESIGNED - DWS	REVISED - JAF 01-03	<b>STATE OF ILLINOIS DEPARTMENT OF TRANSPORTATION</b>	<b>TRAFFIC CONTROL DETAILS FOR FREEWAY SINGLE &amp; MULTI-LANE WEAVE</b>			F.A.I. RTE. 94	SECTION 2012-0641	COUNTY COOK	TOTAL SHEETS 18	SHEET NO. 15
et:\pw\work\p1\dot\gorengautab\d0318599\106713-sht-plan.dgn	PLOT SCALE = 100.0000' / in.	DRAWN -	REVISED - JAF 02-06		SCALE: NONE	SHEET NO. 1 OF 1 SHEETS	STA. TO STA.	TC-09		CONTRACT NO. 60V77		
PLOT DATE = 12/13/2012	DATE - 02-87	CHECKED -	REVISED - SPB 01-07									
		DATE - 02-87	REVISED - SPB 12-09		FED. ROAD DIST. NO. 1 ILLINOIS FED. AID PROJECT							

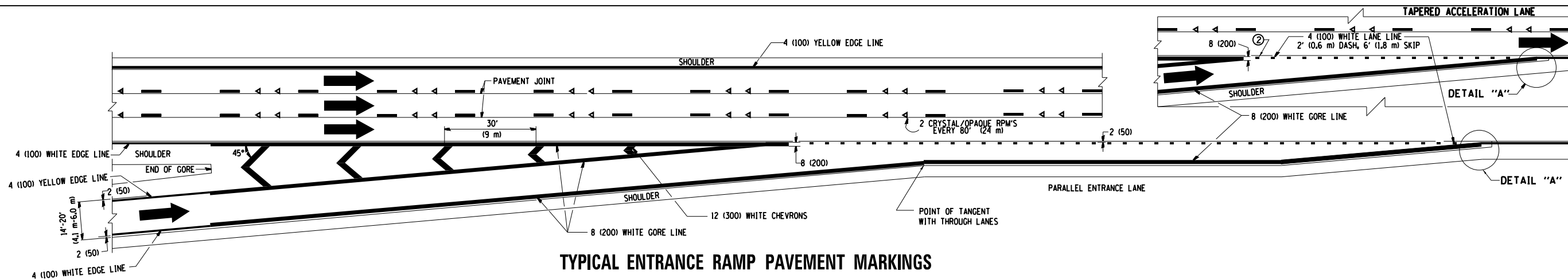


**TYPICAL EDGE LINES & LANE LINES**

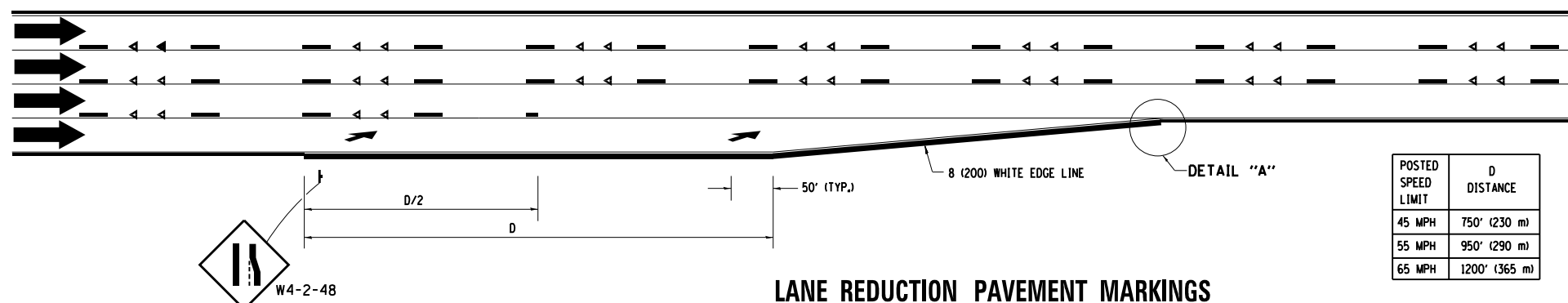
- PAVEMENT MARKING MATERIALS**
1. THERMO PLASTIC PAVEMENT MARKING LINE SHALL BE USED FOR THE EDGE LINES, GORE LINES, AND DIAGONAL LINES ON BITUMINOUS PAVEMENT ONLY.
  2. PREFORMED PLASTIC TYPE B PAVEMENT MARKING LINE SHALL BE USED FOR ALL LANE LINES ON BITUMINOUS PAVEMENT.
  3. POLYUREA PAVEMENT MARKING SHALL BE USED FOR ALL MARKINGS ON PCC.



**TYPICAL EXIT RAMP PAVEMENT MARKINGS**

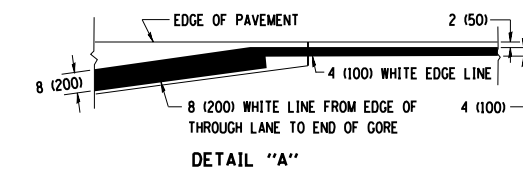


**TYPICAL ENTRANCE RAMP PAVEMENT MARKINGS**



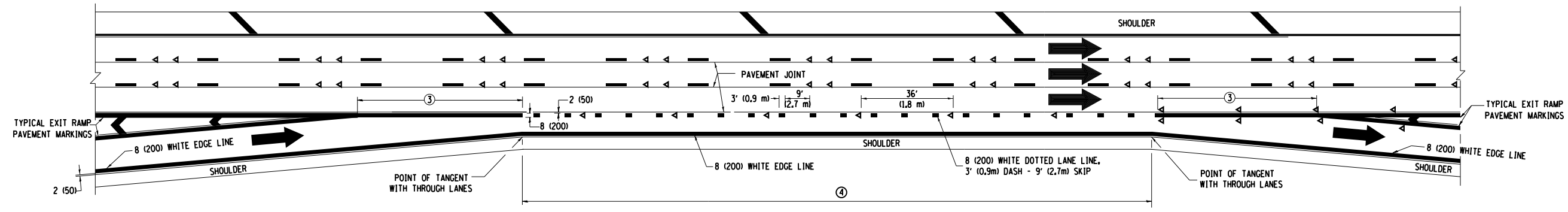
**LANE REDUCTION PAVEMENT MARKINGS**

POSTED SPEED LIMIT	D DISTANCE
45 MPH	750' (230 m)
55 MPH	950' (290 m)
65 MPH	1200' (365 m)

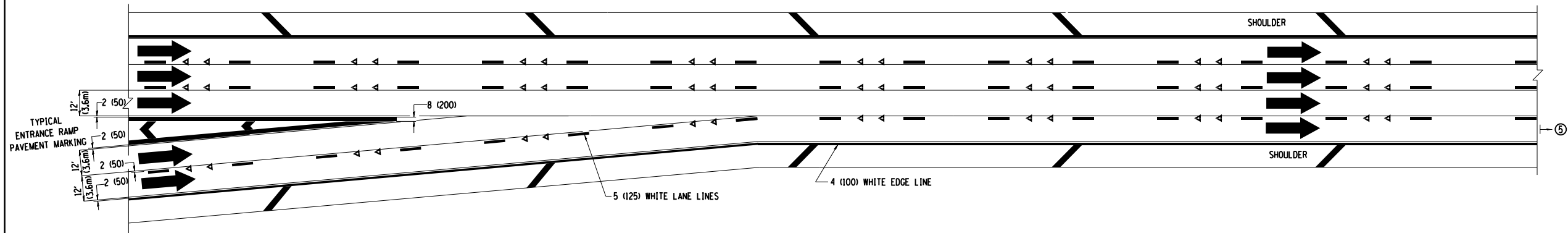


- NOTES:**
- ① THE DIAGONAL LINES SHALL BE SPACED AT 40' (12 m) C-C ACROSS ALL STRUCTURES WHICH ARE 500' (150 m) OR LESS IN LENGTH. THE DIAGONAL LINES ARE NOT REQUIRED ON SHOULDERS WHICH ARE 6' (1.8 m) OR LESS IN WIDTH.
  - ② 4" (2' DASH, 6' SKIP) MARKING ON TAPERED ENTRANCE AND EXIT RAMP SHALL BE OMITTED ON TANGENT SECTIONS.

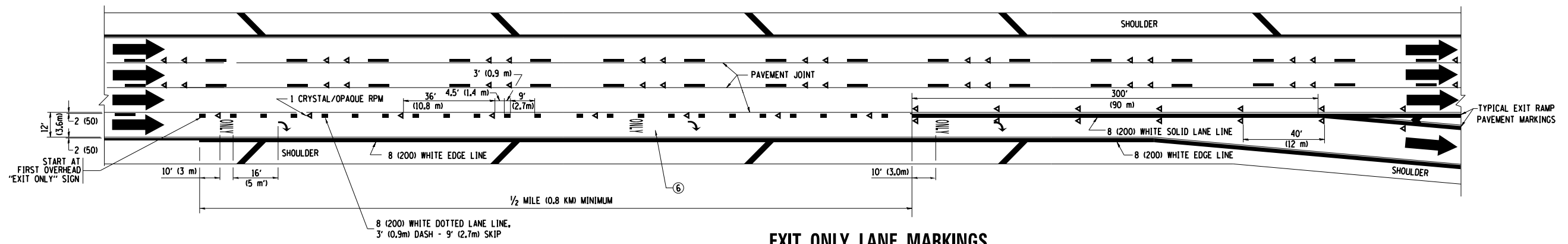




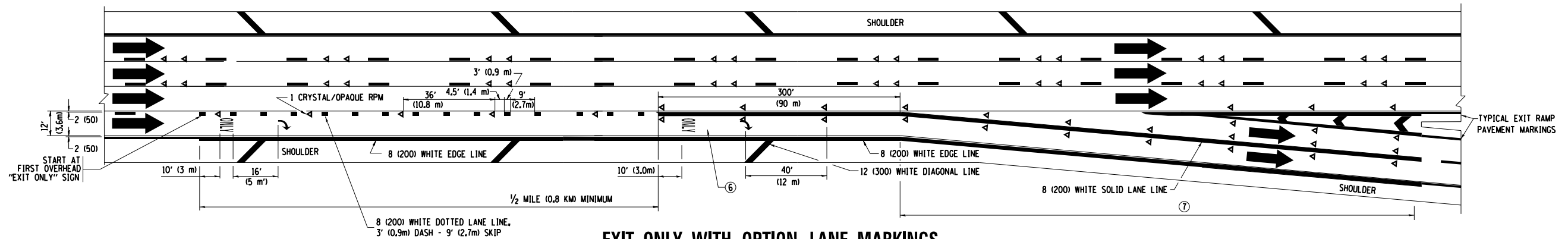
**AUXILIARY LANE MARKINGS**



**TWO LANE ENTRANCE RAMP WITH MERGE MARKINGS**



**EXIT ONLY LANE MARKINGS**

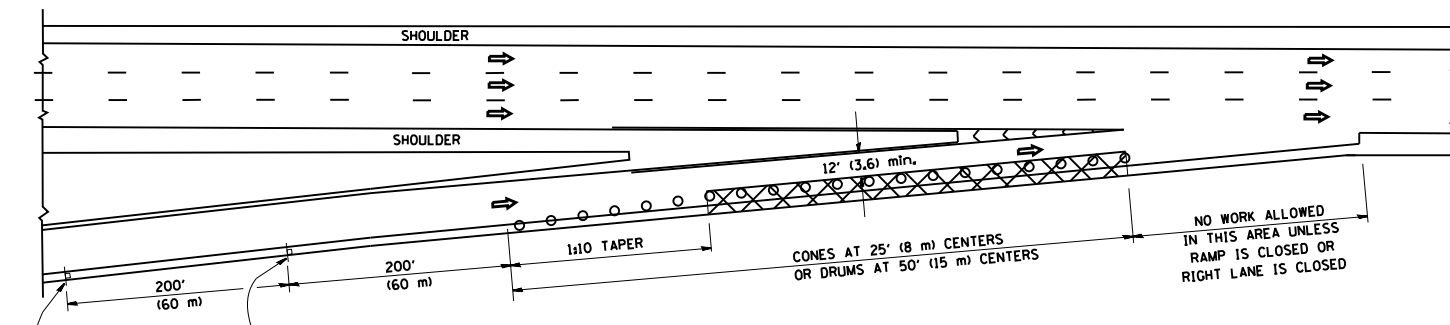


**EXIT ONLY WITH OPTION LANE MARKINGS**

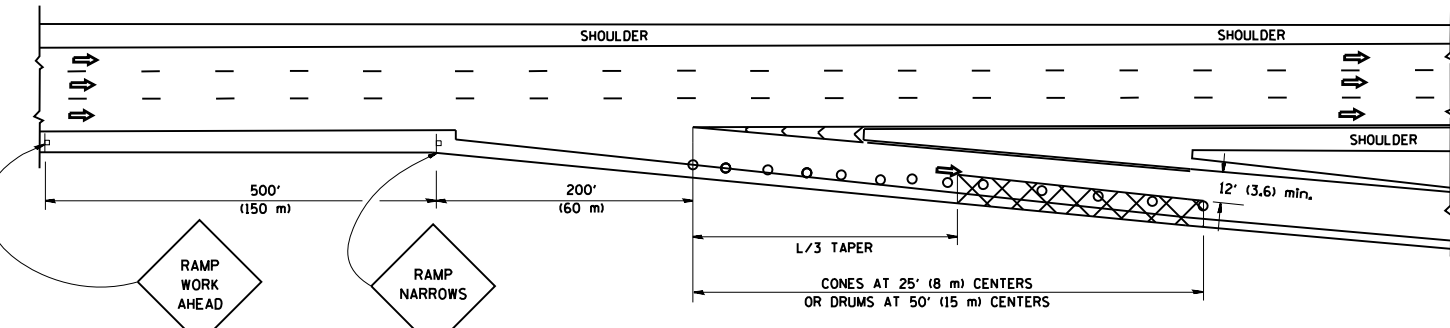
- NOTES**
- ③ OMIT WHEN LENGTH OF AUXILIARY LANE IS LESS THAN 500' (150 m).
  - ④ 8-INCH WIDE DOTTED LANE LINE MARKINGS SHALL BE USED WHEN THE LENGTH OF THE AUXILIARY LANE IS 2 MILES OR LESS.
  - ⑤ FOR TWO-LANE ENTRANCE RAMP, IF RIGHT LANE ENDS, USE TYPICAL ENTRANCE RAMP PAVEMENT MARKINGS.
  - ⑥ ONLY AND ARROWS EQUALLY SPACED, 500' (150 m) MAXIMUM SPACING. FULL SIZE LETTERS AND ARROW SHALL BE USED.
  - ⑦ CONTINUE 8" SOLID LANE LINE THROUGH EXIT TO END OF PAVED GORE.

FILE NAME =	USER NAME = gorengautab	DESIGNED - D.W.S.	REVISED - D.W.S. 07-96	<b>STATE OF ILLINOIS DEPARTMENT OF TRANSPORTATION</b>	<b>MULTI-LANE FREEWAY PAVEMENT MARKING DETAILS</b>			F.A.I. RTE. 94	SECTION 2012-0641	COUNTY COOK	TOTAL SHEETS 18	SHEET NO. 17
ei:\pwwork\pwwork\gorengautab\d0318599\106713-sht-plan.dgn	PLOT SCALE = 100.0000' / in.	DRAWN -	REVISED - J.A.F. 02-06		SCALE: NONE	SHEET NO. 2 OF 2 SHEETS	STA.	TO STA.	<b>TC-12</b>		CONTRACT NO. 60V77	
	PLOT DATE = 12/13/2012	CHECKED -	REVISED - S.P.B. 01-07		FED. ROAD DIST. NO. 1 ILLINOIS FED. AID PROJECT							
		DATE - 01-90	REVISED - S.P.B. 01-10									

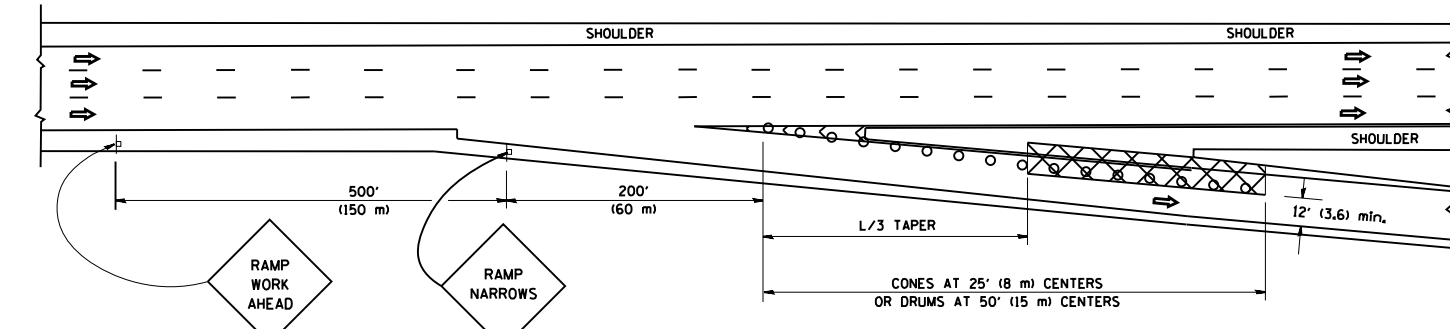
**PARTIAL RAMP CLOSURE DETAILS**



**TYPICAL ENTRANCE RAMP**



**TYPICAL EXIT RAMP**



**TYPICAL EXIT RAMP**

**SYMBOLS**

- ACTIVE WORK AREA
- SIGN ON PORTABLE OR PERMANENT SUPPORT
- FLAGGER WITH CONTROL SIGN
- TYPE II BARRICADE, DRUM OR VERTICAL BARRICADE WITH STEADY BURN MONO-DIRECTIONAL LIGHT
- CONE, DRUM OR BARRICADE

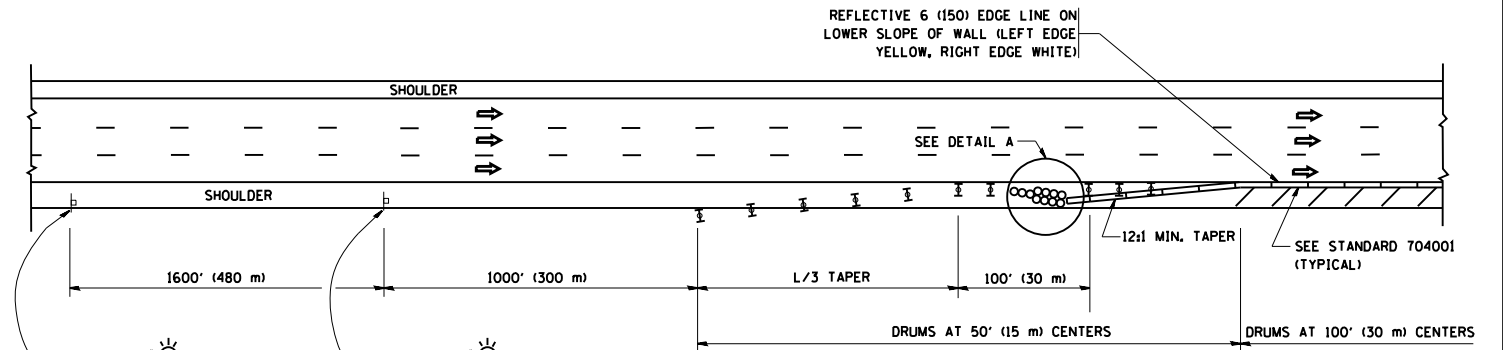
**GENERAL NOTES**

1. THE "L" DISTANCE EQUALS:
 

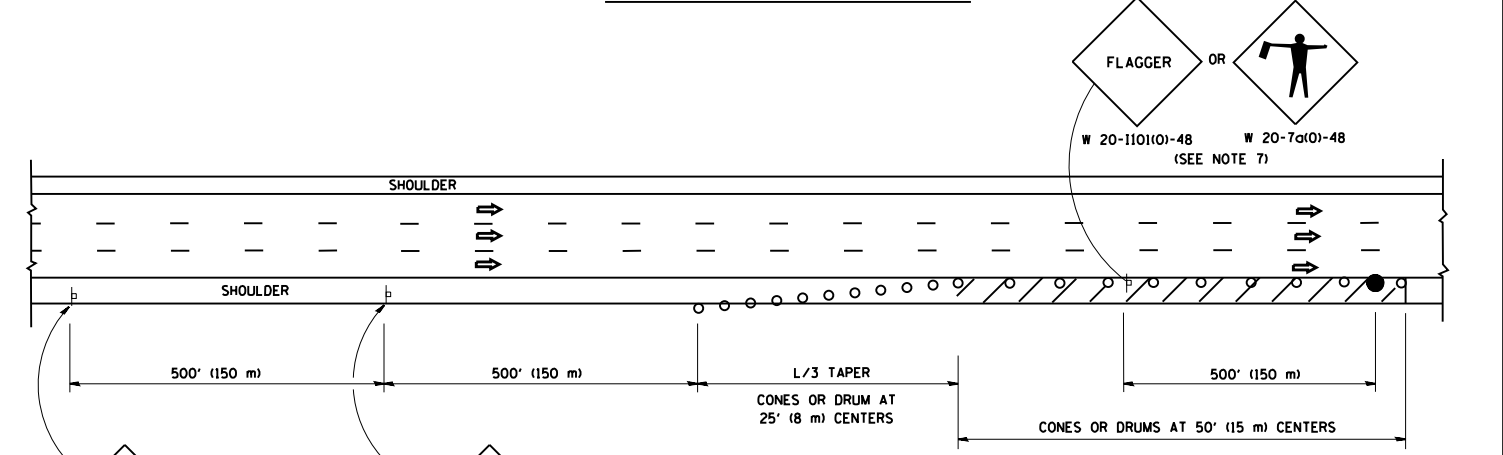
SPEED LIMIT	FORMULAS
45 mph (80 km/h) OR GREATER:	METRIC    ENGLISH
	$L=0.65(WXS)$ $L=(WXS)$

W = WIDTH OF OFFSET IN FEET (METERS)  
S = NORMAL POSTED SPEED MPH (KM/H)
2. PLASTIC DRUMS WITH HIGH PERFORMANCE REFLECTIVE SHEETING AND STEADY BURNING LIGHTS ARE REQUIRED FOR ALL NIGHTTIME CLOSURES.
3. ALL SIGNS SHALL BE POST MOUNTED IF THE CLOSURE TIME EXCEEDS FOUR DAYS.
4. FLASHING LIGHTS SHALL BE USED DURING THE HOURS OF DARKNESS AND SHALL BE INSTALLED ABOVE THE FIRST TWO SETS OF SIGNS.

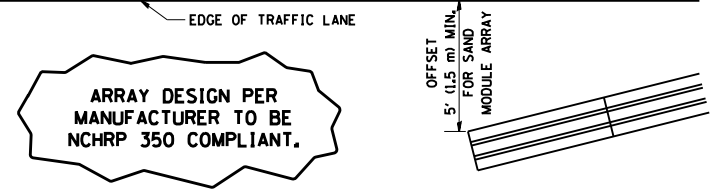
**SHOULDER CLOSURE DETAILS**



**PERMANENT SHOULDER CLOSURE**



**DAYTIME SHOULDER CLOSURE**



**DETAIL "A" IMPACT ATTENUATOR, TEMPORARY (SEE NOTE 5)**

5. THE IMPACT ATTENUATOR, TEMPORARY IS NOT REQUIRED WHEN THE TEMPORARY CONCRETE BARRIER WALL IS PROTECTED BY OR IS TIED INTO THE EXISTING GUARDRAIL. IF OFFSET IS LESS THAN 5 FEET USE NARROW USE TYPE DEVICE TO MEET NCHRP350.
6. AUTHORIZATION FROM THE DISTRICT'S BUREAU OF TRAFFIC IS REQUIRED FOR ALL FREEWAY CLOSURES.
7. THE FLAGGER AND FLAGGER SIGN ARE REQUIRED AT THE ABOVE WORK SITES WHEN:
  - a. FOUR OR MORE WORK VEHICLES ENTER THE TRAFFIC LANES IN A ONE HOUR PERIOD.
  - b. THE WORK AVTIVITY REQUIRES FREQUENT ENCRANCHMENT INTO THE LANE OPEN TO TRAFFIC.

THE FLAGGER SHALL BE STATIONED APPROXIMATELY 100' (30 m) TO 200' (60 m) IN ADVANCE OF THE WORKERS.

ALL DIMENSIONS ARE IN INCHES (MILLIMETERS) UNLESS OTHERWISE SHOWN.

FILE NAME =	USER NAME = gorengautab	DESIGNED -	REVISED - 04-03	<b>STATE OF ILLINOIS DEPARTMENT OF TRANSPORTATION</b>	<b>TRAFFIC CONTROL DETAILS FOR FREEWAY SHOULDER CLOSURES AND PARTIAL RAMP CLOSURES</b>			F.A.I. RTE.	SECTION	COUNTY	TOTAL SHEETS	SHEET NO.
et:\pw\work\p\dot\gorengautab\0318599\106713-sht-plan.dgn	PLOT SCALE = 100.0000' / 1"	DRAWN - D.W.S.	REVISED - J.A.F. 12-06		94	2012-0641	COOK	18	18			
PLOT DATE = 12/13/2012	DATE - 11-96	CHECKED -	REVISED - S.P.B. 01-07		TC-17			CONTRACT NO. 60V77				
		REVISD - S.P.B. 12-09			SCALE: NONE	SHEET NO. 1 OF 1 SHEETS	STA. TO STA.	FED. ROAD DIST. NO. 1 ILLINOIS FED. AID PROJECT				