

INDEX OF SHEETS

- 1 COVER SHEET
- 2 INDEX OF SHEETS, HIGHWAY STANDARDS, GENERAL NOTES, AND COMMITMENTS
- 3-4 SUMMARY OF QUANTITIES
- 5 TYPICAL SECTIONS
- 6 ALIGNMENT, TIES AND BENCHMARKS
- 7-8 EXISTING PLAN AND REMOVALS
- 9-10 ROADWAY PLAN
- 11-15 SUGGESTED STAGES OF CONSTRUCTION AND TRAFFIC CONTROL
- 16 EROSION AND SEDIMENT CONTROL PLAN
- 17 PAVEMENT MARKING AND LANDSCAPE PLAN
- 18-23 TRAFFIC SIGNAL DISTRICT DETAILS
- 24-25 TEMPORARY TRAFFIC SIGNAL PLAN
- 26 EXISTING INTERCONNECT PLAN
- 27-36 BOX CULVERT REPLACEMENT PLAN 1 (6' x 4')
- 37-46 BOX CULVERT REPLACEMENT PLAN 2 (4' x 2.5')
- 47 STORM SEWER CONNECTION TO EXISTING SEWER (BD07)
- 48 CURB OR CURB AND GUTTER REMOVAL AND REPLACEMENT (BD24)
- 49-52 REMOVE AND REERECT GUARDRAIL (BM21)
- 53 TRAFFIC CONTROL AND PROTECTION FOR SIDE ROADS, INTERSECTIONS AND DRIVEWAYS (TC10)
- 54 RAISED REFLECTIVE PAVEMENT MARKERS (SNOW PLOW RESISTANT) (TC11)
- 55 DISTRICT ONE TYPICAL PAVEMENT MARKINGS (TC13)
- 56 TRAFFIC CONTROL AND PROTECTION AT TURN BAYS (TO REMAIN OPEN TO TRAFFIC) (TC14)
- 57 PAVEMENT MARKING LETTERS AND SYMBOLS FOR TRAFFIC STAGING (TC16)
- 58 ARTERIAL ROAD INFORMATION SIGN (TC22)
- 59 DRIVEWAY ENTRANCE SIGNING (TC26)
- 60 CROSS SECTIONS - WILLOW ROAD

LIST OF ILLINOIS DOT HIGHWAY STANDARDS

- 000001-06 STANDARD SYMBOLS, ABBREVIATIONS, AND PATTERNS
- 001001-02 AREAS OF REINFORCEMENT BARS
- 001006 DECIMAL OF AN INCH AND OF A FOOT
- 420701-02 PAVEMENT FABRIC
- 442101-07 PATCHING, CLASS B
- 515001-03 NAME PLATE FOR BRIDGES
- 602001-02 CATCH BASIN, TYPE A
- 604086-02 TYPE 23 FRAME AND GRATE
- 606001-04 CONCRETE CURB TYPE B AND COMBINATION CONCRETE CURB AND GUTTER
- 630001-10 STEEL PLATE BEAM GUARDRAIL
- 701301-04 LANE CLOSURE, 2L, 2W, SHORT TIME OPERATIONS
- 701421-05 LANE CLOSURE, MULTILANE, DAY OPERATIONS ONLY, FOR SPEEDS >= 45 MPH TO 55 MPH
- 701427-01 LANE CLOSURE, MULTILANE, FOR SPEEDS < 40 MPH INTERMITTENT OR MOVING OPER., FOR SPEEDS < 45 MPH
- 701501-06 URBAN LANE CLOSURE, 2L, 2W, UNDIVIDED
- 701601-08 URBAN LANE CLOSURE, MULTILANE, 1W OR 2W WITH NON TRAVERSABLE MEDIAN
- 701701-08 URBAN LANE CLOSURE, MULTILANE INTERSECTION
- 701801-05 LANE CLOSURE MULTILANE 1W OR 2W CROSSWALK OR SIDEWALK CLOSURE
- 701901-02 TRAFFIC CONTROL DEVICES
- 704001-07 TEMPORARY CONCRETE BARRIER
- 720001-01 SIGN PANEL MOUNTING DETAILS
- 720006-03 SIGN PANEL ERECTION DETAILS
- 780001-03 TYPICAL PAVEMENT MARKINGS
- 781001-03 TYPICAL APPLICATIONS RAISED REFLECTIVE PAVEMENT MARKERS
- 880001-01 SPAN WIRE MOUNTED SIGNALS AND FLASHING BEACON INSTALLATION

GENERAL NOTES

- 1. BEFORE STARTING ANY EXCAVATION, THE CONTRACTOR SHALL CALL "J.U.L.I.E." AT 800-892-0123 FOR FIELD LOCATIONS OF BURIED ELECTRIC, TELEPHONE, AND GAS FACILITIES. 48 HOUR NOTIFICATION IS REQUIRED.
- 2. THE CONTRACTOR SHALL COORDINATE CONSTRUCTION ACTIVITIES WITH THE UTILITY COMPANIES, AND THE CITY OF NORTHBROOK.
- 3. THE CONTRACTOR WILL NOT BE ALLOWED TO SET UP A YARD OR FIELD OFFICE ON STATE PROPERTY WITHOUT WRITTEN PERMISSION FROM THE DEPARTMENT.
- 4. ALL DAMAGE TO EXISTING PAVEMENT MARKING OR RAISED REFLECTIVE PAVEMENT MARKERS OUTSIDE THE REMOVAL LINE SHOWN ON THE PLANS SHALL BE REPLACED AT THE CONTRACTORS EXPENSE. NO ADDITIONAL COST TO THE DEPARTMENT.
- 5. BEFORE BEGINNING ANY WORK, THE CONTRACTOR SHALL RETAIN AND RECORD FOR FUTURE REFERENCES, ALL EXISTING PAVEMENT MARKING LINES AND RAISED REFLECTIVE PAVEMENT MARKERS IN ORDER THAT THESE LOCATIONS CAN BE RE-ESTABLISHED FOR STRIPING. EXACT LOCATIONS OF ALL STRIPING SHALL BE AS DIRECTED BY THE ENGINEER.
- 6. THE CONTRACTOR SHALL BE RESPONSIBLE FOR VERIFYING ALL DIMENSIONS AND CONDITIONS EXISTING IN THE FIELD PRIOR TO CONSTRUCTION AND ORDERING MATERIALS.
- 7. THE CONTRACTOR SHALL CONTACT THE DISTRICT ONE TRAFFIC CONTROL SUPERVISOR AT (847) 705-4470 A MINIMUM OF 72 HOURS IN ADVANCE OF BEGINNING WORK.
- 8. THE CONTRACTOR SHALL BE REQUIRED TO PROVIDE ACCESS TO ABUTTING PROPERTY AT ALL TIMES DURING THE CONSTRUCTION OF THIS PROJECT.
- 9. DO NOT SCALE PLANS FOR CONSTRUCTION DIMENSIONS.
- 10. DOUBLE LANE MARKERS ARE TO BE USED AS SHOWN ON THE DISTRICT ONE DETAIL "TYPICAL APPLICATIONS - RAISED REFLECTIVE PAVEMENT MARKERS (SNOW-PLOW RESISTANT)" SHOWN ON THE PLANS.
- 11. FRAMES AND GRATES ADJUSTMENT OF PRIVATE UTILITIES WITHIN THE LIMITS OF THE IMPROVEMENTS SHALL BE DONE BY THEIR RESPECTIVE OWNERS AND ARE NOT PART OF THIS CONTRACT.
- 12. THE CONTRACTOR SHALL PLACE PROPOSED PAVEMENT MARKINGS IN ACCORDANCE WITH DISTRICT 1 TYPICAL PAVEMENT MARKINGS DETAIL (TC-13).
- 13. THE CONTRACTOR SHALL REMOVE AND DISPOSE OF ALL LOGS, SHRUBS, BUSHES, SAPLINGS, UNDERBRUSH OR DEBRIS ACCORDING TO SECTION 201 OF THE STANDARD SPECIFICATIONS AT LOCATIONS REQUIRING ACCESS TO THE SUBSTRUCTURE. THIS WORK WILL NOT BE PAID FOR SEPARATELY, BUT THE COST SHALL BE CONSIDERED AS INCLUDED IN THE CONTRACT AND NO ADDITIONAL COMPENSATION WILL BE ALLOWED.
- 14. ANY ABANDONED UTILITY OR SEWER ENCOUNTERED DURING CONSTRUCTION SHALL BE PLUGGED AS DIRECTED BY THE ENGINEER AND ABANDONED IN PLACE. THIS WORK SHALL BE INCIDENTAL TO THE COST OF THE CONTRACT.
- 15. DURING CONSTRUCTION OPERATIONS, IF ANY LOOSE MATERIAL IS DEPOSITED IN THE FLOW LINE OF DRAINAGE STRUCTURES SUCH THAT THE NATURAL FLOW OF WATER IS OBSTRUCTED, THE MATERIAL SHALL BE REMOVED AT THE CLOSE OF EACH WORKING DAY. AT THE CONCLUSION OF CONSTRUCTION OPERATIONS, ALL UTILITY STRUCTURES SHALL BE FREE OF DUST AND DEBRIS. THE WORK SPECIFIED ABOVE WILL NOT BE PAID FOR SEPARATELY BUT SHALL BE INCIDENTAL IN THE COST OF THE CONTRACT.
- 16. IF CONFLICTS OCCUR AND RELOCATION OF THE NEW FACILITIES IS NOT FEASIBLE, THE CONTRACTOR SHALL WORK WITH THE ENGINEER TO MAKE ARRANGEMENTS WITH THE UTILITY COMPANIES TO HAVE THE AFFECTED UTILITIES PROTECTED OR RELOCATED. NO ADDITIONAL COMPENSATION WILL BE ALLOWED AS A RESULT OF ANY ADDITIONAL COSTS.
- 17. THIS PROJECT REQUIRES A US ARMY CORPS OF ENGINEERS (USACE) 404 PERMIT THAT WILL BE SECURED BY THE DEPARTMENT. AS A CONDITION OF THIS PERMIT, THE CONTRACTOR WILL NEED TO SUBMIT AN IN-STREAM WORK PLAN TO THE DEPARTMENT FOR APPROVAL. GUIDELINES ON ACCEPTABLE IN-STREAM WORK TECHNIQUES CAN BE FOUND ON THE USACE WEBSITE. THE USACE DEFINES AND DETERMINES IN-STREAM WORK. THE COST OF ALL MATERIALS AND LABOR NECESSARY TO COMPLY WITH THE ABOVE PROVISIONS TO PREPARE AND IMPLEMENT AN IN-STREAM WORK PLAN WILL NOT BE PAID FOR SEPARATELY, BUT SHALL BE CONSIDERED AS INCLUDED IN THE UNIT BID PRICES OF THE CONTRACT AND NO ADDITIONAL COMPENSATION WILL BE ALLOWED.

FILE NAME : P:\2011\ME11887_Ver-Vor-Ph1\CAD\W08-W11\W-Rd1\Shs\B2-016W04-sh1-gannote.dgn
 PLOT SCALE : 2.8989 / 1 IN.
 PLOT NAME : Millennium Professional Services



200 22ND Street, Suite 216, Lombard, IL 60118
 630.785.8110 voice, 630.839.2544 fax
 www.mps-ill.com
MILLENNIA PROFESSIONAL SERVICES

DESIGNED	TYN	REVISED	02/15/13
DRAWN	MJW	REVISED	
CHECKED	TYN	REVISED	
DATE	2/15/2013	REVISED	

STATE OF ILLINOIS
DEPARTMENT OF TRANSPORTATION

WILLOW ROAD
 SCALE: N/A SHEET NO. OF SHEETS STA. TO STA.

INDEX OF SHEETS, LIST OF IDOT
HIGHWAY STANDARD, GENERAL NOTES
AND COMMITMENTS

F.A.P. RTE.	SECTION	COUNTY	TOTAL SHEETS	SHEET NO.
305	1920.01-B-R	COOK	60	2
CONTRACT NO. 60W04				

URBAN
100% STATE

SUMMARY OF QUANTITIES

CONSTRUCTION
TYPE CODE

CODE NO.	ITEM DESCRIPTION	UNIT	TOTAL QUANTITY	CONSTRUCTION TYPE CODE	
				ROADWAY 0004	STRUCTURE 016-1292 0040
20201200	REMOVAL AND DISPOSAL OF UNSUITABLE MATERIAL	CU YD	922	273	649
20101000	TEMPORARY FENCE	FOOT	300	300	
20700220	POROUS GRANULAR EMBANKMENT	CU YD	761	224	537
25000210	SEEDING, CLASS 2A	ACRE	0.25	0.25	
21101615	TOPSOIL FURNISH AND PLACE, 4"	SO YD	348	348	
25200110	SODDING, SALT TOLERANT	SO YD	348	348	
28000305	TEMPORARY DITCH CHECKS	FOOT	32	32	
25000310	SEEDING, CLASS 4	ACRE	0.25	0.25	
28000400	PERIMETER EROSION BARRIER	FOOT	450	450	
28000250	TEMPORARY EROSION CONTROL SEEDING	POUND	25	25	
28000510	INLET FILTERS	EACH	12	12	
25100630	EROSION CONTROL BLANKET	SO YD	428	428	
28100107	STONE RIPRAP, CLASS A4	SO YD	70.1	70.1	
28200200	FILTER FABRIC	SO YD	70.1	70.1	
31100500	SUBBASE GRANULAR MATERIAL, TYPE A 6"	SO YD	413.7	413.7	
40600200	BITUMINOUS MATERIALS (PRIME COAT)	TON	0.2	0.2	
40600300	AGGREGATE (PRIME COAT)	TON	0.2	0.2	
40600635	LEVELING BINDER MACHINE METHOD, N70	TON	17.4	17.4	
40603595	POLYMERIZED HOT-MIX ASPHALT SURFACE COURSE, MIX "F", N90	TON	40.5	40.5	
42001200	PAVEMENT FABRIC	SO YD	413.7	413.7	
42300400	PORTLAND CEMENT CONCRETE DRIVEWAY PAVEMENT, 8 INCH	SO YD	136.1	136.1	
42400200	PORTLAND CEMENT CONCRETE SIDEWALK 5 INCH	SO FT	748	748	
44000100	PAVEMENT REMOVAL	SO YD	1493.7	1493.7	
44000200	DRIVEWAY PAVEMENT REMOVAL	SO YD	136.1	136.1	
44000500	COMBINATION CURB AND GUTTER REMOVAL	FOOT	2339	2339	
44000600	SIDEWALK REMOVAL	SO FT	748	748	
44003100	MEDIAN REMOVAL	SO FT	10483	10483	
44200976	CLASS B PATCHES, TYPE IV, 10 INCH	SO YD	413.7	413.7	
44201297	DOWEL BARS 1"	EACH	186	186	
44213200	SAW CUTS	FOOT	166	166	
44213204	TIE BARS 3/4"	EACH	186	186	
50100300	REMOVAL OF EXISTING STRUCTURES NO. 1	EACH	1	1	
50100400	REMOVAL OF EXISTING STRUCTURES NO. 2	EACH	1	1	

URBAN
100% STATE

SUMMARY OF QUANTITIES

CONSTRUCTION
TYPE CODE

CODE NO.	ITEM DESCRIPTION	UNIT	TOTAL QUANTITY	CONSTRUCTION TYPE CODE	
				ROADWAY 0004	STRUCTURE 016-1292 0040
50300300	PROTECTIVE COAT	SO FT	11179.8	11179.8	
50800205	REINFORCEMENT BARS, EPOXY COATED	POUND	33,500	9810	23,690
50800515	BAR SPLICERS	EACH	70	30	40
51500100	NAME PLATES	EACH	1		1
54003000	CONCRETE BOX CULVERTS	CU YD	138.5	40.4	98.1
550A0050	STORM SEWERS, CLASS A, TYPE 1 12"	FOOT	25	25	
60201330	CATCH BASINS, TYPE A, 4'-DIAMETER, TYPE 23 FRAME AND GRATE	EACH	1	1	
60500060	REMOVING INLETS	EACH	1	1	
60618300	CONCRETE MEDIAN SURFACE, 4 INCH	SO FT	8637.9	8637.9	
60619200	CONCRETE MEDIAN, TYPE SB-6.06	SO FT	891	891	
60603800	COMBINATION CONCRETE CURB AND GUTTER, TYPE B-6.12	FOOT	665.5	665.5	
60604400	COMBINATION CONCRETE CURB AND GUTTER, TYPE B-6.18	FOOT	836	836	
60605000	COMBINATION CONCRETE CURB AND GUTTER, TYPE B-6.24	FOOT	307.9	307.9	
60623800	CONCRETE BARRIER MEDIAN	SO FT	353.1	353.1	
63301210	REMOVE AND REERECT STEEL PLATE BEAM GUARDRAIL, TYPE A	FOOT	162.5	162.5	
67000400	ENGINEER'S FIELD OFFICE, TYPE A	CAL MO	6	6	
67100100	MOBILIZATION	L SUM	1	1	
70300520	PAVEMENT MARKING TAPE, TYPE III, 4"	FOOT	22122	22122	
70300540	PAVEMENT MARKING TAPE, TYPE III 6"	FOOT	576	576	
70300560	PAVEMENT MARKING TAPE, TYPE III 12"	FOOT	157	157	
70300570	PAVEMENT MARKING TAPE, TYPE III 24"	FOOT	103	103	
70301000	WORK ZONE PAVEMENT MARKING REMOVAL	SO FT	6959	6959	
70400100	TEMPORARY CONCRETE BARRIER	FOOT	400	400	
70400200	RELOCATE TEMPORARY CONCRETE BARRIER	FOOT	400	400	
78000100	THERMOPLASTIC PAVEMENT MARKING - LETTERS AND SYMBOLS	SO FT	73	73	
78000200	THERMOPLASTIC PAVEMENT MARKING - LINE 4"	FOOT	4080	4080	
78000400	THERMOPLASTIC PAVEMENT MARKING - LINE 6"	FOOT	431	431	
78000600	THERMOPLASTIC PAVEMENT MARKING - LINE 12"	FOOT	99.4	99.4	
78000650	THERMOPLASTIC PAVEMENT MARKING - LINE 24"	FOOT	84	84	

• SPECIALTY ITEM

FILE NAME: P:\2011\111887_Ver-Yar-PH\111887\W08_Willow_Road\Sheet104-0160604-01-500.dgn
 PLOT SCALE: 1/8"=1'-0"
 USER NAME: K.Milenna



200 225D Street, Suite 216, Lombard, IL 60148
 630.785.0110 voice, 630.839.1566 fax
 www.mps-ll.com
MILLENNIA PROFESSIONAL SERVICES

DESIGNED	TVN	REVISED	
DRAWN	MJW	REVISED	
CHECKED	TVN	REVISED	
DATE	12/27/2012	REVISED	

STATE OF ILLINOIS
DEPARTMENT OF TRANSPORTATION

WILLOW ROAD

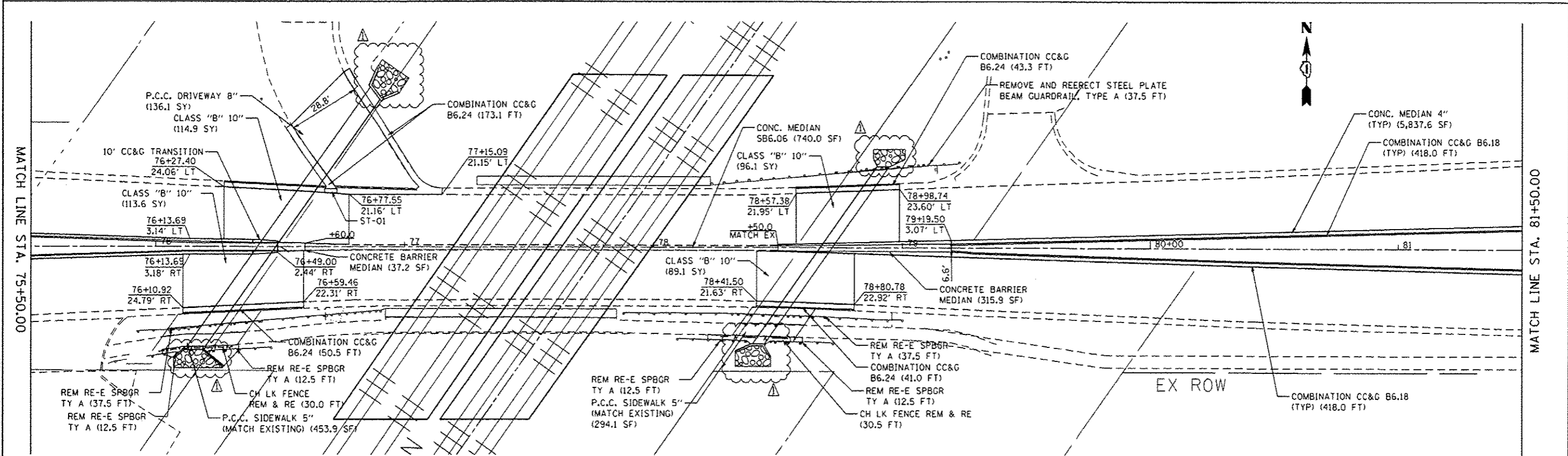
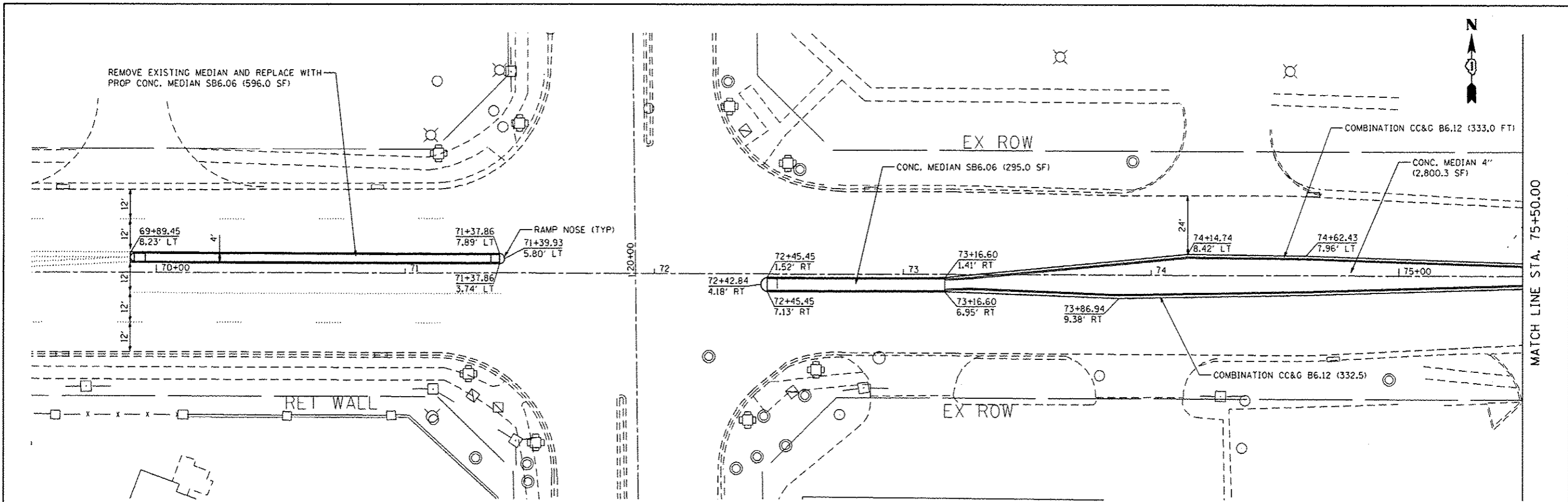
SUMMARY OF QUANTITIES

F.A.P. RTE.	SECTION	COUNTY	TOTAL SHEETS	SHEET NO.
305	1920.01-B-R	COOK	60	3
CONTRACT NO.			60W04	


Rev. 2-20-13

Rev.

FED. ROAD DIST. NO. 1 (ILLINOIS) FED. AID PROJECT
 P:\2011\111887_Ver-Yar-PH\111887\W08_Willow_Road\Sheet104-0160604-01-500.dgn



FILE NAME: P:\2011\ME11007_Ver_Vor_Plan\CADD\MOB_Willow_Rd\Shs\DISB\W84-sh-P1an-BL.DWG
 DESIGNED: TVN
 DRAWN: MJW
 CHECKED: TVN
 DATE: 2/15/2013
 MILLENIA PROFESSIONAL SERVICES


MILLENNIA PROFESSIONAL SERVICES
 200 22ND Street, Suite 216, Lombard, IL 60148
 630.783.0116 voice, 630.339.2566 fax
 www.mps-ill.com

DESIGNED	TVN	REVISED	02/15/13
DRAWN	MJW	REVISED	
CHECKED	TVN	REVISED	
DATE	2/15/2013	REVISED	

STATE OF ILLINOIS
DEPARTMENT OF TRANSPORTATION

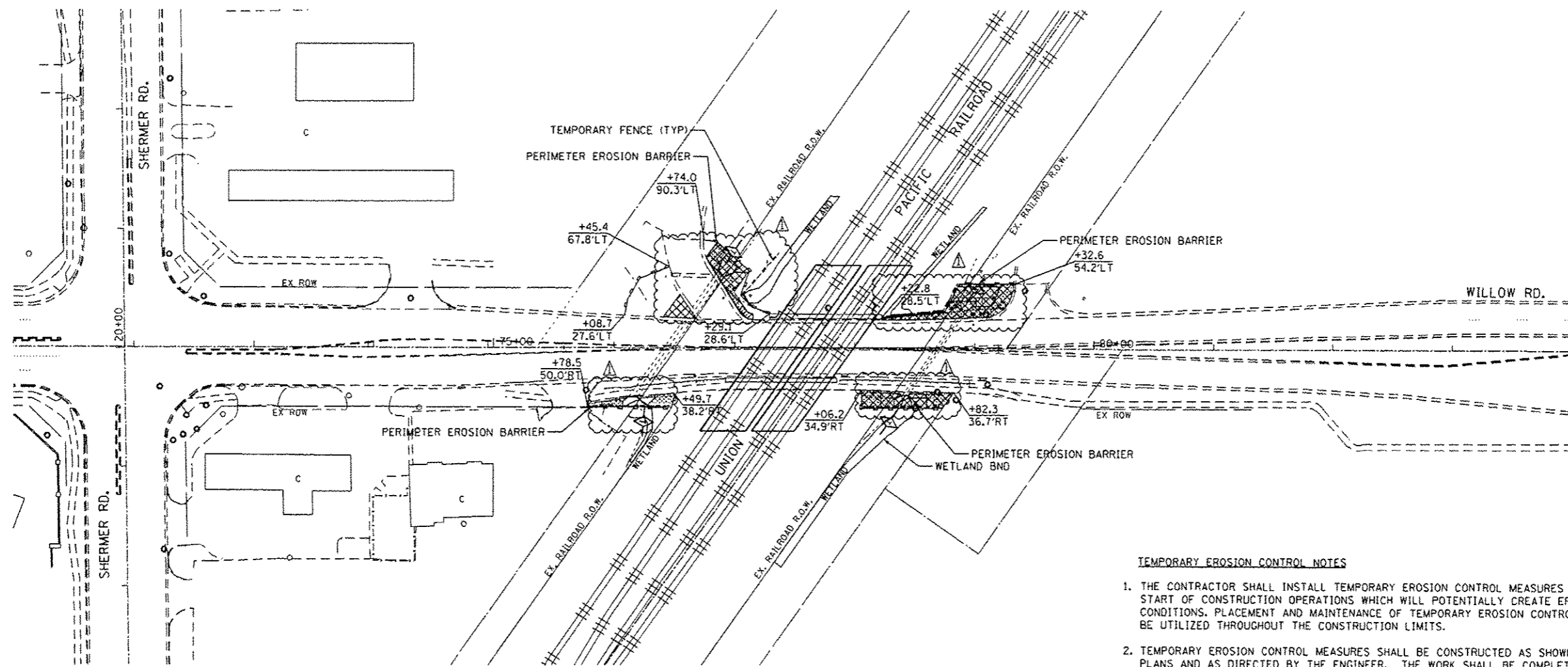
WILLOW ROAD
 ROADWAY PLAN

SECTION 1920.01-B-R
 COUNTY COOK
 CONTRACT NO. 60W04

F.A.P. RTE.	SECTION	COUNTY	TOTAL SHEETS	SHEET NO.
305	1920.01-B-R	COOK	60	9
FED. ROAD DIST. NO. 1 ILLINOIS FED. AID PROJECT				

SCALE: 1"=20' SHEET NO. OF SHEETS STA. TO STA.

P:\2011\ME11007_Ver_Vor_Plan\CADD\MOB_Willow_Rd\Shs\DISB\W84-sh-P1an-BL.DWG



TEMPORARY EROSION CONTROL NOTES

1. THE CONTRACTOR SHALL INSTALL TEMPORARY EROSION CONTROL MEASURES PRIOR THE START OF CONSTRUCTION OPERATIONS WHICH WILL POTENTIALLY CREATE ERODIBLE CONDITIONS. PLACEMENT AND MAINTENANCE OF TEMPORARY EROSION CONTROL SYSTEMS WILL BE UTILIZED THROUGHOUT THE CONSTRUCTION LIMITS.
2. TEMPORARY EROSION CONTROL MEASURES SHALL BE CONSTRUCTED AS SHOWN ON THE PLANS AND AS DIRECTED BY THE ENGINEER. THE WORK SHALL BE COMPLETED IN ACCORDANCE WITH SECTION 280-TEMPORARY EROSION CONTROL OF THE STANDARD SPECIFICATIONS, CONTRACT SPECIAL PROVISIONS AND THE STORM WATER POLLUTION PREVENTION PLAN (SWPPP)
3. THE CONTRACTOR SHALL PERFORM ALL WORK AS DIRECTED BY THE ENGINEER AND AS SHOWN IN HIGHWAY STANDARD 280001.
4. WEEKLY SITE INSPECTIONS AND APPROPRIATE MAINTENANCE OF ALL EROSION CONTROL MEASURES/DEVICES SHALL BE CONDUCTED AND DOCUMENTED AT ALL TIMES DURING CONSTRUCTION AND ESPECIALLY PRIOR TO, DURING, AND AFTER RAINFALL 0.5 INCHES OR GREATER IN A 24 HOUR PERIOD, OR EQUIVALENT SNOWFALL. THE CONTRACTOR SHALL IMMEDIATELY PLACE AND MAINTAIN TEMPORARY EROSION CONTROL SEEDING AT ALL ERODIBLE/BARE AREAS IN ACCORDANCE WITH SECTION 280 OF THE STANDARD SPECIFICATIONS.
5. THE CONTRACTOR SHALL PLACE PERIMETER EROSION BARRIER AROUND ALL EARTH STOCKPILES.
6. EROSION CONTROL MEASURES PLACED DURING STAGE 1 AND STAGE 2 SHALL REMAIN IN PLACE AND MAINTAINED UNTIL NO LONGER REQUIRED.
7. INLET FILTERS SHALL BE PLACED AT ALL INLETS WITHIN PROJECT LIMITS DURING CONSTRUCTION.
8. THE CONTRACTOR SHALL PREPARE DEWATERING PLANS TO BE REVIEWED AND ACCEPTED BY IDOT'S RE PRIOR TO CONTRACTOR CONDUCTING ANY DEWATERING WORK. LACK OF AN ACCEPTED PLAN OR FAILURE TO COMPLY WITH IT WILL RESULT IN AN ESC DEFICIENCY DEDUCTION.
9. THE CONTRACTOR SHALL PREPARE A PLAN FOR MAINTAINING A STABILIZED FLOW LINE DURING STORM SEWER CONSTRUCTION, TO BE REVIEWED AND ACCEPTED BY IDOT'S RE PRIOR TO CONTRACTOR CONDUCTING ANY STORM WORK. LACK OF AN ACCEPTED PLAN OR FAILURE TO COMPLY WITH IT WILL RESULT IN AN ESC DEFICIENCY DEDUCTION.

LEGEND

- TEMPORARY DITCH CHECK, ROLLED EXCELSIOR SPACED 150' (TYP), UNLESS NOTED OTHERWISE ON THE PLANS (SEE STD 280001)
- PERIMETER EROSION BARRIER
- TEMPORARY FENCE
- EROSION CONTROL BLANKET WITH SEEDING CLASS 2A ON SLOPE AND DITCH BOTTOMS, CLASS 4 IN WETLAND/WOUS AREA

▲ ADDENDUM 1 -WETLAND LIMIT

FILE NAME: P:\2011\ME11807_Ver_Vor_Plan\CADD\W08_Willow_Rd\Sh1184-DIG004-sh1-Eros.dgn
 USER: MJS
 DATE: 2/18/2013 10:58 AM
 MILLENIA PROFESSIONAL SERVICES



200 22ND Street, Suite 214, Lombard, IL 60148
 630.705.9110 voice, 630.839.3566 fax
 www.mps-ll.com
MILLENNIA PROFESSIONAL SERVICES

DESIGNED	TVN	REVISED	-	▲ 02/15/13
DRAWN	MJW	REVISED	-	
CHECKED	TVN	REVISED	-	
DATE	2/18/2013	REVISED	-	

**STATE OF ILLINOIS
DEPARTMENT OF TRANSPORTATION**

WILLOW ROAD

EROSION CONTROL PLAN

SCALE: 1"=50' SHEET NO. OF SHEETS STA. TO STA.

F.A.P. RTE.	SECTION	COUNTY	TOTAL SHEETS	SHEET NO.
305	1920.01-B-R	COOK	60	16
CONTRACT NO. 60W04				
FED. ROAD DIST. NO. 1 ILLINOIS FED. AID PROJECT				

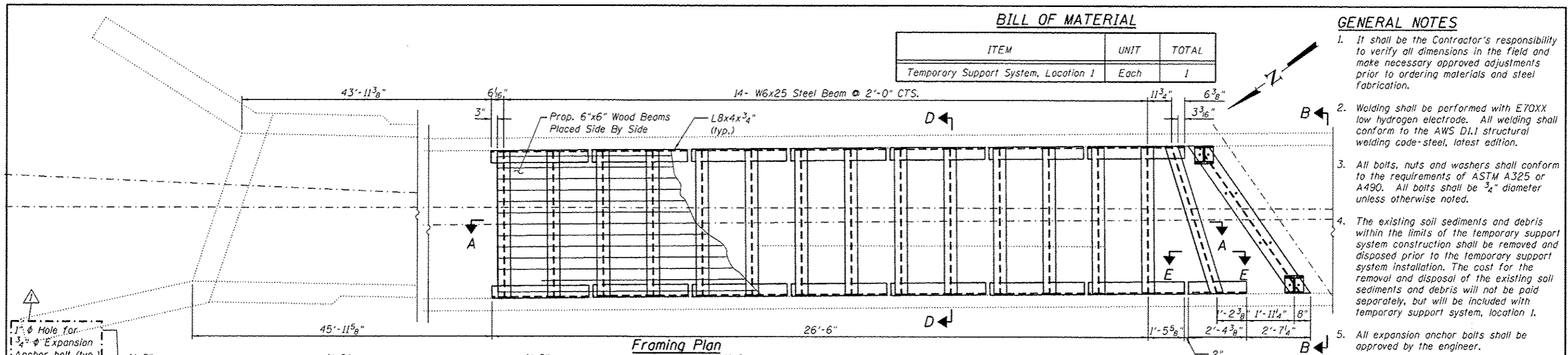
P:\2011\ME11807_Ver_Vor_Plan\CADD\W08_Willow_Rd\Sh1184-DIG004-sh1-Eros.dgn

BILL OF MATERIAL

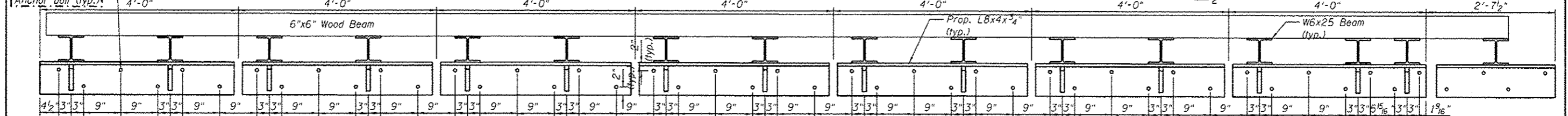
ITEM	UNIT	TOTAL
Temporary Support System, Location 1	Each	1

GENERAL NOTES

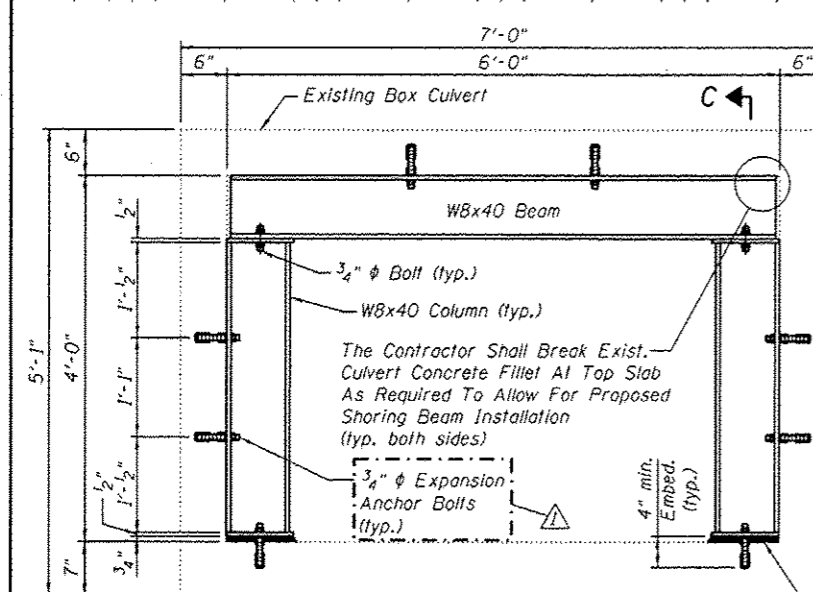
1. It shall be the Contractor's responsibility to verify all dimensions in the field and make necessary approved adjustments prior to ordering materials and steel fabrication.
2. Welding shall be performed with E70XX low hydrogen electrode. All welding shall conform to the AWS D1.1 structural welding code-steel, latest edition.
3. All bolts, nuts and washers shall conform to the requirements of ASTM A325 or A490. All bolts shall be 3/4" diameter unless otherwise noted.
4. The existing soil sediments and debris within the limits of the temporary support system construction shall be removed and disposed prior to the temporary support system installation. The cost for the removal and disposal of the existing soil sediments and debris will not be paid separately, but will be included with temporary support system, location 1.
5. All expansion anchor bolts shall be approved by the engineer.



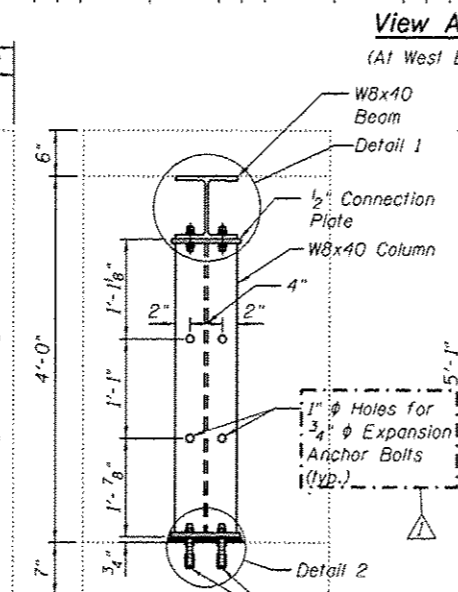
Framing Plan



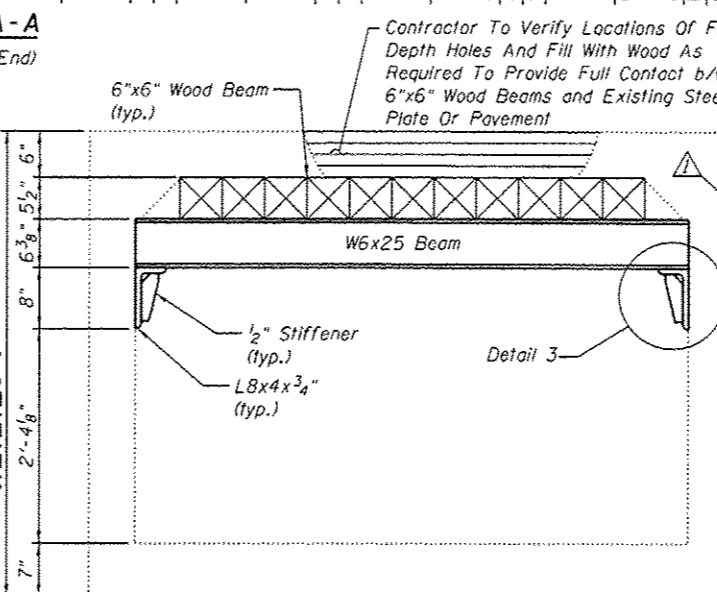
View A-A
(At West End)



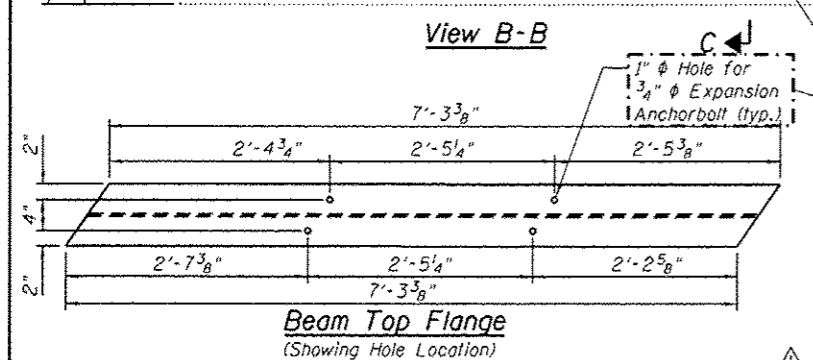
View B-B



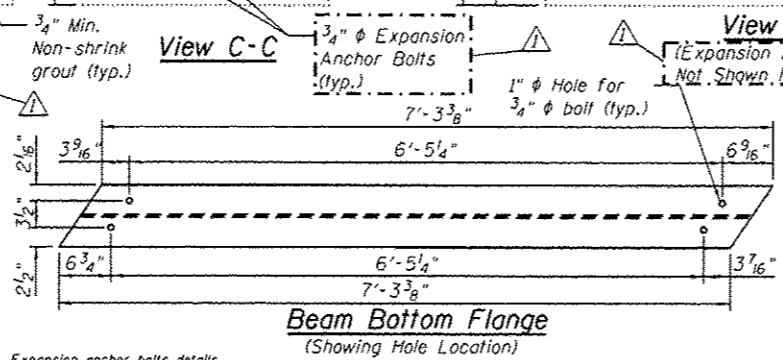
View C-C



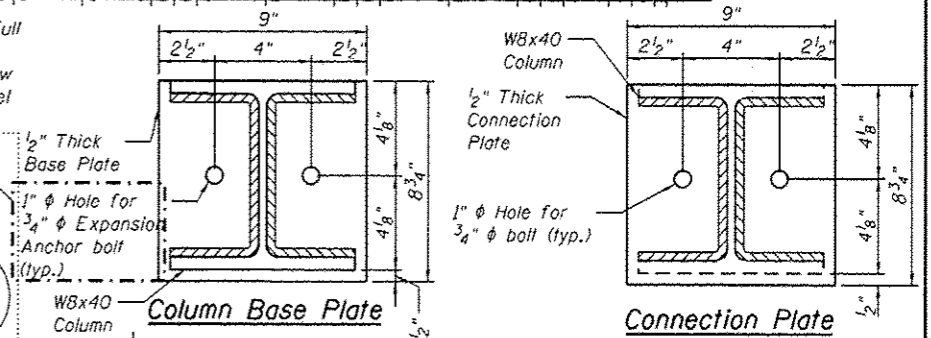
View D-D



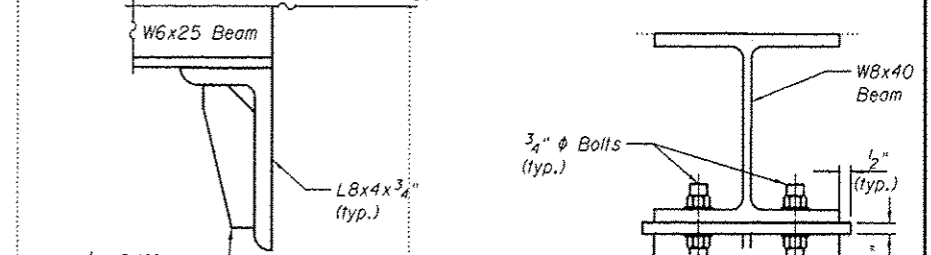
Beam Top Flange
(Showing Hole Location)



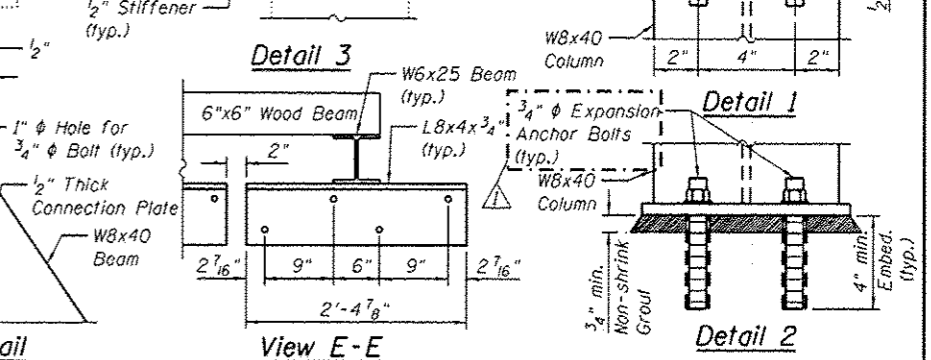
Beam Bottom Flange
(Showing Hole Location)



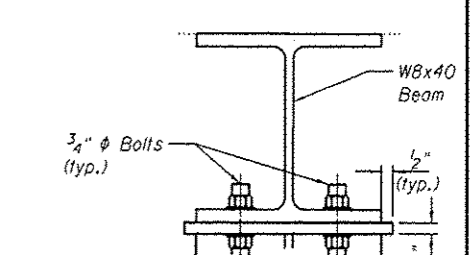
Column Detail



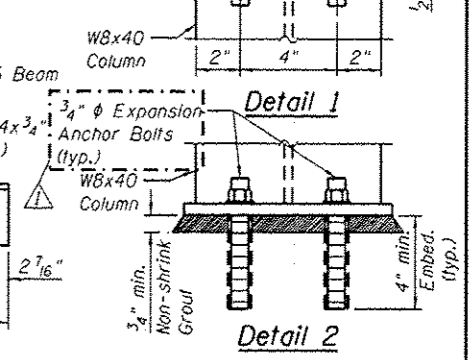
Detail 3



View E-E



Detail 1



Detail 2

HBM
ENGINEERING GROUP, LLC
4415 WEST HARRISON ST.
SUITE 221
MELROSE PARK, IL 60142
PHONE: (708) 234-0900
FAX: (708) 234-0901

DESIGNED - JJS
CHECKED - MI
DRAWN - JJS, AI
DATE - 12/24/2012

REVISIONS
REVISOR
DATE

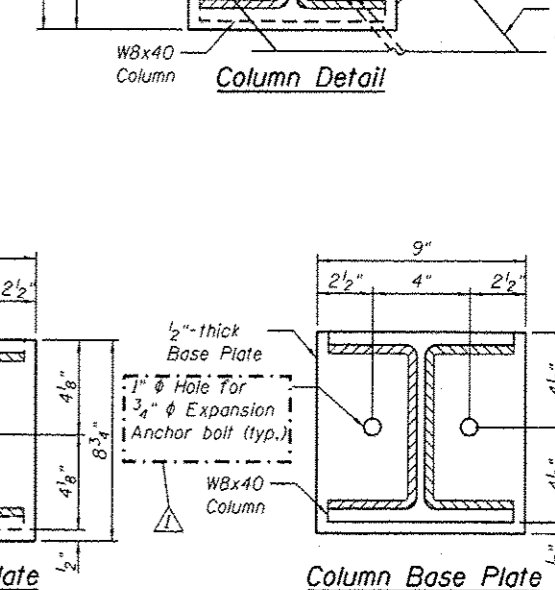
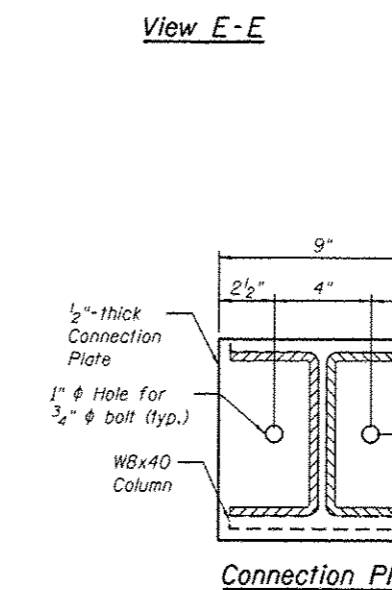
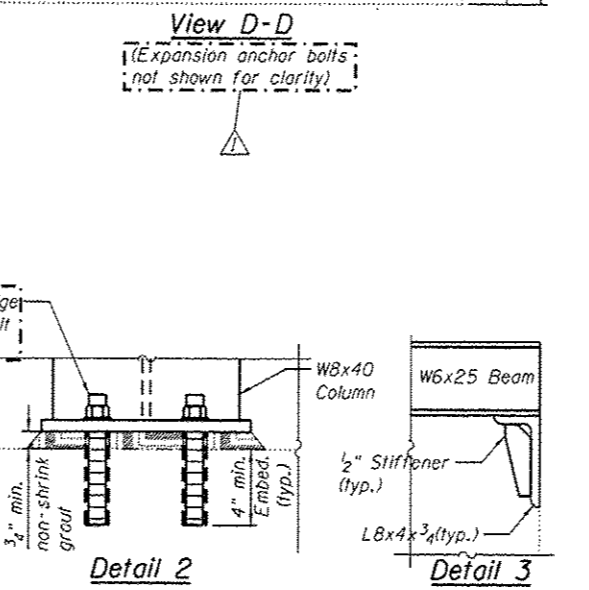
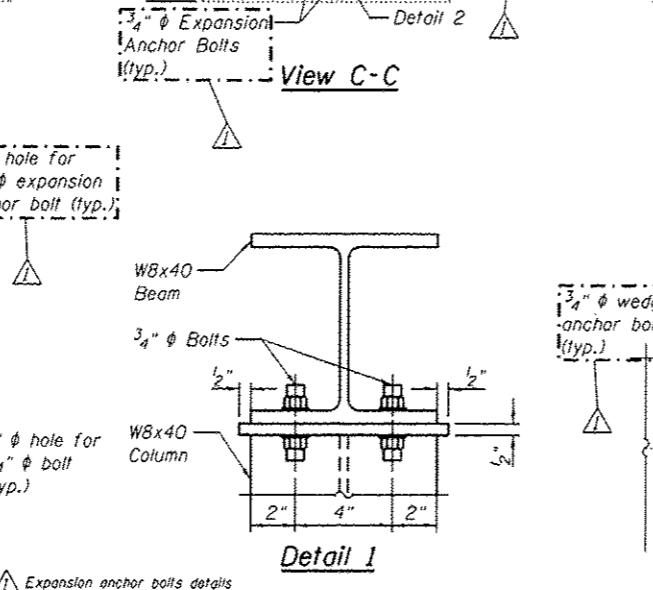
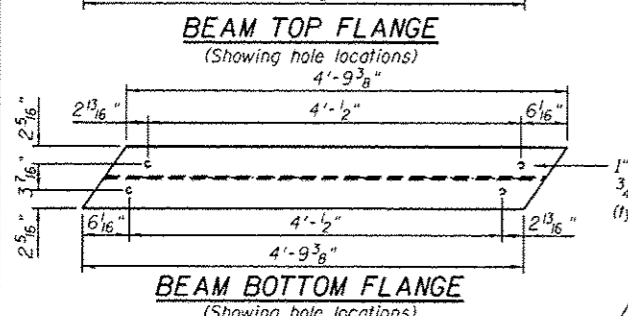
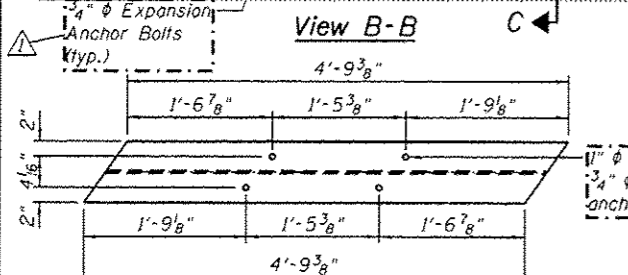
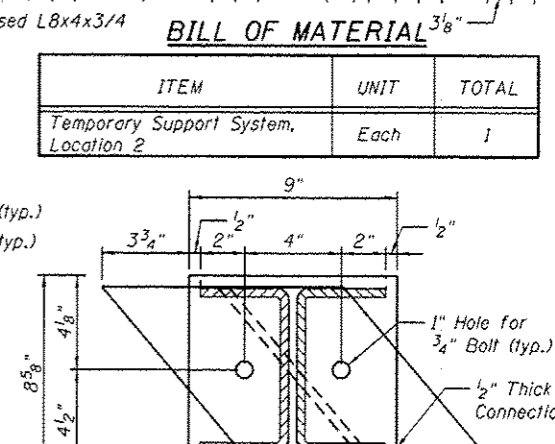
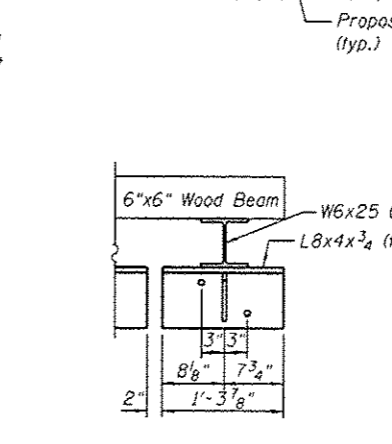
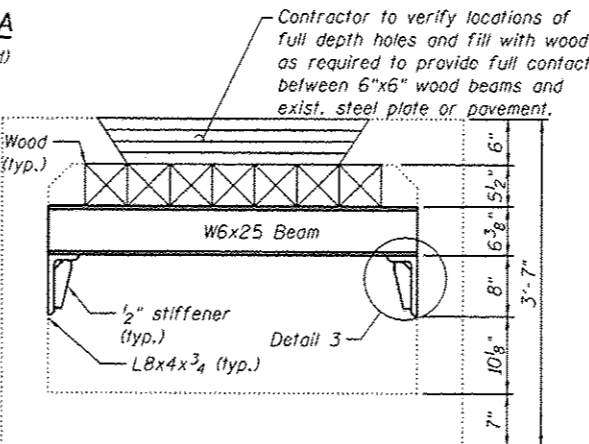
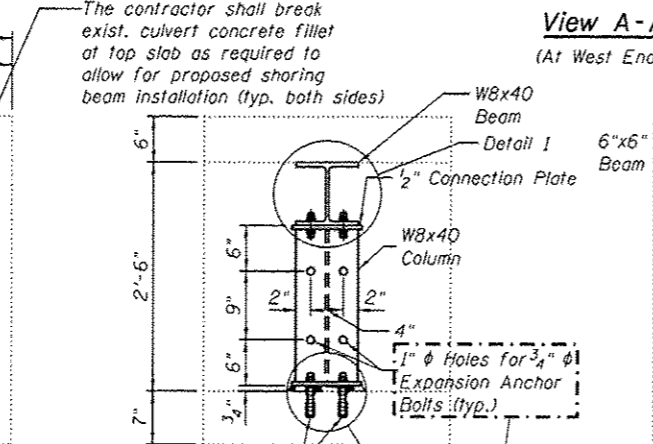
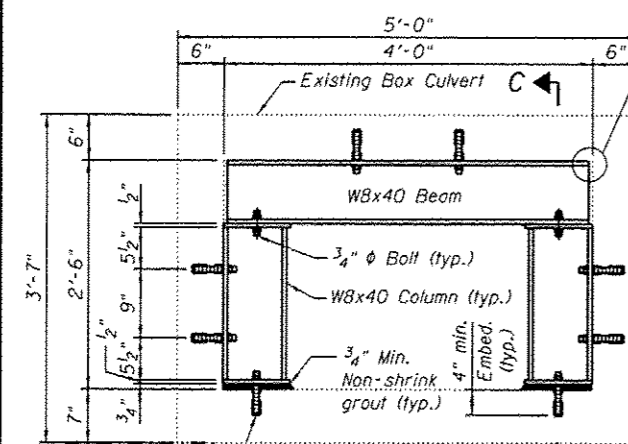
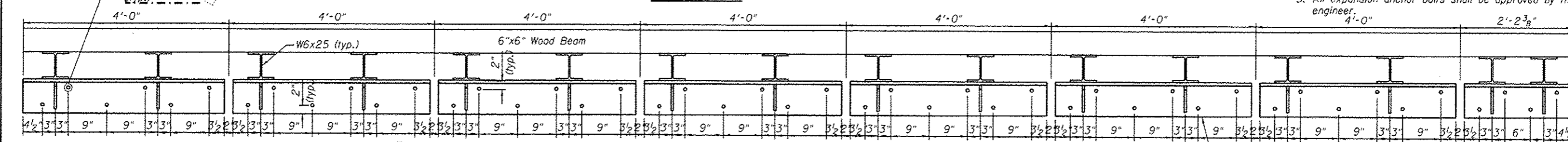
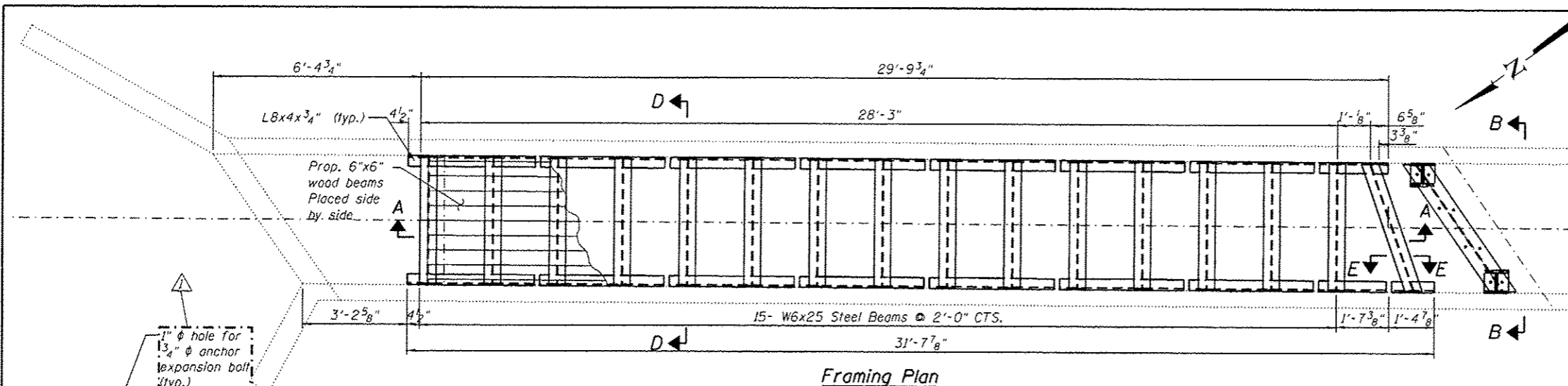
STATE OF ILLINOIS
DEPARTMENT OF TRANSPORTATION

TEMPORARY SUPPORT SYSTEM PLAN, SECTIONS AND DETAILS
6'x4' BOX CULVERT (S.N. 016-1392) - STA. 76 + 44.64

SHEET NO. 51-09 OF 51-10 SHEETS

F.A.P. RTE.	SECTION	COUNTY	TOTAL SHEETS	SHEET NO.
305	1920.01-B-R	COOK	60	35

CONTRACT NO. 60W04
ILLINOIS FED. AID PROJECT



- GENERAL NOTES**
1. It shall be the Contractor's responsibility to verify all dimensions in the field and make necessary approved adjustments prior to ordering materials and steel fabrication.
 2. Welding shall be performed with E70XX low hydrogen electrode. All welding shall conform to the AWS D1.1 structural welding code-steel, latest edition.
 3. All bolts, nuts and washers shall conform to the requirements of ASTM A325 or A490. All bolts shall be 3/4" diameter unless otherwise noted.
 4. The existing soil sediments and debris within the limits of the temporary support system construction shall be removed and disposed prior to the temporary support system installation. The cost for the removal and disposal of the existing soil sediments and debris will not be paid separately, but will be included with temporary support system, location 2.
 5. All expansion anchor bolts shall be approved by the engineer.

BILL OF MATERIAL

ITEM	UNIT	TOTAL
Temporary Support System, Location 2	Each	1

HBM
ENGINEERING GROUP, LLC
CONSULTING & DESIGN
INSPECTION & TESTING
RESEARCH & TESTING

4415 WEST HARRISON ST.
SUITE 231
MILLICAN, IL 60162
PHONE: (708) 238-0900
FAX: (708) 238-0901

DESIGNED - JJS
CHECKED - MI
DRAWN - WMA, AI
DATE - 12/24/2012

REVISED - 02/15/2013 MI
REVISED -
REVISED -
REVISED -

STATE OF ILLINOIS
DEPARTMENT OF TRANSPORTATION

TEMPORARY SUPPORT SYSTEM PLAN, SECTIONS AND DETAILS
BOX CULVERT (4'-0" x 2'-6") - STA. 78 + 69.39

F.A.P. R.T.E. 305
SECTION 1920.01-B-R
COUNTY COOK
TOTAL SHEETS 60
SHEET NO. 45
CONTRACT NO. 60W04
ILLINOIS FED. AID PROJECT

SHEET NO. S2-09 OF S2-10 SHEETS

