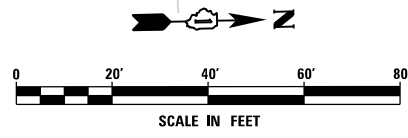
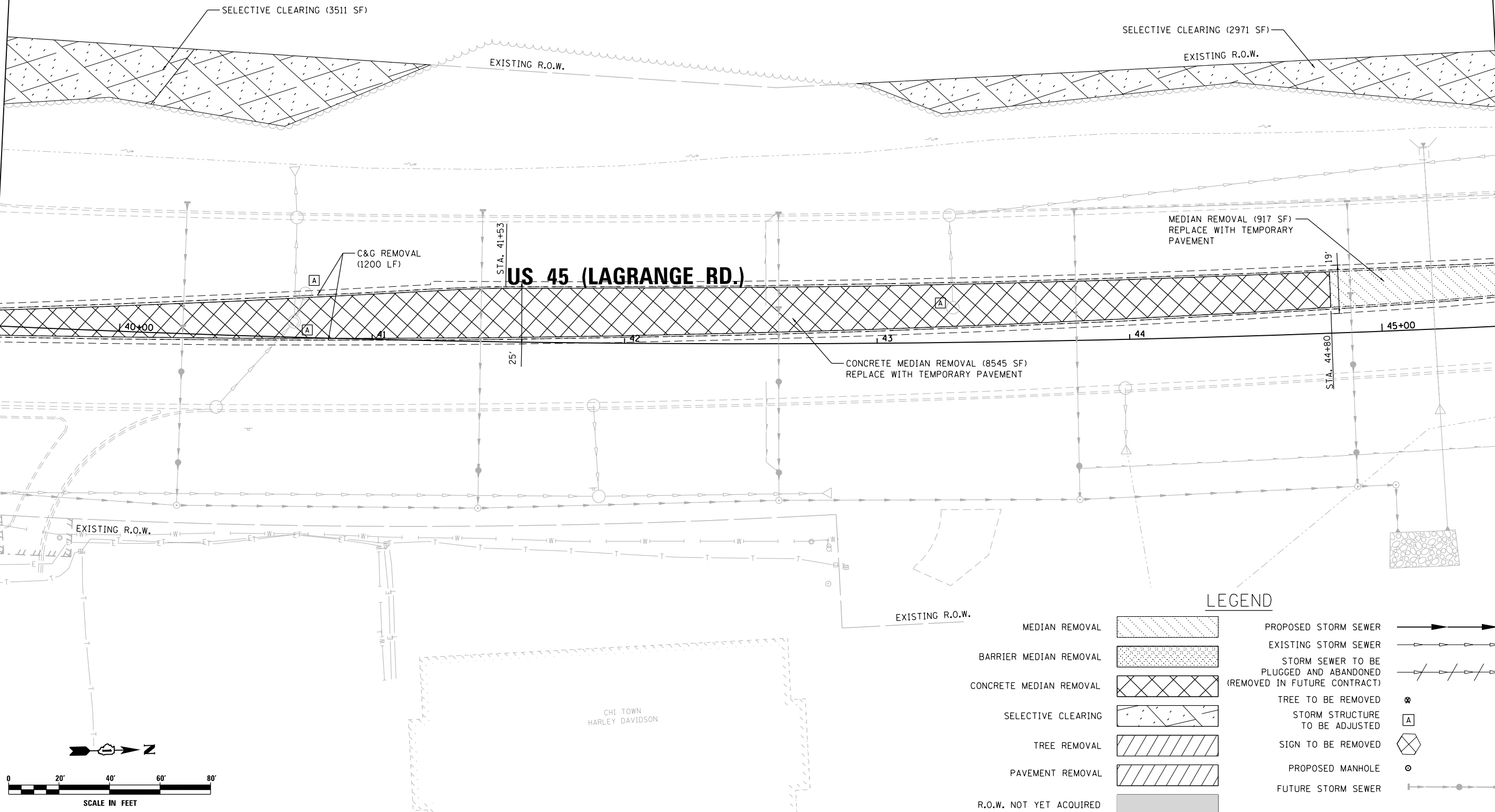


SEE SHEET P-04
 MATCH LINE STA. 39+50.00

MATCH LINE STA. 45+50.00
 SEE SHEET P-06



LEGEND

- MEDIAN REMOVAL
- BARRIER MEDIAN REMOVAL
- CONCRETE MEDIAN REMOVAL
- SELECTIVE CLEARING
- TREE REMOVAL
- PAVEMENT REMOVAL
- R.O.W. NOT YET ACQUIRED
- PROPOSED STORM SEWER
- EXISTING STORM SEWER
- STORM SEWER TO BE PLUGGED AND ABANDONED (REMOVED IN FUTURE CONTRACT)
- TREE TO BE REMOVED
- STORM STRUCTURE TO BE ADJUSTED
- SIGN TO BE REMOVED
- PROPOSED MANHOLE
- FUTURE STORM SEWER

FILE NAME = D160W07-SHT-PLAN05.dgn	USER NAME = Frank.Stallone	DESIGNED - MGS	REVISED -
		DRAWN - REW	REVISED -
		CHECKED - JRS	REVISED -
SHT_PLAN	PLOT DATE = 1/7/2013	DATE - 01/02/13	REVISED -

**STATE OF ILLINOIS
 DEPARTMENT OF TRANSPORTATION**

REMOVAL, TEMPORARY PAVEMENT, AND DRAINAGE PLAN

SCALE: SHEET 5 OF 26 SHEETS STA. 39+50.00 TO STA. 45+50.00

F.A.P. RTE. 330	SECTION 2012-0861	COUNTY COOK	TOTAL SHEETS 98	SHEET NO. 20
P-05		CONTRACT NO. 60W07		
ILLINOIS FED. AID PROJECT				