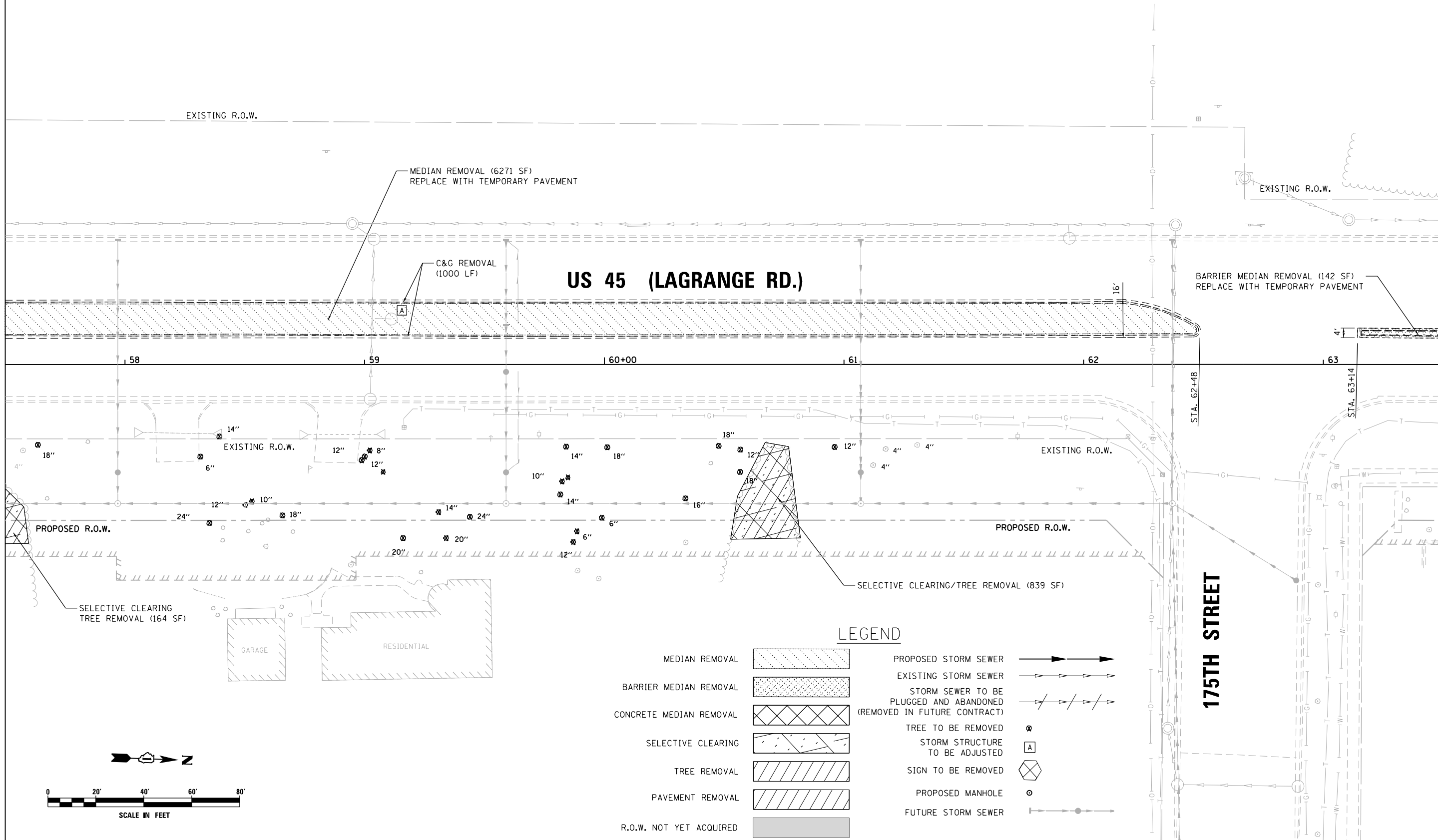
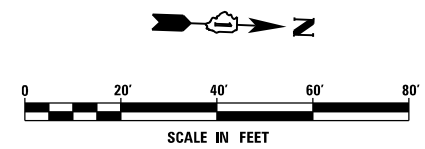


SEE SHEET P-07
 MATCH LINE STA. 57+50.00



MATCH LINE STA. 63+50.00
 SEE SHEET P-06



US 45 (LAGRANGE RD.)

LEGEND

- MEDIAN REMOVAL
- BARRIER MEDIAN REMOVAL
- CONCRETE MEDIAN REMOVAL
- SELECTIVE CLEARING
- TREE REMOVAL
- PAVEMENT REMOVAL
- R.O.W. NOT YET ACQUIRED
- PROPOSED STORM SEWER
- EXISTING STORM SEWER
- STORM SEWER TO BE PLUGGED AND ABANDONED (REMOVED IN FUTURE CONTRACT)
- TREE TO BE REMOVED
- STORM STRUCTURE TO BE ADJUSTED
- SIGN TO BE REMOVED
- PROPOSED MANHOLE
- FUTURE STORM SEWER

FILE NAME = D160W07-SHT-PLAN08.dgn	USER NAME = Frank.Stallone	DESIGNED - MGS	REVISED -
		DRAWN - REW	REVISED -
		CHECKED - JRS	REVISED -
SHT_PLAN	PLOT DATE = 1/7/2013	DATE - 01/02/13	REVISED -

**STATE OF ILLINOIS
 DEPARTMENT OF TRANSPORTATION**

REMOVAL, TEMPORARY PAVEMENT, AND DRAINAGE PLAN

SCALE: 1"=20' SHEET 8 OF 26 SHEETS STA. 57+50.00 TO STA. 63+50.00

F.A.P. RTE.	SECTION	COUNTY	TOTAL SHEETS	SHEET NO.
330	2012-0861	COOK	98	23
P-08			CONTRACT NO. 60W07	
ILLINOIS FED. AID PROJECT				