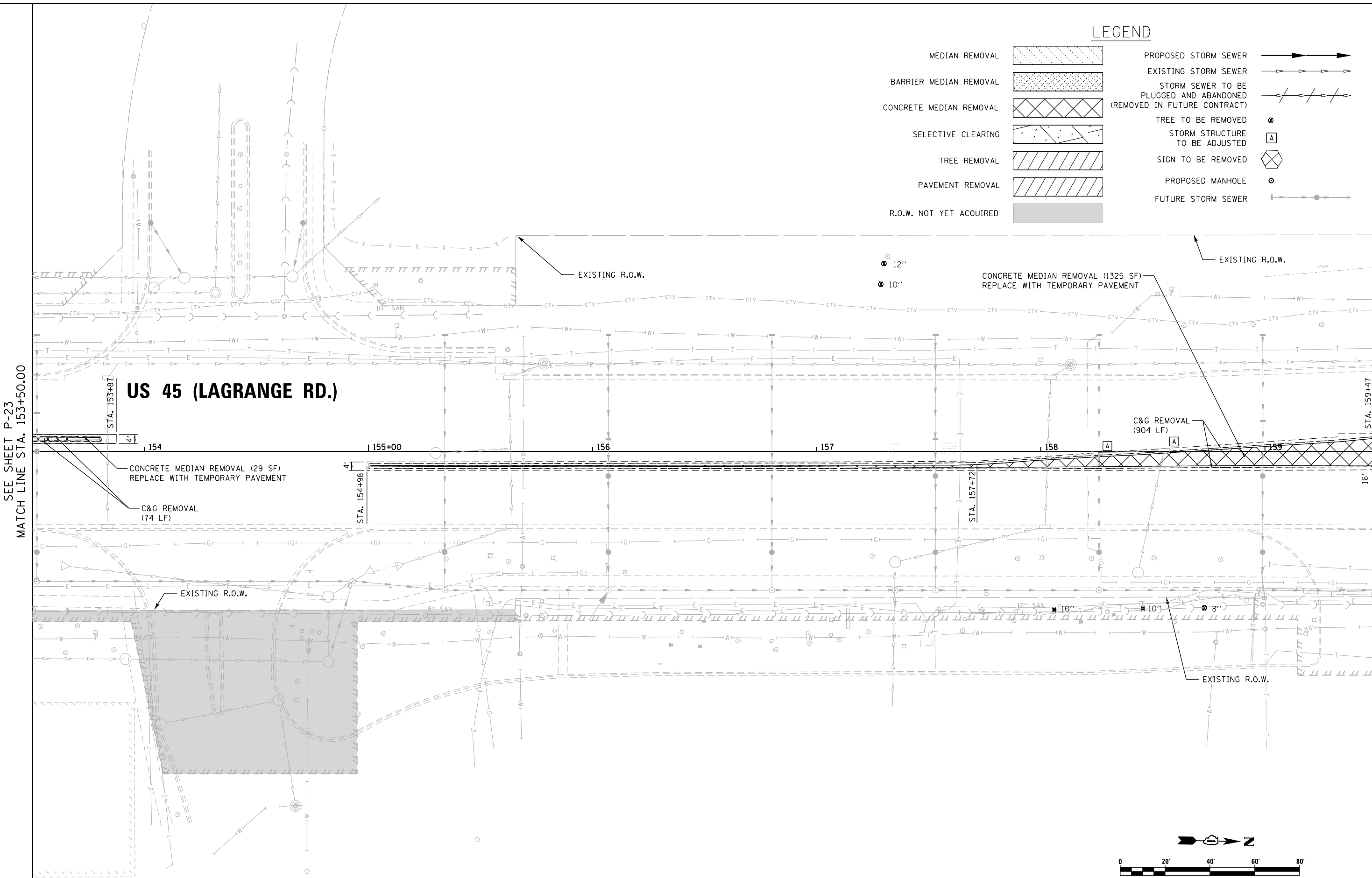


**LEGEND**

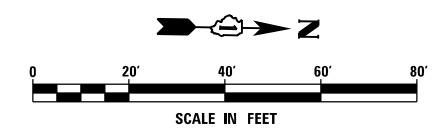
- MEDIAN REMOVAL
- BARRIER MEDIAN REMOVAL
- CONCRETE MEDIAN REMOVAL
- SELECTIVE CLEARING
- TREE REMOVAL
- PAVEMENT REMOVAL
- R.O.W. NOT YET ACQUIRED
- PROPOSED STORM SEWER
- EXISTING STORM SEWER
- STORM SEWER TO BE PLUGGED AND ABANDONED (REMOVED IN FUTURE CONTRACT)
- TREE TO BE REMOVED
- STORM STRUCTURE TO BE ADJUSTED
- SIGN TO BE REMOVED
- PROPOSED MANHOLE
- FUTURE STORM SEWER



SEE SHEET P-23  
MATCH LINE STA. 153+50.00

MATCH LINE STA. 159+50.00  
SEE SHEET P-25

**US 45 (LAGRANGE RD.)**



**URS**  
100 S. WACKER DR.  
SUITE 600  
CHICAGO, IL 60606  
TEL (312) 939-1000  
FAX (312) 939-4998

FILE NAME = D160W07-SHT-PLAN24.dgn	USER NAME = Frank.Stallone	DESIGNED - MGS	REVISED -	<b>STATE OF ILLINOIS DEPARTMENT OF TRANSPORTATION</b>	<b>REMOVAL, TEMPORARY PAVEMENT, AND DRAINAGE PLAN</b>	F.A.P. RTE. 330	SECTION 2012-0861	COUNTY COOK	TOTAL SHEETS 98	SHEET NO. 39	
SHT.PLAN	PLOT SCALE = 40.0000' / in.	CHECKED - JRS	REVISED -			SCALE: 1"=20'	SHEET 24 OF 26 SHEETS	P-24		CONTRACT NO. 60W07	
	PLOT DATE = 1/7/2013	DATE - 01/02/13	REVISED -			STA. 153+50.00 TO STA. 159+50.00		ILLINOIS FED. AID PROJECT			