

STATE OF ILLINOIS  
DEPARTMENT OF TRANSPORTATION  
DIVISION OF HIGHWAYS

**PROPOSED  
HIGHWAY PLANS**

FAP ROUTE 330: US 45 (LAGRANGE ROAD)  
131ST STREET TO 159TH STREET  
SECTION: 2012-088-1  
PROJECT: NHF-0330(072)  
(ADVANCE CONTRACT) MEDIAN REMOVAL,  
TEMPORARY PAVMENT, BOX CULVERT & TREE REMOVAL  
E COOK COUNTY  
C-91-169-13

F.A.P. RITE	SECTION	COUNTY	TOTAL SHEETS	SHEET NO.
330	2012-088-1	COOK	*152	1

ILLINOIS CONTRACT NO. 60W09  
\*152-7=145

D-91-436-12

\*145+1=146

FOR INDEX OF SHEETS, SEE SHEET NO. 2

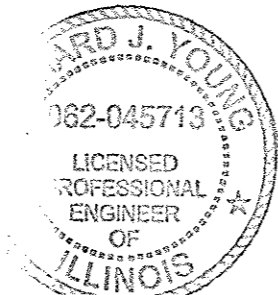
**DESIGN DESIGNATION:**

US 45 (LAGRANGE ROAD): 2550 (20) OTHER PRINCIPAL ARTERIAL AND STRATEGIC REGIONAL ARTERIAL (SRA) - CLASS II TRUCK ROUTE 11.85 (JPCP-20)

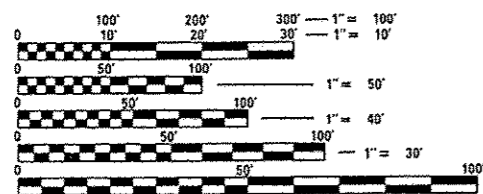
131ST STREET: 620 (20) MINOR ARTERIAL 8.68 (FD-20)  
135TH STREET: 450 (20) MINOR ARTERIAL 8.68 (FD-20)  
CREEK ROAD: 2200 (12) LOCAL (RESIDENTIAL) 8.68 (FD-20)

**DESIGN TRAFFIC DATA:**

US 45 (LAGRANGE ROAD) = 45 MPH  
ADT = 47,000 (2000, 143RD ST TO 135TH ST)  
ADT = 52,000 (2000, 135TH ST TO 131ST ST)  
ADT = 52,000 (2030, 143RD ST TO 135TH ST)  
ADT = 57,000 (2030, 135TH ST TO 131ST ST)  
131ST STREET = 45 MPH  
MHV = 3,893 (2000)  
135TH STREET = 45 MPH  
MHV = 3,695 (2000)  
CREEK RD = 35 MPH



*Rajendra Shah*  
Sheets 136, 139-145  
Dec 20, 2012

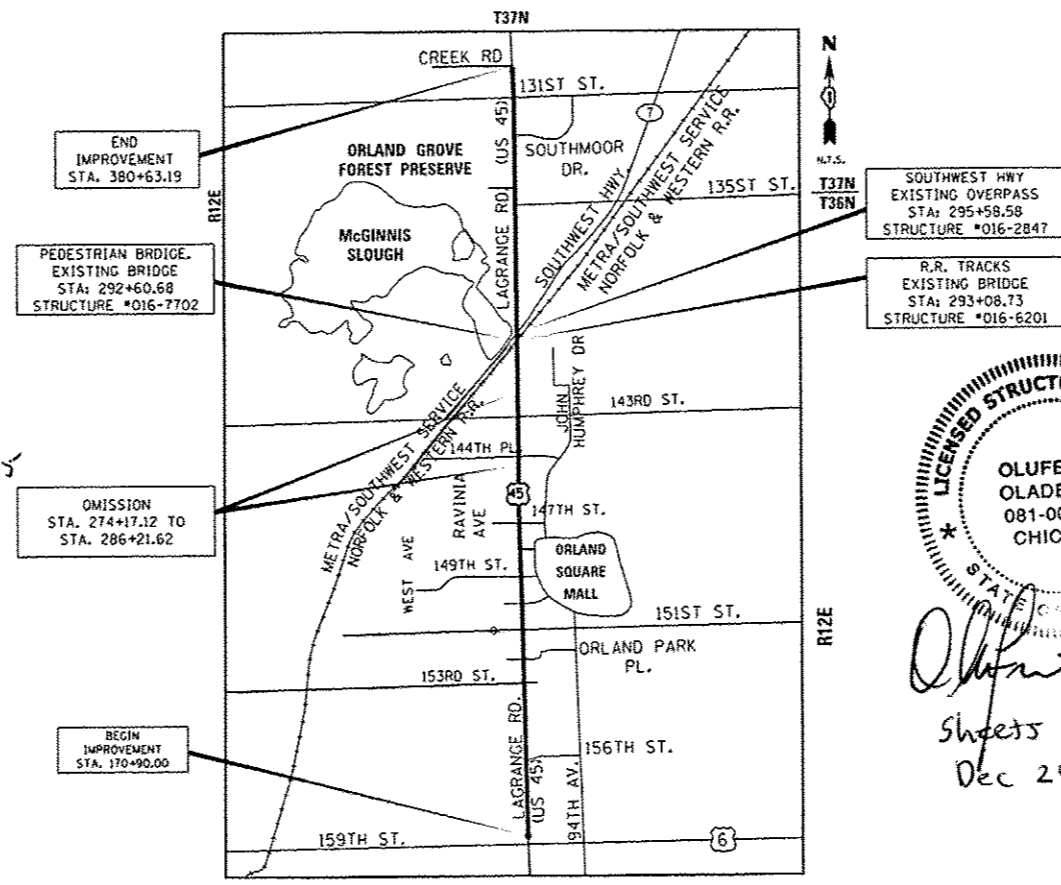


FULL SIZE PLANS HAVE BEEN PREPARED USING STANDARD ENGINEERING SCALES. REDUCED SIZED PLANS WILL NOT CONFORM TO STANDARD SCALES. IN MAKING MEASUREMENTS ON REDUCED PLANS, THE ABOVE SCALES MAY BE USED.

J.U.L.I.E.  
JOINT UTILITY LOCATION INFORMATION FOR EXCAVATION  
1-800-892-0123  
OR 811

PROJECT MANAGER: RAJENDRA SHAH  
1-847-705-4555

CONTRACT NO. 60W09



ORLAND TOWNSHIP  
GROSS LENGTH = 19,768.84 FT. = 3.744 MILE  
NET LENGTH = 19,768.84 FT. = 3.744 MILE



*Olufemi A. Oladeinde*  
Sheets 137-138  
Dec 20, 2012



LOCATION OF SECTION INDICATED THUS: —

STATE OF ILLINOIS  
DEPARTMENT OF TRANSPORTATION  
DIVISION OF HIGHWAYS  
SUBMITTED December 21, 2012  
*John Fortmann*  
DEPUTY DIRECTOR OF HIGHWAYS, REGION ENGINEER  
Feb 1, 2013  
*John D. Baranowski* P.E.  
ENGINEER OF DESIGN AND ENVIRONMENT  
Feb 1, 2013  
*Omer Osman* P.E.  
DIRECTOR OF HIGHWAYS, CHIEF ENGINEER

PRINTED BY THE AUTHORITY  
OF THE STATE OF ILLINOIS

PLANS PREPARED BY:  
**URS**  
100 S. WACKER DR., SUITE 500 TEL (312)-939-1000  
CHICAGO IL, 60606 FAX (312)-939-4198