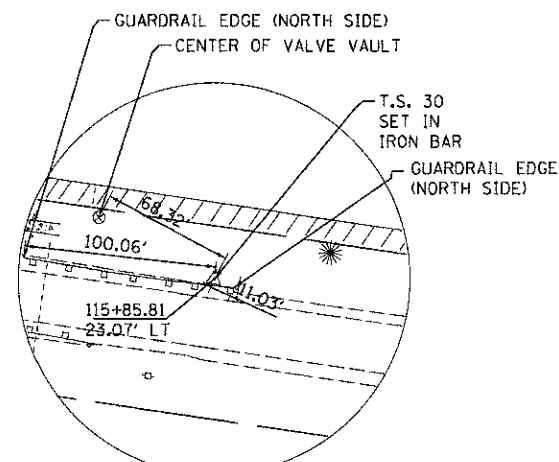
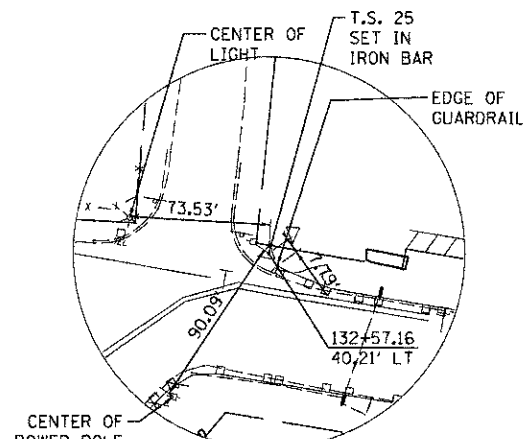


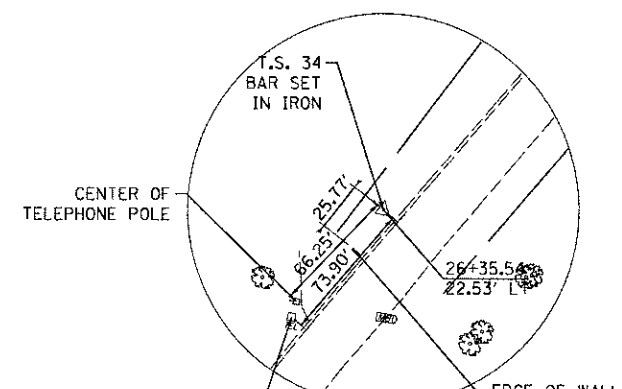
TRAVERSE STATION #33  
N 2080627.888  
E 1001698.977



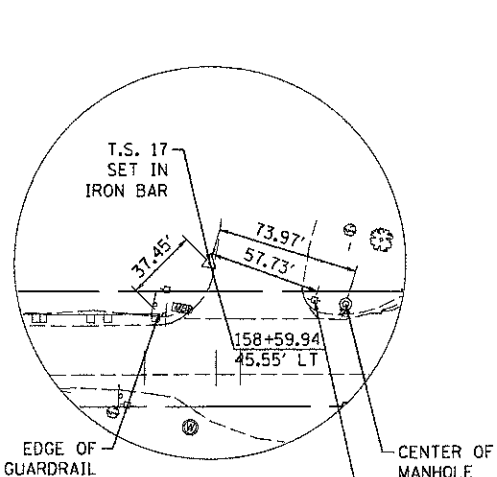
TRAVERSE STATION #30  
N 2080723.300  
E 1003035.997



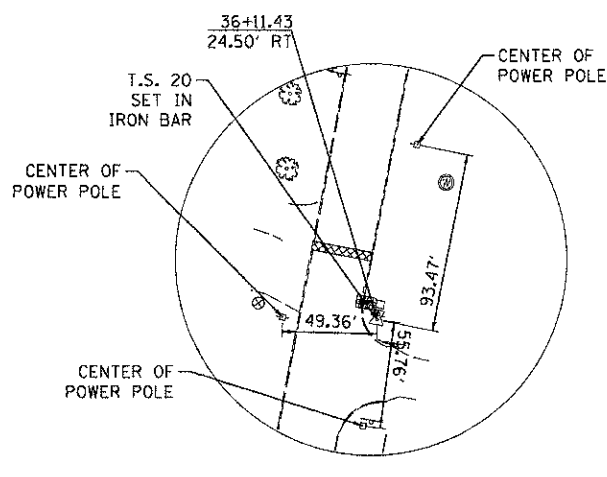
TRAVERSE STATION #25  
N 2080786.283  
E 1004706.871



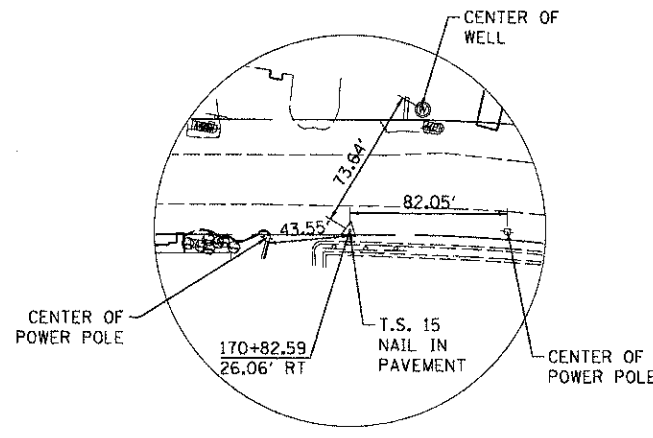
TRAVERSE STATION #34  
N 2080387.926  
E 1004431.363



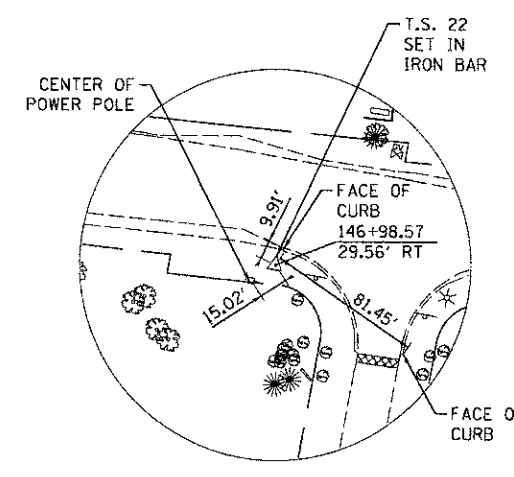
TRAVERSE STATION #17  
N 2080997.929  
E 1007286.287



TRAVERSE STATION #20  
N 2081944.981  
E 1007446.293



TRAVERSE STATION #15  
N 2081143.377  
E 1008502.579



TRAVERSE STATION #22  
N 2080745.726  
E 1006150.690

COMPANY NAME: HRGreen.com  
PROJECT CONTACT: HRGreen.com  
DATE PLOTTED: 12/19/2012 2:52:37 PM  
FILE NAME: 880622-110-02.dgn  
PLOT DRIVER: perf.br.no.levelcolorfg  
PEN TABLE: standard-frames.tbl



USER NAME = jettano  
FILE NAME = 880622-110-02.dgn  
PLOT SCALE = 1" = 100'  
PLOT DATE = 12/19/2012

DESIGNED - JRM  
DRAWN - JPA  
CHECKED - TH  
DATE - 12/19/12

REVISED -  
REVISED -  
REVISED -  
REVISED -

**MCHENRY COUNTY  
DIVISION OF TRANSPORTATION**

**ALIGNMENT, TIES AND BENCHMARKS**

SCALE: 1" = 100' SHEET NO. 2 OF 2 SHEETS STA. TO STA.

F.A.U. RTE.	SECTION	COUNTY	TOTAL SHEETS	SHEET NO.
168	05-00314-00-WR	MCHENRY	187	22
CONTRACT NO. 63515				
FED. ROAD DIST. NO. ILLINOIS FED. AID PROJECT				