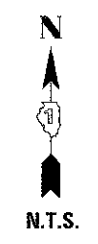
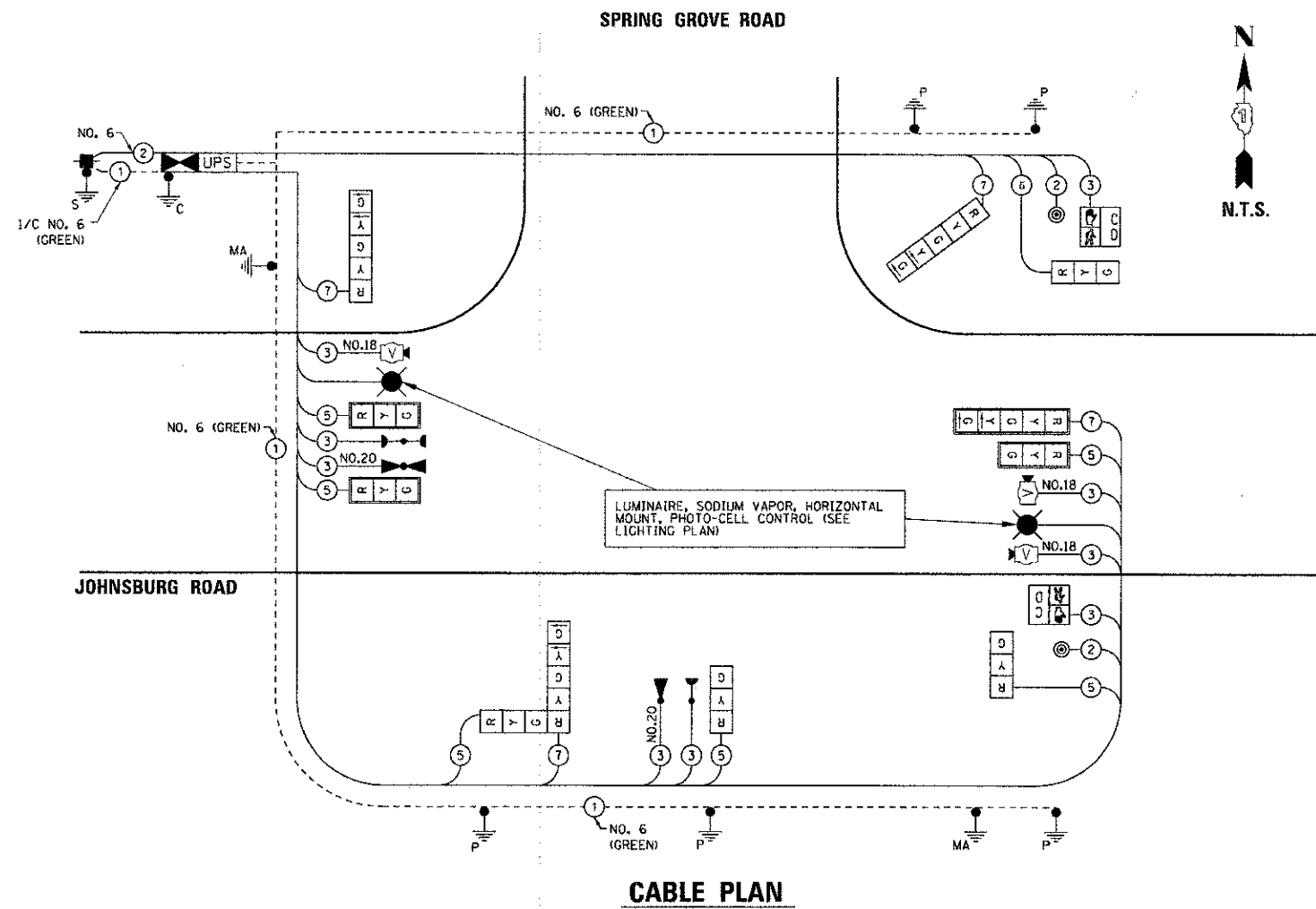


**SCHEDULE OF QUANTITIES**

ITEM	UNIT	TOTAL
SIGN PANEL - TYPE 2	SQ FT	32.25
SERVICE INSTALLATION - POLE MOUNTED	EACH	1
UNDERGROUND CONDUIT, GALVANIZED STEEL, 2" DIA.	FOOT	15.0
UNDERGROUND CONDUIT, GALVANIZED STEEL, 2 1/2" DIA.	FOOT	113.0
UNDERGROUND CONDUIT, GALVANIZED STEEL, 3" DIA.	FOOT	92.0
UNDERGROUND CONDUIT, GALVANIZED STEEL, 4" DIA.	FOOT	315.0
HANDHOLE	EACH	2
DOUBLE HANDHOLE	EACH	2
ELECTRIC CABLE IN CONDUIT, SIGNAL NO. 14 2C	FOOT	419.5
ELECTRIC CABLE IN CONDUIT, SIGNAL NO. 14 3C	FOOT	704.0
ELECTRIC CABLE IN CONDUIT, SIGNAL NO. 14 5C	FOOT	937.5
ELECTRIC CABLE IN CONDUIT, SIGNAL NO. 14 7C	FOOT	853.0
ELECTRIC CABLE IN CONDUIT, SIGNAL NO. 18 3C	FOOT	582.5
ELECTRIC CABLE IN CONDUIT, SERVICE, NO. 6 2C	FOOT	48.0
ELECTRIC CABLE IN CONDUIT, EQUIPMENT GROUNDING CONDUCTOR, NO. 6 1C	FOOT	1,085.5
TRAFFIC SIGNAL POST, GALVANIZED STEEL 10 FT.	EACH	1
TRAFFIC SIGNAL POST, GALVANIZED STEEL 16 FT.	EACH	3
TRAFFIC SIGNAL POST, GALVANIZED STEEL 18 FT.	EACH	1
STEEL COMBINATION MAST ARM ASSEMBLY AND POLE 28 FT.	EACH	1
STEEL COMBINATION MAST ARM ASSEMBLY AND POLE 30 FT.	EACH	1
CONCRETE FOUNDATION, TYPE A	FOOT	20.0
CONCRETE FOUNDATION, TYPE C	FOOT	4.0
CONCRETE FOUNDATION, TYPE E 30-INCH DIAMETER	FOOT	10.0
CONCRETE FOUNDATION, TYPE E 36-INCH DIAMETER	FOOT	11.0
SIGNAL HEAD, LED, 1-FACE, 3-SECTION, MAST-ARM MOUNTED	EACH	3
SIGNAL HEAD, LED, 1-FACE, 3-SECTION, BRACKET MOUNTED	EACH	3
SIGNAL HEAD, LED, 1-FACE, 5-SECTION, BRACKET MOUNTED	EACH	2
SIGNAL HEAD, LED, 1-FACE, 5-SECTION, MAST-ARM MOUNTED	EACH	1
SIGNAL HEAD, LED, 2-FACE, 1-3 SECTION, 1-5 SECTION, BRACKET MOUNTED	EACH	1
PEDESTRIAN SIGNAL HEAD, LED, 1-FACE, BRACKET MOUNTED WITH COUNTDOWN TIMER	EACH	2
TRAFFIC SIGNAL BACKPLATE, LOUVERED	EACH	4
LIGHT DETECTOR	EACH	2
LIGHT DETECTOR AMPLIFIER	EACH	1
PEDESTRIAN PUSH-BUTTON	EACH	2
EMERGENCY VEHICLE PRIORITY SYSTEM LINE SENSOR CABLE, NO. 20 3/C	FOOT	270.5
FULL-ACTUATED CONTROLLER AND TYPE IV CABINET, SPECIAL	EACH	1
UNINTERRUPTIBLE POWER SUPPLY, SPECIAL	EACH	1
VIDEO DETECTION SYSTEM COMPLETE INTERSECTION	L SUM	0.50

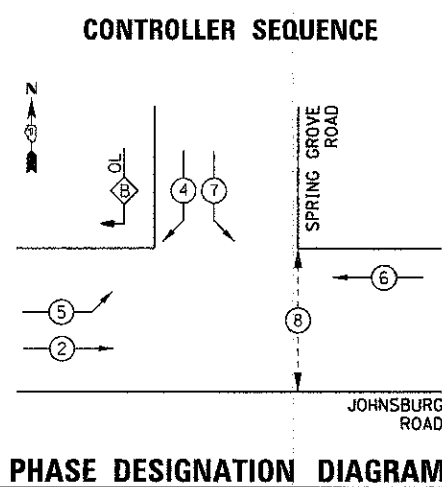


THE TRAFFIC SIGNAL CONTROL EQUIPMENT FOR THIS PROJECT SHALL BE "ECONOLITE" AS REQUIRED BY THE MCHENRY COUNTY DIVISION OF TRANSPORTATION.

M.C.D.O.T. TRAFFIC SIGNAL INSTALLATION ELECTRICAL SERVICE REQUIREMENTS					TOTAL WATTAGE
TYPE	NO. LAMPS	WATTAGE		% OPERATION	
		INCAND.	LED		
SIGNAL (RED)	11	17		0.50	93.50
(YELLOW)	11	25		0.25	68.75
(GREEN)	11	15		0.25	41.25
ARROW	8	12		0.10	9.60
PED. SIGNAL	2		25	1.00	50.00
CONTROLLER	1		100	1.00	100.00
UPS	1		25	1.00	25.00
VIDEO SYSTEM	1		15	1.00	15.00
TOTAL =					403.10

ENERGY COSTS TO: VILLAGE OF JOHNSBURG  
1515 CHANNEL BEACH AVENUE  
JOHNSBURG, IL 60051

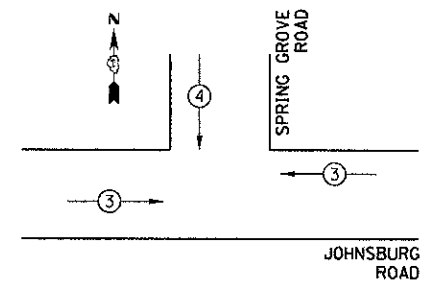
ENERGY SUPPLY CONTACT: MICHAEL LENOX  
PHONE: 815-490-2869  
COMPANY: COMMONWEALTH EDISON



OVERLAP PHASE	PERMISSIVE PHASE	PROTECTED PHASE
B	= 4	+ 5

**CONTROLLER SEQUENCE LEGEND**

- ← ⊕ → DUAL ENTRY PHASE
- ← ⊞ → SINGLE ENTRY PHASE
- ⊕ OL OVERLAP
- \* NUMBER REFERRING TO ASSOCIATED PHASE
- ← ⊙ → PEDESTRIAN PHASE



**EMERGENCY VEHICLE PREEMPTION SEQUENCE**

PROPOSED EMERGENCY VEHICLE PREEMPTORS		
PROPOSED EMERGENCY VEHICLE PREEMPTORS	3	4
MOVEMENT	⇌	↓

JOHNSBURG ROAD @ SPRING GROVE ROAD

COMPANY NAME: HRGreen  
PROJECT CONTACT: HRGreen.com  
CLIENT: Village Professionals Design Firm  
DATE PLOTTED: 12/19/2012 2:56:07 PM  
FILE NAME: 080622-11-g02c-5pr.dgn  
PLOT NUMBER: 168  
PLOT SCALE: N.T.S.  
PLOT DATE: 12/19/2012



USER NAME: jeltone	DESIGNED: -	REVISED: -
FILE NAME: 080622-11-g02c-5pr.dgn	DRAWN: -	REVISED: -
PLOT SCALE: N.T.S.	CHECKED: -	REVISED: -
PLOT DATE: 12/19/2012	DATE: 12/19/12	REVISED: -

MCHENRY COUNTY  
DIVISION OF TRANSPORTATION

CABLE AND PHASE DESIGNATION DIAGRAM  
DIAGRAM AND EMERGENCY VEHICLE PREEMPTION SEQUENCE

SCALE: N.T.S. SHEET NO. 3 OF 4 SHEETS STA. TO STA.

F.A.U. RTE.	SECTION	COUNTY	TOTAL SHEETS	SHEET NO.
168	05-00314-00-WR	MCHENRY	187	101
CONTRACT NO. 63515				
FED. ROAD DIST. NO. ILLINOIS FED. AID PROJECT				