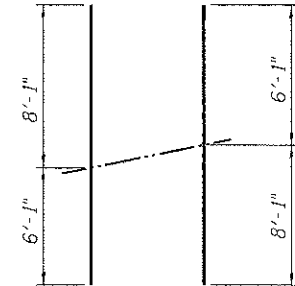


BILL OF MATERIALS

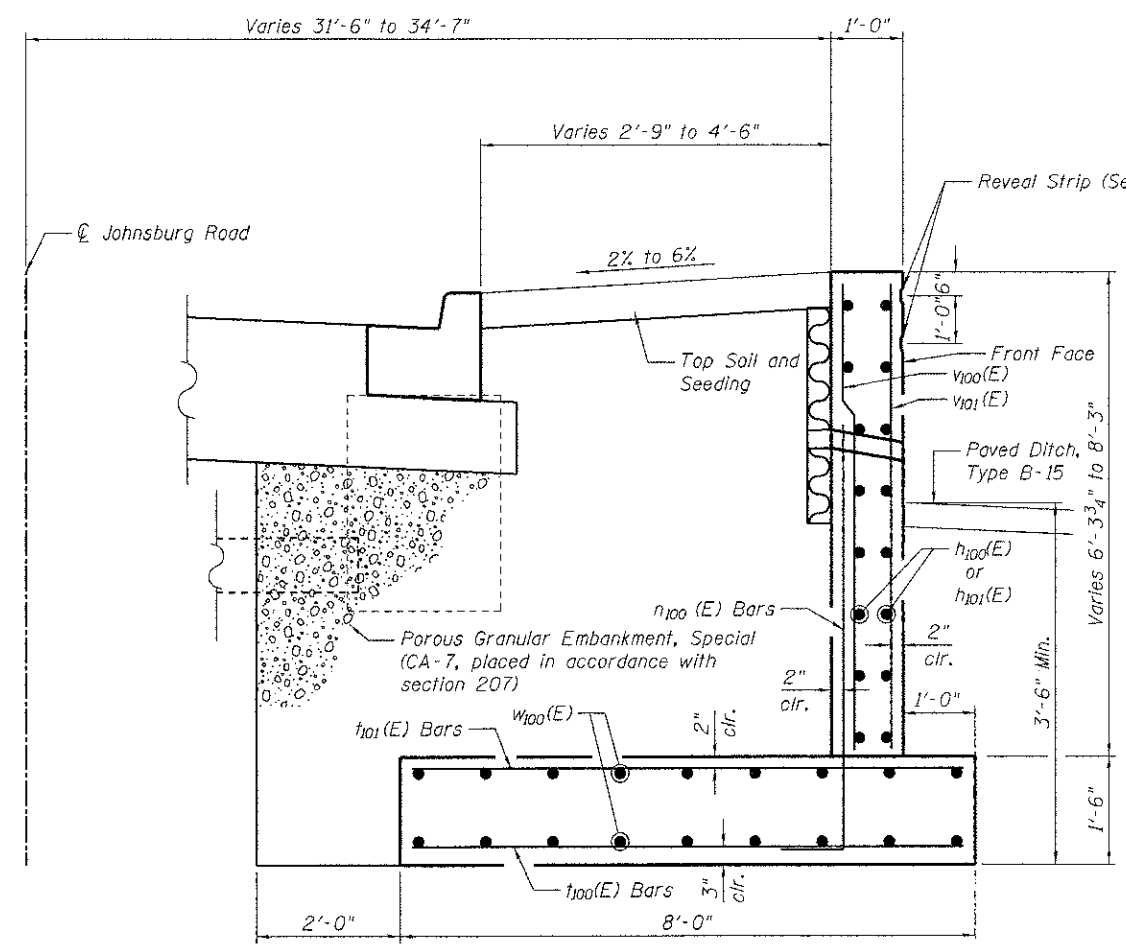
Bar	No.	Size	Length	Shape
$h_{100}(E)$	32	# 5	29'-8"	—
$h_{101}(E)$	32	# 5	32'-0"	—
$n_{100}(E)$	240	# 8	7'-1"	J
$t_{100}(E)$	120	# 5	7'-8"	—
$t_{101}(E)$	240	# 6	7'-8"	—
$v_{100}(E)$	240	#6	14'-2"	—
$v_{101}(E)$	120	# 5	14'-2"	—
$w_{100}(E)$	72	# 5	29'-10"	—
$w_{101}(E)$	27	# 5	9'-3"	—
$w_{102}(E)$	27	# 5	8'-6"	—
Reinforcement Bars Epoxy Coated			Pound	19,940
Concrete Structures			CU. Yd.	87
Structure Excavation			CU. Yd.	225
Porous Granular Embankment, Special			CU. Yd.	195

MINIMUM BAR LAP

#5 bar = 3'-3"
 #6 bar = 3'-10"
 (Unless noted otherwise)

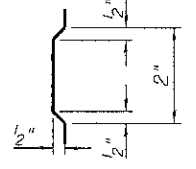


TYPICAL WALL SECTION



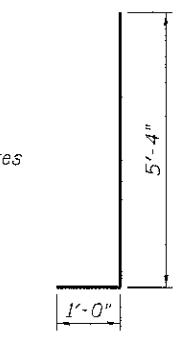
REVEAL STRIP

Cost included with Concrete Structures



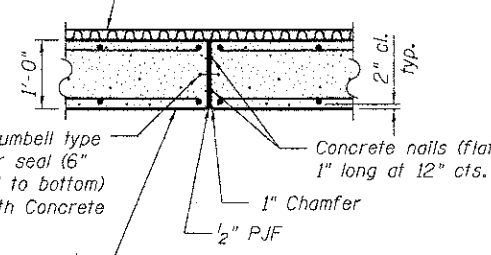
V100(E) and V101(E) BARS FIELD CUTTING DIAGRAM

*Order $v_{100}(E)$ and $v_{101}(E)$ bars full length. Cut to fit and use remainder in adjacent wall section.

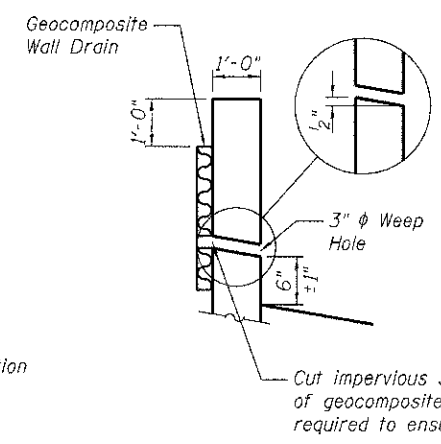
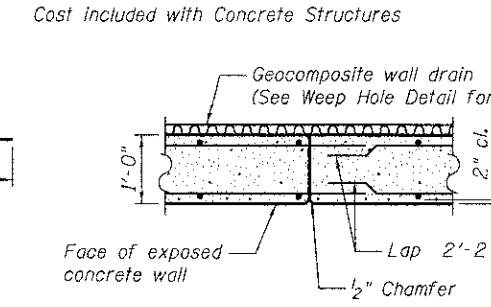


V100(E) BAR

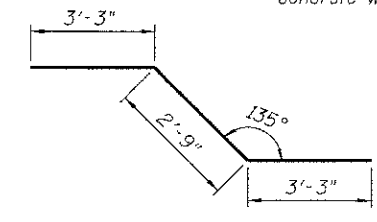
EXPANSION JOINT



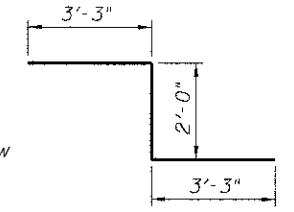
CONSTRUCTION JOINT



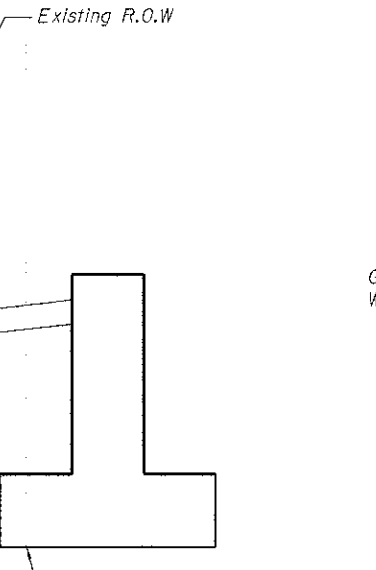
WEEP HOLE DRAIN DETAIL



W101(E) BAR



W102(E) BAR



Protect existing building foundation according to Section 107.20, sta. 129+84.34 to sta. 130+30.58. Foundation type unknown.

RETAINING WALL DETAILS
 JOHNSBURG ROAD (FAU ROUTE 0168)
 SECTION NO. 05-00314-00-WR
 McHENRY COUNTY
 STATION 129+45.21 TO STATION 130+65.17

COMPANY NAME: HRGreen.com
 CLIENT: HRGreen
 DATE PLOTTED: 12/19/2012 3:08:05 PM
 FILE NAME: 016827-ref-0168.dgn
 PLOT DRIVER: pdf-dw-no-hv-plot.ctb
 PEN TABLE: standard-1-trans.tbl

USER NAME = jettone	DESIGNED - JPG	REVISED -
PLotted SCALE =	CHECKED - RGD	REVISED -
PLotted DATE = 12/19/2012	DRAWN - WJH	REVISED -
	CHECKED - 12/19/12	REVISED -

McHENRY COUNTY
DIVISION OF TRANSPORTATION

F.A. RTE. 0168	SECTION 05-00314-00-WR	COUNTY McHENRY	TOTAL SHEETS 187	SHEET NO. 124
SHEET NO. SA-03 OF SA-04 SHEETS				CONTRACT NO. 63515
				ILLINOIS FED. AID PROJECT #FEDPROJN05