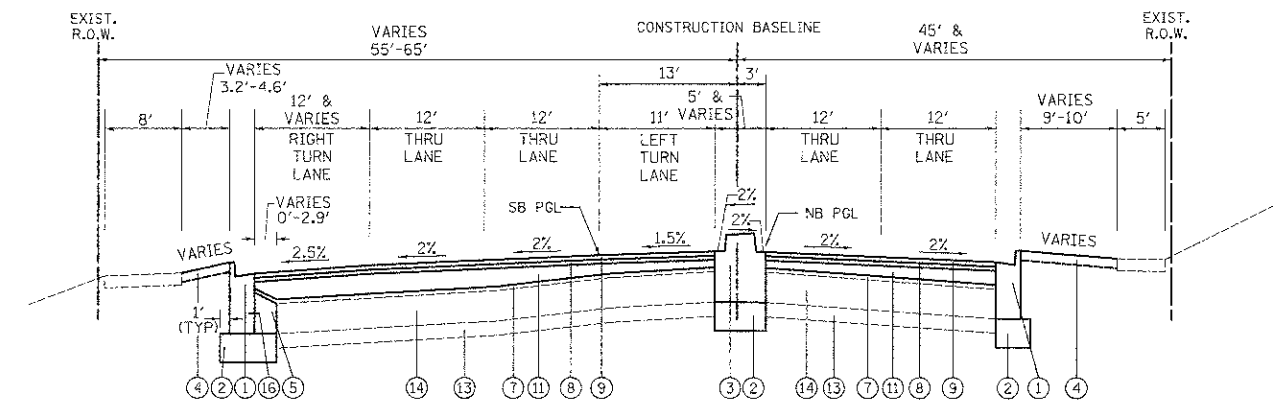


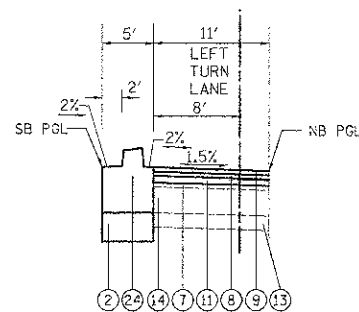
PROPOSED TYPICAL SECTION

BARRINGTON ROAD
STATION 223+20 TO STATION 224+94



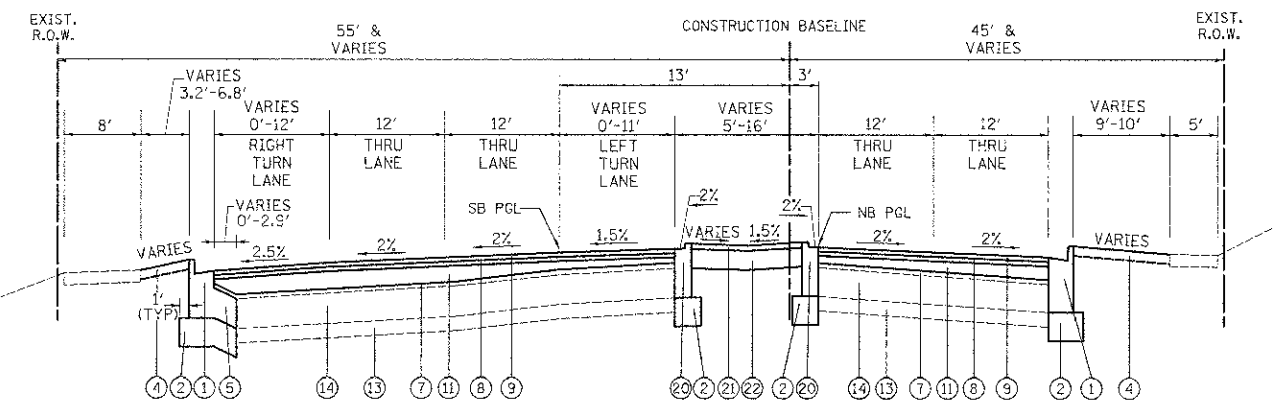
PROPOSED TYPICAL SECTION

BARRINGTON ROAD
STATION 229+13 TO STATION 231+97.9



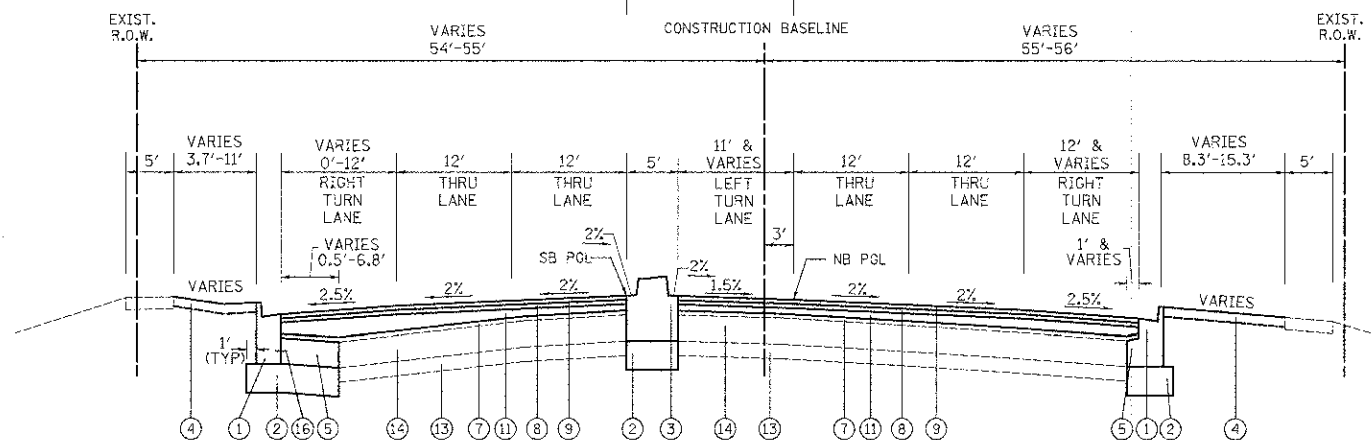
PROPOSED TYPICAL SECTION

BARRINGTON ROAD
STATION 226+94 TO STATION 224+94



PROPOSED TYPICAL SECTION

BARRINGTON ROAD
STATION 231+97.9 TO STATION 233+78.58



PROPOSED TYPICAL SECTION

BARRINGTON ROAD
STATION 224+94 TO STATION 229+13

LEGEND

- ① PROPOSED COMBINATION CONCRETE CURB AND GUTTER, TYPE B-6.24 (GUTTER SLOPE 6% UNLESS OTHERWISE NOTED)
- ② PROPOSED AGGREGATE SUBGRADE IMPROVEMENT 12"
- ③ PROPOSED CONCRETE MEDIAN, TYPE SB-6.12
- ④ PROPOSED TOPSOIL, FURNISH AND PLACE 4" AND SODDING, SALT TOLERANT
- ⑤ PROPOSED P.C.C. BASE COURSE, 10"
- ⑥ PROPOSED P.C.C. SIDEWALK 5 INCH
- ⑦ PROPOSED POLYMERIZED LEVELING BINDER (MACHINE METHOD), IL-4.75, N50, 3/4"
- ⑧ PROPOSED POLYMERIZED HOT-MIX ASPHALT BINDER COURSE, IL-19.0, N90, 2 1/4"
- ⑨ PROPOSED POLYMERIZED HOT-MIX ASPHALT SURFACE COURSE, MIX F, N90, 1 3/4"
- ⑩ PROPOSED CONCRETE MEDIAN SURFACE, 4"
- ⑪ PROPOSED LEVELING BINDER (MACHINE METHOD), SPECIAL
- ⑫ EXISTING CONCRETE PAVEMENT (TO REMAIN IN PLACE)
- ⑬ EXISTING GRANULAR SUBBASE (TO REMAIN IN PLACE)
- ⑭ EXISTING HOT-MIX ASPHALT PAVEMENT (TO REMAIN IN PLACE)
- ⑮ NOT USED
- ⑯ PROPOSED #6 EPOXY COATED, DEFORMED TIE BAR (PER STANDARD 606001) (INCLUDED IN THE COST OF CONCRETE MEDIAN, OF THE TYPE SPECIFIED OR COMBINATION CONCRETE CURB AND GUTTER, TYPE B-6.24) (EMBED 8" MINIMUM)
- ⑰ PROPOSED #6 EPOXY COATED TIE BAR, DEFORMED, 24" LONG @ 24" C-C (DRILLED AND GROUTED) (EMBED 8" MINIMUM)
- ⑱ PROPOSED COMBINATION CONCRETE CURB AND GUTTER, TYPE B-6.12 (GUTTER SLOPE 6% UNLESS OTHERWISE NOTED)
- ⑲ NOT USED
- ⑳ PROPOSED COMBINATION CONCRETE CURB AND GUTTER, TYPE M-2.12 (GUTTER SLOPE 6% UNLESS OTHERWISE NOTED)
- ㉑ PROPOSED HOT-MIX ASPHALT SURFACE COURSE, MIX "D", N50, 2"
- ㉒ PROPOSED HOT-MIX ASPHALT BASE COURSE, 8"
- ㉓ NOT USED
- ㉔ PROPOSED CONCRETE MEDIAN, TYPE SB-6.24 (MODIFIED)
- ㉕ PROPOSED CONCRETE MEDIAN, TYPE C-4
- ㉖ PROPOSED SUBBASE GRANULAR MATERIAL, TYPE B, 2"
- ㉗ PROPOSED MEDIAN SOIL MIX FURNISH AND PLACE
- ㉘ PROPOSED HOT-MIX ASPHALT BINDER COURSE, IL-19.0, N50 (VARIABLE THICKNESS, MIN 2 1/2")
- ㉙ PROPOSED HOT-MIX ASPHALT SURFACE COURSE, MIX "D", N50, 1 1/2"
- ㉚ PROPOSED COMBINATION CONCRETE CURB AND GUTTER, TYPE B-9.12 (GUTTER SLOPE 6% UNLESS OTHERWISE NOTED)
- ㉛ PROPOSED HOT-MIX ASPHALT BINDER COURSE, IL-19.0, N50 2 1/2"
- ㉜ PROPOSED HOT-MIX ASPHALT BASE COURSE, 6"
- ㉝ PROPOSED PAVEMENT FABRIC
- ㉞ PROPOSED SUBBASE GRANULAR MATERIAL, TYPE B

FILE NAME = ... \cad\sheet\2329_Typ_Prop_22.dgn

USER NAME = djh
PLOT SCALE = 50.0000 / in.
PLOT DATE = 8/16/2012

DESIGNED - JAT
DRAWN - JAT
CHECKED - DJK
DATE - 8-20-12

REVISED -
REVISED -
REVISED -
REVISED -

STATE OF ILLINOIS
DEPARTMENT OF TRANSPORTATION

BARRINGTON ROAD
PROPOSED TYPICAL SECTIONS

NOT TO SCALE SHEET NO. 2 OF 6 SHEETS STA. TO STA.

F.A.U. RTE.	SECTION	COUNTY	TOTAL SHEETS	SHEET NO.
1322	01-00074-00-CH	COOK	245	19
CONTRACT NO. 63629				
FED. ROAD DIST. NO. 1 (ILLINOIS) FED. AID PROJECT M-CM-8003(05)				