

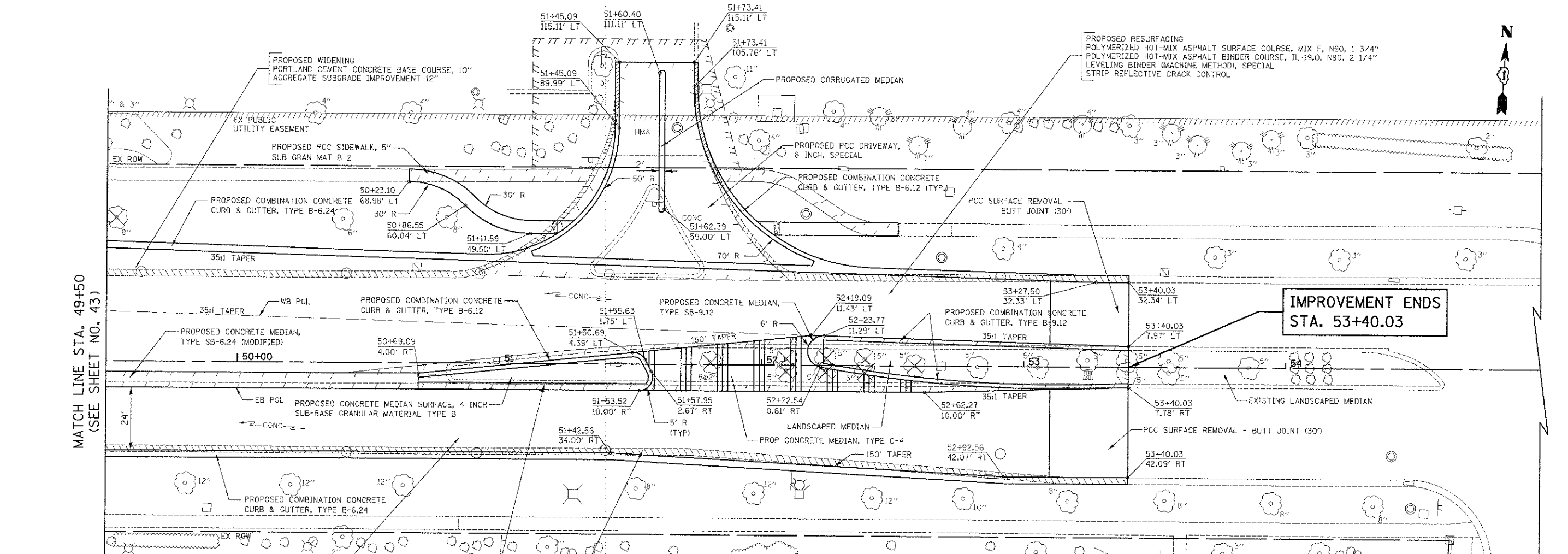
DATE	
BY	
CHECKED	
NO. OF SHEETS	
NO. OF PAGES	
NO. OF FIGURES	
NO. OF PLANS	
NO. OF PROFILES	
NO. OF SECTIONS	
NO. OF DETAILS	
NO. OF NOTES	
NO. OF REFERENCES	
NO. OF REVISIONS	
NO. OF APPROVALS	
NO. OF COMMENTS	
NO. OF CHANGES	
NO. OF ADDITIONS	
NO. OF DELETIONS	
NO. OF MODIFICATIONS	
NO. OF CORRECTIONS	
NO. OF IMPROVEMENTS	
NO. OF ENHANCEMENTS	
NO. OF UPDATES	
NO. OF REVISIONS	
NO. OF APPROVALS	
NO. OF COMMENTS	
NO. OF CHANGES	
NO. OF ADDITIONS	
NO. OF DELETIONS	
NO. OF MODIFICATIONS	
NO. OF CORRECTIONS	
NO. OF IMPROVEMENTS	
NO. OF ENHANCEMENTS	
NO. OF UPDATES	

DATE	
BY	
CHECKED	
NO. OF SHEETS	
NO. OF PAGES	
NO. OF FIGURES	
NO. OF PLANS	
NO. OF PROFILES	
NO. OF SECTIONS	
NO. OF DETAILS	
NO. OF NOTES	
NO. OF REFERENCES	
NO. OF REVISIONS	
NO. OF APPROVALS	
NO. OF COMMENTS	
NO. OF CHANGES	
NO. OF ADDITIONS	
NO. OF DELETIONS	
NO. OF MODIFICATIONS	
NO. OF CORRECTIONS	
NO. OF IMPROVEMENTS	
NO. OF ENHANCEMENTS	
NO. OF UPDATES	

MATCH LINE STA. 49+50
(SEE SHEET NO. 43)

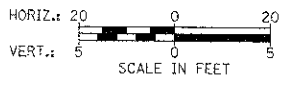
IMPROVEMENT ENDS
STA. 53+40.03

IMPROVEMENT ENDS
STA. 53+40.03

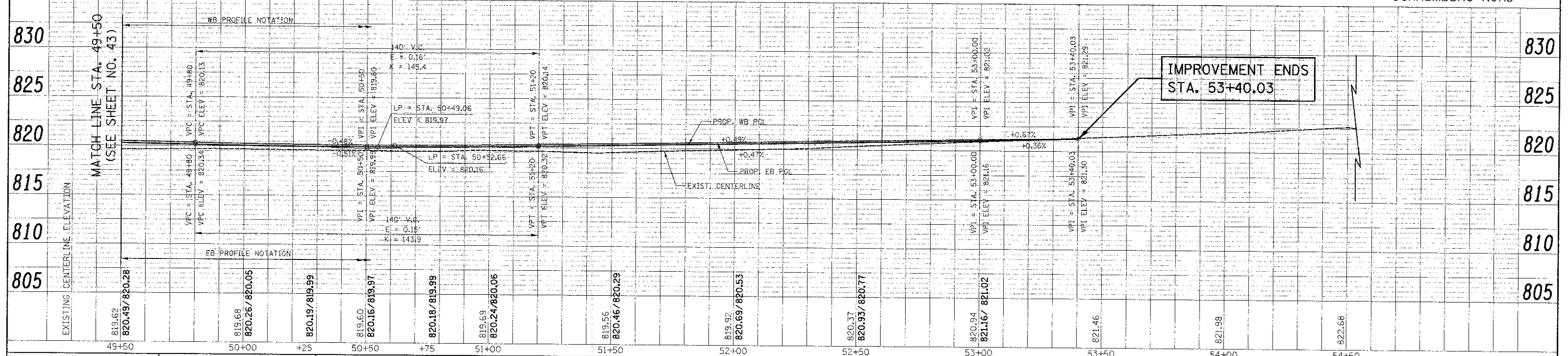


NOTES:

1. CONSTRUCT BASE COURSE MONOLITHICALLY WITH CURB & GUTTER WHEN WIDENING IS LESS THAN 3 FEET - SEE DETAIL.
2. WHEN REMOVING THE EXISTING CURB AND GUTTER FROM PAVEMENT TO REMAIN, THE CONTRACTOR SHALL SAW CUT THE EXISTING CURB AND GUTTER TO SEVER THE EXISTING TIE BARS TO MAINTAIN A CLEAN, VERTICAL EDGE. THIS WORK SHALL BE INCLUDED IN THE COST OF "COMBINATION CURB AND GUTTER REMOVAL".



SCHAUMBURG ROAD



FILE NAME: ...\\2529\oad\shes\2329_PP_10.dgn	USER NAME: djk	DESIGNED: JAT	REVISOR:	STATE OF ILLINOIS	SCHAUMBURG ROAD	F.A.U. RTE. 1322	SECTION 01-00074-CO-CH	COUNTY COOK	TOTAL SHEETS 245	SHEET NO. 44
PLT SCALE: 22.0000	CHECKED: DJK	DATE: 8-20-12	REVISOR:	DEPARTMENT OF TRANSPORTATION	PLAN AND PROFILE	SCALE: 1" = 20'			SHEET NO. 10 OF 14 SHEETS STA. 49+50 TO STA. 53+40.03	
PLT DATE: 8/16/2012	DATE: 8-20-12					FED. ROAD DIST. NO. 1 ILLINOIS FED. AID PROJECT M-CMM-000305D			CONTRACT NO. 63629	