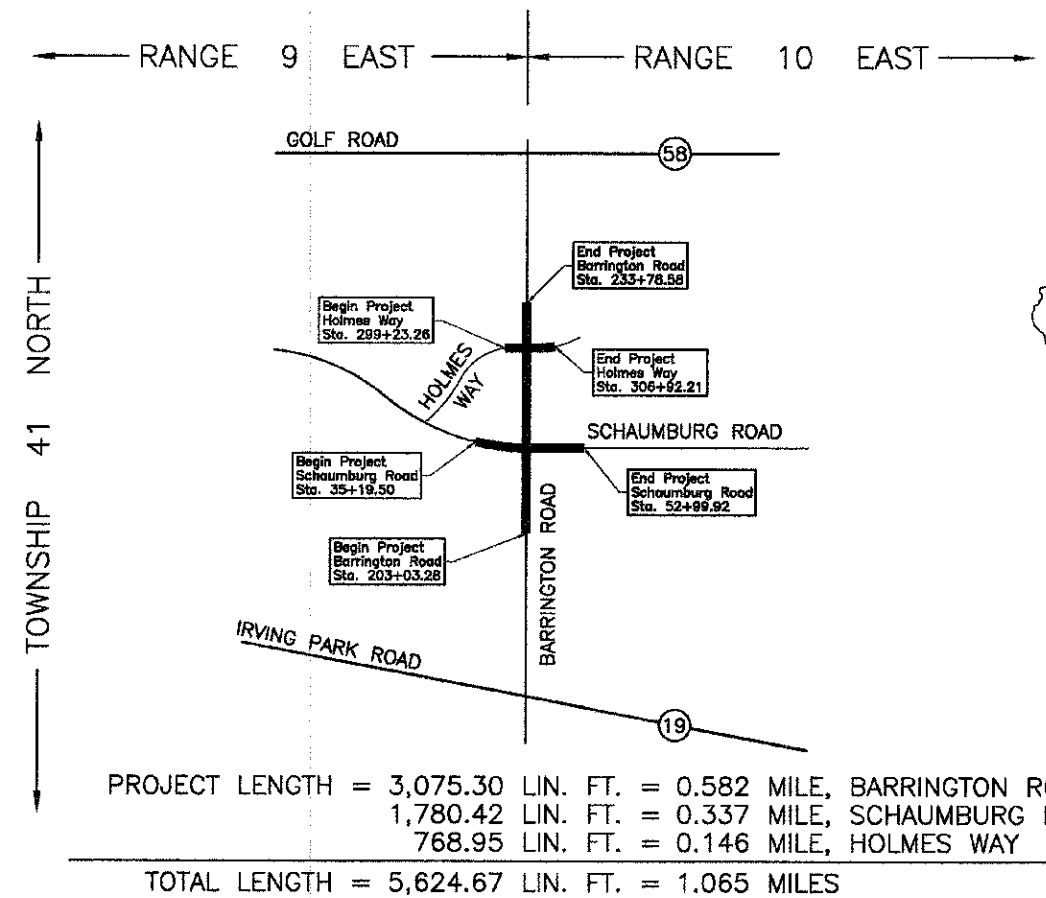
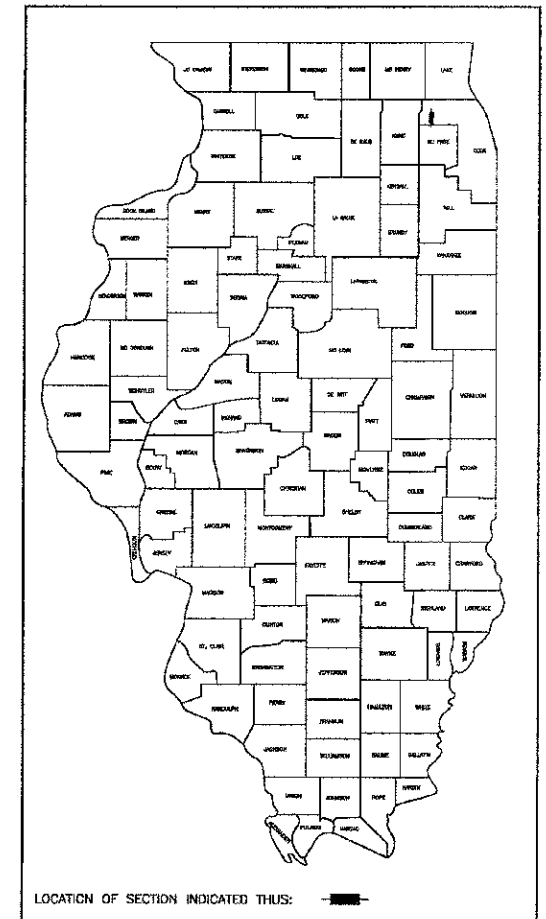


STATE OF ILLINOIS
DEPARTMENT OF TRANSPORTATION
RIGHT OF WAY PLANS
FOR PROPOSED
FEDERAL AID HIGHWAY

ROUTE: F.A.U. 1322 (SCHAUMBURG ROAD)
SECTION: 01-00074-00-CH
PROJECT NO.: CMM-9003(716)
JOB NO.: R-90-004-11
COUNTY: COOK
LIMITS: @ BARRINGTON ROAD

* F.A.U. 1322 (SCHAUMBURG ROAD)				
F.A. RTE.	SECTION	COUNTY	TOTAL SHEETS	SHEET NO.
1322	01-00074-00-CH	COOK	16	1
** 01-00074-00-CH R-90-004-11				



APPROVED _____ 20 _____
LOCAL AGENCY OFFICIAL

APPROVED _____ 20 _____
ENGINEER OF LAND ACQUISITION

APPROVED _____ 20 _____
ENGINEER OF LOCAL ROADS & STREETS

APPROVED _____ 20 _____
DISTRICT ENGINEER

STATE OF ILLINOIS
DEPARTMENT OF TRANSPORTATION

COUNTY COOK SECTION 01-00074-00-CH ROUTE F.A.U. 1322 (SCHAUMBURG ROAD) R-90-004-11

FILE NAME = ...\\oad\sheet\2329_Plate.01.dgn	USER NAME = djk	DESIGNED = JAT	REVISED =	STATE OF ILLINOIS DEPARTMENT OF TRANSPORTATION	PLAT OF HIGHWAYS	F.A.U. RTE.	SECTION	COUNTY	TOTAL SHEETS	SHEET NO.
	DRAWN = JAT	REVISED =				1322	01-00074-00-CH	COOK	245	85
	CHECKED = DJK	REVISED =				CONTRACT NO. 63629				
	PLT DATE = 8/16/2012	DATE = 8-20-12	REVISED =	SHEET NO. 1 OF 16 SHEETS		FED. ROAD DIST. NO. 1 (ILLINOIS) FED. AID PROJECT M-CMM-9003(051)				