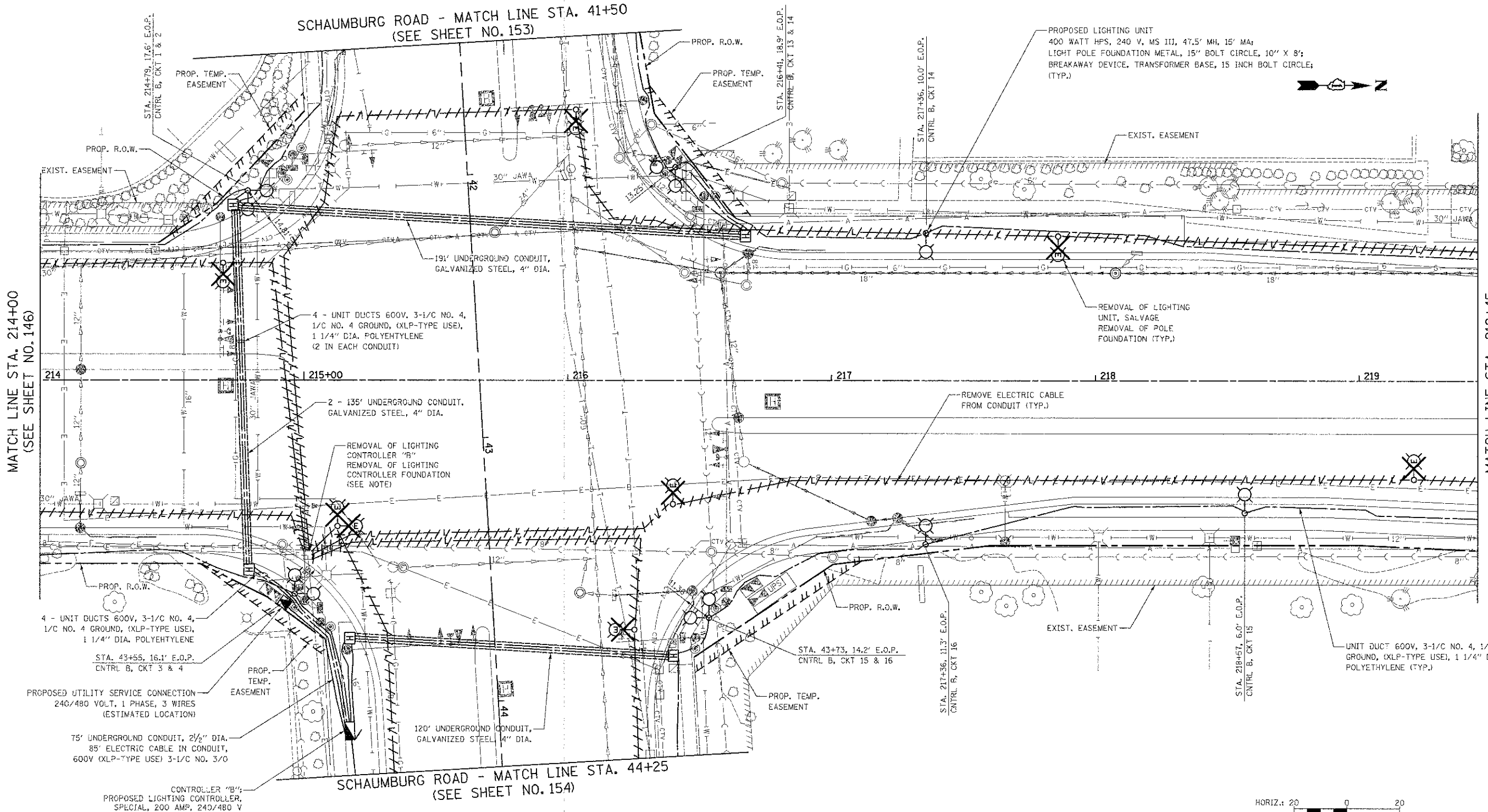


NOTE:
EXISTING CONTROLLER "B" SHALL REMAIN OPERATIONAL UNTIL THE TEMPORARY LIGHTING SYSTEM IS IN PLACE AND IS OPERATIONAL.



PROPOSED LIGHTING UNIT
400 WATT HPS, 240 V, MS III, 47.5' MH, 15' MA;
LIGHT POLE FOUNDATION METAL, 15" BOLT CIRCLE, 10" X 8";
BREAKAWAY DEVICE, TRANSFORMER BASE, 15 INCH BOLT CIRCLE;
(TYP.)

REMOVAL OF LIGHTING UNIT, SALVAGE
REMOVAL OF POLE FOUNDATION (TYP.)

REMOVE ELECTRIC CABLE FROM CONDUIT (TYP.)

SCHAUMBURG ROAD - MATCH LINE STA. 41+50
(SEE SHEET NO. 153)

SCHAUMBURG ROAD - MATCH LINE STA. 44+25
(SEE SHEET NO. 154)

MATCH LINE STA. 214+00
(SEE SHEET NO. 146)

MATCH LINE STA. 219+45
(SEE SHEET NO. 148)



BARRINGTON ROAD

DATE	
NO.	
PLAN	
NO.	
DATE	
NO.	
PLAN	
NO.	

DATE	
NO.	
PROFILE	
NO.	
DATE	
NO.	
PROFILE	
NO.	

FILE NAME
...road\sheet\2329.LIGHT_03.dgn

USER NAME = djk
PLCT SCALE = 20.0000 / 1" = 20'
PLOT DATE = 8/16/2012

DESIGNED - SJC
DRAWN - SJC
CHECKED - DNM
DATE - 8-20-12

REVISED -
REVISED -
REVISED -
REVISED -

STATE OF ILLINOIS
DEPARTMENT OF TRANSPORTATION

BARRINGTON ROAD
LIGHTING PLANS

SCALE: 1" = 20' SHEET NO. 3 OF 12 SHEETS STA. 214+00 TO STA. 219+45

F.A.J. RTE.	SECTION	COUNTY	TOTAL SHEETS	SHEET NO.
1322	01-C0074-00-CH	COOK	245	147
CONTRACT NO. 63629				
FED. ROAD DIST. NO. 1 ILLINOIS FED. AID PROJECT M-CMM-9003050				