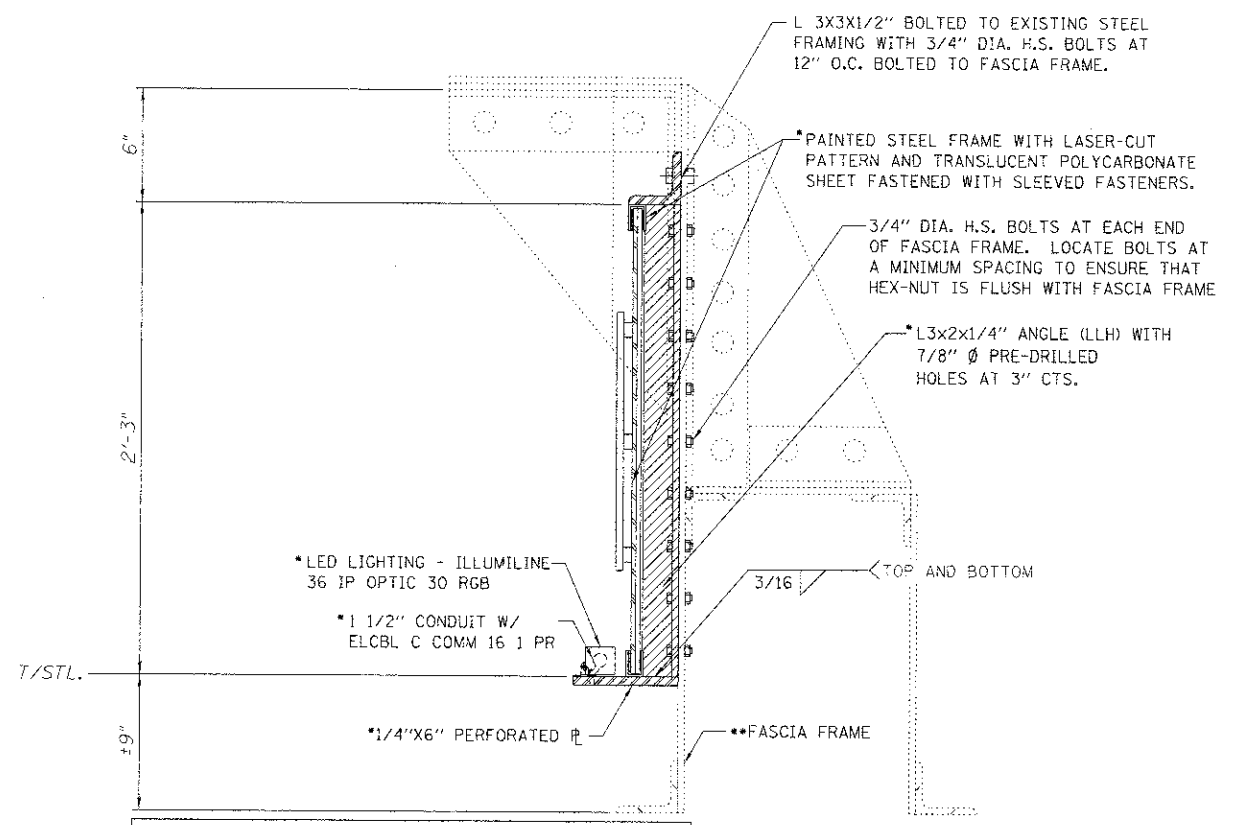


SECTION A-A

PROTECTIVE SHIELD, SPECIAL DETAIL

APPLIES TO RIDGELAND AVENUE ONLY



* DENOTES ALL WORK SHALL BE INCLUDED IN THE UNIT PRICE FOR GATEWAY MONUMENT SIGN COMPLETE AND WILL NOT BE MEASURED SEPARATELY FOR PAYMENT.

** EXISTING FASCIA FRAME WAS OBSERVED TO BE DAMAGED. CONTRACTOR MAY LOCATE BOLTS ALONG LENGTH OF THE ANGLE TO ENSURE THAT HEX-NUTS ARE FLUSH WITH THE FASCIA FRAME. MINIMUM SPACING OF BOLTS IS 3".

GATEWAY MONUMENT SIGN COMPLETE DETAIL

APPLIES TO RIDGELAND AVENUE ONLY

FILE NAME = S:\JDL\67200-6799\6784\B2\Access\CAD\ Sheets\0163722-shield.dwg

SA STRAND ASSOCIATES

1170 SOUTH HOUBOLT ROAD
JOLIET, ILLINOIS 62431
(815) 744-4200

USER NAME = dennis	DESIGNED - JDM	REVISED - 01-07-2013
PLT SCALE = 0.0058" / IN.	DRAWN - JKP	REVISED -
PLT DATE = 1/7/2013	CHECKED - MTC	REVISED -
	DATE - 05-07-2012	REVISED -

STATE OF ILLINOIS DEPARTMENT OF TRANSPORTATION

RIDGELAND AVENUE GATEWAY DETAILS

SCALE: AS SHOWN SHEET NO. OF SHEETS STA. TO STA.

F.A.U. RTE. 2783	SECTION 11-00253-00-LS	COUNTY COOK	TOTAL SHEETS 25	SHEET NO. 14
CONTRACT NO. 63722				
ILLINOIS FED. AID PROJECT				