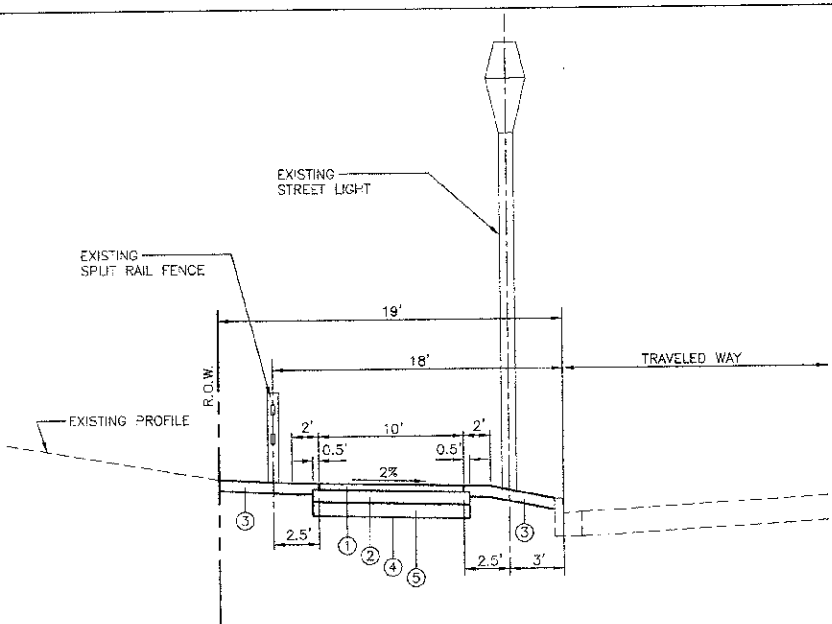


DATE: _____
 BY: _____
 SURVEYED: _____
 PLOTTED: _____
 PLAN: _____
 NOTE BOOK NO.: _____
 CHECKED: _____
 DATE: _____
 FILE NAME: _____

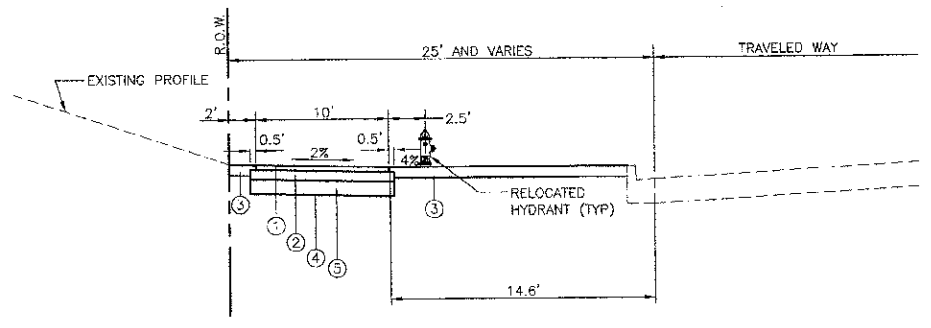
DATE: _____
 BY: _____
 SURVEYED: _____
 PLOTTED: _____
 PROFILE: _____
 CHECKED: _____
 DATE: _____
 FILE NAME: _____

ENGINEERING RESOURCE ASSOC., INC.
 1570 WEST AVENUE SUITE 150
 WARRENVILLE, ILLINOIS 60555
 PHONE (630) 399-3000 FAX (630) 395-2152

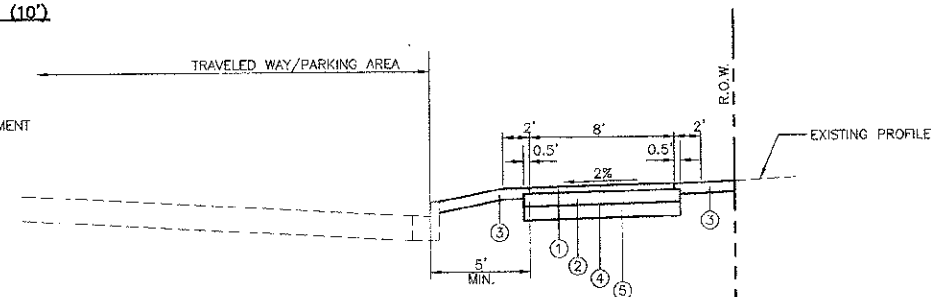
- ① HOT-MIX ASPHALT SURFACE COURSE, MIX D, N50, 3"
- ② AGGREGATE BASE COURSE, TYPE B, 8"
- ③ TOPSOIL, 6" (FURNISH AND PLACE)
- ④ GEOTECHNICAL FABRIC FOR GROUND STABILIZATION.
- ⑤ REMOVAL OF UNSUITABLE MATERIAL, REPLACE WITH PGE AS DIRECTED BY ENGINEER.



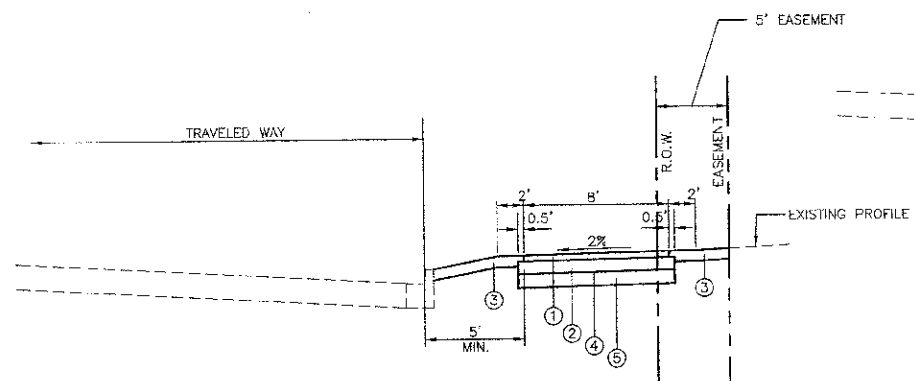
PROPOSED PATH TYPICAL SECTION (10')
 N.T.S.
 (STA. 99+10 TO 106+86)



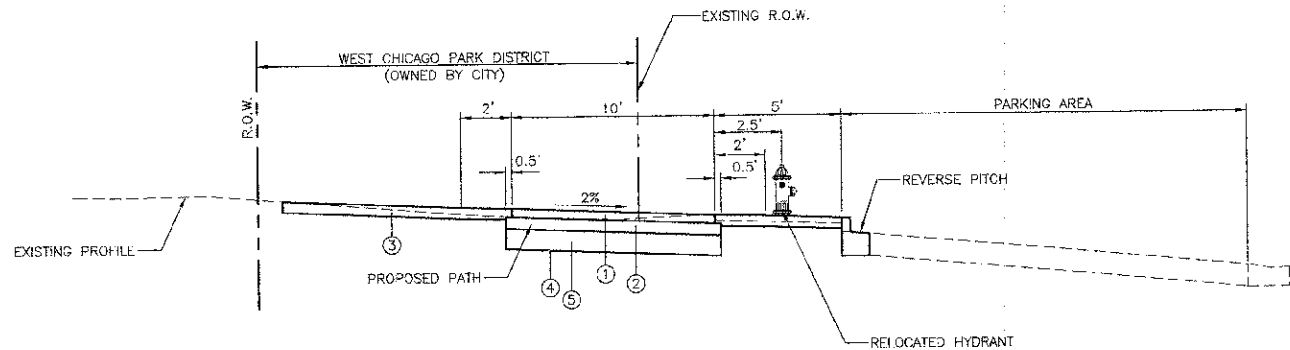
PROPOSED PATH TYPICAL SECTION (10')
 N.T.S.
 (STA. 132+50 TO 138+80)



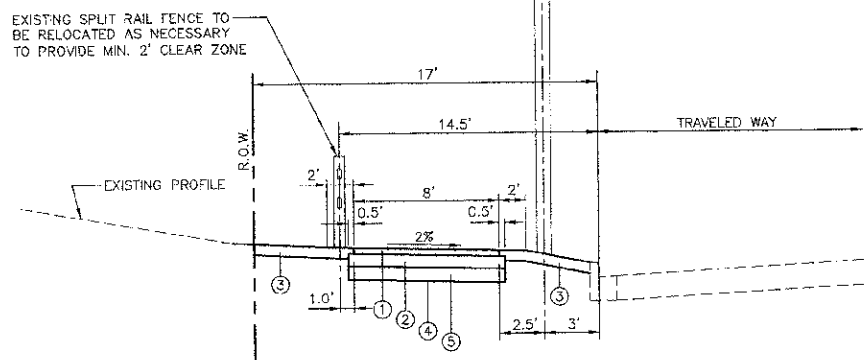
PROPOSED PATH TYPICAL SECTION (8')
 N.T.S.
 (STA. 150+89 TO 166+20)



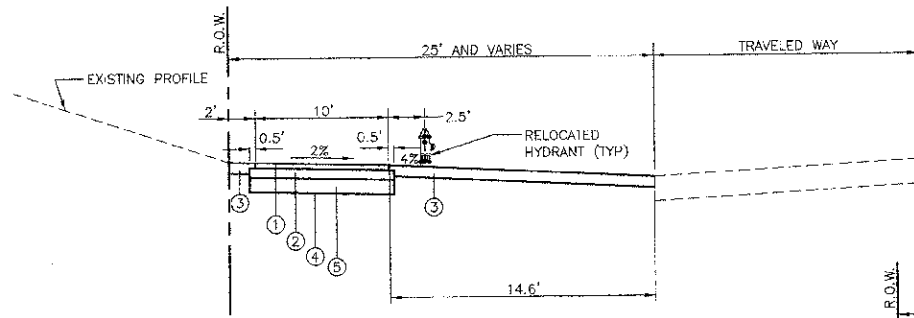
PROPOSED PATH TYPICAL SECTION (8')
 N.T.S.
 (STA. 145+67 TO 150+89)



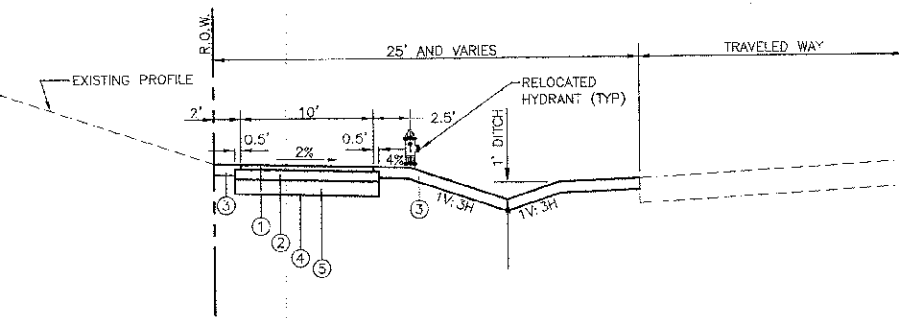
PROPOSED PATH TYPICAL SECTION (10')
 N.T.S.
 (STA. 106+86 TO 113+68)



PROPOSED PATH TYPICAL SECTION (8')
 N.T.S.
 (STA. 139+85 TO 145+14)



PROPOSED PATH TYPICAL SECTION (10')
 N.T.S.
 (STA. 113+68 TO 116+50)



PROPOSED PATH TYPICAL SECTION (10')
 N.T.S.
 (STA. 116+50 TO 132+50)

LEGEND

	EXISTING	PROPOSED
CURB & GUTTER	---W---	---W---
WATER	---W---	---W---
GAS	---G---	---G---
SANITARY SEWER	---S---	---S---
STORM SEWER	---ST---	---ST---
MANHOLE	⊙	⊙
CATCH BASIN	○	⊙
CURB INLET	⊠	⊠
VALVE VAULT	⊕	⊕
VALVE & BOX	⊗	⊗
BUFFALO BOX	⊙	⊙
GAS VALVE	⊙	⊙
HYDRANT	⊙	⊙
HANDICAPPED RAMP	⊗	⊗
FILL STRUCTURE	⊗	⊗
REMOVE STRUCTURE	⊗	⊗
ADJUST STRUCTURE	⊗	⊗
UTILITY POLE	⊙	⊙
BORING LOCATION	⊙	⊙
TREE	⊙	⊙
REMOVE TREE	⊗	⊗
INLET-SPECIAL	⊙	⊙
BUTT JOINT	⊗	⊗
SIDEWALK REMOVE & REPLACE	⊗	⊗
STREET LIGHT	⊙	⊙

HOT-MIX ASPHALT MIXTURE REQUIREMENTS	
MIXTURE TYPE	AIR VOIDS @ Ndes
HOT-MIX ASPHALT SURFACE COURSE, MIX "D", N50 ; 3" (I.L. 9.5 MM)*	4% @ 50 Cgr.

*THIS MIX SHALL BE USED FOR THE PATH AND FOR DRIVEWAYS

THE UNIT WEIGHT USED TO CALCULATE ALL HMA SURFACE MIXTURE QUANTITIES IS 112 LBS/SQ. YD./IN.

THE "AC TYPE" FOR POLYMERIZED HMA MIXES SHALL BE "SBS/SBR PG 76-22" AND FOR NON-POLYMERIZED HMA THE "AC TYPE" SHALL BE "PG 64-22" UNLESS MODIFIED BY DISTRICT ONE SPECIAL PROVISIONS. FOR "PERCENT OF RAP" SEE DISTRICT ONE SPECIAL PROVISIONS.

FILE NAME = H:\West Chicago\100810.00 Bike Trail Connector\CADD\Final Design\100810 Final Detail.dwg

USER NAME = am10102012	DESIGNED -- BD	REVISED --
PLOT SCALE =	DRAWN -- RT	REVISED --
PLOT DATE = 4/17/2012	CHECKED -- JFM	REVISED --
	DATE -- APRIL, 2012	REVISED --

STATE OF ILLINOIS
 DEPARTMENT OF TRANSPORTATION

TYPICAL SECTIONS AND LEGEND

SCALE: NONE SHEET NO. 1 OF 1 SHEETS

F.A. RTE.	SECTION	COUNTY	TOTAL SHEETS	SHEET NO.
00-00084-00-01	DuPAGE	31	4	4
CONTRACT NO. 63730				
FED. ROAD DIST. NO. 1 ILLINOIS FED. AID PROJECT				