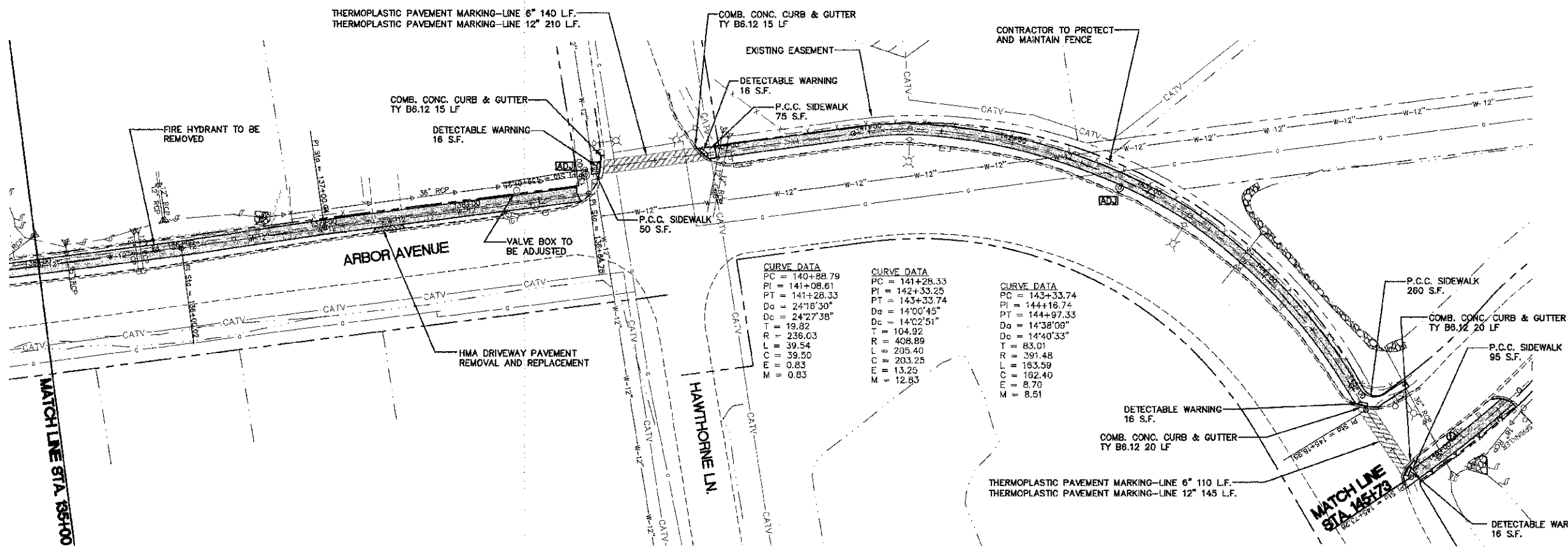
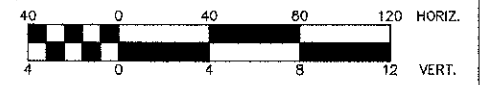


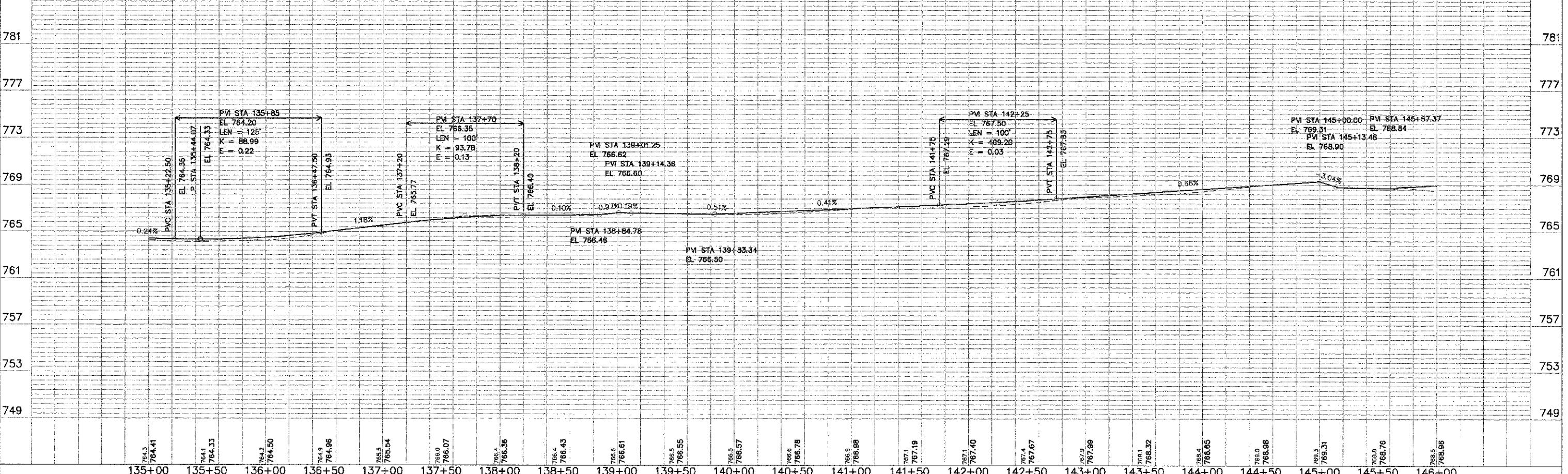
DATE	
BY	
REVISIONS	
PLANNED	
ALIGNED	
CHECKED	
NO. 1	
NO. 2	
NO. 3	
NO. 4	
NO. 5	
NO. 6	
NO. 7	
NO. 8	
NO. 9	
NO. 10	



- NOTES:
- NO PAYMENT WILL BE MADE FOR RESTORATION OUTSIDE THE LIMITS OF CONSTRUCTION AREA UNLESS DIRECTED BY THE ENGINEER.
 - ALL PROPOSED CURB AND GUTTER SHALL BE TYPE B6.12 UNLESS SPECIFIED OTHERWISE.



DATE	
BY	
REVISIONS	
PLANNED	
ALIGNED	
CHECKED	
NO. 1	
NO. 2	
NO. 3	
NO. 4	
NO. 5	
NO. 6	
NO. 7	
NO. 8	
NO. 9	
NO. 10	



ENGINEERING RESOURCE ASSOC., INC.
 CONSULTING ENGINEERS, SURVEYORS & SURVEYORS
 38701 WEST AVENUE, SUITE 150
 WARRERVILLE, ILLINOIS 60555
 PHONE (630) 393-3060 FAX (630) 393-2152



FILE NAME =	USER NAME = r-tanner	DESIGNED = BD	REVISED = 01-14-2013	STATE OF ILLINOIS DEPARTMENT OF TRANSPORTATION	ARBOR AVENUE PLAN AND PROFILE		F.A. RTE.	SECTION	COUNTY	TOTAL SHEETS	SHEET NO.	
H:\West Chicago\100810.00 3ike Trail Connector\CADD\Final Design\RCp05006.dwg		DRAWN = RT	REVISED = ---		SCALE: 1"=40'H, 1"=4'V	SHEET NO. 5 OF 7 SHEETS	STA. 135+00 TO STA. 145+73	00-00064-00-BT	DuPAGE	ILLINOIS	3	13
PLLOT SCALE =		CHECKED = JFM	REVISED = ---									
PLLOT DATE = 1/14/2013		DATE = APRIL, 2012	REVISED = ---									
							CONTRACT NO. 63730		FED. ROAD DIST. NO. 1 ILLINOIS FED. AID PROJECT			