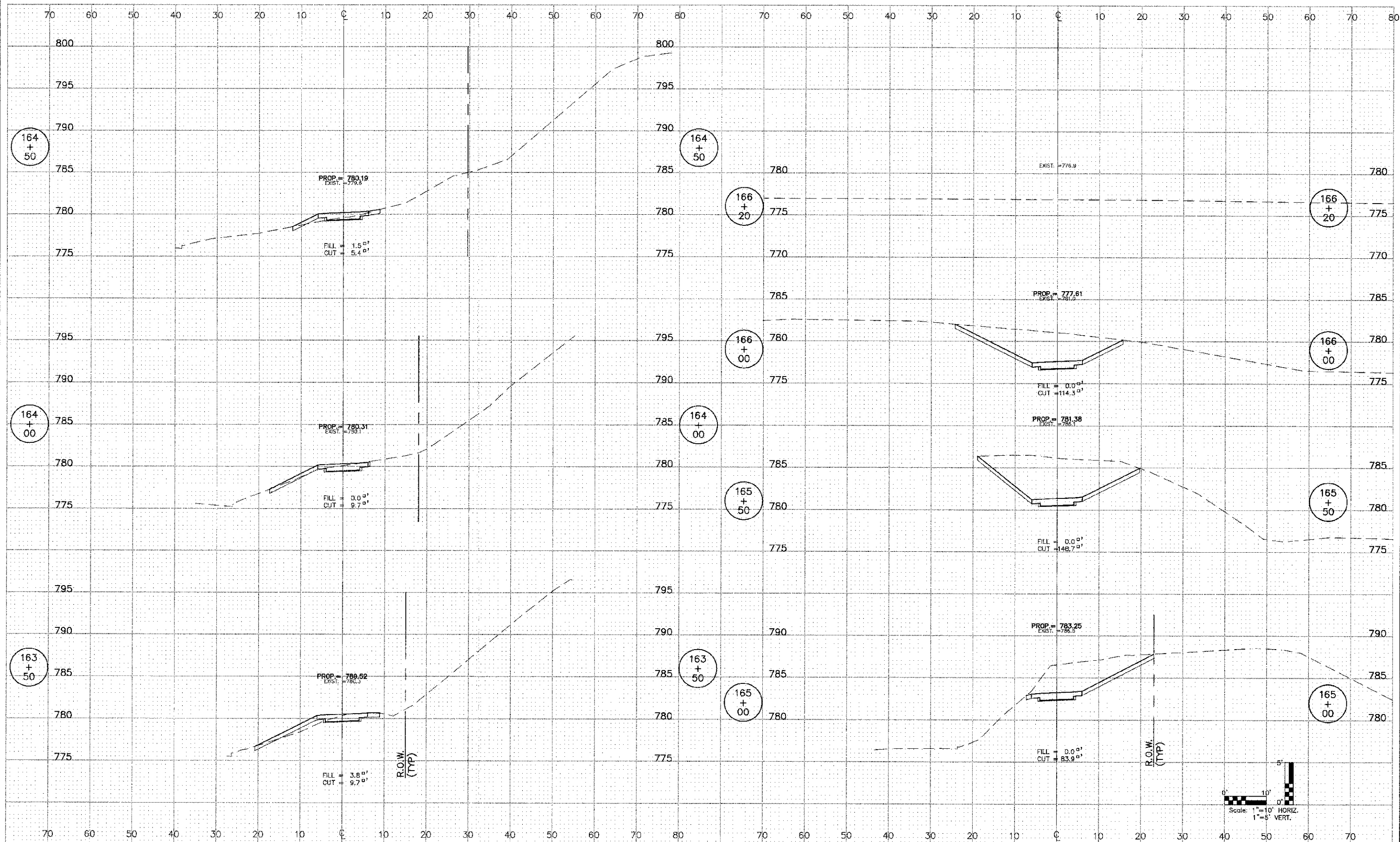


DATE	BY
PROJECT	PLANNED
PLAN	NO. _____
NOTE BOOK	NO. _____
NO.	NO. _____
NO.	NO. _____

DATE	BY
PROJECT	PLANNED
PROFILE	NO. _____
NOTE BOOK	NO. _____
NO.	NO. _____
NO.	NO. _____

ENGINEERING RESOURCE ASSOC., INC.  
CONSULTING ENGINEERS, SCIENTISTS & SURVEYORS  
3870 WEST AVENUE, SUITE 150  
WARRNEVILLE, ILLINOIS 60555  
PHONE (630) 393-3060 FAX (630) 393-2152



FILE NAME	USER NAME	DESIGNED	REVISED
H:\West Chicago\100810.00 BRa Trill	mmaslowski	BD	---
Contributor\CADD\Fix-J Design\c012003.dwg		DRAWN	RT
		CHECKED	JFM
		DATE	APRIL 2012
		REVISED	---

STATE OF ILLINOIS  
DEPARTMENT OF TRANSPORTATION

N. KINGS CROSS

SCALE: 1"=10'H; 1"=5'V SHEET NO. 12 OF 12 SHEETS STA. 163+50 TO STA. 166+20

F.A.R.T.E.	SECTION	COUNTY	TOTAL SHEETS	SHEET NO.
	00-0C064-00-BT	DuPAGE	31	31
			CONTRACT NO. 63730	
FED. ROAD DIST. NO. 1 ILLINOIS FED. AID PROJECT				