

F.A.U. RTE.	SECTION	COUNTY	TOTAL SHEETS	SHEET NO.
1209	03-00033-12-CH	LAKE	189	1
FED. ROAD DIST. NO. 1	ILLINOIS	CONTRACT NO. 63766		

INDEX OF SHEETS

SHEET NO.	DESCRIPTION
1	COVER SHEET /INDEX OF SHEETS
2	INDEX OF SHEETS /INDEX OF STANDARDS /GENERAL NOTES
3	GENERAL NOTES
4	UTILITY COORDINATION SUMMARY
5-7	SUMMARY OF QUANTITIES
8-14	EXISTING AND PROPOSED TYPICAL SECTIONS
15-18	SCHEDULE OF QUANTITIES
19-21	ALIGNMENT, TIES, AND BENCHMARKS
22-29	REMOVAL PLAN
30-44	ROADWAY PLAN AND PROFILE
45-61	SUGGESTED STAGES OF CONSTRUCTION AND TRAFFIC CONTROL
62-66	EROSION, SEDIMENT CONTROL, AND LANDSCAPING
67-81	DRAINAGE AND UTILITIES PLAN AND PROFILE
82-84	DETENTION AND COMPENSATORY STORAGE SITES
85	CONSTRUCTION DETAILS
86-95	PLAT OF HIGHWAYS
96-97	INTERSECTION PAVING DETAILS
98-101	PAVEMENT MARKING AND SIGNING PLAN
102-130	TRAFFIC SIGNAL PLANS AND DETAILS
131-133	STRUCTURAL PLANS AND DETAILS
134-144	SOIL PLAN AND PROFILE
145-149A	DISTRICT 1 DETAILS
150	LCDOT DETAILS
151	FAA RESTRICTIONS
152-176	CROSS SECTION SHEETS - WADSWORTH ROAD
177-189	CROSS SECTION SHEETS - GREEN BAY ROAD

FOR LIST OF STATE STANDARDS, SEE SHEET 2

M.O.T. LIMITS

WADSWORTH ROAD: 140+76.25 TO 199+20.00
 GREEN BAY ROAD: 196+27.20 TO 232+00.66

STATE OF ILLINOIS
 DEPARTMENT OF TRANSPORTATION
 DIVISION OF HIGHWAYS

PLANS FOR PROPOSED FEDERAL AID HIGHWAY

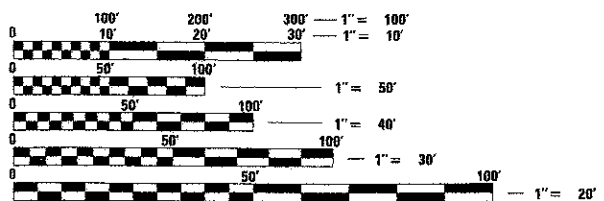
FAU ROUTE 1209 (WADSWORTH ROAD - CH 17) AT
 FAU ROUTE 2711 (GREEN BAY ROAD - IL ROUTE 131)
 INTERSECTION IMPROVEMENT
 SECTION 03-00033-12-CH
 PROJECT NO. RS-0097(035)
 LAKE COUNTY
 JOB NO. C-91-207-04



DESIGN DESIGNATION WADSWORTH ROAD: MINOR ARTERIAL (45 M.P.H.)
 DESIGN DESIGNATION GREEN BAY ROAD: MINOR ARTERIAL (45 M.P.H.)

TRAFFIC DATA:

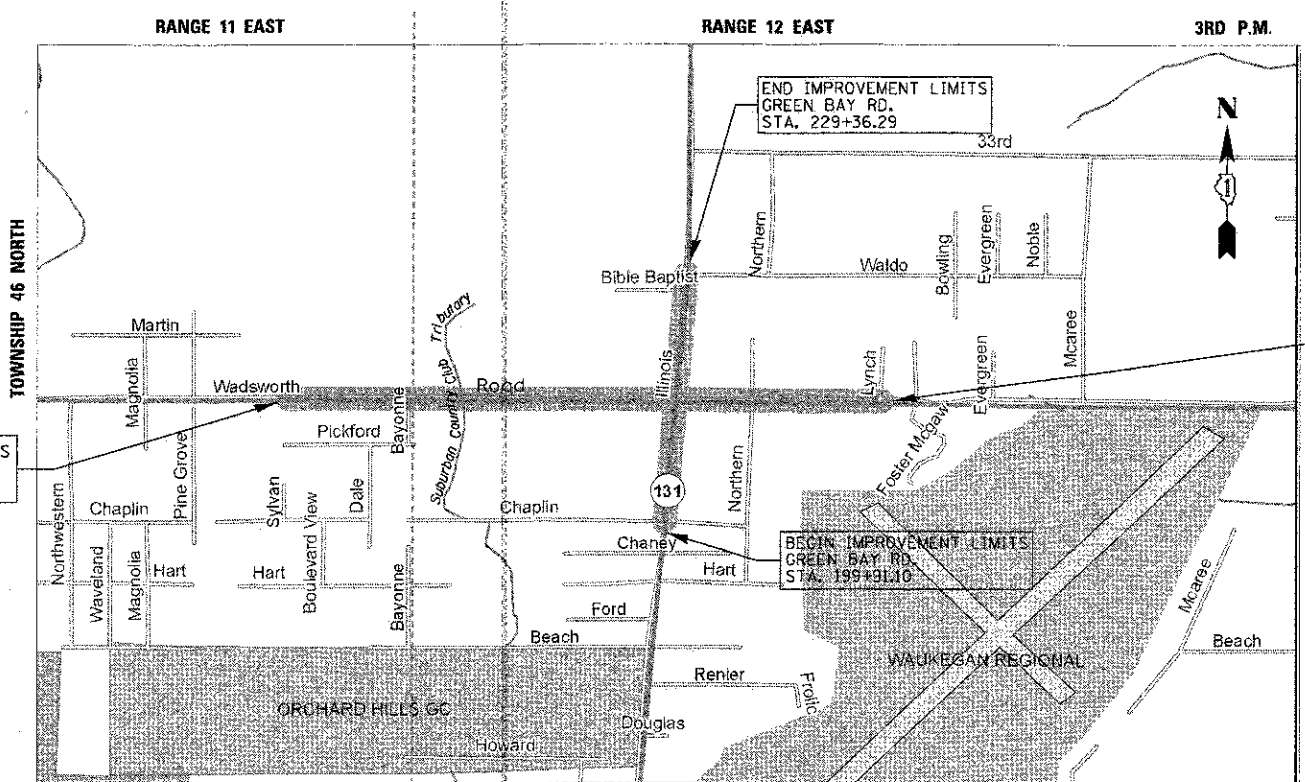
	2007	2030
NORTHBOUND ADT =	17,000	24,000
SOUTHBOUND ADT =	18,500	26,000
EASTBOUND ADT =	14,750	23,000
WESTBOUND ADT =	13,000	21,000



FULL SIZE PLANS HAVE BEEN PREPARED USING STANDARD ENGINEERING SCALES. REDUCED SIZED PLANS WILL NOT CONFORM TO STANDARD SCALES. IN MAKING MEASUREMENTS ON REDUCED PLANS, THE ABOVE SCALES MAY BE USED.

J.U.L.I.E.
 JOINT UTILITY LOCATION INFORMATION FOR EXCAVATION
 1-800-892-0123 OR 811
 TOWNSHIP 46 NORTH, RANGE 11 & 12 EAST,
 SECTIONS 25, 30, 31, & 36

CONTRACT NO. 63766



LOCATION MAP (NOT TO SCALE)
 GROSS LENGTH = 9,463 FT. (1.79 MI.) NET LENGTH = 8,095 FT. (1.53 MI.)

END IMPROVEMENT LIMITS
 WADSWORTH RD.
 STA. 195+98.95

PROJECT IS LOCATED IN THE VILLAGE
 OF BEACH PARK

STATE OF ILLINOIS
 DEPARTMENT OF TRANSPORTATION
 DIVISION OF HIGHWAYS

APPROVED: Oct 19, 2012
Paula T...
 LAKE COUNTY DIVISION OF TRANSPORTATION, ENGINEER

PASSED: November 13, 2012
C. J. Holt
 DISTRICT 1 ENGINEER OF LOCAL ROADS AND STREETS

RELEASED FOR BID
 BASED ON LIMITED
 REVIEW: November 14, 2012
John...
 DEPUTY DIRECTOR OF HIGHWAYS, REGION 1 ENGINEER

CBEB
 CHRISTOPHER B. BURKE ENGINEERING, LTD.
 9675 W. Higgins Road, Suite 600
 Rosemont, Illinois 60018
 (847) 823-0500



VAL M. RACICH
 ILLINOIS REGISTRATION No. 062-049622 ENGINEER
 EXPIRATION DATE: 11/30/2013

PRINTED BY THE AUTHORITY
 OF THE STATE OF ILLINOIS

ASSOCIATE PROGRAM & OFFICE ENGINEER: CHARLES F. RIDDLER, P.E. (847) 705-4406, SCHAUMBURG, IL