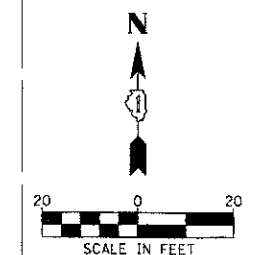
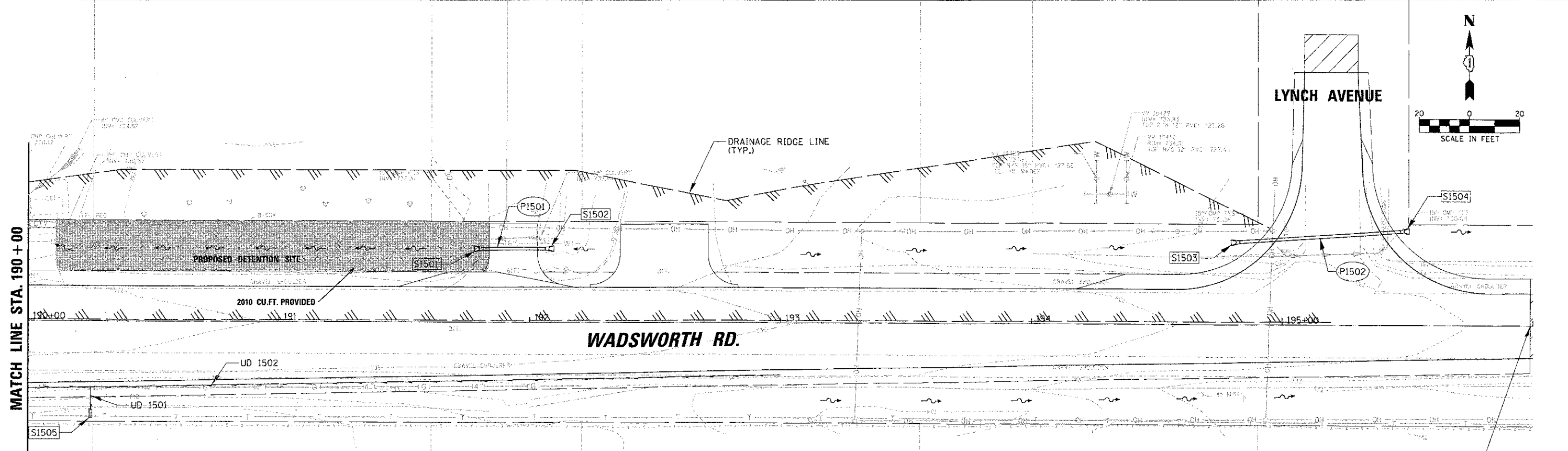


PLAN	DATE
REVISED	
NO. 1	
NO. 2	
NO. 3	
NO. 4	
NO. 5	
NO. 6	
NO. 7	
NO. 8	
NO. 9	
NO. 10	

PROJECT	DATE
NO. 1	
NO. 2	
NO. 3	
NO. 4	
NO. 5	
NO. 6	
NO. 7	
NO. 8	
NO. 9	
NO. 10	

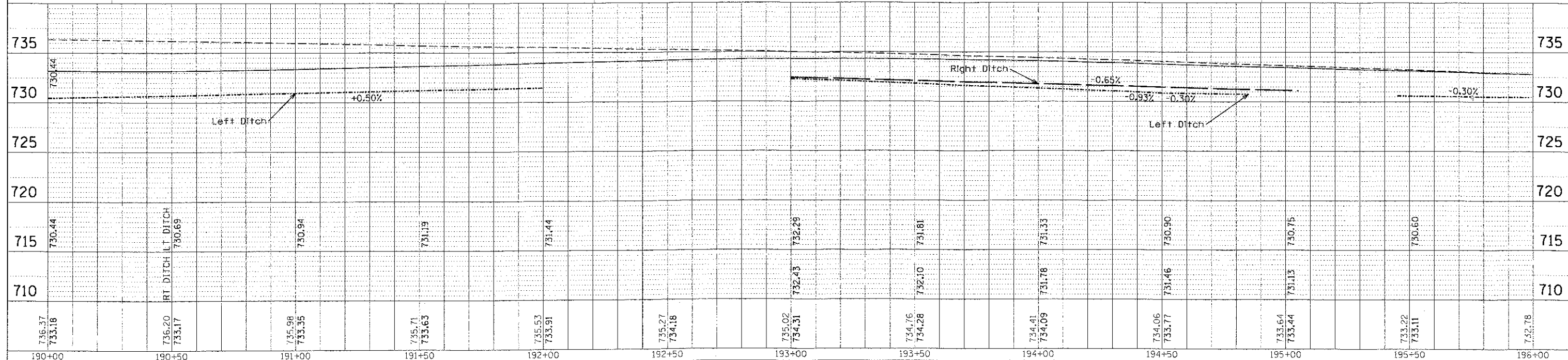


NOTE:

A TOTAL OF 3065 CU.FT. OF DETENTION IS PROVIDED IN THE NORTH EAST DITCH ON WADSWORTH ROAD WEST OF THE CULVERT AT STATION 189+85. †

A TOTAL OF 2010 CU.FT. OF DETENTION IS PROVIDED IN THE NORTH EAST DITCH ON WADSWORTH ROAD EAST OF THE CULVERT AT STATION 189+85.

THE TOTAL REQUIRED DETENTION VOLUME IS 4747 CU.FT.



FILE NAME: N:\C001\64229\Drawings\FN(1)N_03.SHP	USER NAME: mmarz	DESIGNED: -	REVISED: -	STATE OF ILLINOIS DEPARTMENT OF TRANSPORTATION	WADSWORTH ROAD NORTH EAST DITCH DETENTION STORAGE SITE			F.A.U. RTE. 1209	SECTION 03-00033-12-CH	COUNTY LAKE	TOTAL SHEETS 189	SHEET NO. 84
PLCT SCALE = 20	CHECKED: -	REVISED: -	REVISED: -		SCALE: -	SHEET NO. -	OF SHEETS -	STA. -	TO STA. -	CONTRACT NO. 63766		
PLCT DATE = 11/13/2012	DATE: -	REVISED: -	REVISED: -		FED. ROAD DIST. NO. 1 ILLINOIS FED. AID PROJECT							