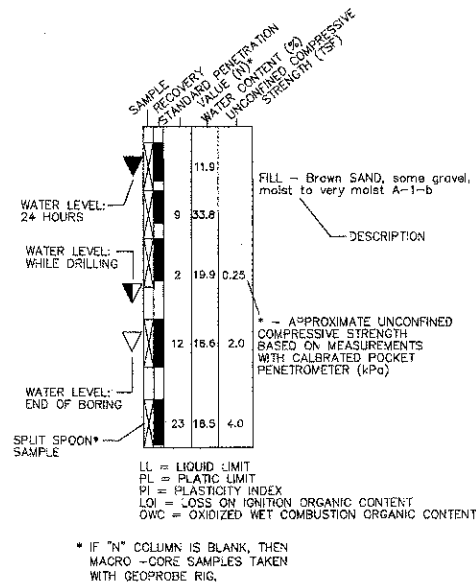
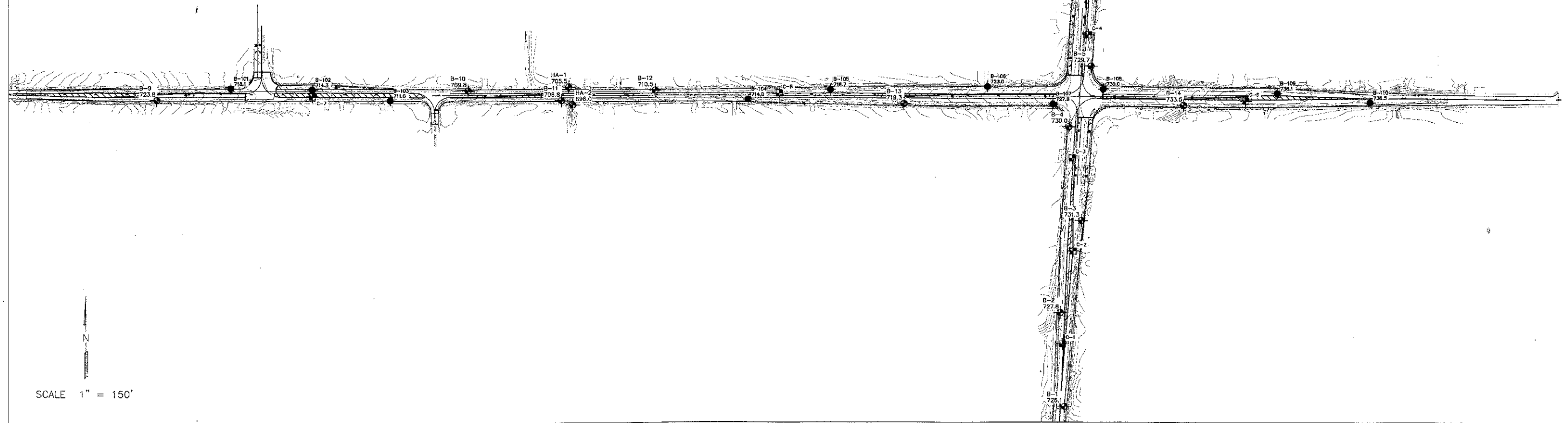
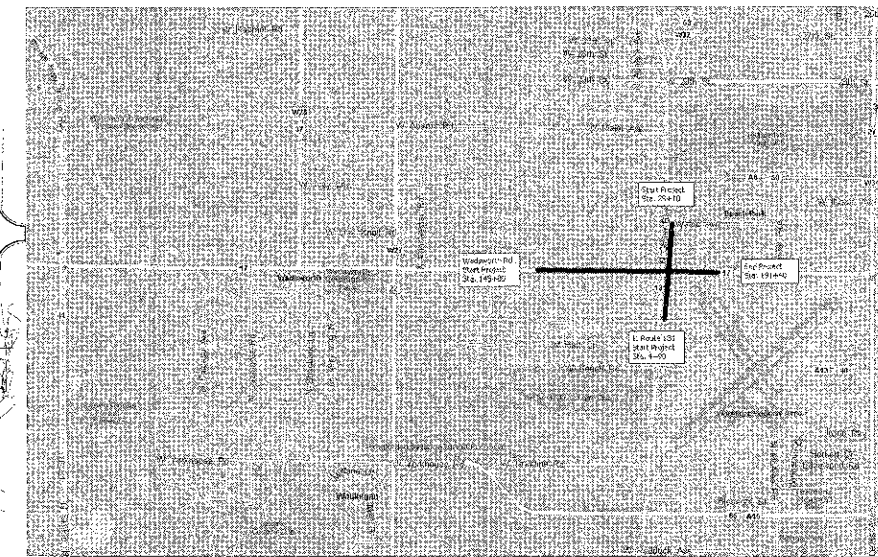


TESTING SERVICE CORPORATION  
 PLAN AND PROFILE SHEETS  
 BORING LEGEND



# STATE OF ILLINOIS COUNTY OF LAKE PLANS FOR PROPOSED WADSWORTH ROAD FROM STA. 145+80 TO STA. 191+48 & IL ROUTE 131 FROM STA. 4+90 TO STA. 25+10

## PROJECT LOCATION



SCALE 1" = 150'

**LEGEND**

- BORING LOCATIONS  
L-62,012 / JULY 2005
- CORE LOCATIONS  
L-62,012A / MARCH 2009
- CORE LOCATIONS  
L-62,012 JULY 2005

**BORING LOCATION PLAN  
 WADSWORTH & GREEN BAY ROADS  
 ILLINOIS ROUTE 131  
 LAKE COUNTY, ILLINOIS**



TESTING SERVICE CORPORATION  
 457 EAST GUNDERSEN DRIVE  
 CAROL STREAM, ILLINOIS 60188

DRAWN BY: TRP	PAGE NO.
CHECKED BY: MVM	1 OF 11
JOB NO.: L-62,012A	
DATE: 06-15-09	

FILE NAME: A:\PROJECTS\229\Civil\SP\_042229\_21.SHT  
 USER NAME: rtrp01  
 PLOT SCALE: 1"  
 PLOT DATE: 11/13/2012

DESIGNED -  
 DRAWN -  
 CHECKED -  
 DATE -

REVISED -  
 REVISED -  
 REVISED -  
 REVISED -

**STATE OF ILLINOIS  
 DEPARTMENT OF TRANSPORTATION**

**WADSWORTH ROAD AT GREEN BAY ROAD**

SCALE: SHEET NO. OF SHEETS STA. TO STA.

F.A.U. RTE.	SECTION	COUNTY	TOTAL SHEETS	SHEET NO.
1209	03-00033-12-CH	LAKE	189	134
CONTRACT NO. <b>63766</b>				
FED. ROAD DIST. NO. 1 [ILLINOIS] FED. AID PROJECT				