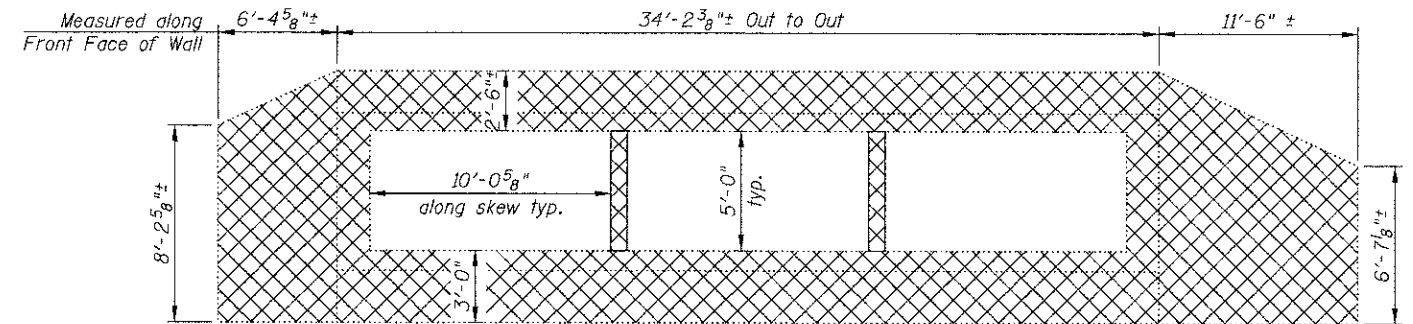
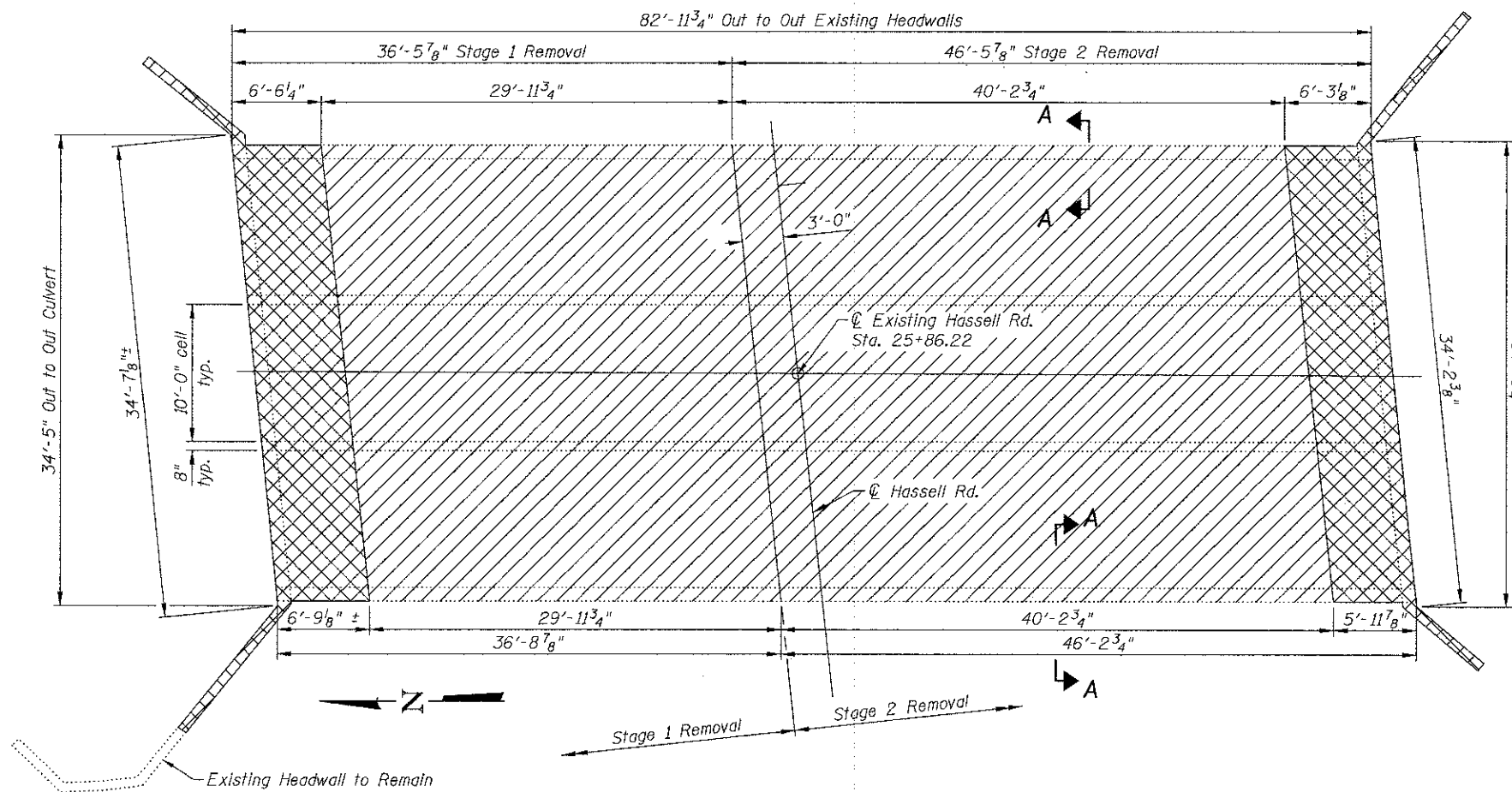


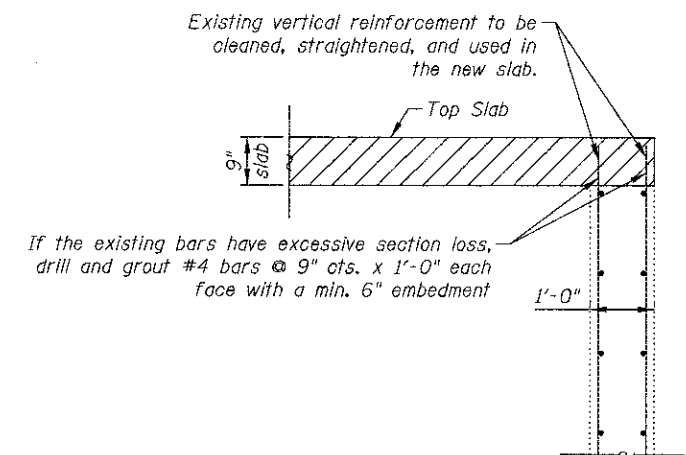
NORTH END SECTION



SOUTH END SECTION



REMOVAL PLAN



SECTION A-A

LEGEND

- Top Slab Removal
- Complete Removal of Structure

BILL OF MATERIAL

Item	Unit	Quantity
Concrete Removal	Cu. Yd.	114.8

J:\244\wood\016-6328\03-Conc. RemovalDetails.dgn
 11/31/12 10:05 AM
 mfl 12/12/2012

450 E Devon Ave, Suite 300
 Itasca, Illinois 60143
 Tel: 630.773.3900 Fax: 630.773.3975
 www.civiltechinc.com

DRAWN	- K. BOCHNOWSKI	REVISED	-
DESIGNED	- M. LANGE	REVISED	-
CHECKED	- G. HATLESTAD	REVISED	-
DATE	- DECEMBER 17, 2012	REVISED	-

STATE OF ILLINOIS
DEPARTMENT OF TRANSPORTATION

CONCRETE REMOVAL DETAILS
HASSELL ROAD OVER POPLAR CREEK
STRUCTURE NO. 016-6328
 SHEET NO. CA3 OF CA9 SHEETS

F.A.U. RTE.	SECTION	COUNTY	TOTAL SHEETS	SHEET NO.
1100	11-00087-00-FP	COOK	164	101
CONTRACT NO. 63770				
ILLINOIS FED. AID PROJECT CMM 9003(757)				