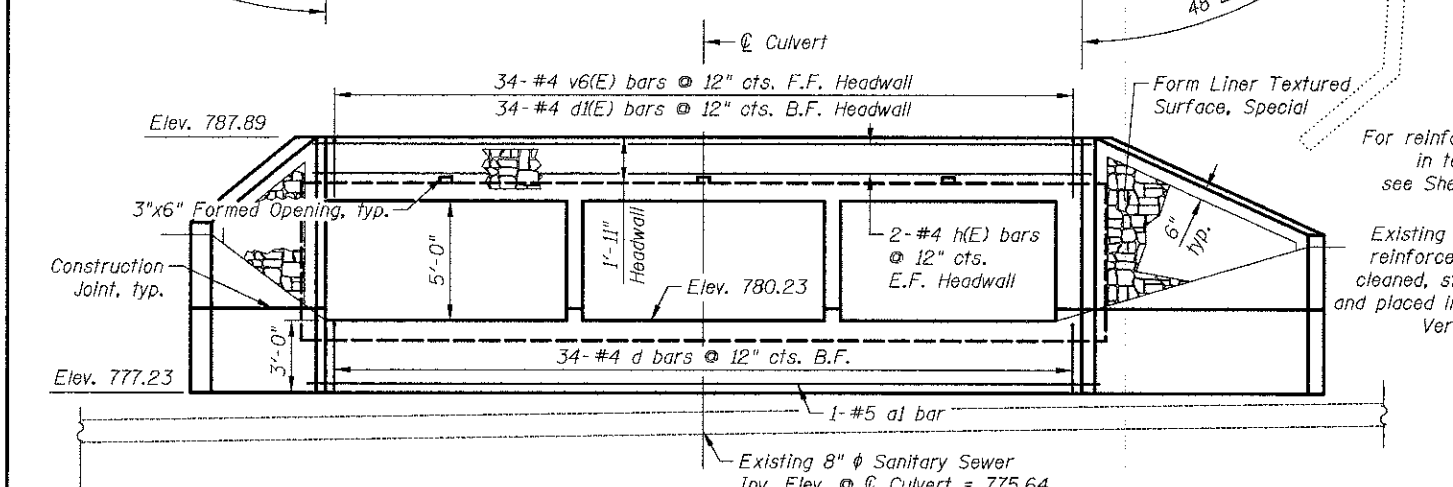
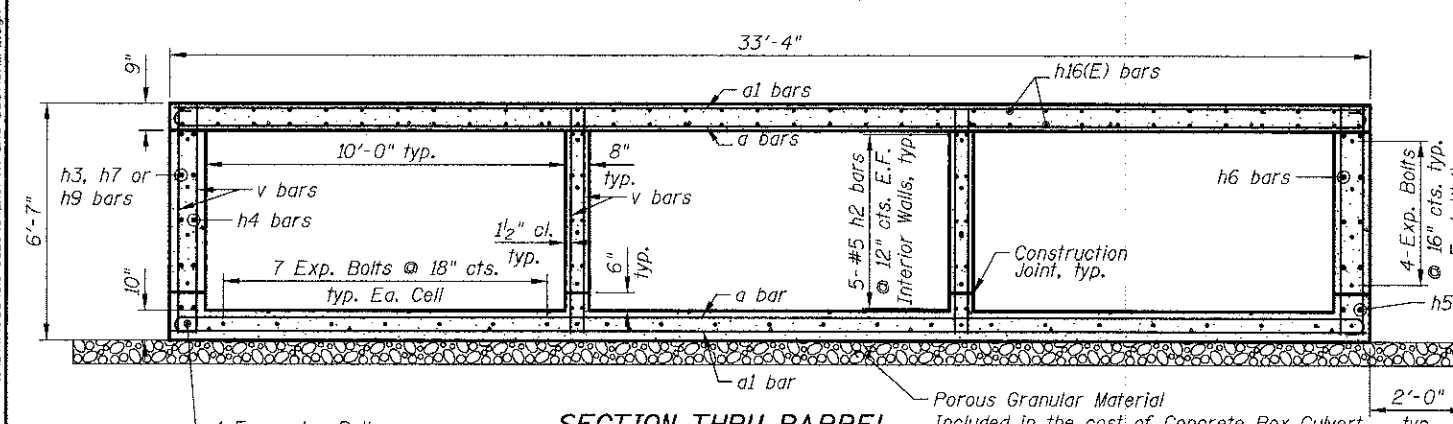


PARTIAL PLAN

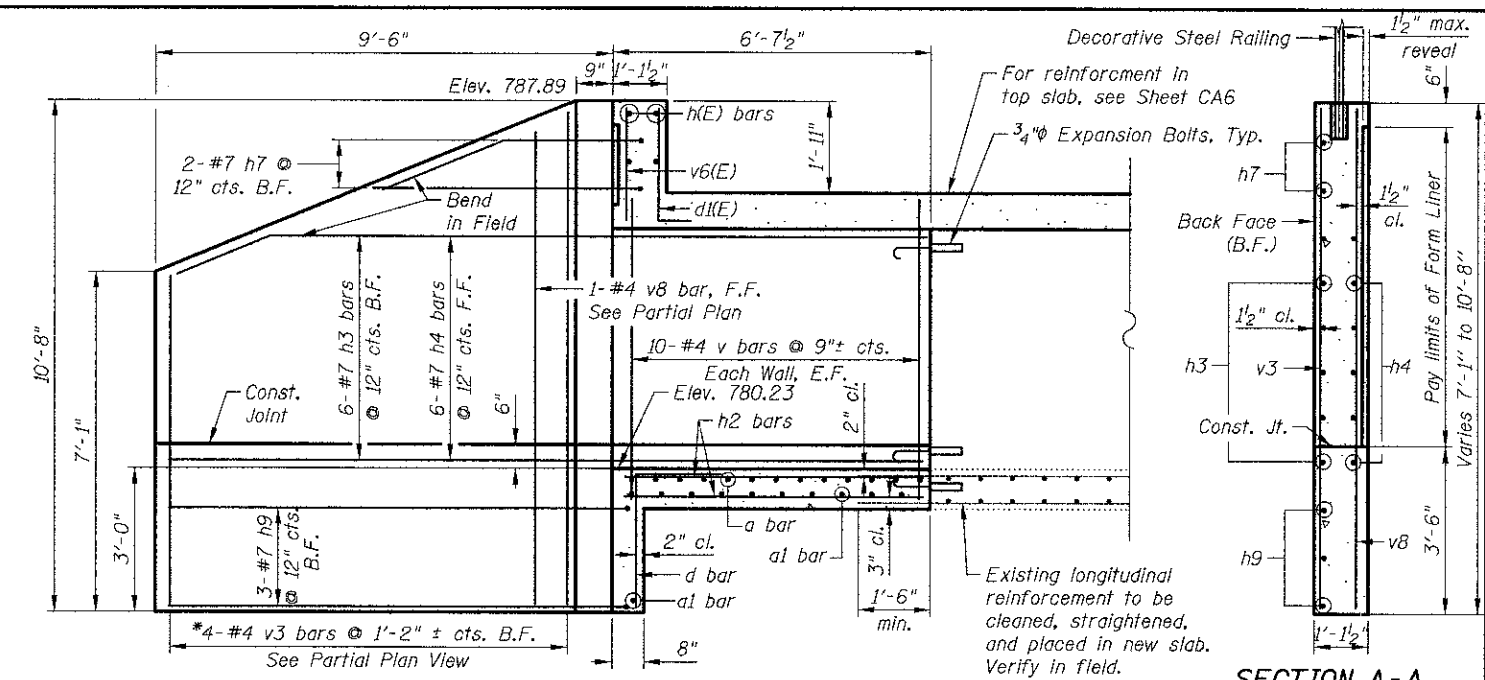


END VIEW - ELEVATION



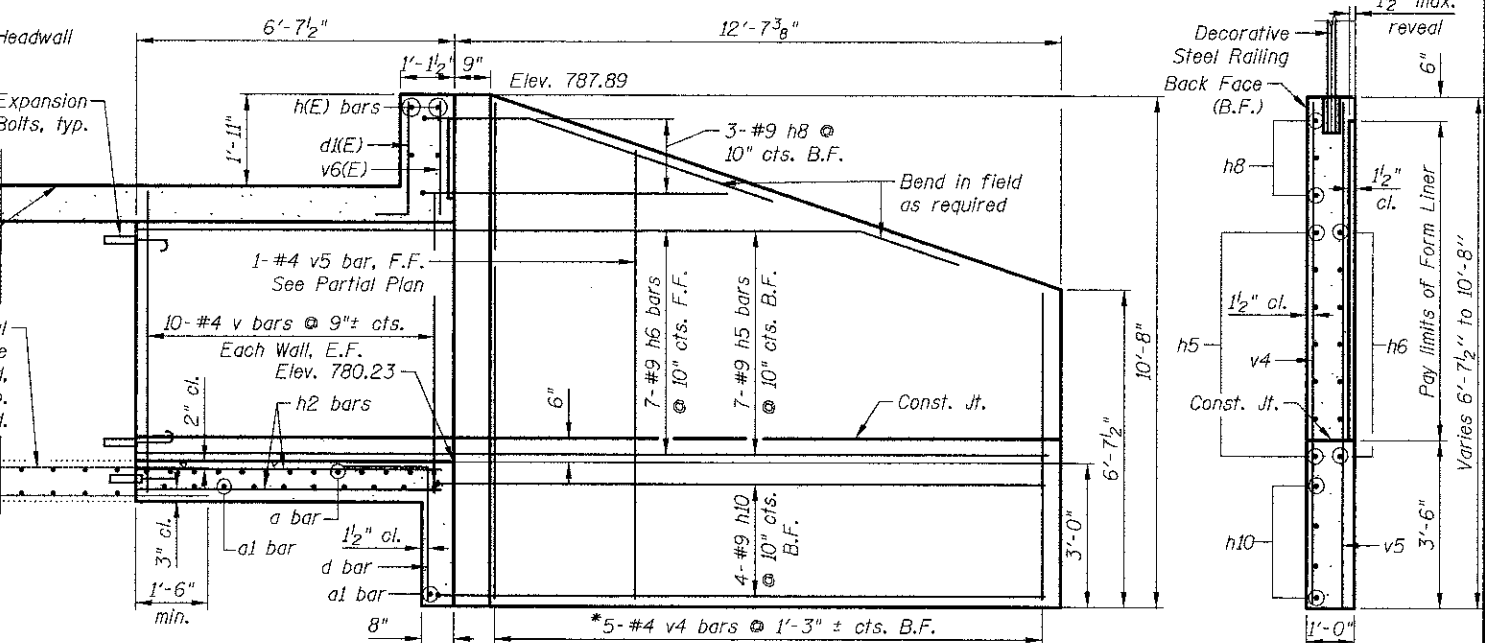
SECTION THRU BARREL

Expansion Bolts shall be 3/4 inch diameter hooked bolts. Hooked bolts shall extend a minimum of 9 inches into new concrete.



NORTHEAST WINGWALL

* See Field Cutting Diagram on sheet CA6



NORTHWEST WINGWALL

* See Field Cutting Diagram on sheet CA6

SECTION A-A

SECTION B-B

11/31/07 AM J:\244\cadd\016-622B\04_North_End_Section.r2.dgn

CIVILTECH
 450 E Devon Ave, Suite 300
 Itasca, Illinois 60143
 Tel 630.773.3900 Fax: 630.773.3975
 www.civiltechinc.com

| | |
|--------------------------|-----------|
| DRAWN - K. BOCHNOWSKI | REVISED - |
| DESIGNED - M. LANGE | REVISED - |
| CHECKED - G. HATLESTAD | REVISED - |
| DATE - DECEMBER 17, 2012 | REVISED - |

**STATE OF ILLINOIS
 DEPARTMENT OF TRANSPORTATION**

**NORTH END SECTION
 HASSELL ROAD OVER POPLAR CREEK
 STRUCTURE NO. 016-6328**

| | | | | |
|--------------------|------------------------|-------------|------------------|---------------|
| F.A.J. RTE. 1100 | SECTION 11-00087-00-FP | COUNTY COOK | TOTAL SHEETS 164 | SHEET NO. 102 |
| CONTRACT NO. 63770 | | | | |

ILLINOIS FED. AID PROJECT CMM 9003(757)