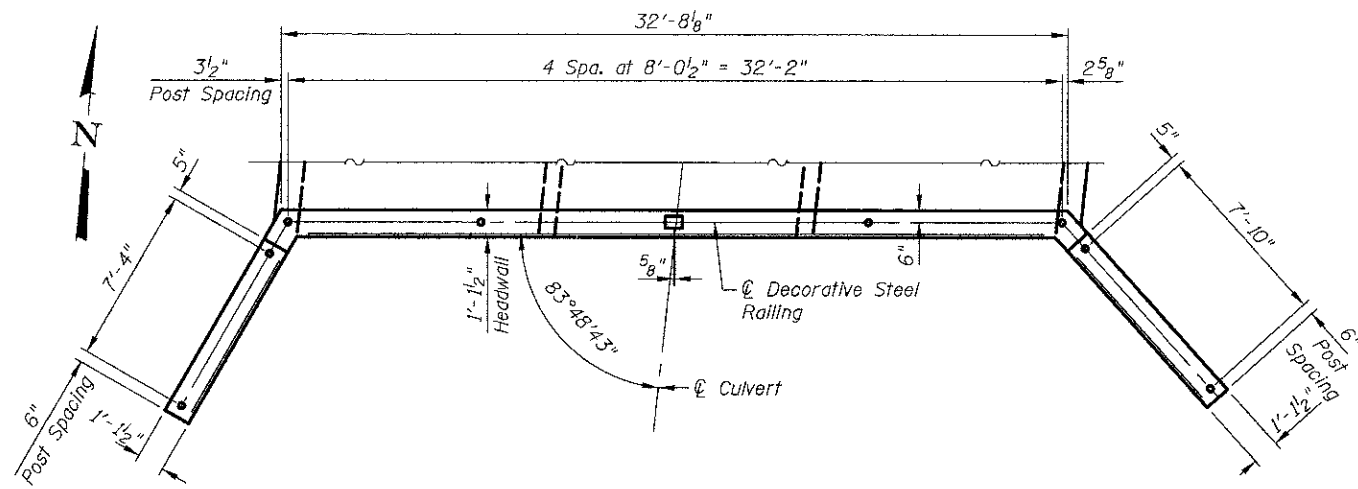
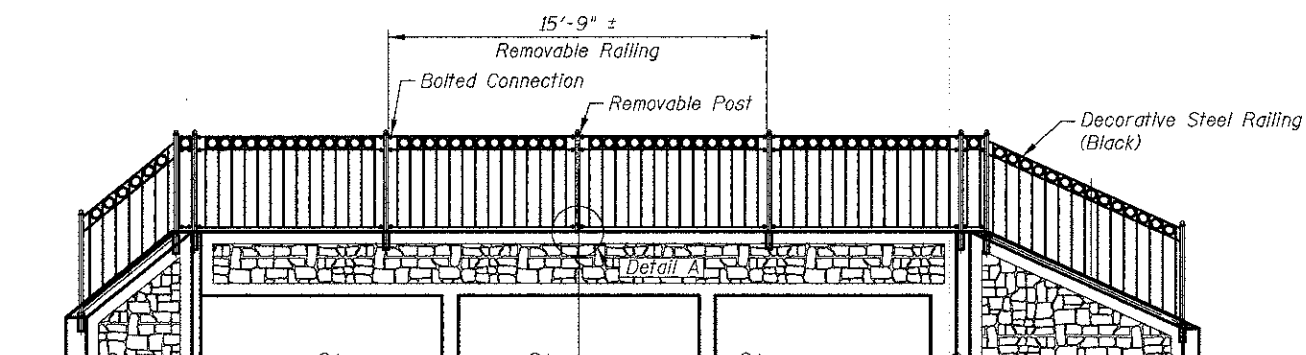


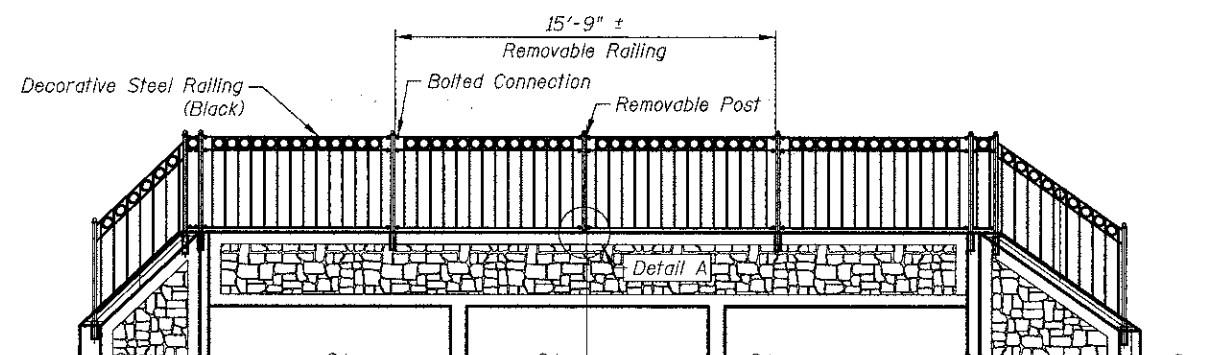
**NORTH END PARTIAL PLAN**



**SOUTH END PARTIAL PLAN**



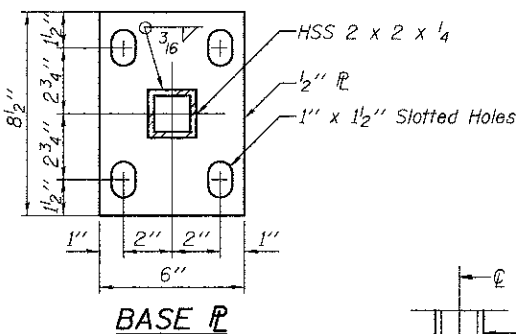
**NORTH END VIEW - ELEVATION**



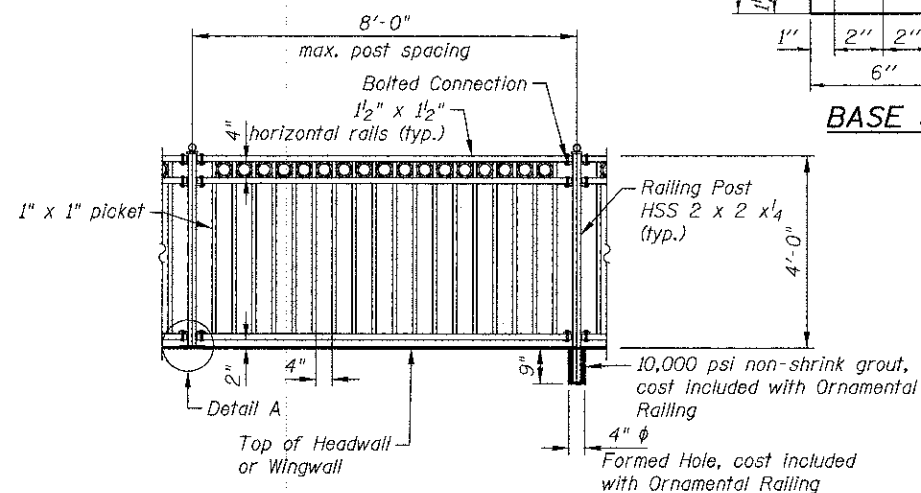
**SOUTH END VIEW - ELEVATION**

**BILL OF MATERIAL**

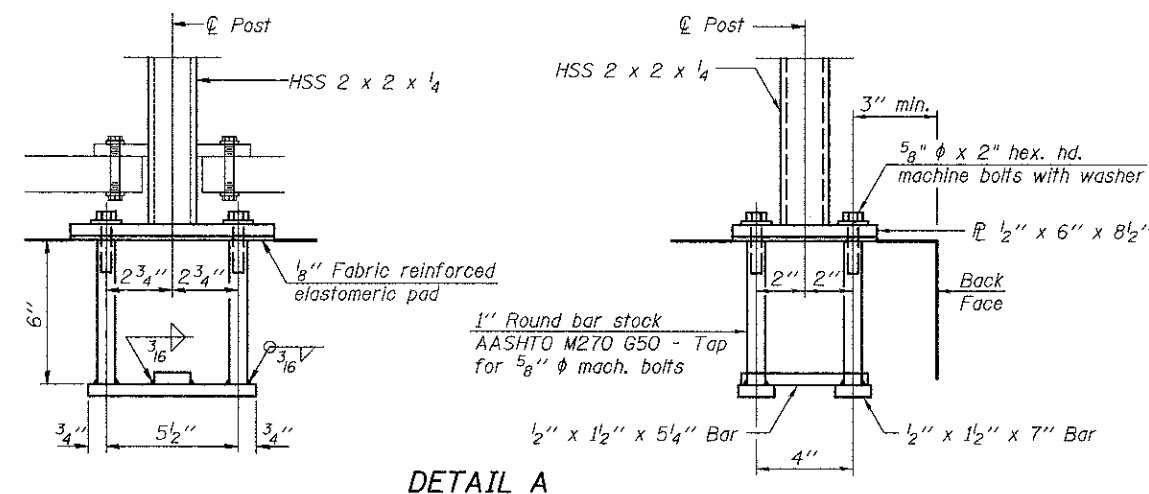
Item	Unit	Quantity
Decorative Steel Railing	Foot	105



**BASE R**



**TYPICAL RAILING ELEVATION**



**DETAIL A**

12/12/2012 10:31:44 AM J:\244\ncad\016-6328\07\_Railing\_Details.dgn



450 E Devon Ave, Suite 300  
Itasca, Illinois 60143  
Tel 630.773.3900 Fax: 630.773.3975  
www.civiltechinc.com

DRAWN - K. BOCHNOWSKI  
DESIGNED - M. LANGE  
CHECKED - G. HATLESTAD  
DATE - DECEMBER 17, 2012

REVISED -  
REVISED -  
REVISED -  
REVISED -

**STATE OF ILLINOIS  
DEPARTMENT OF TRANSPORTATION**

**DECORATIVE STEEL RAILING DETAILS  
HASSELL ROAD OVER POPLAR CREEK  
STRUCTURE NO. 016-6328**

SHEET NO. CA7 OF CA9 SHEETS

F.A.U. RTE.	SECTION	COUNTY	TOTAL SHEETS	SHEET NO.
1100	11-00087-00-FP	COOK	164	105
				CONTRACT NO. 63770
ILLINOIS FED. AID PROJECT CMM 9003(757)				