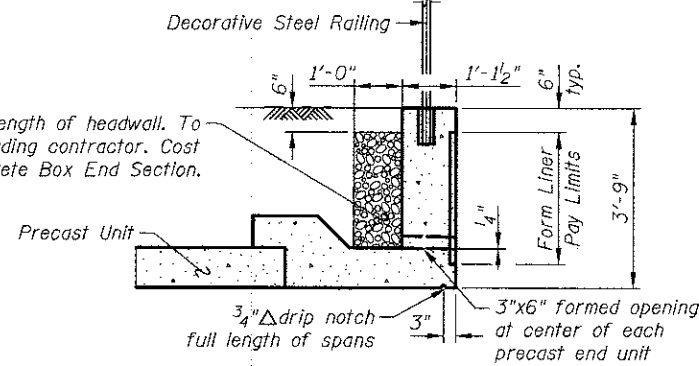
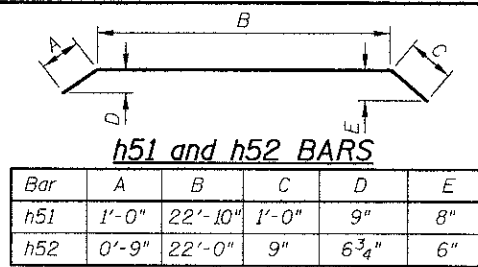


OPENING IN PRECAST CELLS

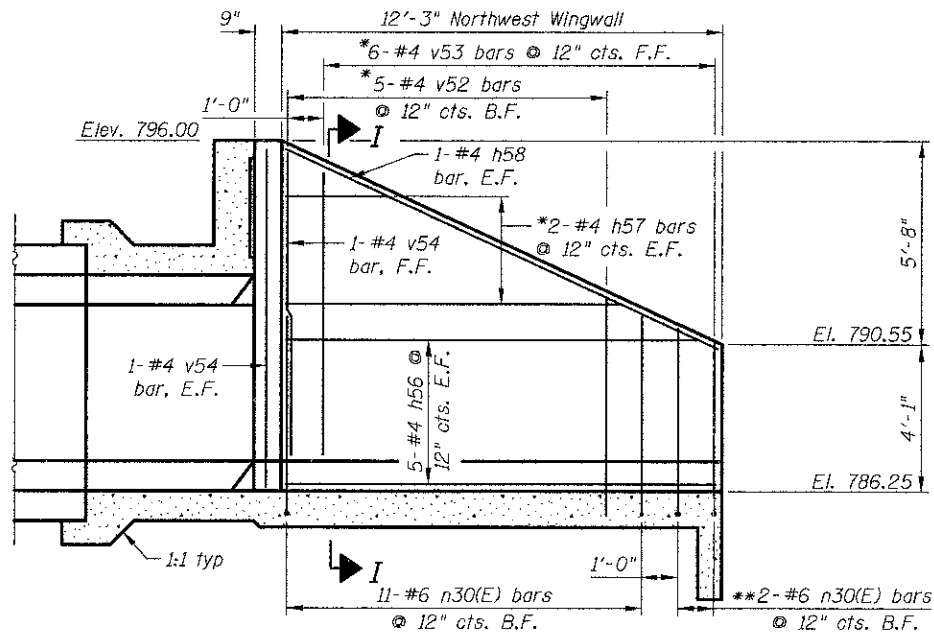


SECTION THRU HEADWALL
(Downstream end)

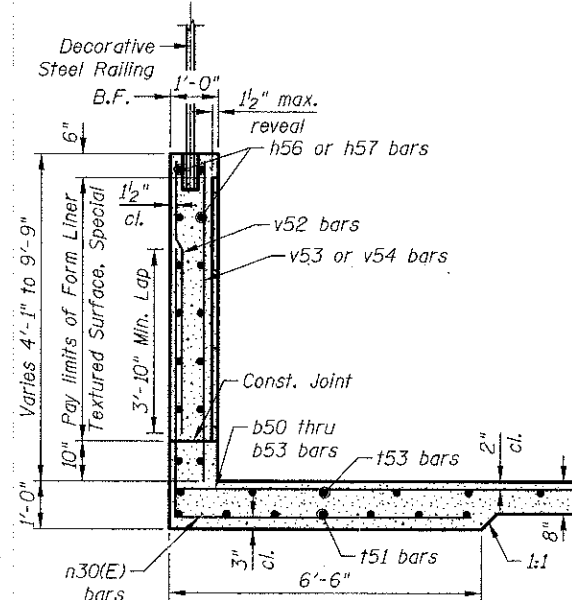


90 DEGREE BEND BARS

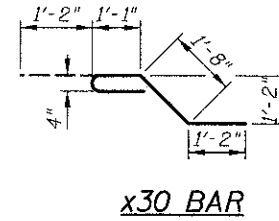
Bar	A	B
d30	1'-9"	2'-9"
d50	3'-5"	0'-8"
n30(E)	6'-1"	5'-7"
x31	13'-2"	5'-3"



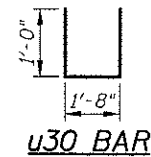
NORTHWEST WINGWALL
(Decorative Steel Railing Not Shown)



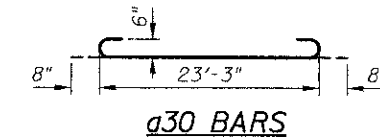
SECTION I-I



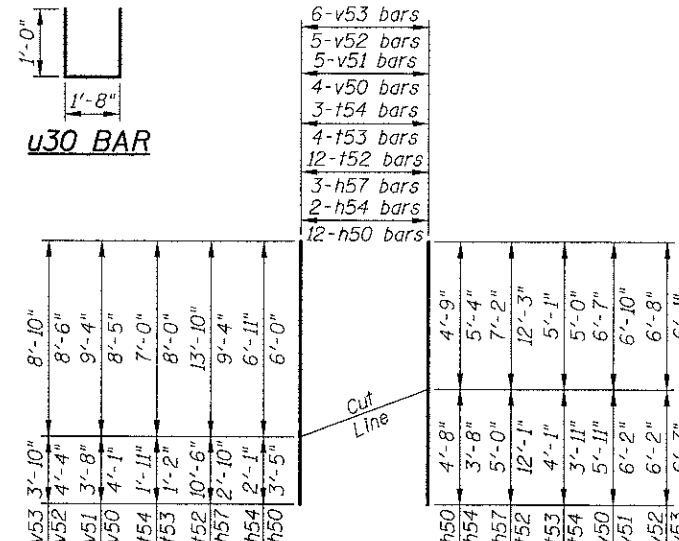
x30 BAR



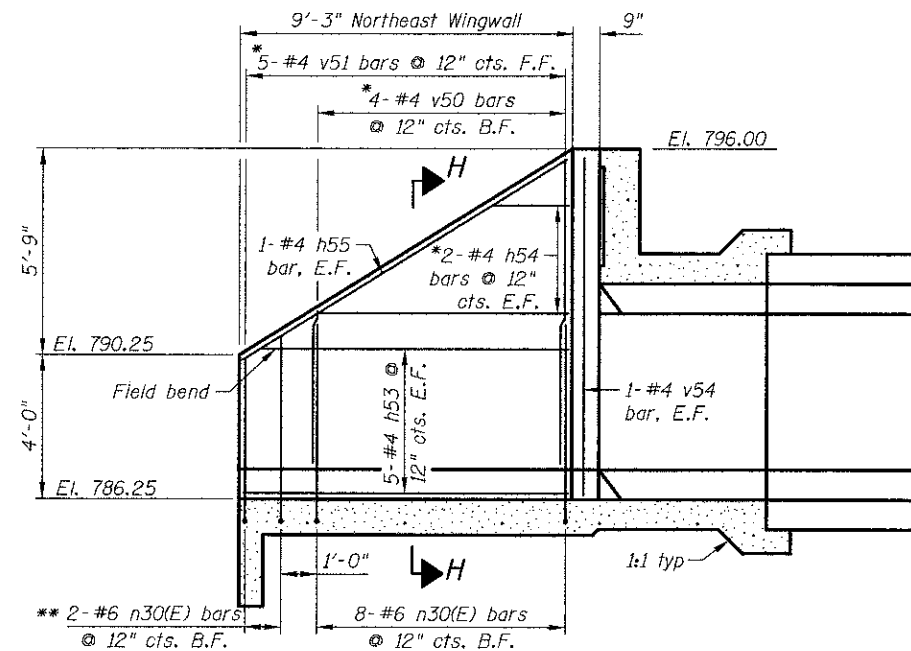
u30 BAR



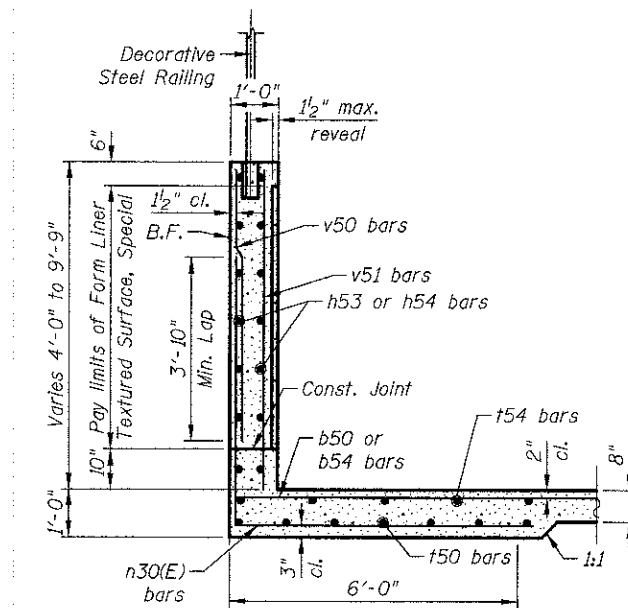
a30 BARS



FIELD CUTTING DIAGRAM



NORTHEAST WINGWALL
(Decorative Steel Railing Not Shown)



SECTION H-H

h59 THRU h62 BARS

Bar	A	B	C
h59	3'-0"	7"	5 1/4"
h60	2'-5"	7"	5 1/4"
h61	5'-4"	6"	4"
h62	4'-11"	8"	5 3/8"

BILL OF MATERIAL

Item	Unit	Quantity
Box Culvert End Section, Culvert No. 1	Each	1
Form Liner Textured Surface, Special	Sq. Ft.	166

FOR INFORMATION ONLY

Bar	No.	Size	Length	Shape
a30	22	#6	24'-7"	C
a31	22	#6	23'-3"	—
b50	7	#4	18'-0"	—
b51	1	#4	27'-9"	—
b52	1	#4	25'-7"	—
b53	2	#4	20'-5"	—
d30	38	#4	4'-6"	L
d50	24	#5	4'-1"	L
h50	43	#5	8'-1"	—
h51	3	#4	24'-10"	—
h52	3	#4	23'-6"	—
h53	10	#4	8'-11"	—
h54	4	#4	9'-0"	—
h55	2	#4	10'-6"	—
h56	8	#4	11'-11"	—
h57	4	#4	12'-2"	—
h58	2	#4	13'-2"	—
h59	7	#5	3'-7"	—
h60	7	#5	3'-0"	—
h61	7	#5	6'-1"	—
h62	7	#5	5'-7"	—
n30(E)	23	#6	11'-8"	—
t50	7	#5	8'-11"	—
t51	7	#5	11'-11"	—
t52	12	#4	24'-4"	—
t53	4	#4	9'-2"	—
t54	3	#4	8'-11"	—
u30	7	#4	3'-8"	U
v35	34	#5	7'-4"	—
v50	4	#4	12'-6"	—
v51	5	#4	13'-0"	—
v52	5	#4	12'-10"	—
v53	6	#4	12'-8"	—
v54	5	#4	9'-4"	—
v55	24	#4	3'-5"	—
x30	70	#4	5'-1"	—
x31	12	#4	18'-5"	—
Item	Unit	Quantity		
Concrete Structures	Cu. Yd.	33.1		
Reinforcement Bars	Pound	4,060		
Reinforcement Bars, Epoxy Coated	Pound	410		

Notes:
Quantity of concrete structures and reinforcement bars is shown for information only. The cost is included in Box Culvert End Section, Culvert No. 1.
* See Field Cutting Diagram
** Cut to fit as required

J:\244\road\016-634\05_End Section 2_Details_north.dgn
 11/3/15 AM
 2/2/2012



450 E Devon Ave, Suite 300
Itasca, Illinois 60143
Tel: 630.773.3900 Fax: 630.773.3975
www.civiltechinc.com

DRAWN	- M. LANGE	REVISED	-
DESIGNED	- D. ATKINS	REVISED	-
CHECKED	- G. HATLESTAD	REVISED	-
DATE	- DECEMBER 17, 2012	REVISED	-

STATE OF ILLINOIS
DEPARTMENT OF TRANSPORTATION

NORTH END SECTION DETAILS
HASSELL ROAD OVER POPLAR CREEK
STRUCTURE NO. 016-6344

SHEET NO. CB5 OF CB7 SHEETS

F.A.I. RTE.	SECTION	COUNTY	TOTAL SHEETS	SHEET NO.
1100	11-00087-00-FP	COOK	164	112

CONTRACT NO. 63770
ILLINOIS FED. AID PROJECT CMM 9003(157)