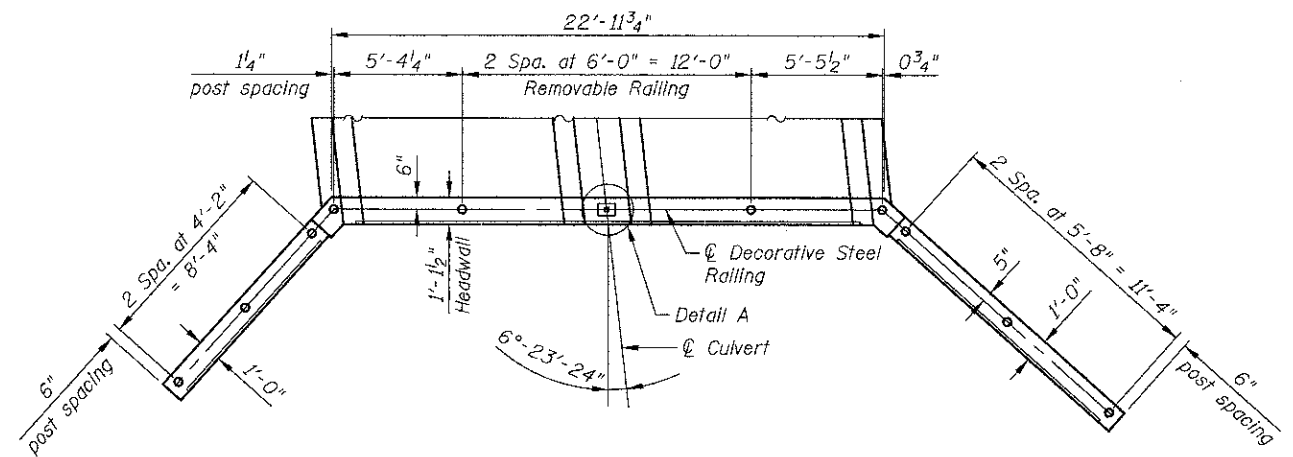
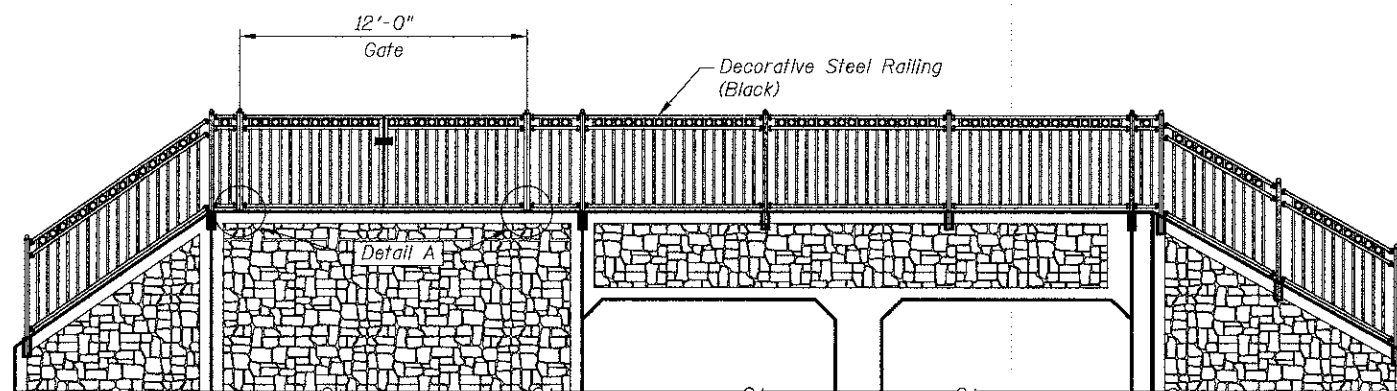


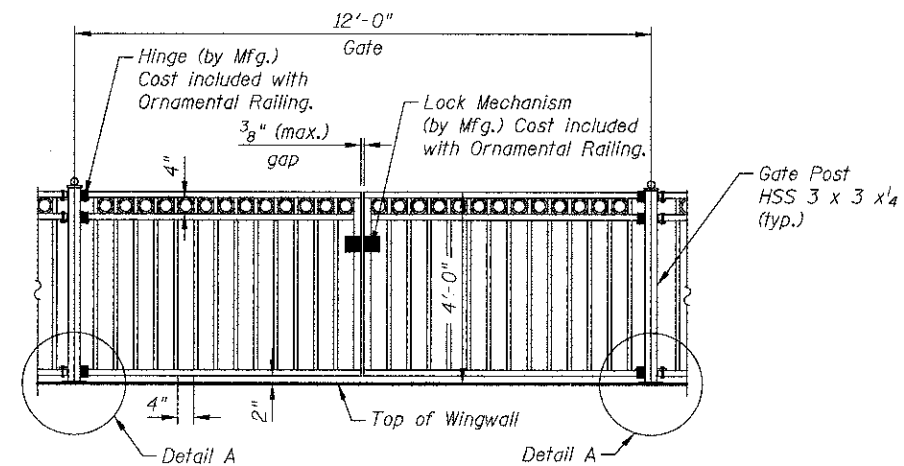
**SOUTH END PARTIAL PLAN**



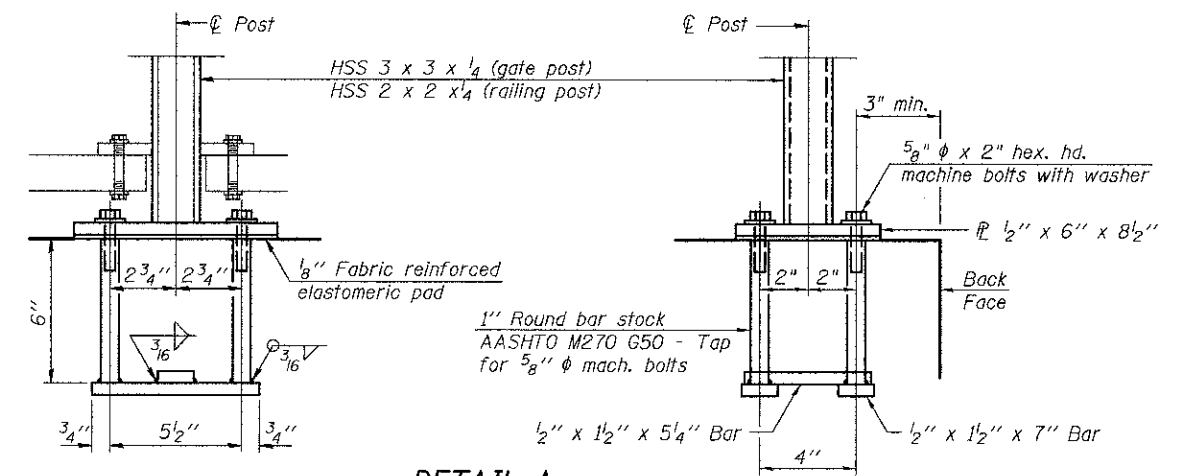
**NORTH END PARTIAL PLAN**



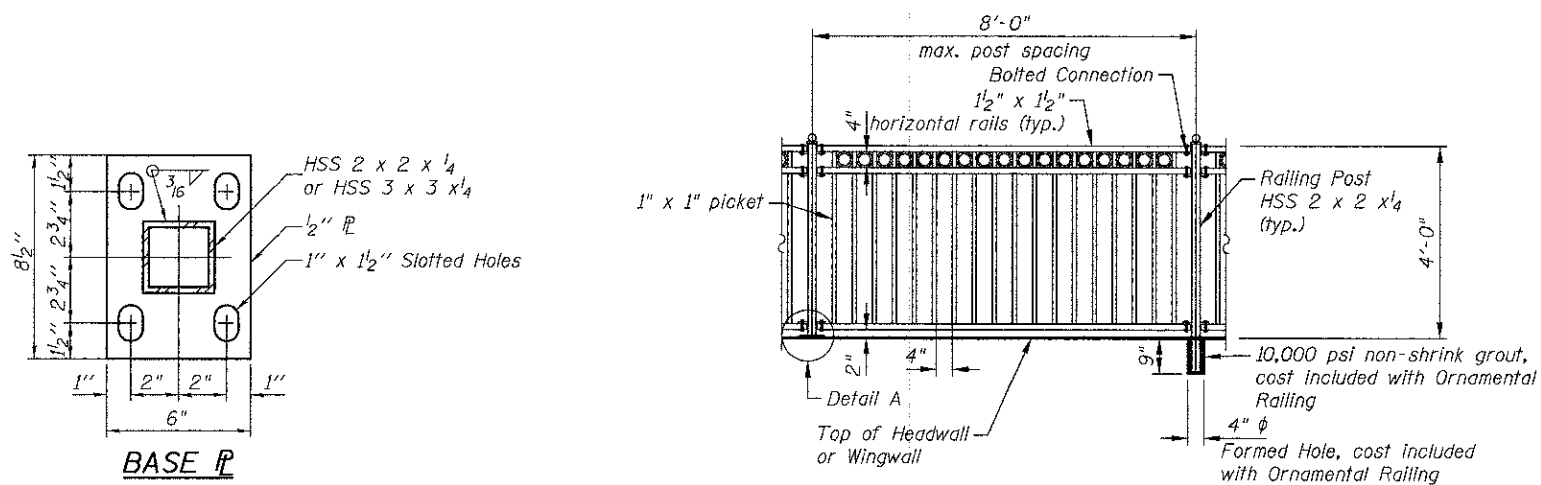
**SOUTH END VIEW - UNFOLDED ELEVATION**



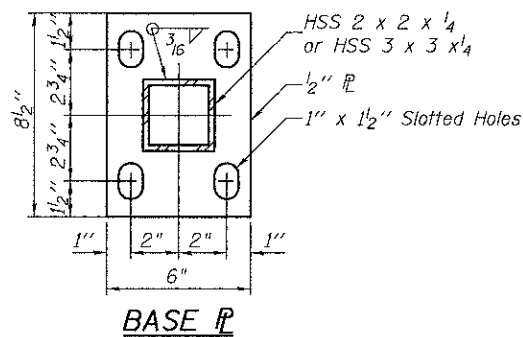
**GATE ELEVATION**



**DETAIL A**



**TYPICAL RAILING ELEVATION**



**BILL OF MATERIAL**

Item	Unit	Quantity
Decorative Steel Railing	Foot	103

12/17/2012 10:51:59 AM J:\240\cadd\016-634\A06\_Railing\_De tails.dgn



450 E Devon Ave, Suite 300  
 Itasca, Illinois 60143  
 Tel: 630.773.3900 Fax: 630.773.3975  
 www.civiltechinc.com

DRAWN - M. LANGE	REVISED -
DESIGNED - D. ATKINS	REVISED -
CHECKED - G. HATLESTAD	REVISED -
DATE - DECEMBER 17, 2012	REVISED -

**STATE OF ILLINOIS**  
**DEPARTMENT OF TRANSPORTATION**

**DECORATIVE STEEL RAILING DETAILS**  
**HASSELL ROAD OVER POPLAR CREEK**  
**STRUCTURE NO. 016-6344**

SHEET NO. CB6 OF CB7 SHEETS

F.A.L. RTE. 1100	SECTION 11-00087-00-FP	COUNTY COOK	TOTAL SHEETS 164	SHEET NO. 113
CONTRACT NO. 63770				

ILLINOIS FED. AID PROJECT CMM 6003(757)