

FOR INFORMATION ONLY

Bar	No.	Size	Length	Shape
a30	16	#6	24'-7"	┌
a31	16	#6	23'-3"	┌
d30	26	#4	4'-6"	┌
d80	25	#4	3'-2"	┌
h70	48	#5	6'-5"	┌
h75	14	#5	3'-4"	┌
h80	16	#4	7'-0"	┌
h81	32	#4	9'-0"	┌
h82	32	#4	9'-8"	┌
h83	7	#4	24'-11"	┌
h84	7	#5	3'-9"	┌
h85	7	#5	5'-0"	┌
h86	7	#5	4'-1"	┌
h87	7	#5	2'-10"	┌
n80(E)	16	#6	5'-8"	┌
n81(E)	22	#4	3'-9"	┌
t80	20	#4	6'-8"	┌
t81	58	#4	4'-2"	┌
t82	20	#5	6'-8"	┌
u30	7	#4	3'-8"	┌
v35	28	#4	7'-4"	┌
v80	32	#4	10'-0"	┌
v81	44	#4	6'-6"	┌
v82	4	#4	11'-6"	┌
v83	26	#4	2'-5"	┌
w80	32	#4	8'-8"	┌
w81	24	#4	9'-8"	┌
w82	12	#4	5'-3"	┌
w83	12	#4	4'-8"	┌
x30	70	#4	5'-1"	┌
x31	12	#4	18'-5"	┌
Item		Unit	Quantity	
Concrete Structures		Cu. Yd.	41.0	
Reinforcement Bars		Pound	4,190	
Reinforcement Bars, Epoxy Coated		Pound	200	

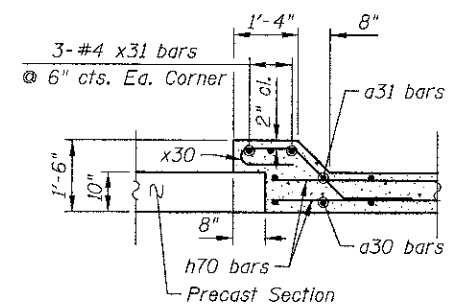
Note:
Quantity of concrete structures and reinforcement bars is shown for information only. The cost is included in Box Culvert End Section, Culvert No. 2.

BILL OF MATERIAL

Item	Unit	Quantity
Porous Granular Backfill	Cu. Yd.	19
Box Culvert End Section, Culvert No. 2	Ea.	1
Form Liner Textured Surface, Special	Sq. Ft.	185

F.A.U. RTE.	SECTION	COUNTY	TOTAL SHEETS	SHEET NO.
1100	11-00087-00-FP	COOK	164	119

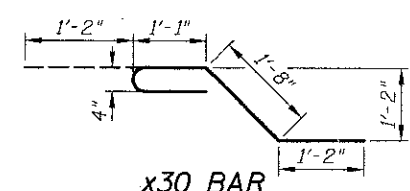
CONTRACT NO. 63770
ILLINOIS FED. AID PROJECT CMM 90031757



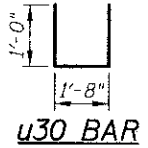
DETAIL "A"

90 DEGREE BEND BARS

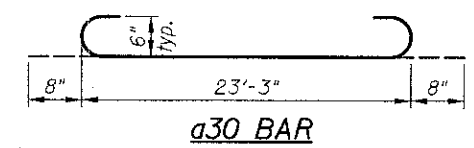
Bar	A	B
d30	2'-9"	1'-9"
d80	2'-6"	8"
x31	5'-3"	13'-2"



x30 BAR



u30 BAR



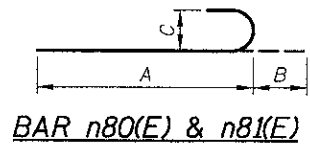
a30 BAR

h84 & h85 BARS

Bar	A	B	C
h84	10"	2'-11"	13/8"
h85	1'-5"	3'-7"	15/8"

h86 & h87 BARS

Bar	A	B	C
h86	1'-4"	2'-9"	1 1/4"
h87	10"	2'-0"	7/8"

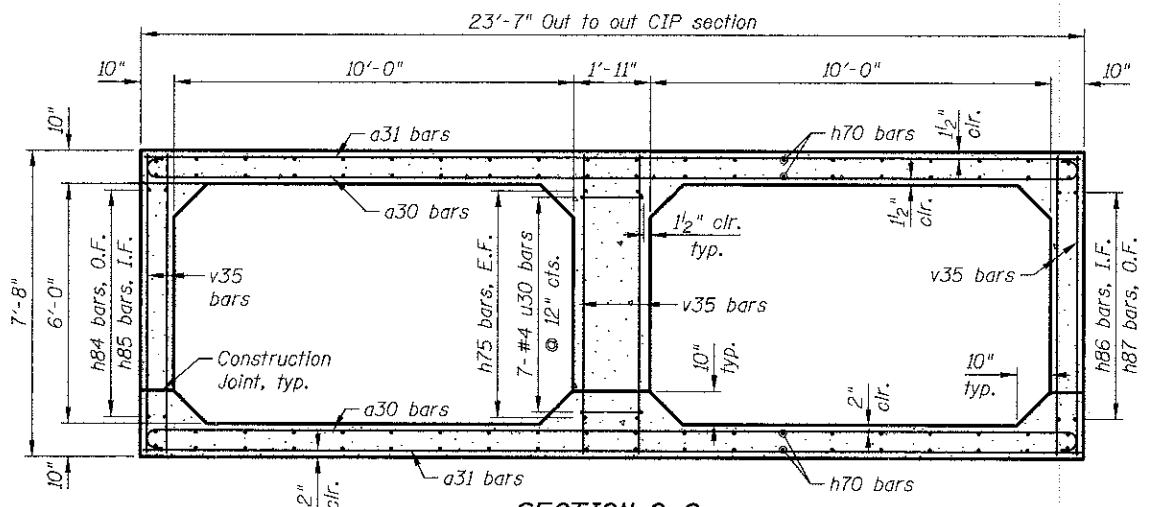


BAR n80(E) & n81(E)

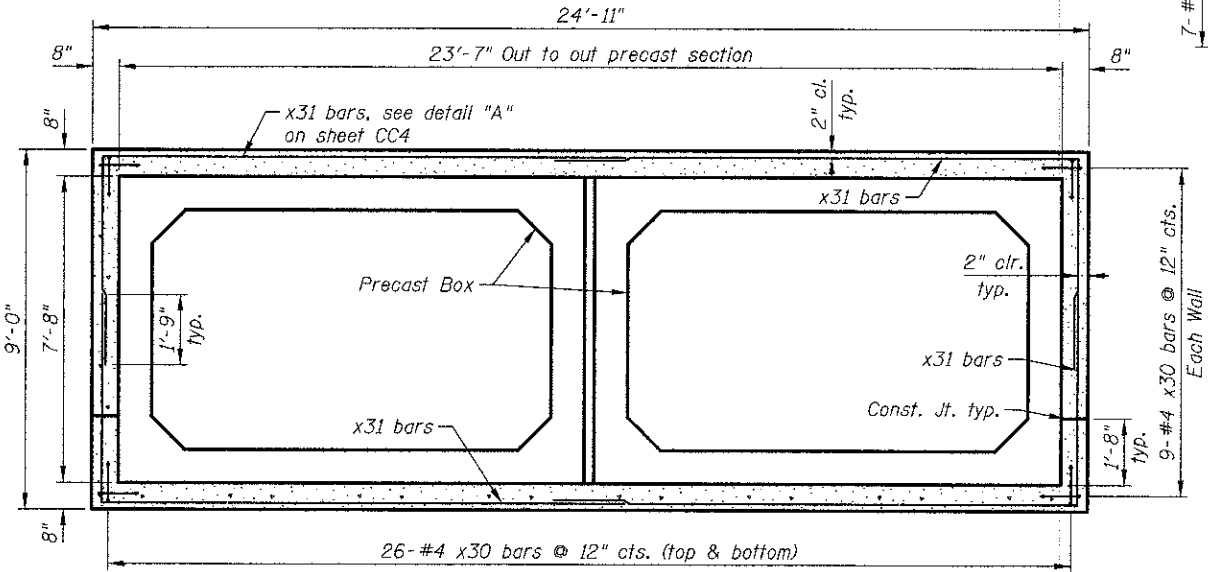
Bar	A	B	C
n80(E)	5'-0"	8"	6"
n81(E)	3'-3"	6"	4"

MINIMUM BAR LAP

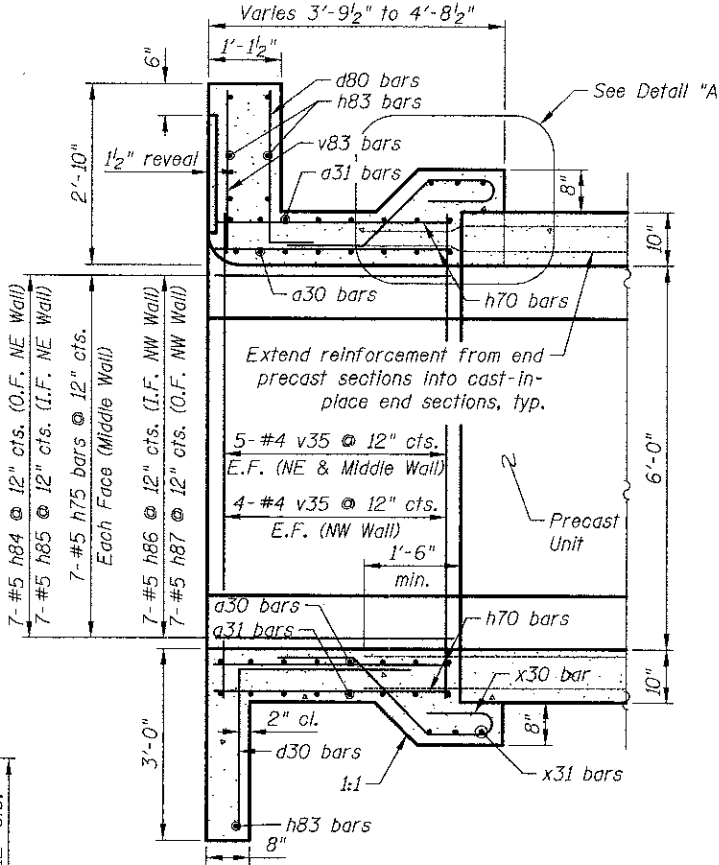
#4 bar = 1'-9"
#4(E) bar = 2'-7"
#6(E) bar = 3'-10"



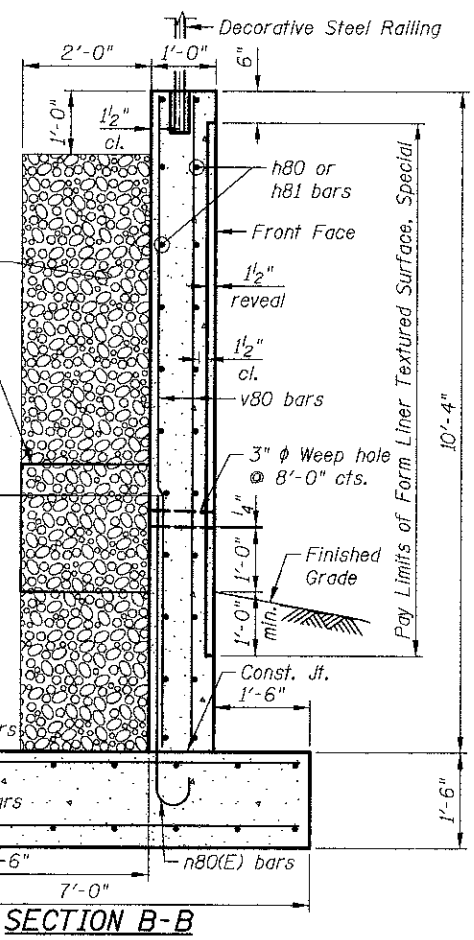
SECTION C-C



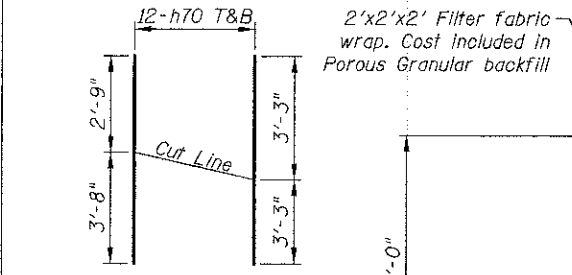
SECTION D-D



SECTION E-E



SECTION B-B



FIELD CUTTING DIAGRAM

11/22/12 11:32:42 AM J:\244\cc\016-6343\05_N_End_Details.dgn

CIVILTECH
450 E Devon Ave, Suite 300
Itasca, Illinois 60143
Tel: 630.773.3800 Fax: 630.773.3975
www.civiltechinc.com

DRAWN - J. SCHROEDER
DESIGNED - D. ATKINS
CHECKED - G. HATLESTAD
DATE - DECEMBER 17, 2012

REVISED -
REVISED -
REVISED -
REVISED -

**STATE OF ILLINOIS
DEPARTMENT OF TRANSPORTATION**

**NORTH END SECTION DETAILS
HASSELL ROAD OVER POPLAR CREEK
STRUCTURE NO. 016-6343**

SHEET NO. CC5 OF CC7 SHEETS