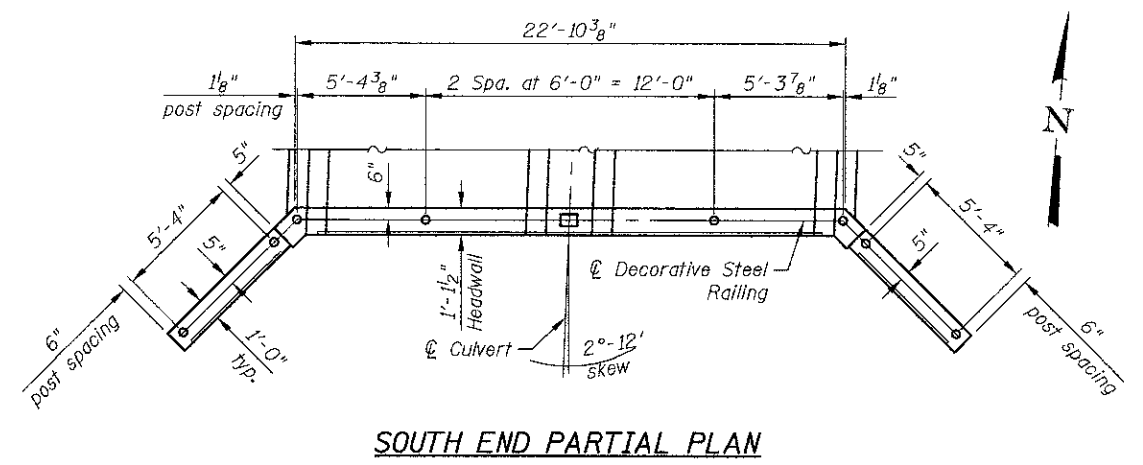
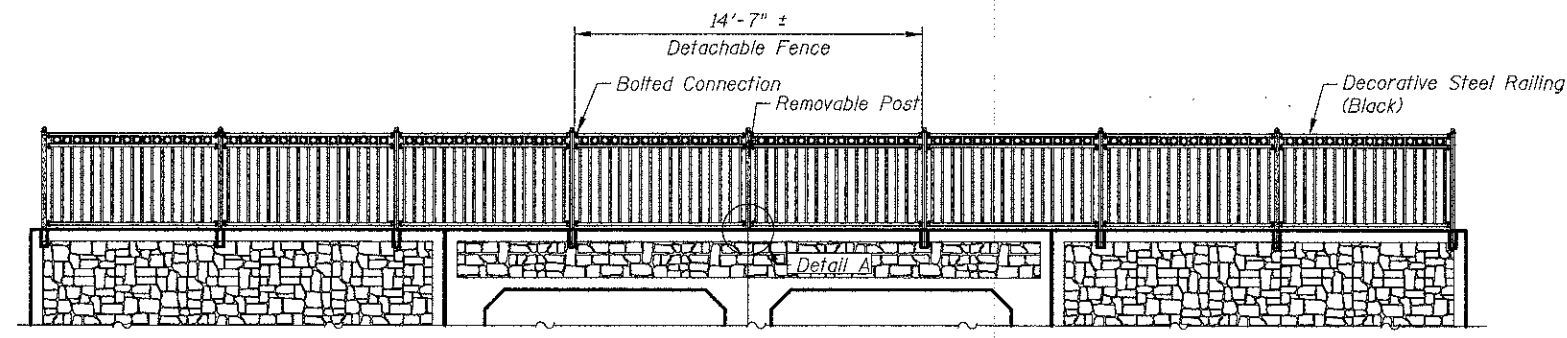


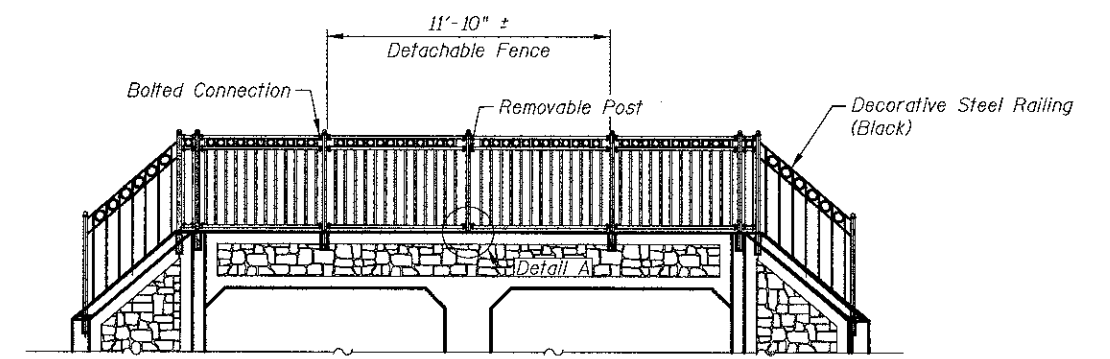
NORTH END PARTIAL PLAN
(Showing Dimensions)



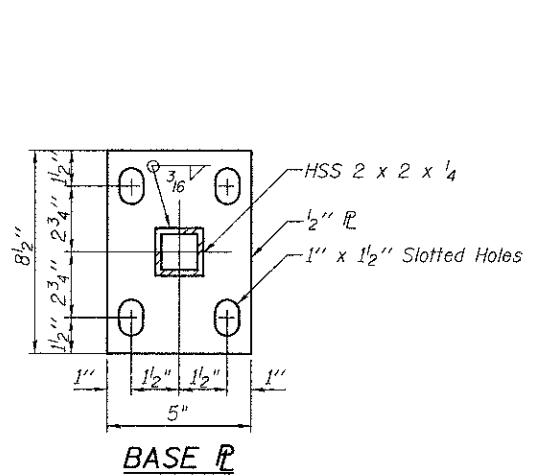
SOUTH END PARTIAL PLAN



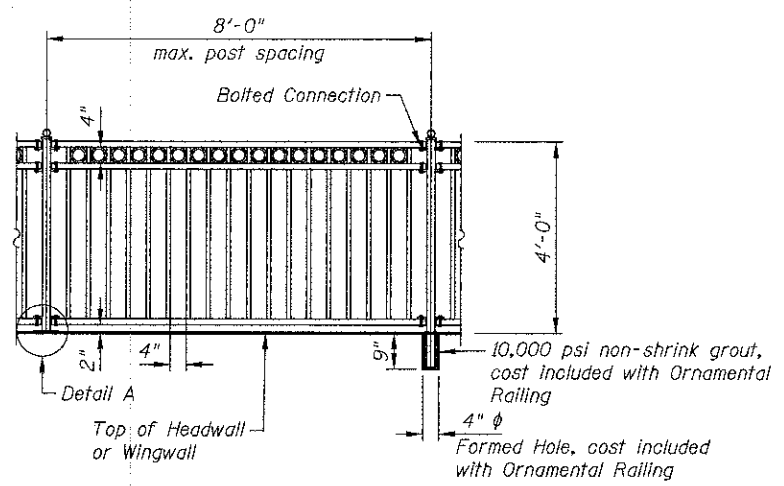
NORTH END VIEW - ELEVATION



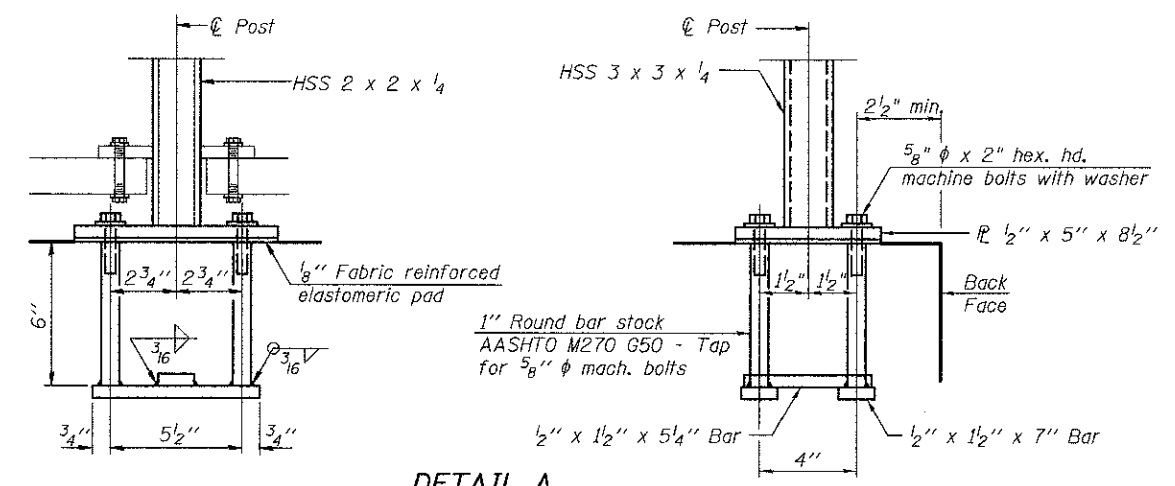
SOUTH END VIEW - ELEVATION



BASE PL



TYPICAL RAILING ELEVATION



DETAIL A

BILL OF MATERIAL

Item	Unit	Quantity
Decorative Steel Railing	Foot	95

2/12/2012 10:32:44 AM J:\2441\cadd\016-6343\05_Railing_Details.dgn

450 E Devon Ave, Suite 300
 Itasca, Illinois 60143
 Tel: 630.773.3900 Fax: 630.773.3975
 www.civiltechinc.com

DRAWN	- J. SCHROEDER	REVISED	-
DESIGNED	- D. ATKINS	REVISED	-
CHECKED	- G. HATLESTAD	REVISED	-
DATE	- DECEMBER 17, 2012	REVISED	-

STATE OF ILLINOIS
DEPARTMENT OF TRANSPORTATION

DECORATIVE STEEL RAILING DETAILS
HASSELL ROAD OVER POPLAR CREEK
STRUCTURE NO. 016-6343

F.A.I. RTE.	SECTION	COUNTY	TOTAL SHEETS	SHEET NO.
1100	11-00087-00-FP	COOK	164	120
CONTRACT NO. 63770				
ILLINOIS FED. AID PROJECT CMM 90037571				

SHEET NO. CC6 OF CC7 SHEETS