

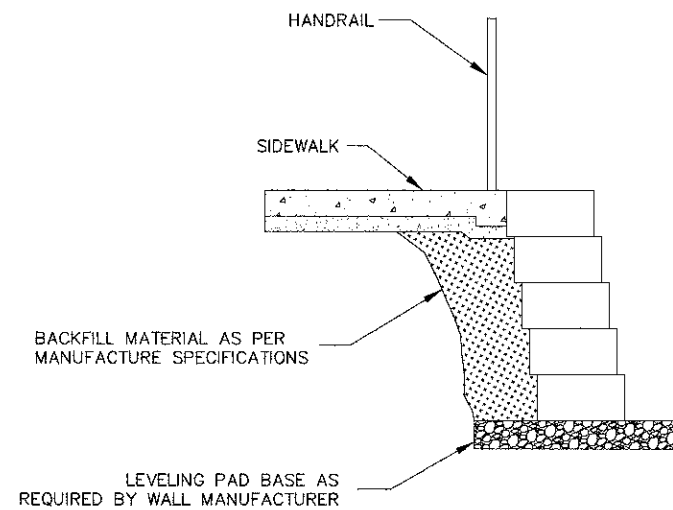
TYPE B6.12 CURB AND GUTTER

NOTES:

1. THE CURB SHALL BE DEPRESSED AT ALL APRONS AND ACROSS ALL SIDEWALK RAMPING IN ACCORDANCE WITH STANDARD 424001, 424011, 424021 AND ADA GUIDELINES.
2. CONTRACTION JOINTS TO BE TOOLED OR SAWCUT EVERY 15' TO A DEPTH OF 1.5".
3. EXPANSION JOINTS SHALL BE PROVIDED AT THE BEGINNING AND END OF ALL RETURN RADII, 5 FEET EITHER SIDE OF A DRAINAGE STRUCTURE, AT THE END OF A DAY'S POUR, AND/OR AT SPACING NOT TO EXCEED 100 FEET.

NOTE: ALL ITEMS LISTED ARE CONSIDERED INCIDENTAL TO THE APPLICABLE PAY ITEM.

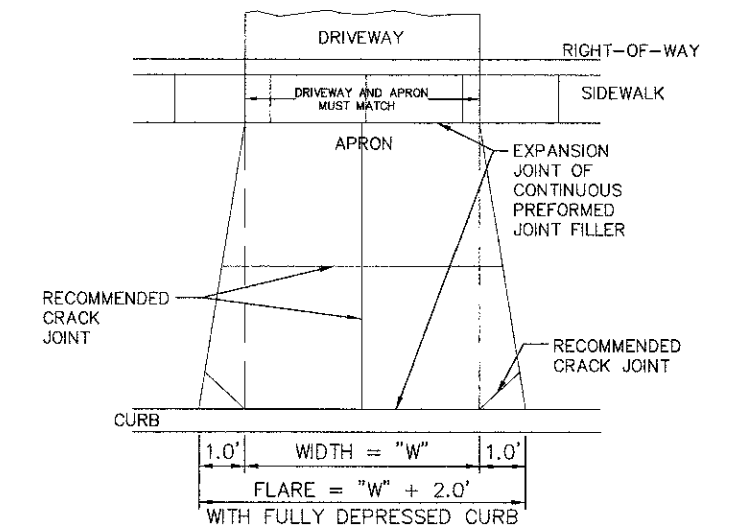
CURB AND GUTTER DETAIL



NOTE: BACKFILL AND LEVELING PAD BASE ARE INCIDENTAL TO SEGMENTAL BLOCK RETAINING WALL.

SEGMENTAL BLOCK RETAINING WALL TYPICAL SECTION

THE PROPOSED BLOCK, CAP BLOCK AND END UNITS OF THE SEGMENTAL BLOCK RETAINING WALL SHALL MATCH THE TYPE, COLOR, SIZE AND TEXTURE OF THE EXISTING RETAINING WALL.



NOTE: MINIMUM WIDTH, "W" = 10', MINIMUM FLARE = 12' MAXIMUM WIDTH, "W" = 28', MAXIMUM FLARE = 30'

NOTES:

CONCRETE

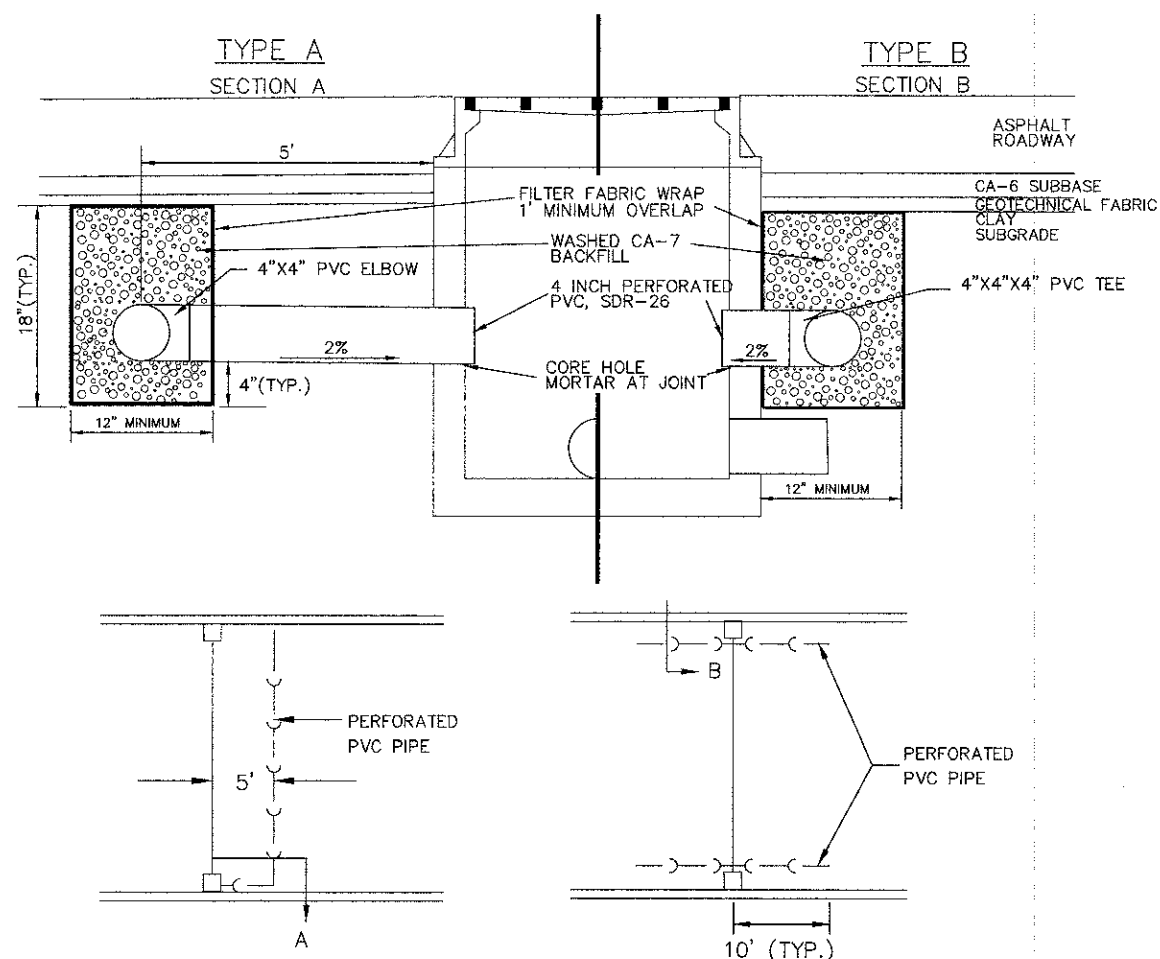
1. THE RESIDENTIAL APRON SHALL CONSIST OF 6" CONCRETE WITH 6" X 6", NO. 10 STEEL MESH REINFORCED, OVER 4" CA-6 CRUSHED STONE OR GRAVEL.
2. THE COMMERCIAL APRON SHALL CONSIST OF 8" CONCRETE WITH 6" X 6", NO. 10 STEEL MESH REINFORCED, OVER 6" CA-6 CRUSHED STONE OR GRAVEL.
3. CONCRETE TO BE IDOT APPROVED MIX, MIN. 3500 PSI COMPRESSIVE STRENGTH
4. CONCRETE MUST BE CURED IN ACCORDANCE WITH CONTRACT SPECIFICATIONS

ASPHALT

1. THE APRON SHALL CONSIST OF 2" ASPHALT OVER 10" CA-6 CRUSHED STONE OR GRAVEL.

NOTE: ALL ITEMS LISTED ARE CONSIDERED INCIDENTAL TO THE APPLICABLE DRIVEWAY PAY ITEM

APRON DETAIL

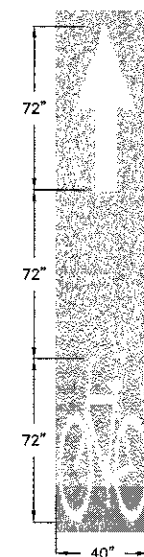


TYPE A

TYPE B

NOTE: ALL ITEMS LISTED ARE CONSIDERED INCIDENTAL TO THE APPLICABLE UNDERDRAIN PAY ITEM.

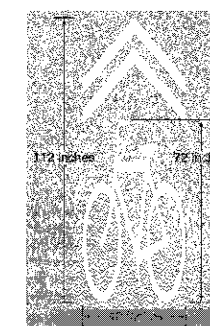
PIPE UNDERDRAIN DETAIL



NOTES:

1. STRIPING TO BE PERFORMED THERMOPLASTIC PAVEMENT MARKING.

BIKE LANE STRIPING DETAIL



NOTES:

1. STRIPING TO BE PERFORMED THERMOPLASTIC PAVEMENT MARKING.
2. STRIPING TO BE PLACED 11 FEET (ON CENTER) FROM FACE OF CURB WHEN ADJACENT TO A PARKING LANE.

SHARROW STRIPING DETAIL

FILE NAME =  
DETAILSH.DWG

DESIGNED --  
DRAWN --  
CHECKED --  
DATE --

REVISED --  
REVISED --  
REVISED --  
REVISED --

STATE OF ILLINOIS  
DEPARTMENT OF TRANSPORTATION

Hassell Road STP Project  
Details

SCALE: NONE SHEET NO. 1 OF 4 SHEETS STA. TO STA.

F.A.U. RTE.	SECTION	COUNTY	TOTAL SHEETS	SHEET NO.
1100	11-00087-00-FP	Cook	164	125
				CONTRACT NO. 63770
ILLINOIS FED. AID PROJECT CMM 9003(757)				