

F.A.U. RTE.	SECTION	COUNTY	TOTAL SHEETS	SHEET NO.
1037	10-00024-00-FP	COOK	59	1
FEDERAL ROAD DISTRICT NO. 1 ILLINOIS		FEDERAL AID PROJECT		

STATE OF ILLINOIS

DEPARTMENT OF TRANSPORTATION  
DIVISION OF HIGHWAYS

PLAN FOR PROPOSED  
FEDERAL AID HIGHWAY

F.A.U. ROUTE 1037 (HAVEN AVENUE)

163RD STREET TO 159TH STREET (IL ROUTE 6)

SECTION 10-00024-00-FP

PROJECT NO. M-9003 (735)

ROADWAY RECONSTRUCTION

VILLAGE OF ORLAND HILLS

COOK COUNTY

JOB NO: C-91-175-11



SHEET NO.	DESCRIPTION
1	TITLE SHEET
2	GENERAL NOTES
3	SUMMARY OF QUANTITIES
4	CONSTRUCTION DETAILS
5	TYPICAL SECTIONS
6 - 7	ALIGNMENT, TIES AND BENCHMARKS
8	MAINTENANCE OF TRAFFIC - DETOUR PLAN
9 - 11	EXISTING CONDITIONS AND REMOVAL PLAN
12 - 17	ROADWAY PLAN AND PROFILE
18	STORM SEWER STRUCTURE AND PIPE SCHEDULE
19 - 21	PAVEMENT MARKING PLAN
22 - 24	LANDSCAPING AND EROSION CONTROL PLAN
25 - 58	CROSS SECTIONS - HAVEN AVENUE
57 - 59	DOT DETAILS

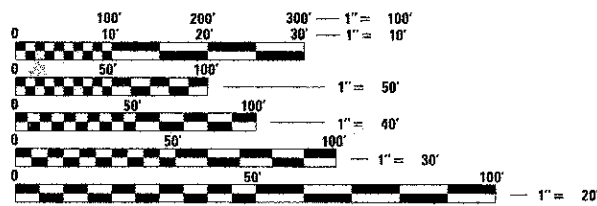
LIST OF STATE STANDARDS

000001-06	STANDARD SYMBOLS, ABBREVIATION AND PATTERNS
280001-07	TEMPORARY EROSION CONTROL SYSTEMS
424001-07	PERPENDICULAR CURB RAMPS FOR SIDEWALKS
424021-01	DEPRESSED CORNER FOR SIDEWALKS
424026-01	ENTRANCE / ALLEY PEDESTRIAN CROSSING
602001-02	CATCH BASIN, TYPE A
602011-02	CATCH BASIN, TYPE C
602301-03	INLET, TYPE A
602401-03	MANHOLE, TYPE A
602601-02	PRECAST REINFORCED CONCRETE FLAT SLAB TOP
602701-02	MANHOLE STEPS
604001-03	FRAME AND LIDS, TYPE 1
604036-02	GRATE, TYPE 8
606001-05	CONCRETE CURB TYPE B AND COMBINATION CURB AND GUTTER
701301-04	LANE CLOSURE, 2L, 2W, SHORT TIME OPERATIONS
701501-06	URBAN LANE CLOSURE, 2L, 2W, UNDIVIDED
701801-05	LANE CLOSURE, MULTILANE 1W OR 2W CROSSWALK OR SIDEWALK CLOSURE
701901-02	TRAFFIC CONTROL DEVICES
780001-03	TYPICAL PAVEMENT MARKINGS
781001-03	TYPICAL APPLICATIONS RAISED REFLECTIVE PAVEMENT MARKINGS
TC-10	TRAFFIC CONTROL AND PROTECTION FOR SIDE ROADS, INTERSECTIONS AND DRIVEWAYS
TC-13	DISTRICT ONE TYPICAL PAVEMENT MARKINGS
TC-16	PAVEMENT MARKING LETTERS AND SYMBOLS FOR TRAFFIC STAGING

THE CONTRACTOR SHALL BE SOLELY RESPONSIBLE FOR JOB SITE SAFETY AS WELL AS SUPERVISION DIRECTION AND MEANS/METHODS OF CONSTRUCTION

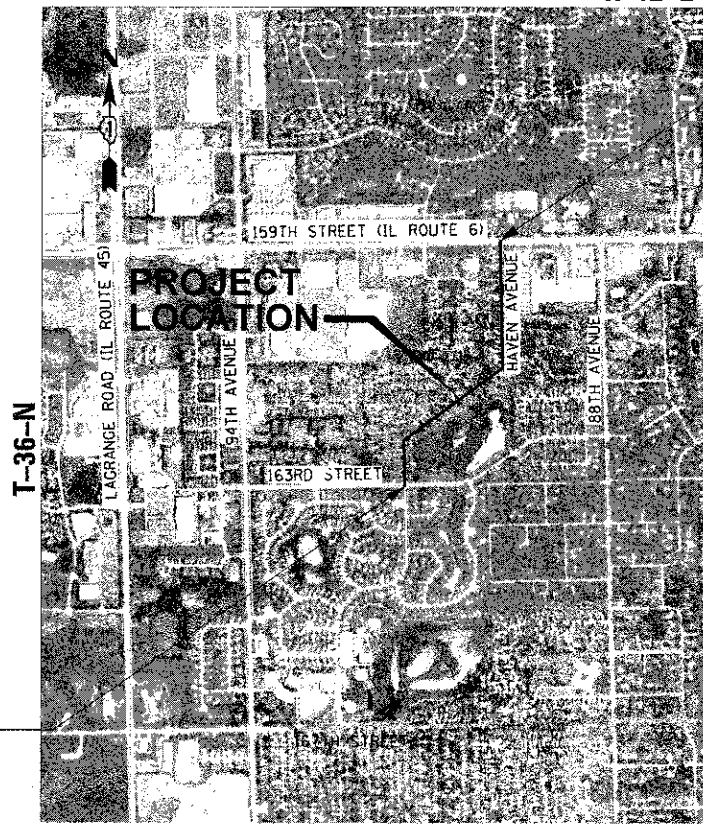
CALL JULIE 811  
WITH THE FOLLOWING:

COUNTY COOK  
CITY-TOWNSHIP VILLAGE OF ORLAND HILLS  
SECTION & RANGE SEC. 22, T36N, R12E, 3RD PM  
48 HOURS BEFORE YOU DIG.  
EXCLUDING SAT., SUN., & HOLIDAYS



FULL SIZE PLANS HAVE BEEN PREPARED USING STANDARD ENGINEERING SCALES. REDUCED SIZED PLANS WILL NOT CONFORM TO STANDARD SCALES. IN MAKING MEASUREMENTS ON REDUCED PLANS, THE ABOVE SCALES MAY BE USED.

CONTRACT NO. 63773



BEGIN IMPROVEMENTS  
STA. 10 + 00.00

END IMPROVEMENTS  
STA. 42 + 09.00

PROJECT LOCATED IN THE  
VILLAGE OF ORLAND HILLS

LOCATION MAP  
GROSS LENGTH = 3,209 FT. = 0.607 MILE  
NET LENGTH = 3,209 FT. = 0.607 MILE

DESIGN DESIGNATION  
F.A.U. ROUTE 1037 (HAVEN AVENUE)  
COLLECTOR  
TRAFFIC DATA  
F.A.U. (HAVEN AVENUE)  
(2012) = 1,900  
POSTED SPEED LIMIT  
F.A.U. (HAVEN AVENUE) = 20 MPH  
DESIGN SPEED  
F.A.U. (HAVEN AVENUE) = 20 MPH



Casey J. McCollom  
ENGINEER  
12/4/12  
DATE  
CASEY J. MCCOLLOM P.E.  
ILLINOIS REGISTRATION No. 062-2059173  
EXPIRATION DATE: 11/13

STATE OF ILLINOIS  
DEPARTMENT OF TRANSPORTATION  
DIVISION OF HIGHWAYS

APPROVED 12/11/12 20 12  
Kyle R. Hartings MAYOR  
VILLAGE OF ORLAND HILLS MAYOR

PASSED DECEMBER 20 20 12  
C. J. Holt C.J. Holt  
DISTRICT 1 ENGINEER OF LOCAL ROADS AND STREETS

RELEASED WITH LIMITED REVIEW  
December 21 20 12  
John Fortman  
DEPUTY DIRECTOR OF HIGHWAYS, REGION 1 ENGINEER

CHRISTOPHER B. BURKE ENGINEERING, LTD.  
1938 E. Lincoln Highway, Suite 212  
New Lenox, Illinois 60451  
(815) 463-9050  
PROFESSIONAL DESIGN FIRM NO. 184-001175  
EXPIRATION DATE: 04/30/13

PROGRAM AND OFFICE ENGINEER: CHARLES F. RIDDLER, P.E. (847) 705-4406 SCHAUMBURG, IL