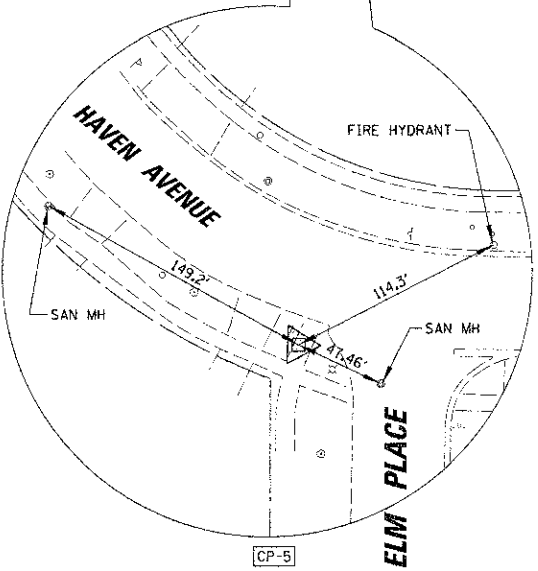
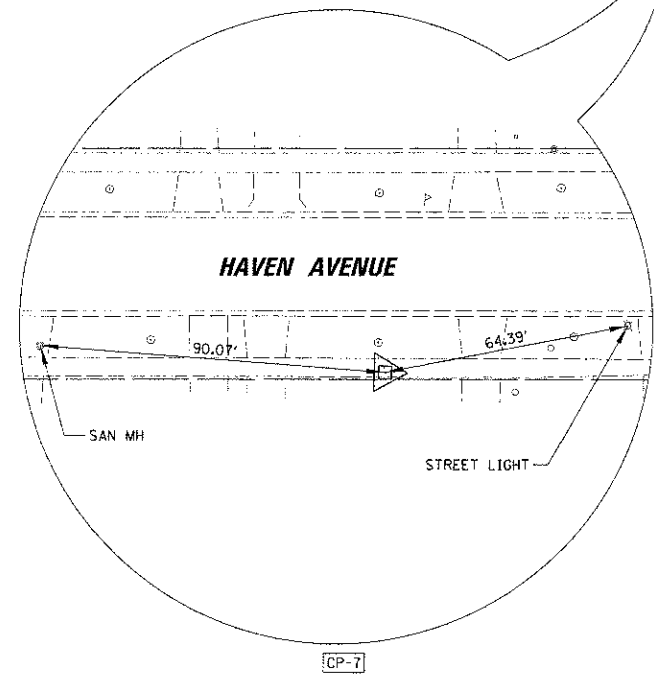
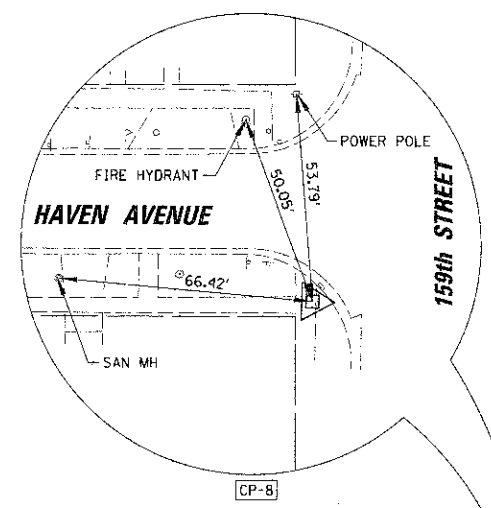
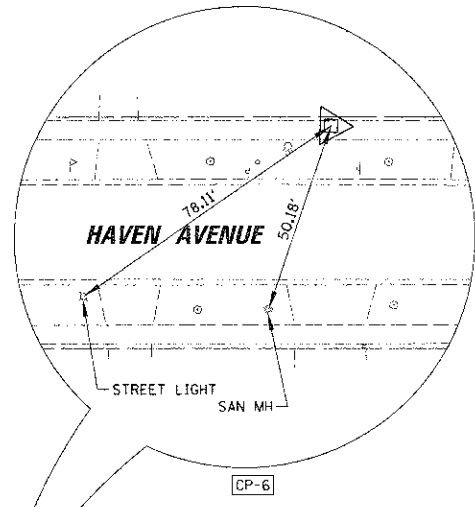
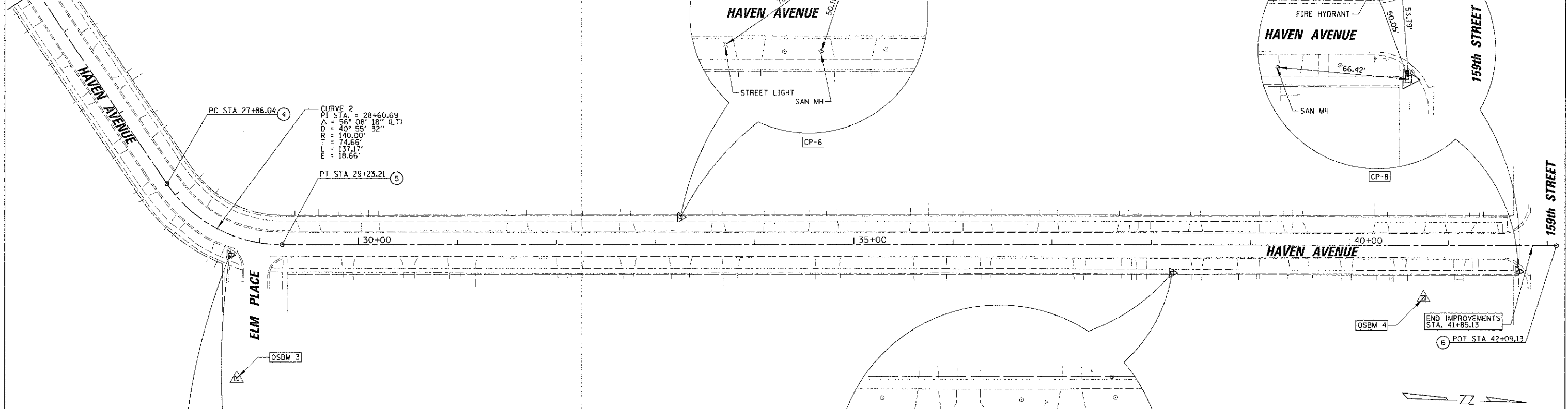


MATCH LINE
STA 25+50



HORIZONTAL CONTROL POINTS

CONTROL POINT	NORTHING	EASTING	DESCRIPTION	STATION	OFFSET	ELEVATION
CP-1	1795091.9380	1118832.4610	X-CUT	9+94.04	32.26 LT	709.88
CP-2	1795662.6070	1118877.5130	PK NAIL	15+72.33	24.30 RT	715.81
CP-639	1795917.6749	1119104.3144	PK NAIL	19+28.00	18.05 LT	711.74
CP-1147	1795956.6826	1119233.5300	X-CUT	20+55.61	25.94 RT	710.68
CP-4	1796185.8942	1119549.6236	PK NAIL	24+45.06	25.06 RT	712.04
CP-5	1796471.0026	1119880.5982	X-CUT	28+75.83	19.20 RT	716.52
CP-6	1796924.2418	1119827.2229	PK NAIL	33+25.16	27.70 LT	723.52
CP-7	1797421.6530	1119866.1462	PK NAIL	38+20.95	28.18 RT	725.40
CP-8	1797770.7239	1119852.0646	X-CUT	41+70.30	26.02 RT	719.95

ALIGNMENT COORDINATES

POINT NO.	STA.	NORTHING	EASTING
1	10+00.00	1,795,098.94	1,118,864.51
2	15+18.88	1,795,617.55	1,118,847.56
3	16+85.19	1,795,760.95	1,118,917.99
4	27+86.04	1,796,405.17	1,119,810.64
5	29+23.21	1,796,523.47	1,119,868.63
6	42+09.13	1,797,808.65	1,119,824.73

ELEVATION BENCHMARKS DATUM: NAVD '88 (GEOID '99)		
NO.	DESCRIPTION	ELEV.
OSBM 1	SQUARE CUT ON WESTERLY EDGE OF CONC. BASE OF STREET LIGHT LOCATED AT THE NORTHEAST CORNER OF HAVEN AVE. & MEADOWVIEW DR.	710.29
OSBM 2	THE SOUTHWEST CORNER OF FIRST CONC. STEP UP FROM WALK OF STEPS TO HOUSE #16201 HAVEN AV.	714.21
OSBM 3	RAILROAD SPIKE SET IN NORTHERLY FACE OF WOOD LIGHT POLE LOCATED ON SOUTH SIDE OF ELM ST. APPROX. 150' ± EAST OF C. OF HAVEN AV.	719.00
OSBM 4	THE NORTHWEST CORNER OF FIRST CONC. STEP UP FROM WALK OF STEPS TO HOUSE #15909 HAVEN AV.	724.04

CB CHRISTOPHER B. BURKE
ENGINEERING, LTD.
1938 E. Lincoln Highway, Suite 212
New Lenox, Illinois 60451
(815) 463-9050

USER NAME = mkanace
DESIGNED CJM
DRAWN MAK
CHECKED DV
DATE

REVISIONS
REVISED -
REVISED -
REVISED -
REVISED -

STATE OF ILLINOIS
DEPARTMENT OF TRANSPORTATION

ALIGNMENT, TIES AND BENCHMARKS
HAVEN AVENUE

SCALE: 1" = 50' SHEET 7 OF 59 SHEETS STA. 25+50.00 TO STA. 42+10+00

F.A.U. RTE.	SECTION	COUNTY	TOTAL SHEETS	SHEET NO.
1037	10-00024-00-PP	COOK	59	7
CONTRACT NO. 63773				
ILLINOIS FED. AID PROJECT				