

55100500 STORM SEWER REMOVAL - 12"

STA. 258+23.80 TO 258+29.20 - 4.0'  
 STA. 260+51.97 TO 260+40.10 - 44.0'  
 STA. 262+49.74 TO 260+91.33 - 155.0'  
 STA. 260+91.33 TO 260+42.18 - 49.0'  
 STA. 260+66.72 TO 260+63.35 - 26.0'  
 STA. 261+01.25 TO 260+51.01 - 48.0'  
 TOTAL - 326.0'

55100900 STORM SEWER REMOVAL - 18"

STA. 259+00.56 TO 259+68.34 - 68.0'  
 STA. 259+68.99 TO 260+39.41 - 70.0'  
 STA. 260+38.60 TO 260+37.67 - 55.0'  
 STA. 260+37.67 TO 260+39.41 - 19.0'  
 STA. 257+96.00 TO 258+28.93 - 33.0'  
 TOTAL - 245.0'

55101400 STORM SEWER REMOVAL - 30"

STA. 256+49.12 TO 258+29.20 - 180.0'  
 TOTAL - 180.0'

55101600 STORM SEWER REMOVAL - 36"

258+29.20 TO 260+51.01 - 220.0'  
 TOTAL - 220.0'

55100700 STORM SEWER REMOVAL - 15"

256+53.78 TO 257+52.00 - 98.0'  
 INLET TO MANHOLE - 58.0'  
 TOTAL - 156.0'

44000500 COMBINATION CURB AND GUTTER REMOVAL

STA. 256+49.12 TO 260+49.58, RT - 511.6'  
 STA. 260+75.87 TO 262+48.77, RT - 289.6'  
 STA. 256+49.08 TO 258+96.57, LT - 248.2'  
 STA. 258+93.79 TO 260+39.26, LT - 352.9'  
 STA. 260+73.54 TO 260+72.35, LT - 29.7'  
 STA. 260+71.86 TO 262+49.78, LT - 341.2'  
 TOTAL - 1773.2'

44000600 SIDEWALK REMOVAL (SQ FT)

STA. 256+49.13 TO 260+46.36, RT - 1,890.1  
 STA. 259+34.18 TO 259+39.18, RT - 76.2  
 STA. 259+95.00 TO 260+00.00, RT - 77.8  
 STA. 260+35.57 TO 260+35.86, RT - 495.5  
 STA. 260+35.87 TO 260+36.08, RT - 12.3  
 STA. 260+85.45 TO 260+85.89, RT - 81.0  
 STA. 260+86.08 TO 260+88.32, RT - 427.9  
 STA. 260+83.20 TO 262+48.58, RT - 725.1  
 STA. 256+50.00 TO 257+29.38, LT - 791.5  
 STA. 257+57.89 TO 258+96.21, LT - 648.1  
 STA. 259+25.91 TO 260+34.57, LT - 482.6  
 STA. 260+31.16 TO 260+31.63, LT - 745.1  
 STA. 260+31.92 TO 260+32.26, LT - 120.8  
 STA. 260+80.34 TO 260+79.17, LT - 122.6  
 STA. 260+79.35 TO 260+77.04, LT - 235.0  
 STA. 260+76.79 TO 260+73.87, LT - 411.5  
 STA. 260+72.42 TO 262+49.96, LT - 792.1  
 STA. 261+09.02 TO 261+14.02, RT - 96.6  
 STA. 261+55.04 TO 261+20.04, LT - 68.4  
 TOTAL - 8300.2 SQ FT

60500060 REMOVING INLETS

256+49.16, 34.2 LT  
 256+70.59, 88.0 LT  
 258+23.80, 3.1 RT  
 258+30.28, 37.8 LT  
 258+85.52, 3.1 RT  
 258+98.96, 37.8 LT  
 260+37.67, 55.9 LT  
 260+91.33, 36.9 LT  
 260+66.72, 56.9 LT  
 261+01.25, 4.3 RT  
 TOTAL - 10 EACH

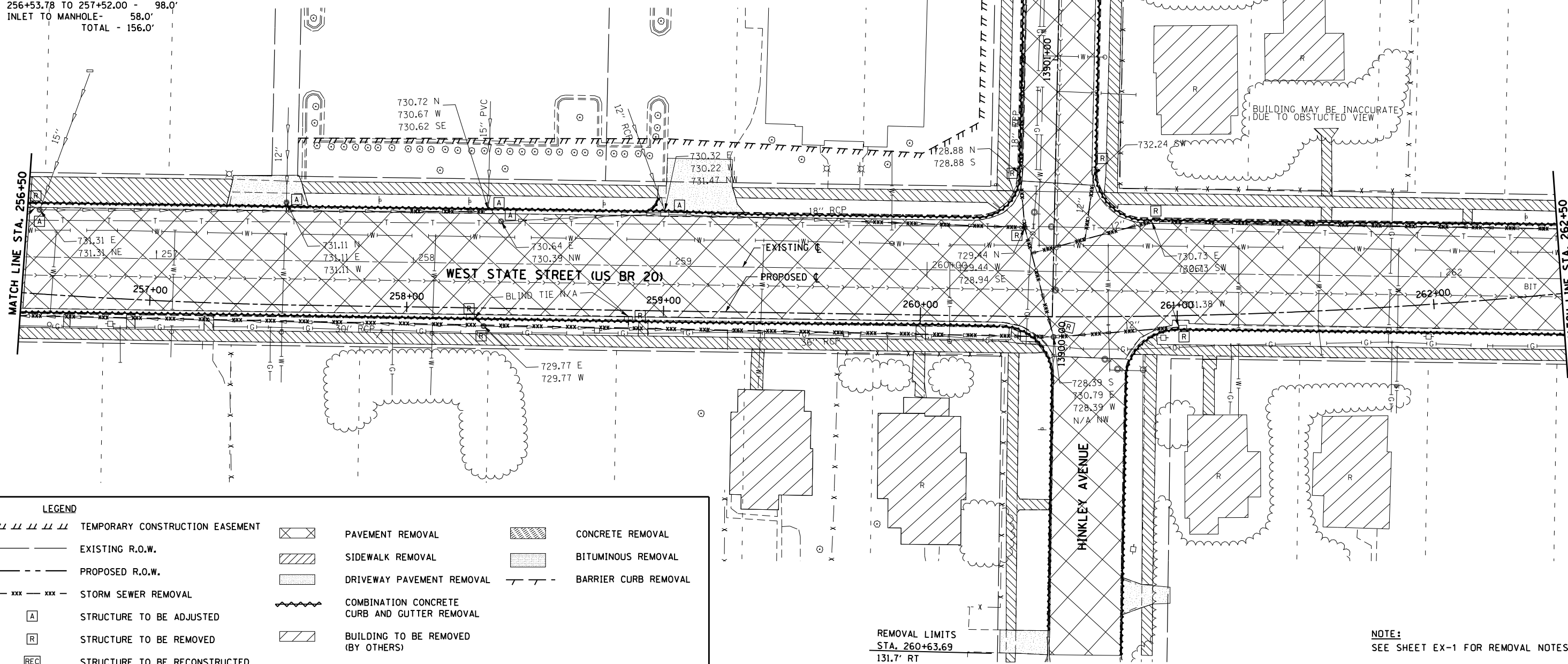
60500040 REMOVING MANHOLES

256+53.78, 33.0 LT  
 256+53.85, 32.7 LT  
 257+51.50, 40.0 LT  
 258+29.20, 6.9 RT  
 258+35.35, 34.0 LT  
 260+39.41, 34.8 LT  
 260+52.97, 7.9 RT  
 TOTAL - 7 EACH

44000100 PAVEMENT REMOVAL (SY)

STA. 256+50 TO 262+50 - 2738.5 SO YD  
 STA. 13900+52 TO 13902+54 - 606.3 SO YD  
 STA. 260+66 RT - 358.6 SO YD  
 TOTAL - 3,703.3 SO YD

REMOVAL LIMITS  
 STA. 13902+55.0



**LEGEND**

---	TEMPORARY CONSTRUCTION EASEMENT	[Hatched Box]	PAVEMENT REMOVAL	[Hatched Box]	CONCRETE REMOVAL
---	EXISTING R.O.W.	[Hatched Box]	SIDEWALK REMOVAL	[Hatched Box]	BITUMINOUS REMOVAL
- - -	PROPOSED R.O.W.	[Hatched Box]	DRIVEWAY PAVEMENT REMOVAL	[Hatched Box]	BARRIER CURB REMOVAL
- xxx - xxx -	STORM SEWER REMOVAL	[Wavy Line]	COMBINATION CONCRETE CURB AND GUTTER REMOVAL	[Hatched Box]	BUILDING TO BE REMOVED (BY OTHERS)
[A]	STRUCTURE TO BE ADJUSTED				
[R]	STRUCTURE TO BE REMOVED				
[REC]	STRUCTURE TO BE RECONSTRUCTED				

REMOVAL LIMITS  
 STA. 260+63.69  
 131.7' RT

**NOTE:**  
 SEE SHEET EX-1 FOR REMOVAL NOTES.

McDonough Associates Inc.  
 Engineers / Architects  
 130 East Randolph Street, Chicago, Illinois 60601

FILE NAME =	USER NAME = dosddd	DESIGNED - JWM	REVISED -
et:\pwork\p\dot\dosddd\0317613\0264750-sht-rem051.dgn		DRAWN - JPF	REVISED -
PLOT SCALE = 40.0000' / in.		CHECKED - RCH	REVISED -
PLOT DATE = Mon Dec 17 13:27:09 2012		DATE - \$SUBDATE\$	REVISED -

STATE OF ILLINOIS  
 DEPARTMENT OF TRANSPORTATION

EXISTING REMOVAL PLAN  
 WEST STATE STREET (US BUS 20)

SCALE: SHEET NO. 4 OF 18 SHEETS STA. 256+50 TO STA. 262+50

F.A.P. RTE.	SECTION	COUNTY	TOTAL SHEETS	SHEET NO.
303	41R	WINNEBAGO	327	51
FED. ROAD DIST. NO. 2 ILLINOIS FED. AID PROJECT			CONTRACT NO. 64750	