



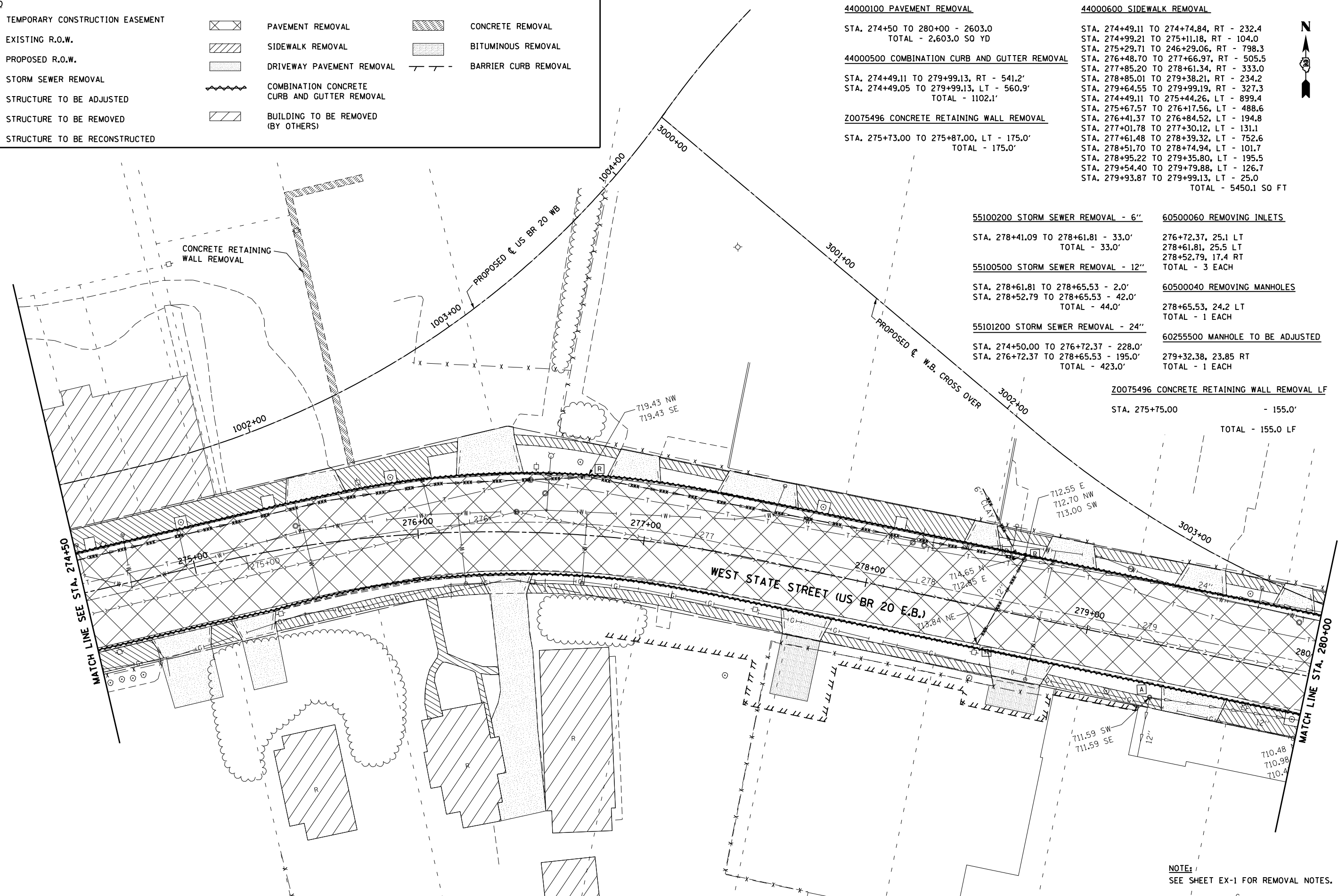
LEGEND

- /// TEMPORARY CONSTRUCTION EASEMENT
- EXISTING R.O.W.
- - - PROPOSED R.O.W.
- xxx - xxx - STORM SEWER REMOVAL
- [A] STRUCTURE TO BE ADJUSTED
- [R] STRUCTURE TO BE REMOVED
- [REC] STRUCTURE TO BE RECONSTRUCTED
- [Hatched Box] PAVEMENT REMOVAL
- [Diagonal Lines] SIDEWALK REMOVAL
- [Dotted Box] DRIVEWAY PAVEMENT REMOVAL
- [Wavy Line] COMBINATION CONCRETE CURB AND GUTTER REMOVAL
- [Diagonal Lines] BUILDING TO BE REMOVED (BY OTHERS)
- [Hatched Box] CONCRETE REMOVAL
- [Dotted Box] BITUMINOUS REMOVAL
- [Dashed Line] BARRIER CURB REMOVAL

- 44000100 PAVEMENT REMOVAL**
STA. 274+50 TO 280+00 - 2603.0
TOTAL - 2,603.0 SQ YD
- 44000500 COMBINATION CURB AND GUTTER REMOVAL**
STA. 274+49.11 TO 279+99.13, RT - 541.2'
STA. 274+49.05 TO 279+99.13, LT - 560.9'
TOTAL - 1102.1'
- Z0075496 CONCRETE RETAINING WALL REMOVAL**
STA. 275+73.00 TO 275+87.00, LT - 175.0'
TOTAL - 175.0'
- 44000600 SIDEWALK REMOVAL**
STA. 274+49.11 TO 274+74.84, RT - 232.4
STA. 274+99.21 TO 275+11.18, RT - 104.0
STA. 275+29.71 TO 246+29.06, RT - 798.3
STA. 276+48.70 TO 277+66.97, RT - 505.5
STA. 277+85.20 TO 278+61.34, RT - 333.0
STA. 278+85.01 TO 279+38.21, RT - 234.2
STA. 279+64.55 TO 279+99.19, RT - 327.3
STA. 274+49.11 TO 275+44.26, LT - 899.4
STA. 275+67.57 TO 276+17.56, LT - 488.6
STA. 276+41.37 TO 276+84.52, LT - 194.8
STA. 277+01.78 TO 277+30.12, LT - 131.1
STA. 277+61.48 TO 278+39.32, LT - 752.6
STA. 278+51.70 TO 278+74.94, LT - 101.7
STA. 278+95.22 TO 279+35.80, LT - 195.5
STA. 279+54.40 TO 279+79.88, LT - 126.7
STA. 279+93.87 TO 279+99.13, LT - 25.0
TOTAL - 5450.1 SQ FT

- 55100200 STORM SEWER REMOVAL - 6"**
STA. 278+41.09 TO 278+61.81 - 33.0'
TOTAL - 33.0'
- 55100500 STORM SEWER REMOVAL - 12"**
STA. 278+61.81 TO 278+65.53 - 2.0'
STA. 278+52.79 TO 278+65.53 - 42.0'
TOTAL - 44.0'
- 55101200 STORM SEWER REMOVAL - 24"**
STA. 274+50.00 TO 276+72.37 - 228.0'
STA. 276+72.37 TO 278+65.53 - 195.0'
TOTAL - 423.0'
- 60500060 REMOVING INLETS**
276+72.37, 25.1 LT
278+61.81, 25.5 LT
278+52.79, 17.4 RT
TOTAL - 3 EACH
- 60500040 REMOVING MANHOLES**
278+65.53, 24.2 LT
TOTAL - 1 EACH
- 60255500 MANHOLE TO BE ADJUSTED**
279+32.38, 23.85 RT
TOTAL - 1 EACH

- Z0075496 CONCRETE RETAINING WALL REMOVAL LF**
STA. 275+75.00 - 155.0'
TOTAL - 155.0 LF



NOTE:
SEE SHEET EX-1 FOR REMOVAL NOTES.

McDonough Associates Inc.
 Engineers / Architects
 130 East Randolph Street, Chicago, Illinois 60601

FILE NAME =	USER NAME = dossed	DESIGNED - JWM	REVISED -
et:\pw\work\p\dot\dossed\0317613\026475	0-sht-rem054.dgn	DRAWN - JPF	REVISED -
	PLOT SCALE = 40.0000' / in.	CHECKED - RCH	REVISED -
	PLOT DATE = Mon Dec 17 13:30:09 2012	DATE - \$SUBDATE\$	REVISED -

**STATE OF ILLINOIS
DEPARTMENT OF TRANSPORTATION**

**EXISTING REMOVAL PLAN
WEST STATE STREET (US BUS 20)**

SCALE: SHEET NO. 7 OF 18 SHEETS STA. 274+50 TO STA. 280+00

F.A.P. RTE.	SECTION	COUNTY	TOTAL SHEETS	SHEET NO.
303	41R	WINNEBAGO	327	54
FED. ROAD DIST. NO. 2 ILLINOIS FED. AID PROJECT			CONTRACT NO. 64750	