

44000100 PAVEMENT REMOVAL

STA. 279+99 TO 280+86 - 384.4
 STA. 280+97 TO 282+23 - 614.4
 TOTAL - 998.8 SQ YD

44000500 COMBINATION CURB AND GUTTER REMOVAL

STA. 279+99.13 TO 280+84.35, RT - 85.4'
 STA. 280+99.89 TO 281+72.97, RT - 73.2'
 STA. 281+97.38 TO 282+22.16, RT - 24.8'
 STA. 279+99.13 TO 280+80.72, LT - 81.0'
 STA. 280+98.44 TO 282+22.13, LT - 123.7'
 STA. 281+84.62 TO 281+82.77, LT - 4.7'
 STA. 282+04.14 TO 282+23.20, LT - 19.1'
 TOTAL - 411.9'

44000600 SIDEWALK REMOVAL

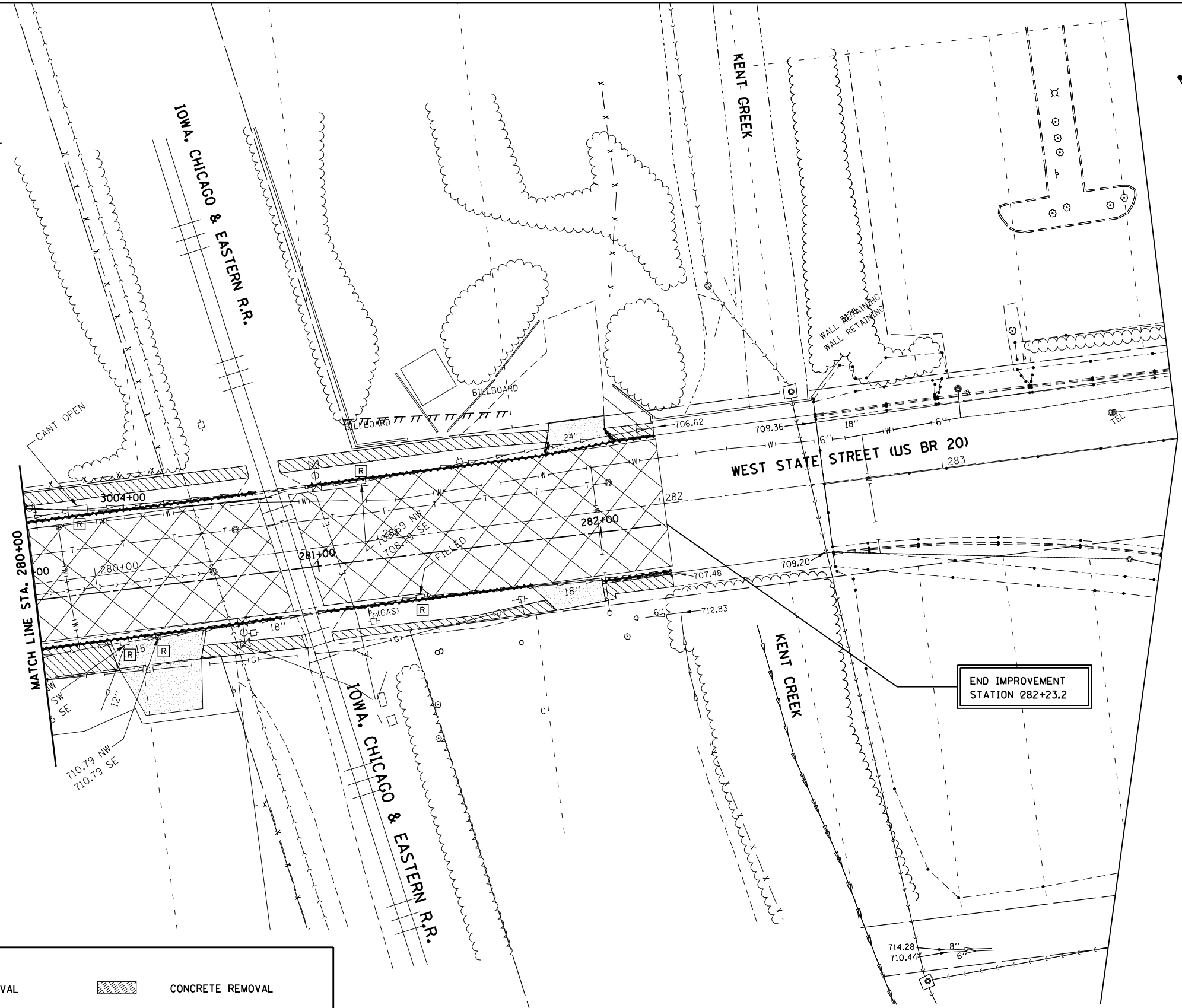
STA. 279+99.19 TO 280+53.75, RT - 262.4
 STA. 280+55.03 TO 280+90.82, RT - 163.1
 STA. 281+01.13 TO 281+78.83, RT - 208.5
 STA. 281+97.60 TO 282+23.20, RT - 111.5
 STA. 279+99.13 TO 280+78.32, LT - 355.1
 STA. 280+89.49 TO 281+84.51, LT - 409.5
 STA. 282+05.80 TO 282+23.20, LT - 74.1
 TOTAL - 1584.2 SQ FT

60500060 REMOVING INLETS

280+28.34, 18.6 RT
 280+17.49, 29.4 LT
 281+17.42, 27.5 RT
 281+33.42, 15.3 LT
 TOTAL - 4 EACH

60500040 REMOVING MANHOLES

280+40.28, 18.3 RT
 TOTAL - 4 EACH



END IMPROVEMENT
 STATION 282+23.2

NOTE:
 SEE SHEET EX-1 FOR REMOVAL NOTES.

McDonough Associates Inc.
 Engineers / Architects
 130 East Randolph Street, Chicago, Illinois 60601

LEGEND	
— — — — —	TEMPORARY CONSTRUCTION EASEMENT
— — — — —	EXISTING R.O.W.
- - - - -	PROPOSED R.O.W.
- xxx - xxx -	STORM SEWER REMOVAL
[A]	STRUCTURE TO BE ADJUSTED
[R]	STRUCTURE TO BE REMOVED
[REC]	STRUCTURE TO BE RECONSTRUCTED
[X]	PAVEMENT REMOVAL
[//]	SIDEWALK REMOVAL
[]	DRIVEWAY PAVEMENT REMOVAL
[~]	COMBINATION CONCRETE CURB AND GUTTER REMOVAL
[/]	BUILDING TO BE REMOVED (BY OTHERS)
[]	CONCRETE REMOVAL
[]	BITUMINOUS REMOVAL
[- - -]	BARRIER CURB REMOVAL

FILE NAME =	USER NAME = dosddd	DESIGNED - JWM	REVISED -
et:\pw\work\p\dtd\dosddd\0317613\026478\0-sht-rem055.dgn		DRAWN - JPF	REVISED -
PLOT SCALE = 40.0000' / in.		CHECKED - RCH	REVISED -
PLOT DATE = Mon Dec 17 13:30:42 2012		DATE - \$SUBDATE\$	REVISED -

STATE OF ILLINOIS
 DEPARTMENT OF TRANSPORTATION

EXISTING REMOVAL PLAN
 WEST STATE STREET (US BUS 20)

SCALE: SHEET NO. 8 OF 18 SHEETS STA. 280+00 TO STA. 282+23.2

F.A.P. RTE.	SECTION	COUNTY	TOTAL SHEETS	SHEET NO.
303	41R	WINNEBAGO	327	55
FED. ROAD DIST. NO. 2 ILLINOIS FED. AID PROJECT			CONTRACT NO. 64750	