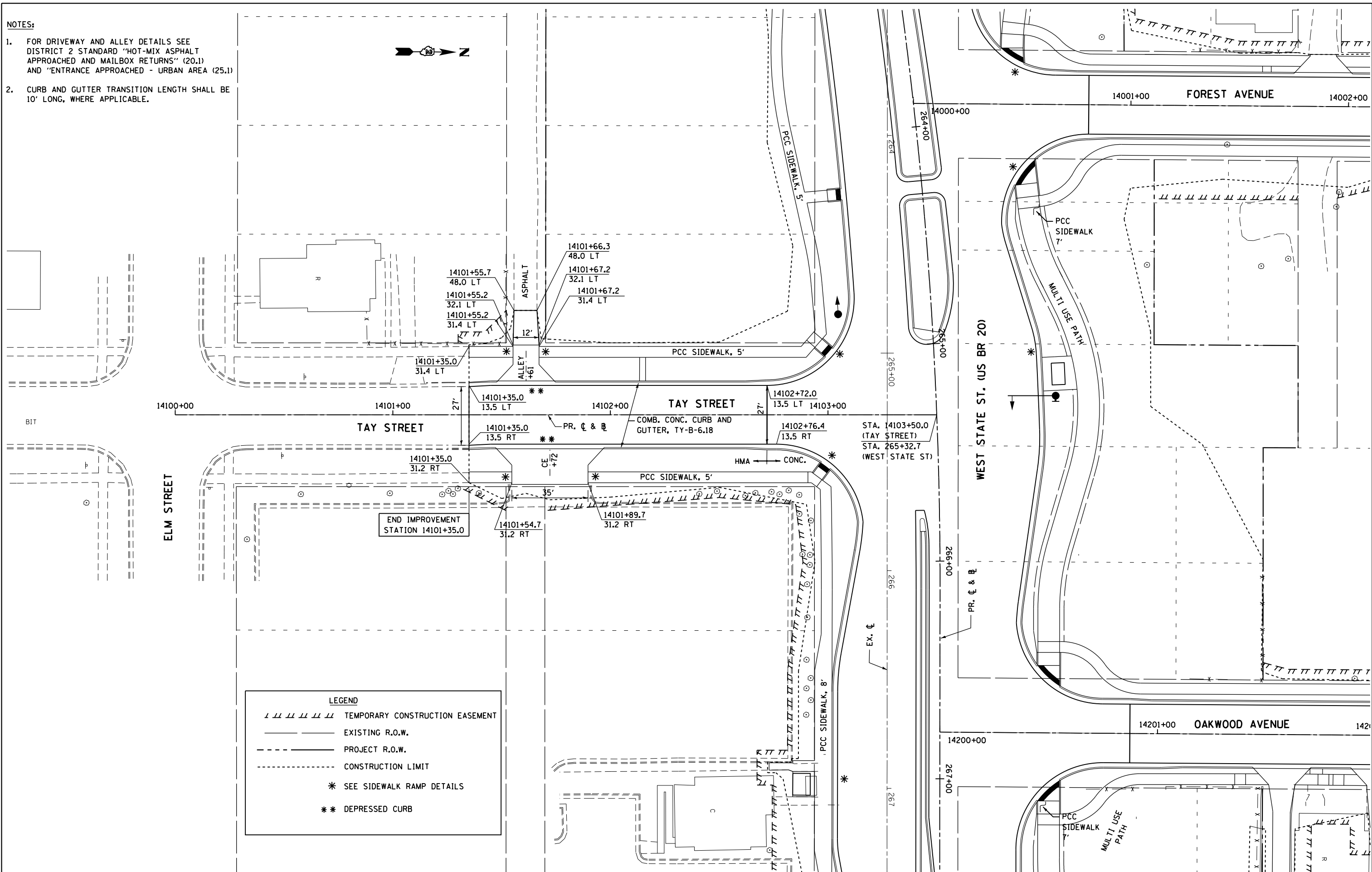


NOTES:

- FOR DRIVEWAY AND ALLEY DETAILS SEE DISTRICT 2 STANDARD "HOT-MIX ASPHALT APPROACHED AND MAILBOX RETURNS" (20.1) AND "ENTRANCE APPROACHED - URBAN AREA (25.1)"
- CURB AND GUTTER TRANSITION LENGTH SHALL BE 10' LONG, WHERE APPLICABLE.



LEGEND	
	TEMPORARY CONSTRUCTION EASEMENT
	EXISTING R.O.W.
	PROJECT R.O.W.
	CONSTRUCTION LIMIT
	SEE SIDEWALK RAMP DETAILS
	DEPRESSED CURB

McDonough Associates Inc.
 Engineers / Architects
 130 East Randolph Street, Chicago, Illinois 60601

FILE NAME =	USER NAME = dosddd	DESIGNED - JWM	REVISED -
et:\pw\work\p\d\dot\dot\dosddd\0317614\0264750-shr-pln080.dgn		DRAWN - JPF	REVISED -
		CHECKED - RCH	REVISED -
		DATE - \$SUBDATE\$	REVISED -

STATE OF ILLINOIS
DEPARTMENT OF TRANSPORTATION

PROPOSED PLAN
TAY STREET

SCALE: SHEET NO. 15 OF 23 SHEETS STA. TO STA.

F.A.P. RTE.	SECTION	COUNTY	TOTAL SHEETS	SHEET NO.
303	41R	WINNEBAGO	327	80
FED. ROAD DIST. NO. 2 (ILLINOIS) FED. AID PROJECT			CONTRACT NO. 64750	