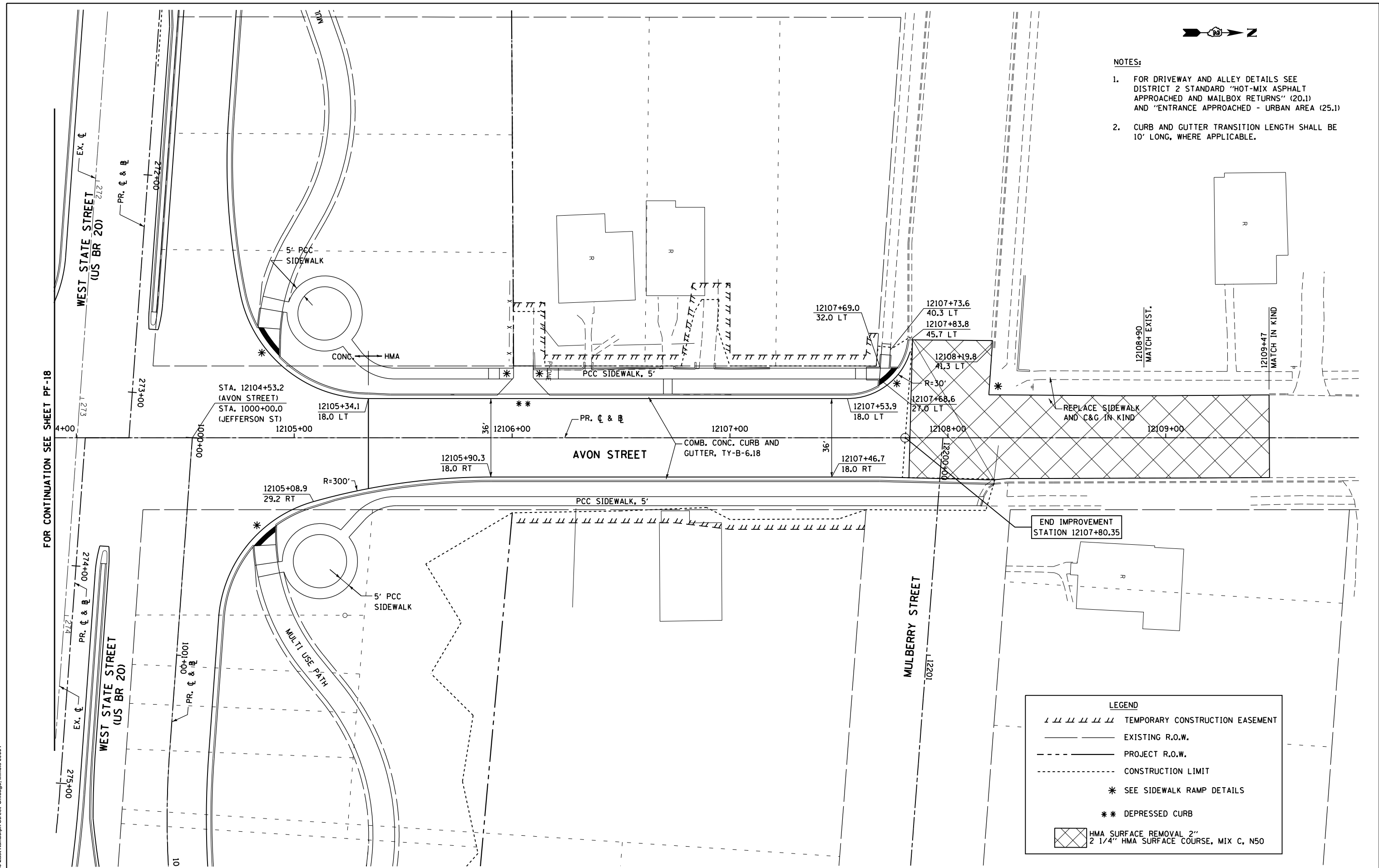




- NOTES:**
- FOR DRIVEWAY AND ALLEY DETAILS SEE DISTRICT 2 STANDARD "HOT-MIX ASPHALT APPROACHED AND MAILBOX RETURNS" (20.1) AND "ENTRANCE APPROACHED - URBAN AREA (25.1)
 - CURB AND GUTTER TRANSITION LENGTH SHALL BE 10' LONG, WHERE APPLICABLE.



END IMPROVEMENT
STATION 12107+80.35

LEGEND

	TEMPORARY CONSTRUCTION EASEMENT
	EXISTING R.O.W.
	PROJECT R.O.W.
	CONSTRUCTION LIMIT
*	SEE SIDEWALK RAMP DETAILS
**	DEPRESSED CURB
	HMA SURFACE REMOVAL 2" 2 1/4" HMA SURFACE COURSE, MIX C, N50

FOR CONTINUATION SEE SHEET PF-18

McDonough Associates Inc.
Engineers / Architects
130 East Randolph Street, Chicago, Illinois 60601

FILE NAME =	USER NAME = dssdd	DESIGNED - JWM	REVISED -
et:\pw\work\p\dssdd\0317614\026478	0-sh-t-pln084.dgn	DRAWN - JPF	REVISED -
	PLOT SCALE = 48.0000' / in.	CHECKED - RCH	REVISED -
	PLOT DATE = Mon Dec 17 13:52:36 2012	DATE - \$SUBDATE\$	REVISED -

**STATE OF ILLINOIS
DEPARTMENT OF TRANSPORTATION**

**PROPOSED PLAN
AVON STREET**

SCALE: SHEET NO. 19 OF 23 SHEETS STA. TO STA.

F.A.P. RTE.	SECTION	COUNTY	TOTAL SHEETS	SHEET NO.
303	41R	WINNEBAGO	327	84
FED. ROAD DIST. NO. 2 ILLINOIS FED. AID PROJECT			CONTRACT NO. 64750	