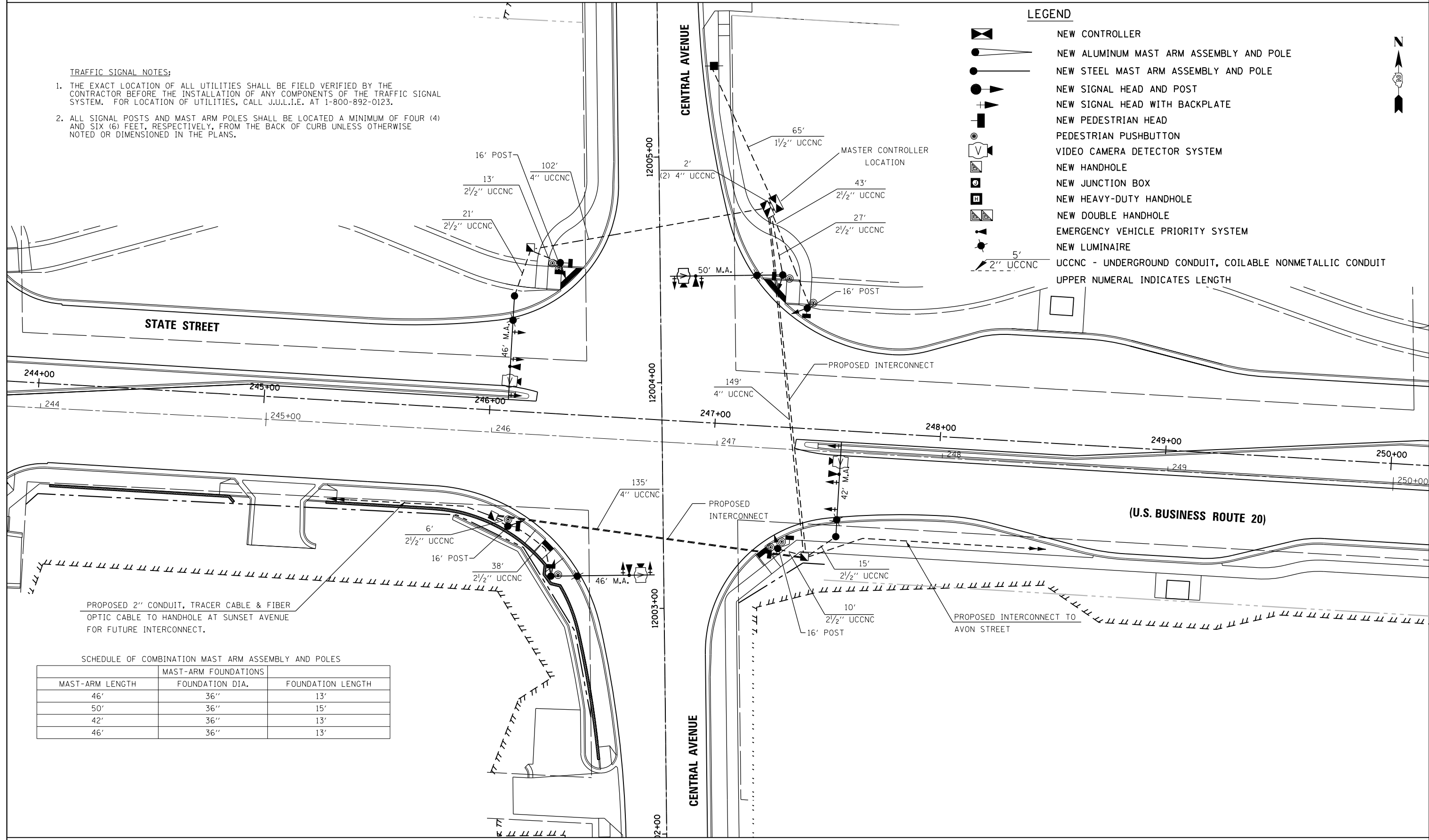


TRAFFIC SIGNAL NOTES:

1. THE EXACT LOCATION OF ALL UTILITIES SHALL BE FIELD VERIFIED BY THE CONTRACTOR BEFORE THE INSTALLATION OF ANY COMPONENTS OF THE TRAFFIC SIGNAL SYSTEM. FOR LOCATION OF UTILITIES, CALL J.U.L.I.E. AT 1-800-892-0123.
2. ALL SIGNAL POSTS AND MAST ARM POLES SHALL BE LOCATED A MINIMUM OF FOUR (4) AND SIX (6) FEET, RESPECTIVELY, FROM THE BACK OF CURB UNLESS OTHERWISE NOTED OR DIMENSIONED IN THE PLANS.

LEGEND

- NEW CONTROLLER
 - NEW ALUMINUM MAST ARM ASSEMBLY AND POLE
 - NEW STEEL MAST ARM ASSEMBLY AND POLE
 - NEW SIGNAL HEAD AND POST
 - NEW SIGNAL HEAD WITH BACKPLATE
 - NEW PEDESTRIAN HEAD
 - PEDESTRIAN PUSHBUTTON
 - VIDEO CAMERA DETECTOR SYSTEM
 - NEW HANDHOLE
 - NEW JUNCTION BOX
 - NEW HEAVY-DUTY HANDHOLE
 - NEW DOUBLE HANDHOLE
 - EMERGENCY VEHICLE PRIORITY SYSTEM
 - NEW LUMINAIRE
 - UCCNC - UNDERGROUND CONDUIT, COILABLE NONMETALLIC CONDUIT
- UPPER NUMERAL INDICATES LENGTH



PROPOSED 2" CONDUIT, TRACER CABLE & FIBER OPTIC CABLE TO HANDHOLE AT SUNSET AVENUE FOR FUTURE INTERCONNECT.

SCHEDULE OF COMBINATION MAST ARM ASSEMBLY AND POLES

MAST-ARM LENGTH	MAST-ARM FOUNDATIONS FOUNDATION DIA.	FOUNDATION LENGTH
46'	36"	13'
50'	36"	15'
42'	36"	13'
46'	36"	13'

FILE NAME =	USER NAME = dossdd	DESIGNED -	REVISED -	STATE OF ILLINOIS DEPARTMENT OF TRANSPORTATION	FAP ROUTE 303 (US BUS. 20) STATE STREET (US BUS. 20) AND CENTRAL AVENUE TRAFFIC SIGNAL INSTALLATION PLAN	F.A.P. RTE.	SECTION	COUNTY	TOTAL SHEETS	SHEET NO.	
et:\pwork\pwork\dot\dossdd\d0317620\0264750-sh1-ts-166-176.dgn	PLOT SCALE = 40.0000' / in.	DRAWN -	REVISED -			303	41R	WINNEBAGO	327	168	
PLOT DATE = Mon Dec 17 15:00:40 2012	DATE - \$SUBDATE\$	CHECKED -	REVISED -			CONTRACT NO. 64750		FED. ROAD DIST. NO. 2 ILLINOIS FED. AID PROJECT			
		DATE - \$SUBDATE\$	REVISED -			SCALE:	SHEET NO.	OF SHEETS	STA.	TO STA.	