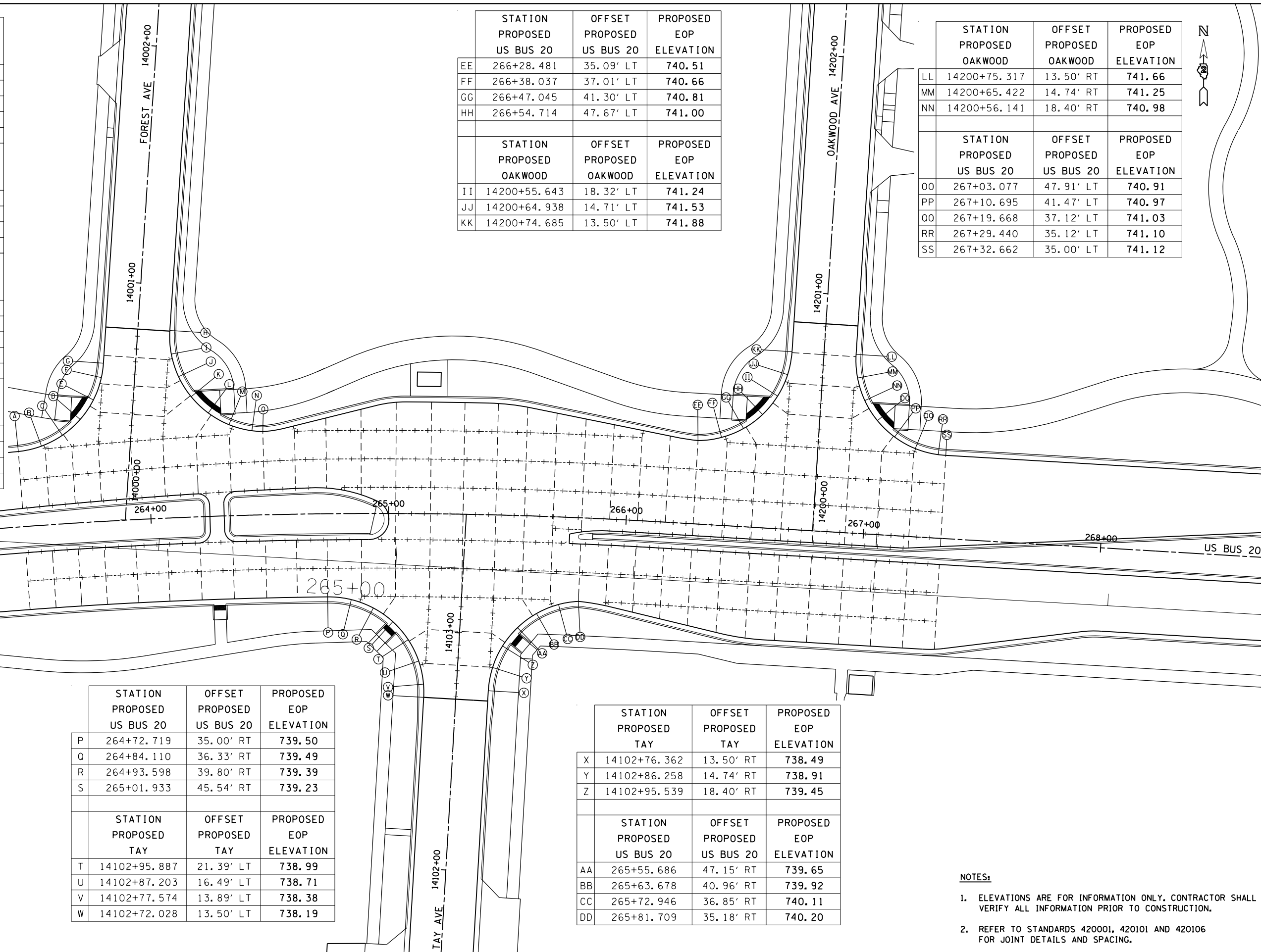


	STATION PROPOSED	OFFSET PROPOSED	PROPOSED EOP ELEVATION
A	263+46.486	31.72' LT	738.34
B	263+56.131	33.27' LT	738.41
C	263+65.119	37.25' LT	738.42
D	263+72.816	43.40' LT	738.40
	STATION PROPOSED	OFFSET PROPOSED	PROPOSED EOP ELEVATION
E	14000+49.667	16.71' LT	738.36
F	14000+59.257	13.97' LT	738.30
G	14000+65.358	13.50' LT	738.44
	STATION PROPOSED	OFFSET PROPOSED	PROPOSED EOP ELEVATION
H	14000+80.925	13.50' RT	738.21
I	14000+71.029	14.74' RT	738.13
J	14000+61.748	18.40' RT	738.12
K	14000+53.659	24.23' RT	738.28
	STATION PROPOSED	OFFSET PROPOSED	PROPOSED EOP ELEVATION
L	264+25.648	43.52' LT	738.61
M	264+34.013	38.36' LT	738.98
N	264.43.399	35.51' LT	739.27
O	264+48.749	35.04' LT	739.34

	STATION PROPOSED	OFFSET PROPOSED	PROPOSED EOP ELEVATION
EE	266+28.481	35.09' LT	740.51
FF	266+38.037	37.01' LT	740.66
GG	266+47.045	41.30' LT	740.81
HH	266+54.714	47.67' LT	741.00
	STATION PROPOSED	OFFSET PROPOSED	PROPOSED EOP ELEVATION
II	14200+55.643	18.32' LT	741.24
JJ	14200+64.938	14.71' LT	741.53
KK	14200+74.685	13.50' LT	741.88

	STATION PROPOSED	OFFSET PROPOSED	PROPOSED EOP ELEVATION
LL	14200+75.317	13.50' RT	741.66
MM	14200+65.422	14.74' RT	741.25
NN	14200+56.141	18.40' RT	740.98
	STATION PROPOSED	OFFSET PROPOSED	PROPOSED EOP ELEVATION
OO	267+03.077	47.91' LT	740.91
PP	267+10.695	41.47' LT	740.97
QQ	267+19.668	37.12' LT	741.03
RR	267+29.440	35.12' LT	741.10
SS	267+32.662	35.00' LT	741.12



	STATION PROPOSED	OFFSET PROPOSED	PROPOSED EOP ELEVATION
P	264+72.719	35.00' RT	739.50
Q	264+84.110	36.33' RT	739.49
R	264+93.598	39.80' RT	739.39
S	265+01.933	45.54' RT	739.23
	STATION PROPOSED	OFFSET PROPOSED	PROPOSED EOP ELEVATION
T	14102+95.887	21.39' LT	738.99
U	14102+87.203	16.49' LT	738.71
V	14102+77.574	13.89' LT	738.38
W	14102+72.028	13.50' LT	738.19

	STATION PROPOSED	OFFSET PROPOSED	PROPOSED EOP ELEVATION
X	14102+76.362	13.50' RT	738.49
Y	14102+86.258	14.74' RT	738.91
Z	14102+95.539	18.40' RT	739.45
	STATION PROPOSED	OFFSET PROPOSED	PROPOSED EOP ELEVATION
AA	265+55.686	47.15' RT	739.65
BB	265+63.678	40.96' RT	739.92
CC	265+72.946	36.85' RT	740.11
DD	265+81.709	35.18' RT	740.20

- NOTES:**
- ELEVATIONS ARE FOR INFORMATION ONLY. CONTRACTOR SHALL VERIFY ALL INFORMATION PRIOR TO CONSTRUCTION.
 - REFER TO STANDARDS 420001, 420101 AND 420106 FOR JOINT DETAILS AND SPACING.