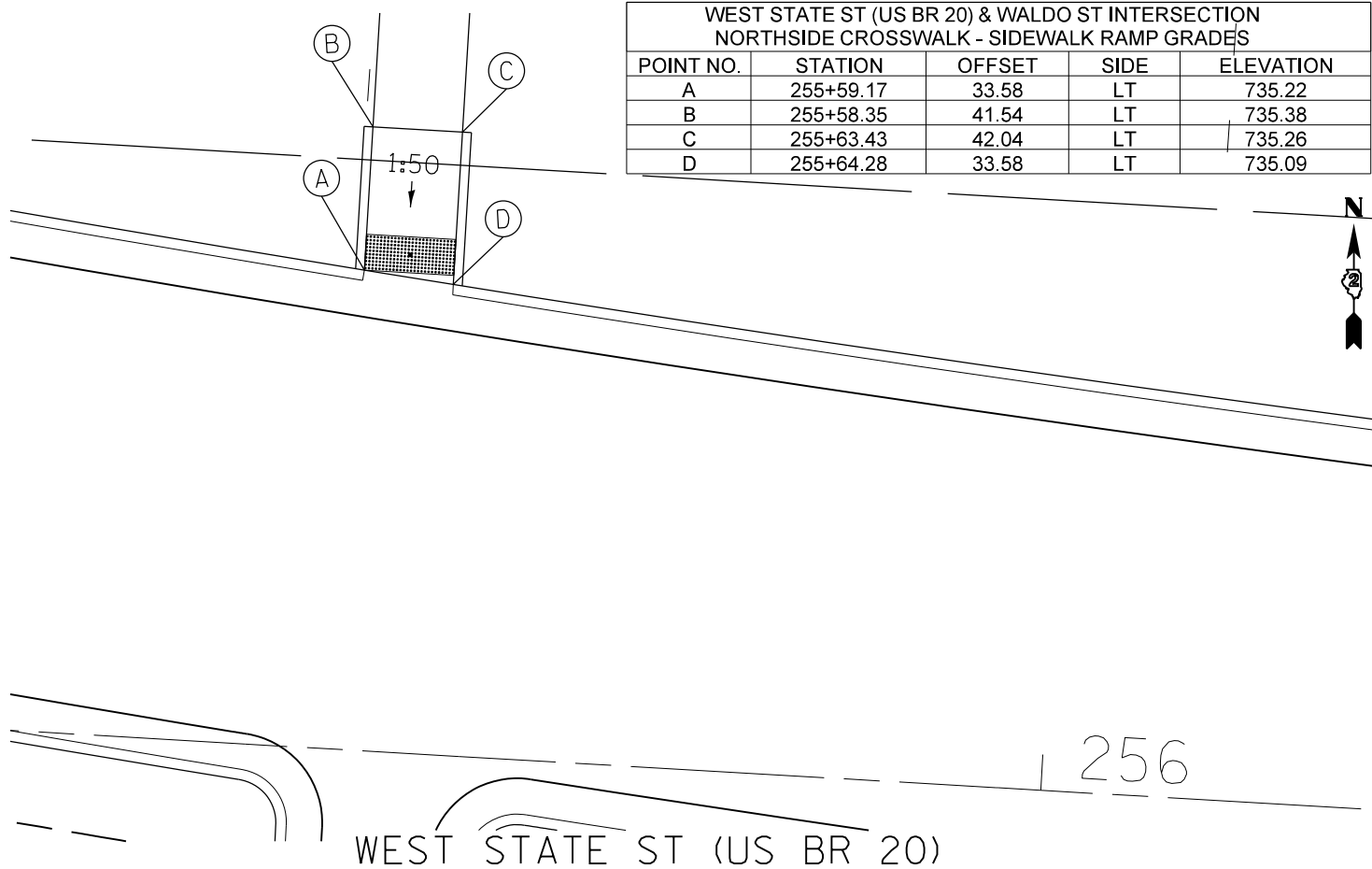


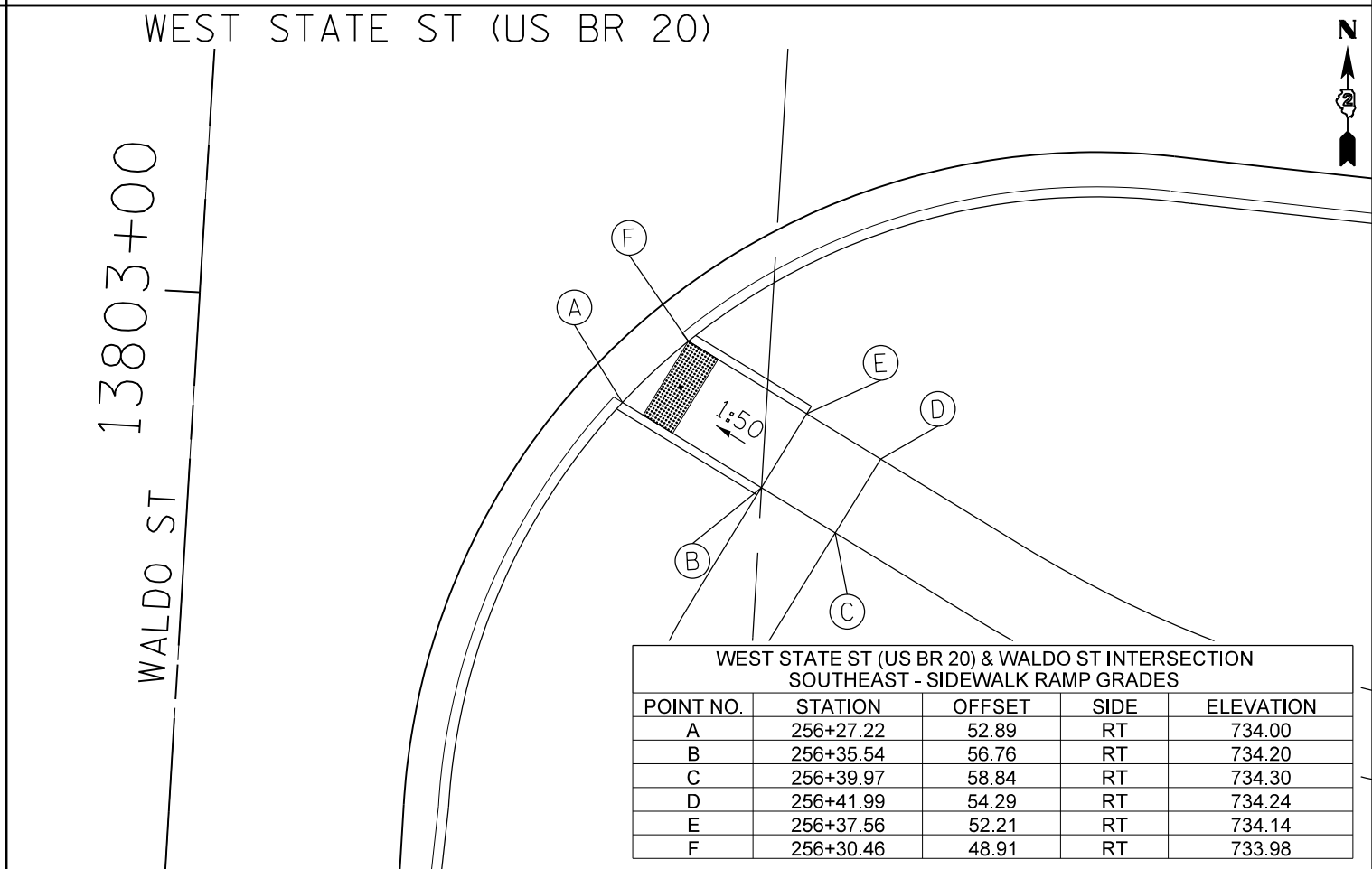
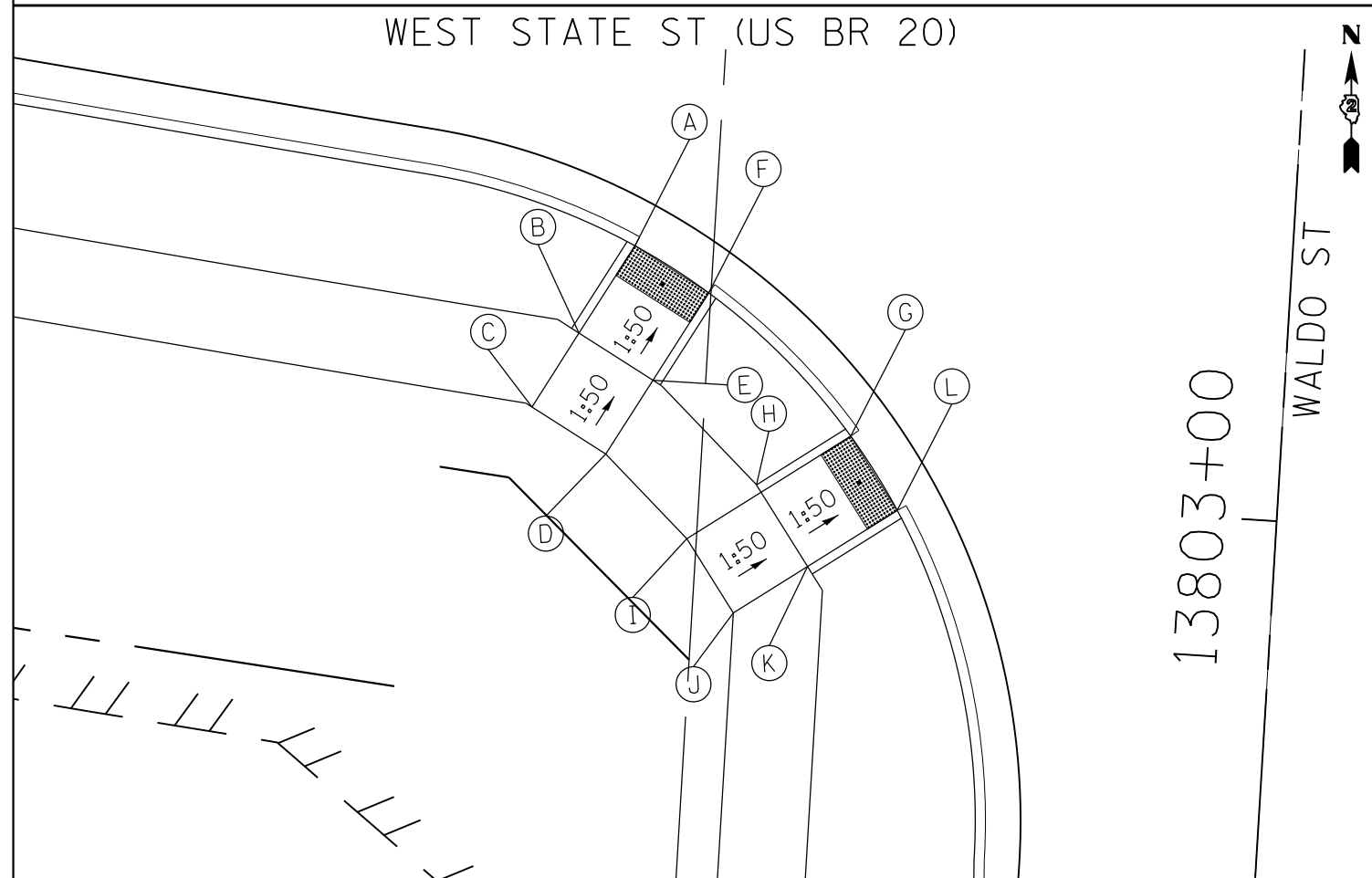
**WEST STATE ST (US BR 20) & WALDO ST INTERSECTION
NORTHSIDE CROSSWALK - SIDEWALK RAMP GRADES**

POINT NO.	STATION	OFFSET	SIDE	ELEVATION
A	255+59.17	33.58	LT	735.22
B	255+58.35	41.54	LT	735.38
C	255+63.43	42.04	LT	735.26
D	255+64.28	33.58	LT	735.09



**WEST STATE ST (US BR 20) & WALDO ST INTERSECTION
SOUTHWEST - SIDEWALK RAMP GRADES**

POINT NO.	STATION	OFFSET	SIDE	ELEVATION
A	255+65.15	39.73	RT	735.03
B	255+62.84	45.16	RT	735.14
C	255+60.90	49.74	RT	735.24
D	255+65.37	51.73	RT	735.14
E	255+67.32	47.15	RT	735.04
F	255+69.64	41.73	RT	734.92
G	255+78.69	48.57	RT	734.56
H	255+74.24	52.51	RT	734.68
I	255+70.56	55.79	RT	734.78
J	255+73.74	59.57	RT	734.69
K	255+77.42	56.30	RT	734.59
L	255+81.87	52.36	RT	734.47



**WEST STATE ST (US BR 20) & WALDO ST INTERSECTION
SOUTHEAST - SIDEWALK RAMP GRADES**

POINT NO.	STATION	OFFSET	SIDE	ELEVATION
A	256+27.22	52.89	RT	734.00
B	256+35.54	56.76	RT	734.20
C	256+39.97	58.84	RT	734.30
D	256+41.99	54.29	RT	734.24
E	256+37.56	52.21	RT	734.14
F	256+30.46	48.91	RT	733.98