
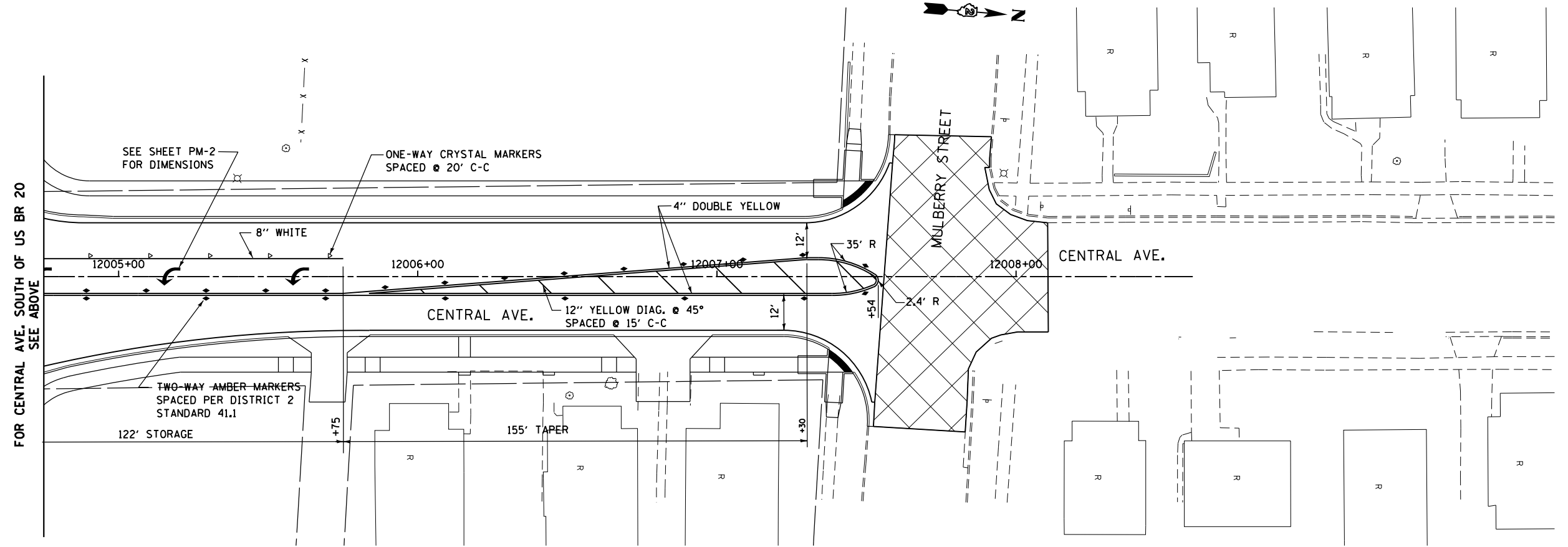


FOR CENTRAL AVE. NORTH OF US BR 20
SEE BELOW

- LEGEND**
- * - 6" WHITE CROSSWALK LINES, 6' WIDE C-C
 - ** - NOSE TO BE RAMPED PER IDOT STANDARD 606301-04
 -  - MULTI-USE PATH
6" WHITE LINES, 10' WIDE C-C WITH
12" WHITE DIAGONALS AT 3' CTS



FOR CENTRAL AVE. SOUTH OF US BR 20
SEE ABOVE

FILE NAME =	USER NAME = dosddd	DESIGNED - JCL	REVISED -
et:\pwork\pwork\dot\dosddd\0317624\0264750-sh1-pm-205.dgn		DRAWN - JCL	REVISED -
	PLOT SCALE = 40.0000' / in.	CHECKED - RCH	REVISED -
	PLOT DATE = Mon Dec 17 15:51:14 2012	DATE - *SUBDATE*	REVISED -

**STATE OF ILLINOIS
DEPARTMENT OF TRANSPORTATION**

**PAVEMENT MARKING PLAN
CENTRAL AVENUE**

SCALE: SHEET NO. 6 OF 9 SHEETS STA. TO STA.

F.A.P. RTE.	SECTION	COUNTY	TOTAL SHEETS	SHEET NO.
303	41R	WINNEBAGO	327	205
FED. ROAD DIST. NO. 2 ILLINOIS FED. AID PROJECT			CONTRACT NO. 64750	