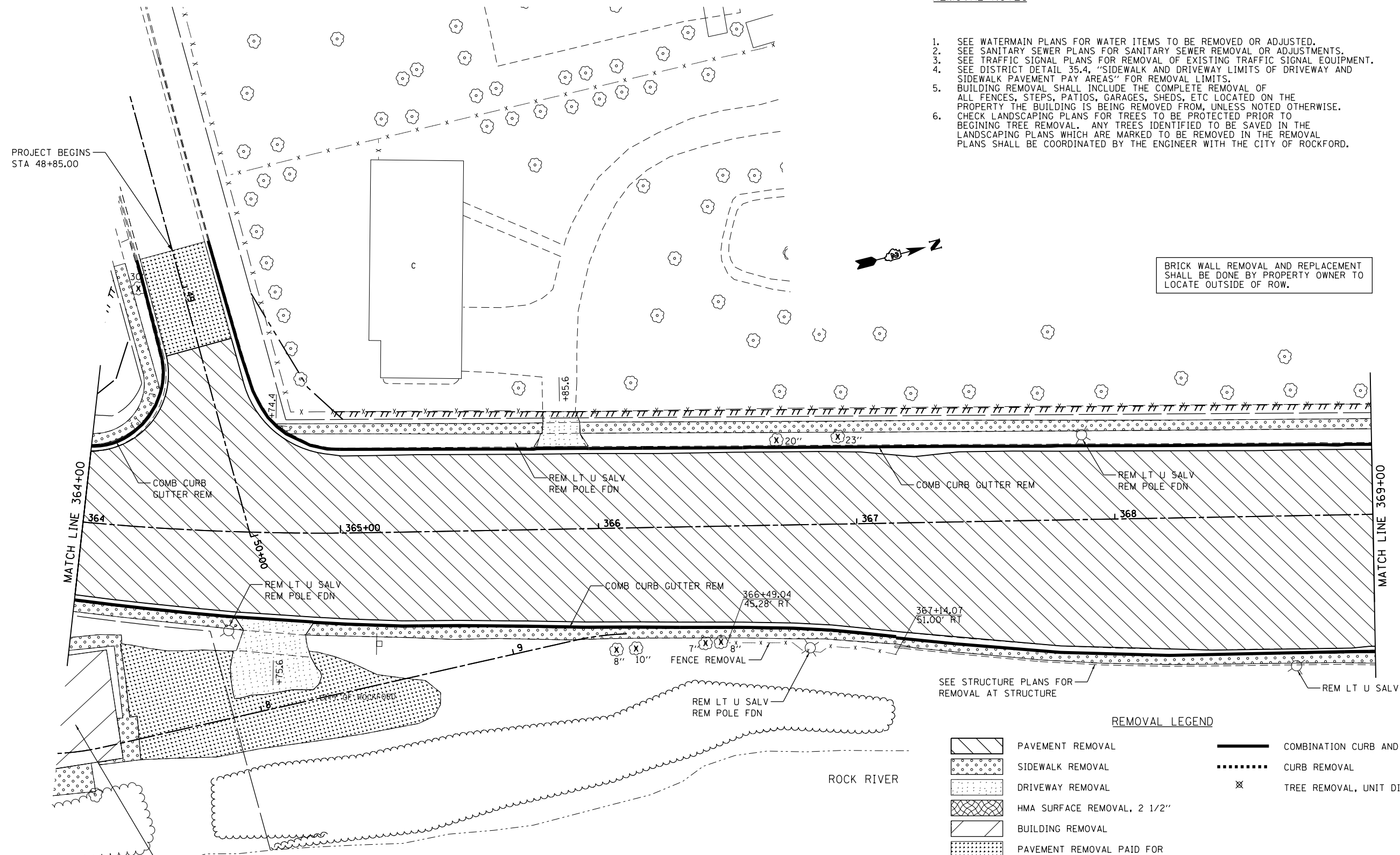


REMOVAL NOTES

1. SEE WATERMAIN PLANS FOR WATER ITEMS TO BE REMOVED OR ADJUSTED.
2. SEE SANITARY SEWER PLANS FOR SANITARY SEWER REMOVAL OR ADJUSTMENTS.
3. SEE TRAFFIC SIGNAL PLANS FOR REMOVAL OF EXISTING TRAFFIC SIGNAL EQUIPMENT.
4. SEE DISTRICT DETAIL 35.4, "SIDEWALK AND DRIVEWAY LIMITS OF DRIVEWAY AND SIDEWALK PAVEMENT PAY AREAS" FOR REMOVAL LIMITS.
5. BUILDING REMOVAL SHALL INCLUDE THE COMPLETE REMOVAL OF ALL FENCES, STEPS, PATIOS, GARAGES, SHEDS, ETC LOCATED ON THE PROPERTY THE BUILDING IS BEING REMOVED FROM, UNLESS NOTED OTHERWISE.
6. CHECK LANDSCAPING PLANS FOR TREES TO BE PROTECTED PRIOR TO BEGINNING TREE REMOVAL. ANY TREES IDENTIFIED TO BE SAVED IN THE LANDSCAPING PLANS WHICH ARE MARKED TO BE REMOVED IN THE REMOVAL PLANS SHALL BE COORDINATED BY THE ENGINEER WITH THE CITY OF ROCKFORD.

BRICK WALL REMOVAL AND REPLACEMENT SHALL BE DONE BY PROPERTY OWNER TO LOCATE OUTSIDE OF ROW.



TO BE REMOVED BY OTHERS

PAVEMENT REMOVAL INFORMATION

LOCATION		EXISTING PAVEMENT	SOURCE
FROM	TO		
IL 2 STA 360+00	STA 371+00	3" ASPHALT ON 9" CONCRETE	EST
COLE AVE		1.5" ASPHALT	CORE

**REMOVAL LEGEND**

	PAVEMENT REMOVAL		COMBINATION CURB AND GUTTER REMOVAL
	SIDEWALK REMOVAL		CURB REMOVAL
	DRIVEWAY REMOVAL		TREE REMOVAL, UNIT DIAMETER
	HMA SURFACE REMOVAL, 2 1/2"		
	BUILDING REMOVAL		
	PAVEMENT REMOVAL PAID FOR AS EARTH EXCAVATION (ASPHALT 6" OR LESS)		
	APPROACH SLAB REMOVAL		
	CONC MEDIAN SURF REMOVAL		
	CORRUGATED MEDIAN REMOVAL		
	MEDIAN REMOVAL		

FILE NAME =	USER NAME = Hogensonjd	DESIGNED -	REVISED -
et:\pw\work\p\dot\hogensonjd\0328875\064821-sht-rem-364.dgn		DRAWN -	REVISED -
PLOT SCALE = 40.0000' / in.		CHECKED -	REVISED -
PLOT DATE = Thu Dec 13 12:01:49 2012		DATE -	REVISED -

STATE OF ILLINOIS  
DEPARTMENT OF TRANSPORTATION

<b>REMOVAL PLANS</b>	
<b>IL 2</b>	
SCALE: 1:20	SHEET NO. 5 OF 23 SHEETS
STA. 364+00 TO STA. 369+00	

F.A.P. RTE.	SECTION	COUNTY	TOTAL SHEETS	SHEET NO.
742	(32, 33) R-1	WINNEBAGO	705	162
CONTRACT NO. 64821				
ILLINOIS FED. AID PROJECT				