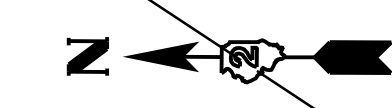


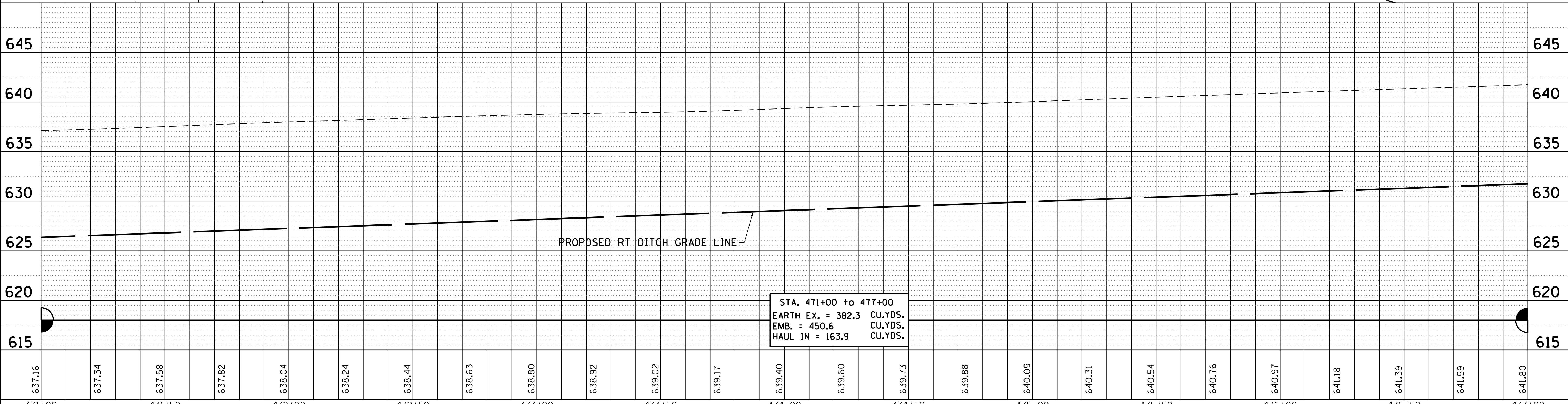
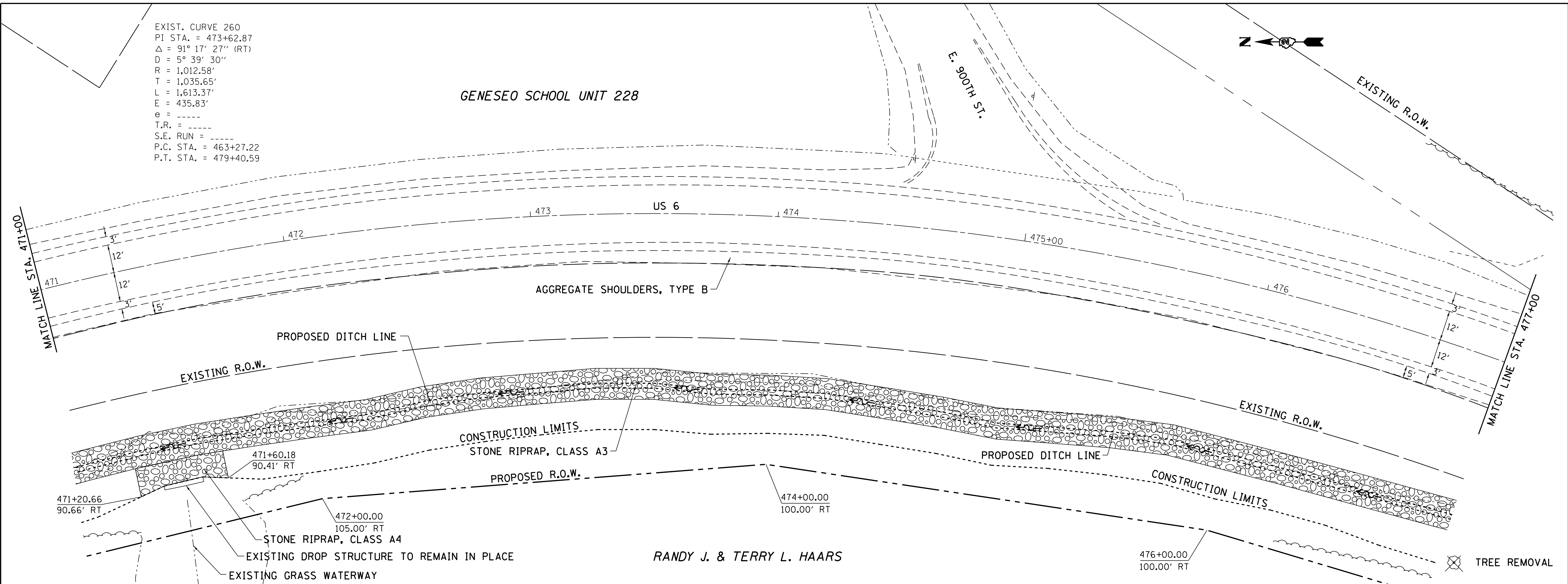
EXIST. CURVE 260
 PI STA. = 473+62.87
 $\Delta = 91^\circ 17' 27''$ (RT)
 $D = 5^\circ 39' 30''$
 $R = 1,012.58'$
 $T = 1,035.65'$
 $L = 1,613.37'$
 $E = 435.83'$
 $\phi = \text{---}$
 $T.R. = \text{---}$
 $S.E. \text{ RUN} = \text{---}$
 $P.C. \text{ STA.} = 463+27.22$
 $P.T. \text{ STA.} = 479+40.59$

GENESEO SCHOOL UNIT 228



PLAN	SURVEYED	BY	DATE
	PLOTTED		
	CHECKED		
	ALIGNED		
	FILED		
NOTE BOOK NO.	FILE NAME		

PROFILE	SURVEYED	BY	DATE
	PLOTTED		
	CHECKED		
	GRADES		
	STRUCTURE		
NOTE BOOK NO.	NOTATIONS		



FILE NAME =	USER NAME = cushmenbw	DESIGNED -	REVISED -
c:\pwork\pwork\pwork\cushmenbw\d0169166\0208009-sht-plnpr.f.dgn		DRAWN -	REVISED -
		CHECKED -	REVISED -
		DATE -	REVISED -

STATE OF ILLINOIS
 DEPARTMENT OF TRANSPORTATION

US 6
 PLAN & PROFILE

F.A.S. RTE.	SECTION	COUNTY	TOTAL SHEETS	SHEET NO.
226	3T & 3BR-1	HENRY	210	39
CONTRACT NO. 64F25			ILLINOIS FED. AID PROJECT	

SCALE: SHEET NO. OF SHEETS STA. TO STA.