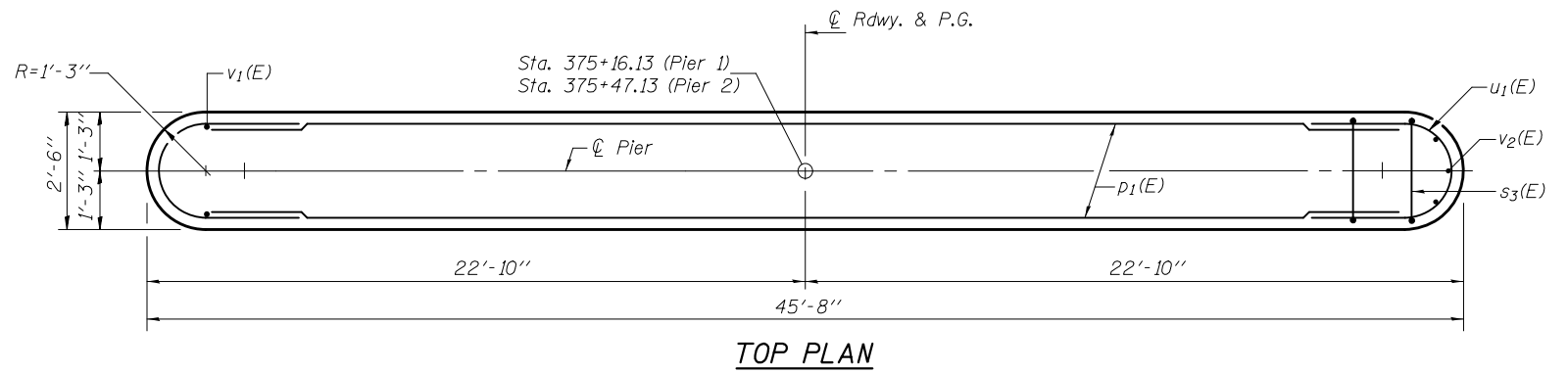
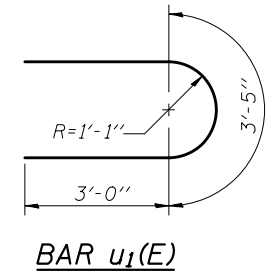


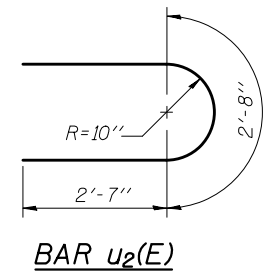
BAR $s_3(E)$



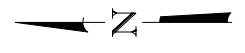
TOP PLAN



BAR $u_1(E)$



BAR $u_2(E)$



PILE DATA - PIER 1

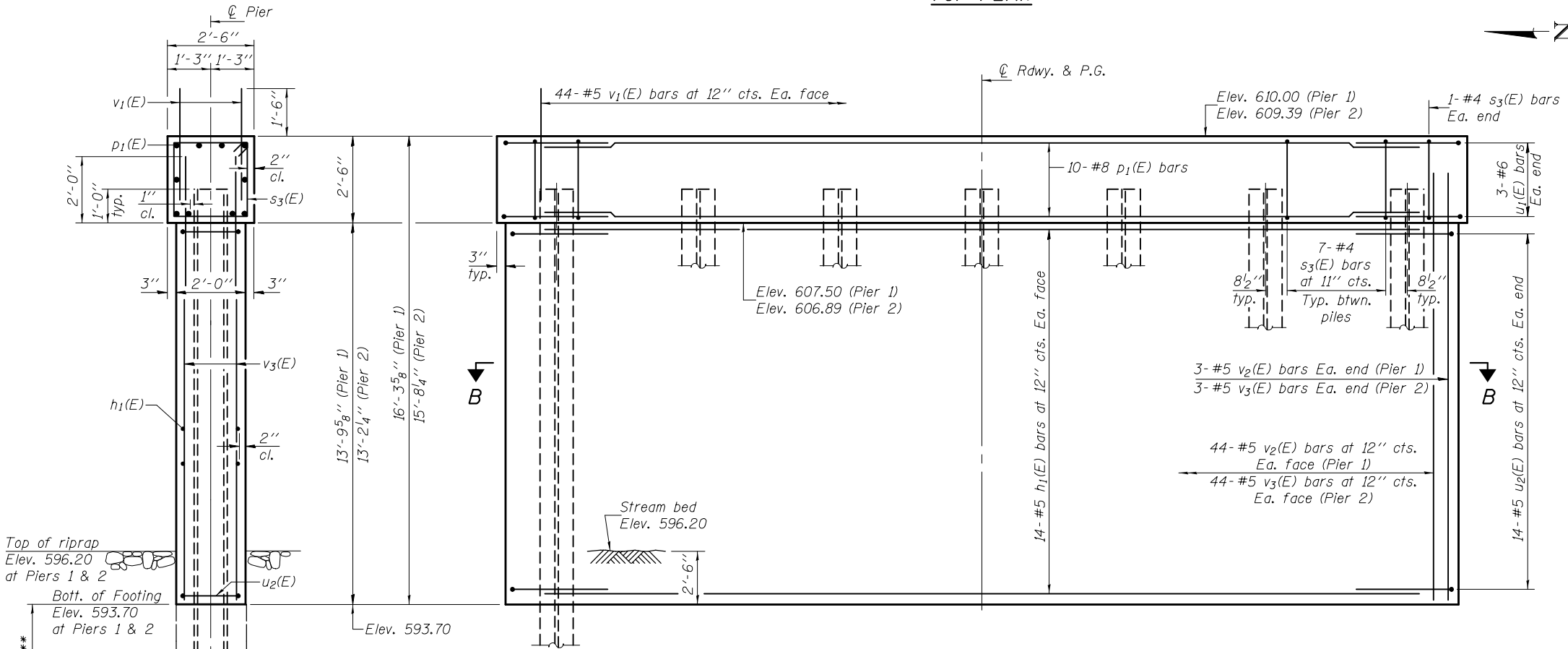
Type: Steel HP12x63
 Nominal Required Bearing: Set in Rock
 Factored Resistance Available: 480 Kips
 Est. Length: 44'
 No. Production Piles: 7
 No. Test Piles: 0
 Est. Top of Rock Elev.: 580.00
 Rock Socket Depth: 15'-0"
 Rock Socket Diameter: 2'-0"

PILE DATA - PIER 2

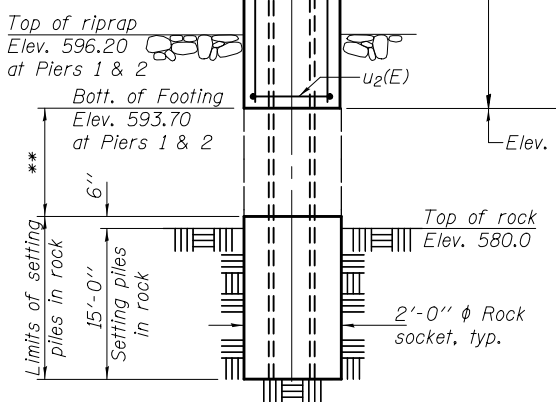
Type: Steel HP12x63
 Nominal Required Bearing: Set in Rock
 Factored Resistance Available: 480 Kips
 Est. Length: 43'
 No. Production Piles: 7
 No. Test Piles: 0
 Est. Top of Rock Elev.: 580.00
 Rock Socket Depth: 15'-0"
 Rock Socket Diameter: 2'-0"

**PIERS 1 & 2
 BILL OF MATERIAL**

Bar	No.	Size	Length	Shape
$h_1(E)$	56	#5	43'-2"	—
$p_1(E)$	20	#8	43'-2"	—
$s_3(E)$	88	#5	9'-5"	□
$u_1(E)$	12	#6	9'-5"	U
$u_2(E)$	56	#5	7'-10"	U
$v(E)$	176	#5	3'-0"	—
$v_2(E)$	94	#5	15'-6"	—
$v_3(E)$	94	#5	14'-11"	—
Cofferdam Excavation		Cu. Yd.	54.0	
Concrete Structures		Cu. Yd.	110.3	
Reinforcement Bars, Epoxy Coated		Pound	9850	
Furnishing Steel Piles HP12x63		Foot	609	
Setting Piles in Rock		Each	14	
Cofferdam (Type 1), Location 1		Each	1	
Cofferdam (Type 1), Location 2		Each	1	

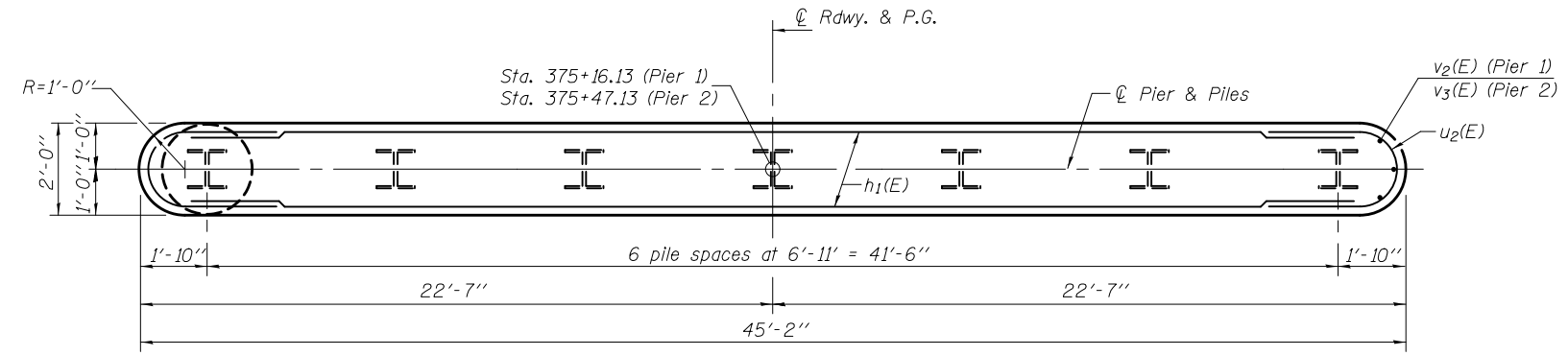


ELEVATION
 (Looking East)



END VIEW

**Backfill remaining holes with Class SI Concrete or Porous granular Embankment. Cost is included with Setting Piles in Rock.



SECTION B-B

DESIGNED - FESSEHA TEKLEHAIMANOT	EXAMINED - <i>Joanne F. [Signature]</i>	DATE - December 4, 2012
CHECKED - STEPHEN M. RYAN	PASSED - <i>Carl [Signature]</i>	REVISIONS
DRAWN - h.t. duong	ACTING ENGINEER OF BRIDGES AND STRUCTURES	
CHECKED - GRA/FT		

STATE OF ILLINOIS
 DEPARTMENT OF TRANSPORTATION

PIERS 1 & 2
 STRUCTURE NO. 037-0178

SHEET NO. 13 OF 15 SHEETS

F.A.S. RTE.	SECTION	COUNTY	TOTAL SHEETS	SHEET NO.
226	3T & 3BR-1	HENRY	210	54
CONTRACT NO. 64F25				

ILLINOIS FED. AID PROJECT