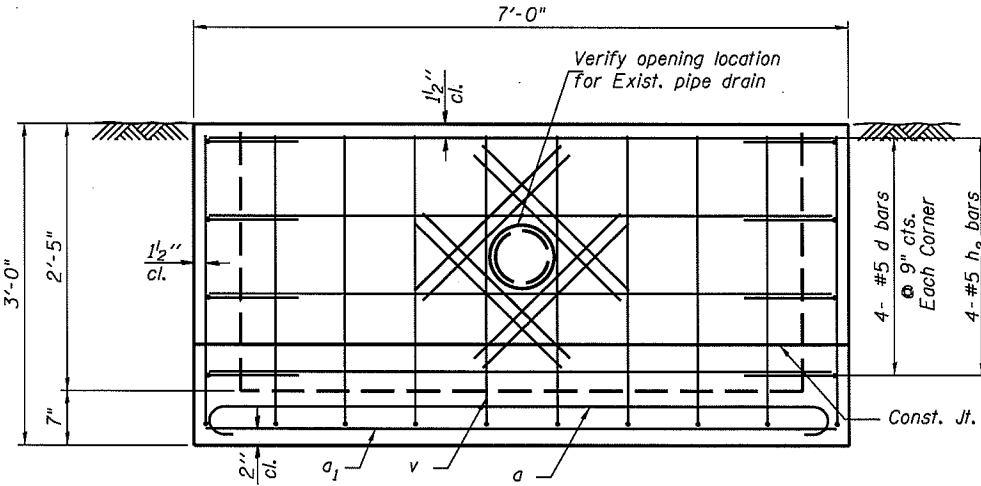
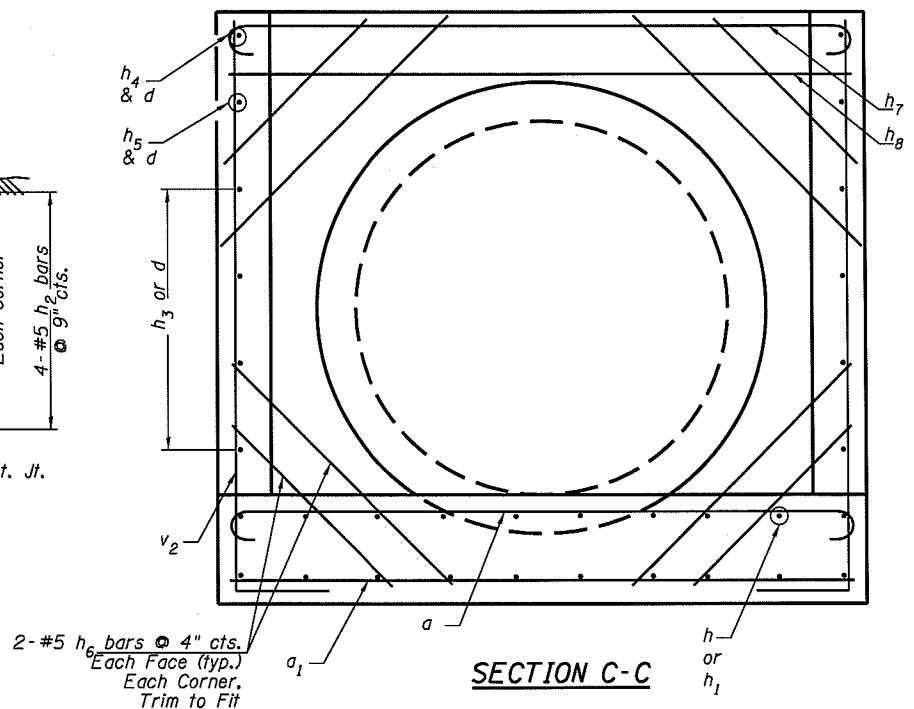


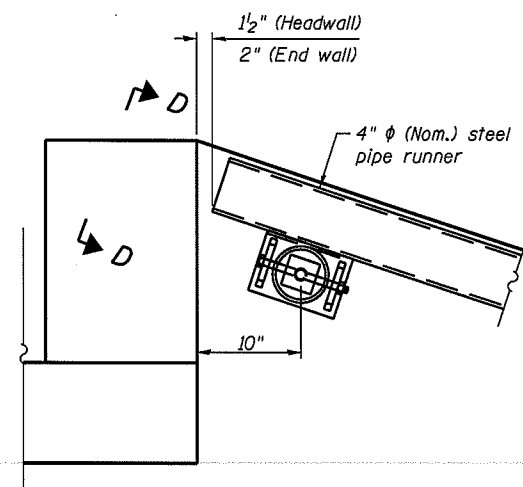
SECTION A-A



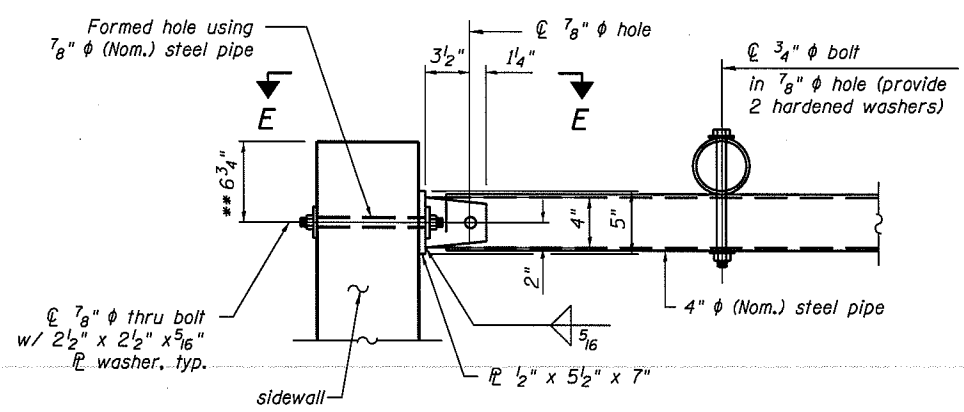
VIEW B-B



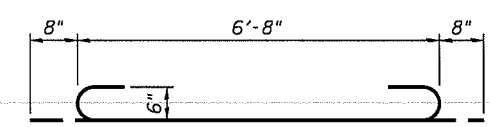
SECTION C-C



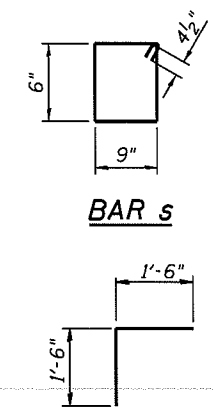
DETAIL A



SECTION D-D

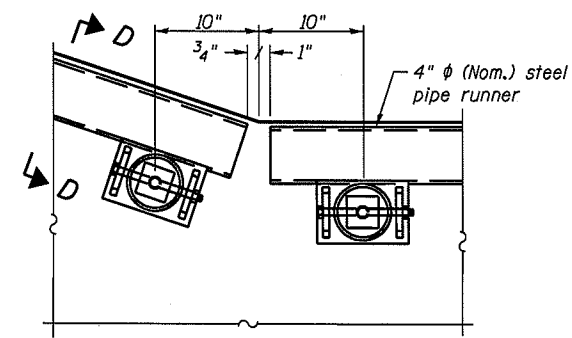


BAR a and h7



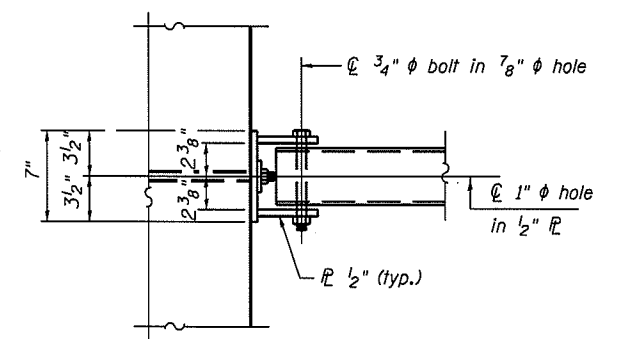
BAR s

BAR d

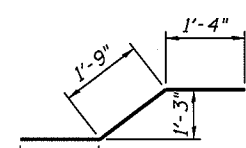


DETAIL B

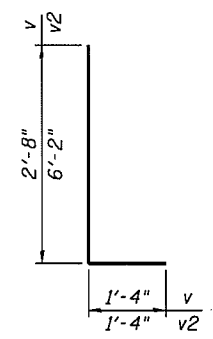
** Measured perpendicular to top of sidewall. In addition, formed hole shall be located a minimum of 6" measured horizontally from any vertical joints necessary for construction of the culvert extension with drop box.



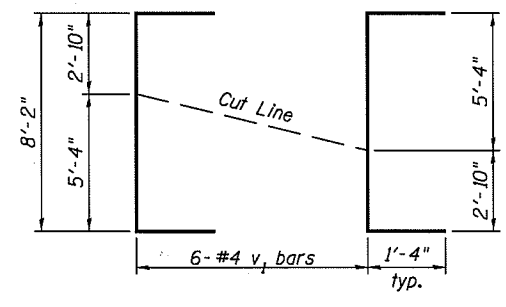
VIEW E-E



BAR h1



BAR v and v2



BAR v1 CUTTING DIAGRAM

BILL OF MATERIAL
(For Information Only)

Bar	No.	Size	Length	Shape
a	34	#5	8'-0"	U
a1	23	#5	6'-8"	U
d	20	#5	3'-0"	J
h	16	#4	16'-7"	U
h1	8	#5	4'-5"	U
h2	4	#5	6'-8"	U
h3	8	#5	17'-7"	U
h4	2	#5	13'-0"	U
h5	2	#5	5'-11"	U
h6	24	#5	4'-6"	U
h7	2	#6	8'-0"	U
h8	2	#6	6'-8"	U
s	7	#4	3'-3"	U
v	24	#5	4'-0"	J
v1	13	#5	10'-10"	J
v2	4	#5	7'-6"	J

DESCRIPTION	UNIT	QTY.
* Concrete Structures	Cu. Yd.	6.1
* Reinforcement Bars	Pound	1,380
** 4" Galv. Steel Pipe	4 @	5'-8"
	2 @	10'-5"
** 3/4" Galv. Steel Bolts	Each	8
** Side Assembly	Each	8

*Included in Drop Box, No. 2

**Included in Traversable Pipe Grates with all hardware and steel for Assemblies

H:\gornes\desa\CAD\193220\14\CAD_Sheets\64F25_Details_No_2.dgn



USER NAME = STLCO.design\consultant	DESIGNED - KJB	REVISED -
PLLOT SCALE = NTS	CHECKED - DFM	REVISED -
PLLOT DATE = 10/11/2012	DRAWN - KJB	REVISED -
	CHECKED - DFM	REVISED -

STATE OF ILLINOIS
DEPARTMENT OF TRANSPORTATION

DETAILS
DROP BOX NO. 2
SHEET NO. S-2 OF S-2 SHEETS

F.A.S. RTE.	SECTION	COUNTY	TOTAL SHEETS	SHEET NO.
226	(3T & 3) BR-1	HENRY	210	07
			CONTRACT NO. 64F25	
ILLINOIS FED. AID PROJECT				